



AZ-300^{Q&As}

Microsoft Azure Architect Technologies

Pass Microsoft AZ-300 Exam with 100% Guarantee

Free Download Real Questions & Answers **PDF** and **VCE** file from:

<https://www.pass4lead.com/az-300.html>

100% Passing Guarantee
100% Money Back Assurance

Following Questions and Answers are all new published by Microsoft
Official Exam Center

-  **Instant Download** After Purchase
-  **100% Money Back** Guarantee
-  **365 Days** Free Update
-  **800,000+** Satisfied Customers

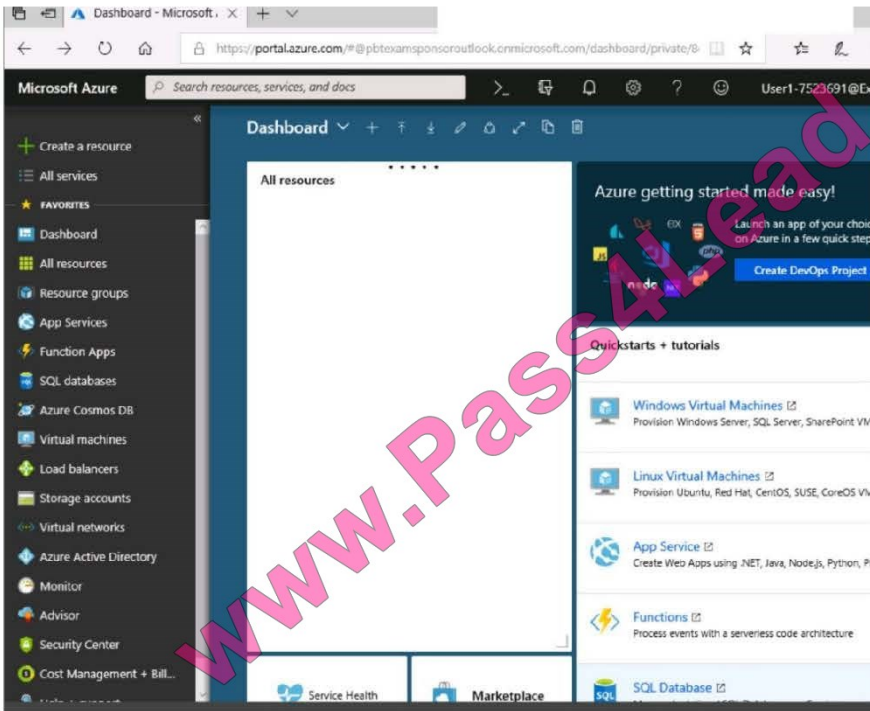
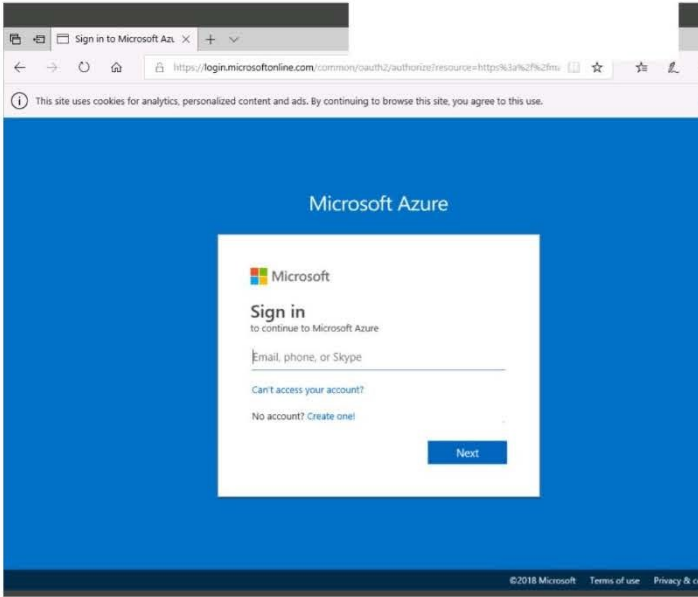




QUESTION 1

SIMULATION

Click to expand each objective. To connect to the Azure portal, type <https://portal.azure.com> in the browser address bar.





Home > Storage accounts > Create storage account

Create storage account

Validation passed

Basics Advanced Tags Review + create

BASICS

Subscription	Microsoft AZ-100 5
Resource group	corpdata7523690
Location	East US
Storage account name	corpdata7523690n1
Deployment model	Resource manager
Account kind	StorageV2 (general purpose v2)
Replication	Read-access geo-redundant storage (RA-GRS)
Performance	Standard
Access tier (default)	Hot

ADVANCED

Secure transfer required	Enabled
Hierarchical namespace	Disabled

Create Previous Next Download a template for automation

Home > Storage accounts > Create storage account

Create storage account

Basics Advanced Tags Review + create

BASICS

Subscription	Microsoft AZ-100 5
Resource group	corpdata7523690
Location	East US
Storage account name	corpdata7523690n1
Deployment model	Resource manager
Account kind	StorageV2 (general purpose v2)
Replication	Read-access geo-redundant storage (RA-GRS)
Performance	Standard
Access tier (default)	Hot

ADVANCED

Secure transfer required	Enabled
Hierarchical namespace	Disabled

*** Submitting deployment...
Submitting the deployment template for resource 'corpdata7523690'.

Home > Microsoft.StorageAccount-20181011170335 - Overview

Microsoft.StorageAccount-20181011170335 - Overview

Deployment

Delete Cancel Redeploy Refresh

Search (Ctrl+/)

Overview

- Outputs
- Inputs
- Template

*** Your deployment is underway

Check the status of your deployment, manage resources, or troubleshoot deployment issues. Pin this page to your dashboard to easily find it next time.

Deployment
name: Microsoft.StorageAccount-20181011170335
Subscription: Microsoft AZ-100 5
Resource group: corpdata7523690

DEPLOYMENT DETAILS (Download)
Start time: 10/11/2018 5:04:06 PM
Duration: 17 seconds
Correlation ID: bd0806a4-d1bd-42db-be6b-55e0ec38f49b

RESOURCE	TYPE	STATUS	OPERATL...
No results.			



[Home](#) > [Virtual machines](#) > Create a virtual machine

Create a virtual machine

! Validation failed. Required information is missing or not valid.

[Basics](#) • [Disks](#) [Networking](#) [Management](#) [Guest config](#) [Tags](#) [Review + create](#)

PRODUCT DETAILS

Ubuntu Server 18.04 LTS

by Canonical

[Terms of use](#) | [Privacy policy](#)

Standard D2s v3

by Microsoft

[Terms of use](#) | [Privacy policy](#)

Pricing not available for this offering

View [Pricing details](#) for more information.

Subscription credits apply ⓘ

0.0960 USD/hr

[Pricing for other VM sizes](#)

TERMS

By clicking "Create", I (a) agree to the legal terms and privacy statement(s) associated with the Marketplace offering(s) listed above; (b) authorize Microsoft to bill my current payment method for the fees associated with the offering(s), with the same billing frequency as my Azure subscription; and (c) agree that Microsoft may share my contact, usage and transactional information with the provider(s) of the offering(s) for support, billing and other transactional activities. Microsoft does not provide rights for third-party offerings. See the [Azure Marketplace Terms](#) for additional details.

When you are finished performing all the tasks, click the `Next` button.

Note that you cannot return to the lab once you click the `Next` button. Scoring occurs in the background while you complete the rest of the exam.

Overview

The following section of the exam is a lab. In this section, you will perform a set of tasks in a live environment. While most functionality will be available to you as it would be in a live environment, some functionality (e.g., copy and paste, ability to navigate to external websites) will not be possible by design.

Scoring is based on the outcome of performing the tasks stated in the lab. In other words, it doesn't matter how you accomplish the task, if you successfully perform it, you will earn credit for that task.

Labs are not timed separately, and this exam may have more than one lab that you must complete. You can use as much time as you would like to complete each lab. But, you should manage your time appropriately to ensure that you are

able to complete the lab(s) and all other sections of the exam in the time provided.

Please note that once you submit your work by clicking the Next button within a lab, you will NOT be able to return to the lab.



To start the lab

You may start the lab by clicking the Next button.

You plan to deploy several Azure virtual machines and to connect them to a virtual network named VNET1007.

You need to ensure that future virtual machines on VNET1007 can register their name in an internal DNS zone named corp8548984.com. The zone must NOT be hosted on a virtual machine.

What should you do from Azure Cloud Shell?

To complete this task, start Azure Cloud Shell and select PowerShell (Linux), Click Show Advanced settings, and then enter corp8548984n1 in the Storage account text box and File1 share text box. Click Create storage, and then complete

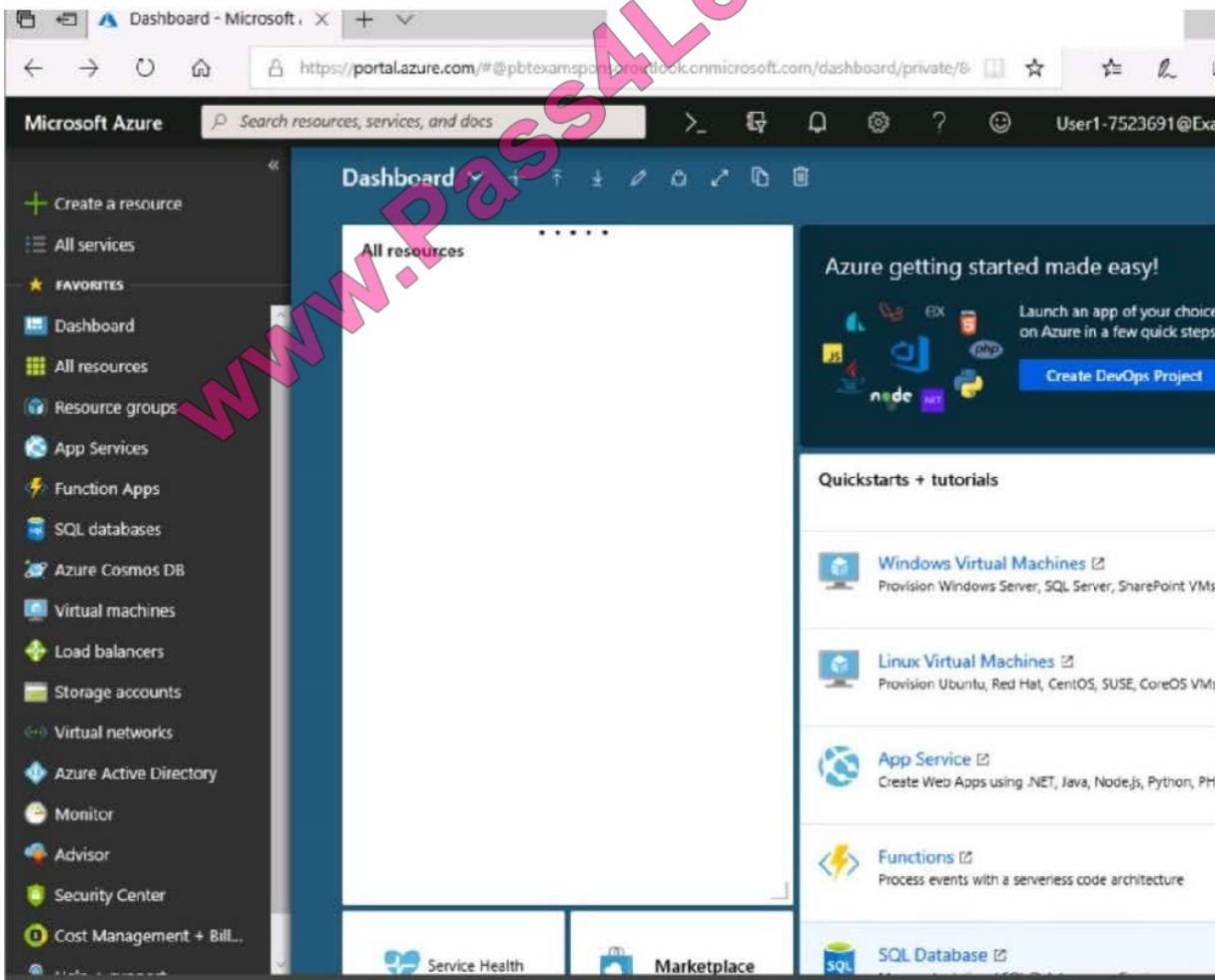
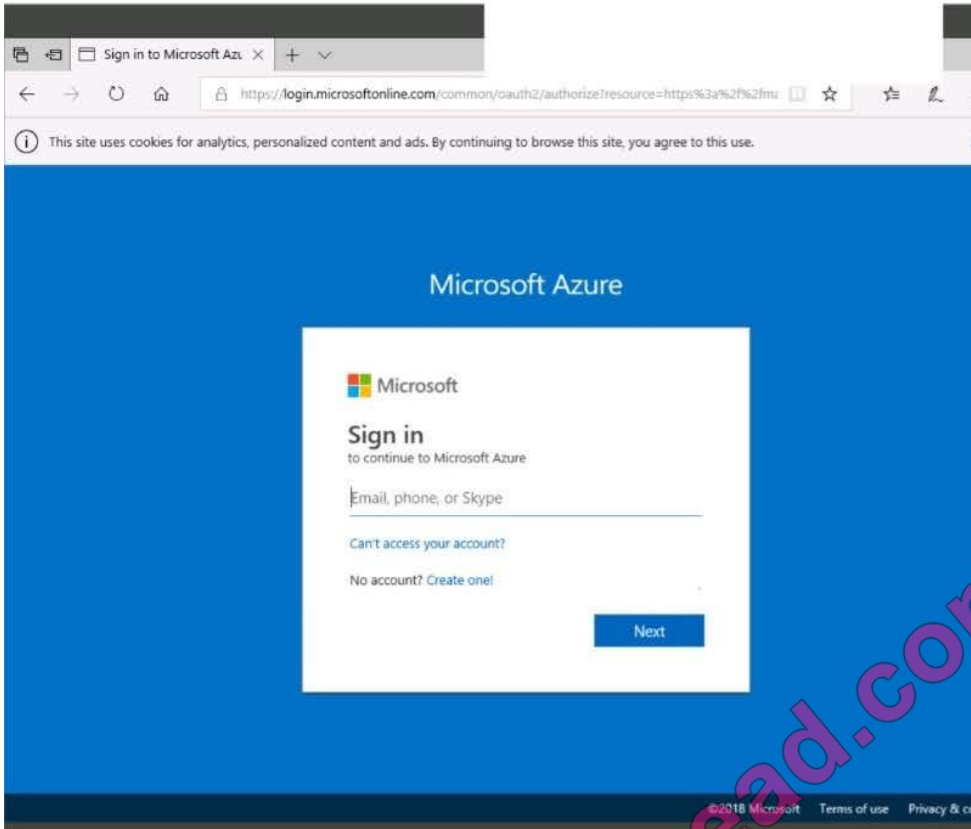
the task.

Correct Answer:

QUESTION 2

SIMULATION

Click to expand each objective. To connect to the Azure portal, type <https://portal.azure.com> in the browser address bar.





Home > Storage accounts > Create storage account

Create storage account

✓ Validation passed

Basics **Advanced** Tags Review + create

BASICS

Subscription	Microsoft AZ-100 5
Resource group	corpdata7523690
Location	East US
Storage account name	corpdata7523690n1
Deployment model	Resource manager
Account kind	StorageV2 (general purpose v2)
Replication	Read-access geo-redundant storage (RA-GRS)
Performance	Standard
Access tier (default)	Hot

ADVANCED

Secure transfer required	Enabled
Hierarchical namespace	Disabled

Create Previous Next Download a template for automation

Home > Storage accounts > Create storage account

Create storage account

Basics **Advanced** Tags Review + create

BASICS

Subscription	Microsoft AZ-100 5
Resource group	corpdata7523690
Location	East US
Storage account name	corpdata7523690n1
Deployment model	Resource manager
Account kind	StorageV2 (general purpose v2)
Replication	Read-access geo-redundant storage (RA-GRS)
Performance	Standard
Access tier (default)	Hot

ADVANCED

Secure transfer required	Enabled
Hierarchical namespace	Disabled

*** Submitting deployment...
Submitting the deployment template for resource 'corpdata7523690'.

Home > Microsoft.StorageAccount-20181011170335 - Overview

Microsoft.StorageAccount-20181011170335 - Overview

Deployment

Delete Cancel Redeploy Refresh

Search (Ctrl+/)

Overview

- Outputs
- Inputs
- Template

*** Your deployment is underway

Check the status of your deployment, manage resources, or troubleshoot deployment issues. Pin this page to your dashboard to easily find it next time.

Deployment
name: Microsoft.StorageAccount-20181011170335
Subscription: Microsoft AZ-100 5
Resource group: corpdata7523690


DEPLOYMENT DETAILS (Download)
Start time: 10/11/2018 5:04:06 PM
Duration: 17 seconds
Correlation ID: bd0806a4-d1bd-42db-be6b-55e0ec38f49b

RESOURCE	TYPE	STATUS	OPERATL...
No results.			



[Home](#) > [Virtual machines](#) > Create a virtual machine

Create a virtual machine

 Validation failed. Required information is missing or not valid.

[Basics](#) • [Disks](#) [Networking](#) [Management](#) [Guest config](#) [Tags](#) [Review + create](#)

PRODUCT DETAILS

Ubuntu Server 18.04 LTS

by Canonical

[Terms of use](#) | [Privacy policy](#)

Standard D2s v3

by Microsoft

[Terms of use](#) | [Privacy policy](#)

Pricing not available for this offering

View [Pricing details](#) for more information.

Subscription credits apply 

0.0960 USD/hr

[Pricing for other VM sizes](#)

TERMS

By clicking "Create", I (a) agree to the legal terms and privacy statement(s) associated with the Marketplace offering(s) listed above; (b) authorize Microsoft to bill my current payment method for the fees associated with the offering(s), with the same billing frequency as my Azure subscription; and (c) agree that Microsoft may share my contact, usage and transactional information with the provider(s) of the offering(s) for support, billing and other transactional activities. Microsoft does not provide rights for third-party offerings. See the [Azure Marketplace Terms](#) for additional details.

When you are finished performing all the tasks, click the `Next` button.

Note that you cannot return to the lab once you click the `Next` button. Scoring occurs in the background while you complete the rest of the exam.

Overview

The following section of the exam is a lab. In this section, you will perform a set of tasks in a live environment. While most functionality will be available to you as it would be in a live environment, some functionality (e.g., copy and paste, ability to navigate to external websites) will not be possible by design.

Scoring is based on the outcome of performing the tasks stated in the lab. In other words, it doesn't matter how you accomplish the task, if you successfully perform it, you will earn credit for that task.

Labs are not timed separately, and this exam may have more than one lab that you must complete. You can use as much time as you would like to complete each lab. But, you should manage your time appropriately to ensure that you are

able to complete the lab(s) and all other sections of the exam in the time provided.

Please note that once you submit your work by clicking the Next button within a lab, you will NOT be able to return to the lab.



To start the lab

You may start the lab by clicking the Next button.

You plan to move backup files and documents from an on-premises Windows file server to Azure Storage. The backup files will be stored as blobs.

You need to create a storage account named corpdata8548984n2. The solution must meet the following requirements:

- Ensure that the documents are accessible via drive mappings from Azure virtual machines that run Windows Server 2016

- Provide the highest possible redundancy for the documents

- Minimize storage access costs What should you do from the Azure portal?

Correct Answer: See solution below.

Step 1: In the Azure portal, click All services. In the list of resources, type Storage Accounts. As you begin typing, the list filters based on your input. Select Storage Accounts.

Step 2: On the Storage Accounts window that appears, choose Add.

Step 3: Select the subscription in which to create the storage account.

Step 4: Under the Resource group field, select Create New. Create a new Resource



Home > Create storage account

Create storage account

Basics **Advanced** Tags Review + create

Azure Storage is a Microsoft-managed service providing cloud storage that is highly available, secure, durable, scalable, and redundant. Azure Storage includes Azure Blobs (objects), Azure Data Lake Storage Gen2, Azure Files, Azure Queues, and Azure Tables. The cost of your storage account depends on the usage and the options you choose below. [Learn more](#)

PROJECT DETAILS

Select the subscription to manage deployed resources and costs. Use resource groups like folders to organize and manage all your resources.

* Subscription: <your-subscription>

* Resource group: sample-resource-group
[Create new](#)

INSTANCE DETAILS

The default deployment model is Resource Manager. You can also use the classic deployment model instead. [Choose classic](#)

* Storage account name: [input field]

* Location: [input field]

Performance: [input field]

Account kind: StorageV2 (general purpose v2)

Replication: Locally-redundant storage (LRS)

Access tier (default): Cool Hot

[Review + create](#) [Previous](#) [Next : Advanced >](#)

A resource group is a container that holds related resources for an Azure solution.

* Name: your-resource-group

[OK](#) [Cancel](#)

Step 5: Enter a name for your storage account: corpdata8548984n2

Step 6: For Account kind select: General-purpose v2 accounts (recommended for most scenarios)

General-purpose v2 accounts is recommended for most scenarios. General-purpose v2 accounts deliver the lowest per-gigabyte capacity prices for Azure Storage, as well as industry-competitive transaction prices.

Step 7: For replication select: Read-access geo-redundant storage (RA-GRS)

Read-access geo-redundant storage (RA-GRS) maximizes availability for your storage account. RA-GRS provides read-



only access to the data in the secondary location, in addition to geo-replication across two regions.

References:

<https://docs.microsoft.com/en-us/azure/storage/common/storage-quickstart-create-account>

<https://docs.microsoft.com/en-us/azure/storage/common/storage-account-overview>

QUESTION 3

Which pricing tier should you recommend for WebApp?

- A. D1
- B. P1v2
- C. S1
- D. B1

Correct Answer:

Standard supports up to 10 instances, and would be enough as the Standard plan includes auto scale that can automatically adjust the number of virtual machine instances running to match your traffic needs.

Scenario: Ensure that WebApp1 can adjust the number of instances automatically based on the load and can scale up to five instances

Incorrect Answers:

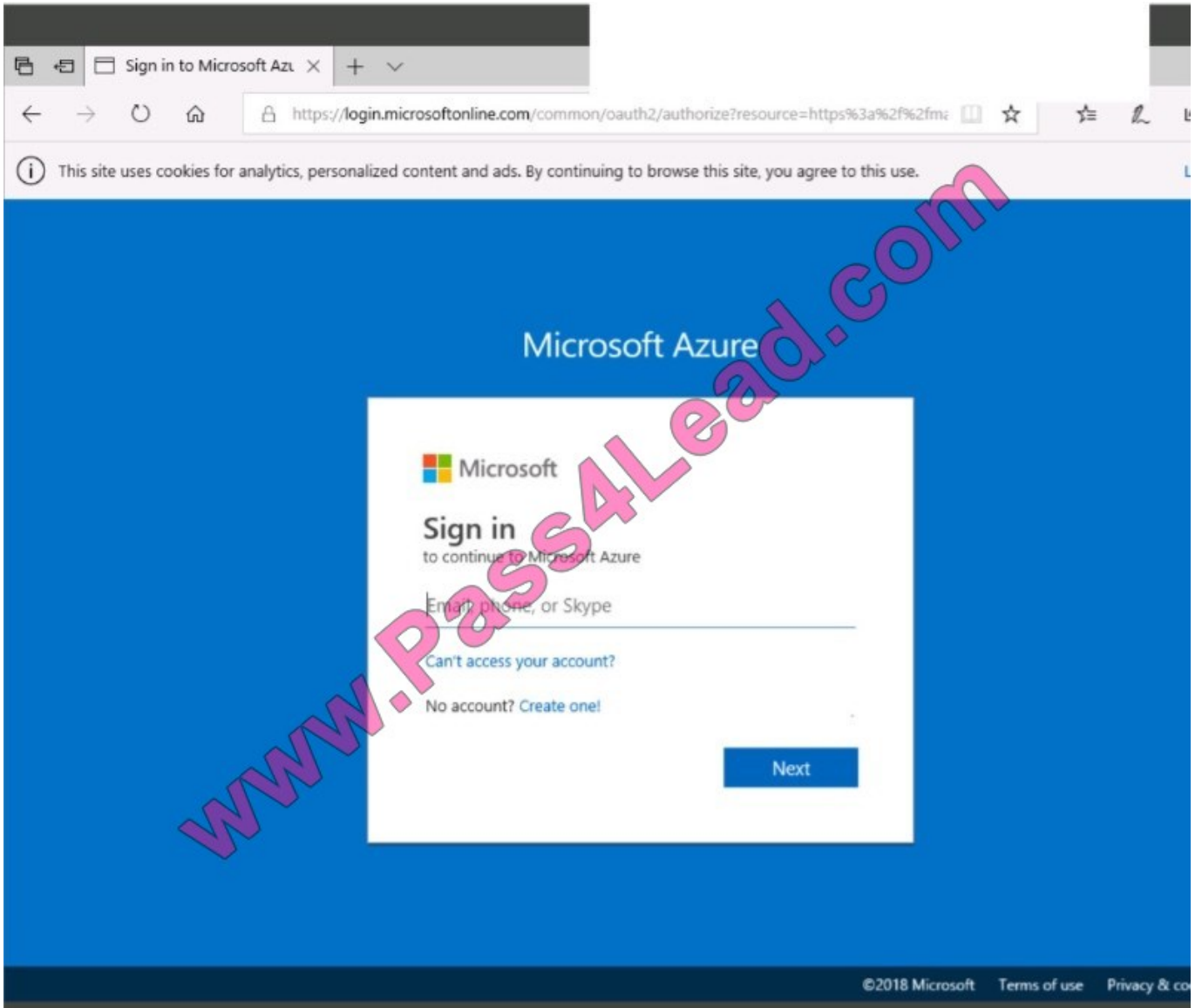
D: Basic supports only up to 3 instances.

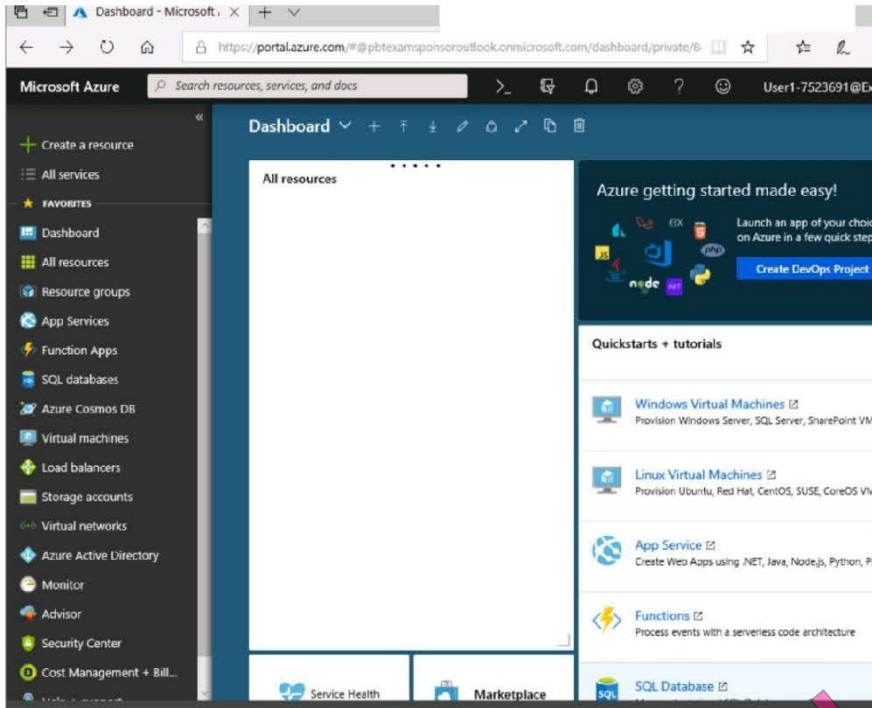
References: <https://azure.microsoft.com/en-us/pricing/details/app-service/windows/>

QUESTION 4

SIMULATION

Click to expand each objective. To connect to the Azure portal, type <https://portal.azure.com> in the browser address bar.





Home > Storage accounts > Create storage account

Create storage account

✓ Validation passed

Basics Advanced Tags Review + create

BASICS

Subscription	Microsoft AZ-100 5
Resource group	corpdata7523690
Location	East US
Storage account name	corpdata7523690n1
Deployment model	Resource manager
Account kind	StorageV2 (general purpose v2)
Replication	Read-access geo-redundant storage (RA-GRS)
Performance	Standard
Access tier (default)	Hot

ADVANCED

Secure transfer required	Enabled
Hierarchical namespace	Disabled

Create Previous Next Download a template for automation



Home > Storage accounts > Create storage account

Create storage account

Submitting deployment...

Submitting the deployment template for resource 'corpdata7523690'.

Basics Advanced Tags Review + create

BASICS

Subscription	Microsoft AZ-300 5
Resource group	corpdata7523690
Location	East US
Storage account name	corpdata7523690n1
Deployment model	Resource manager
Account kind	StorageV2 (general purpose v2)
Replication	Read-access geo-redundant storage (RA-GRS)
Performance	Standard
Access tier (default)	Hot

ADVANCED

Secure transfer required	Enabled
Hierarchical namespace	Disabled





Home > Microsoft.StorageAccount-20181011170335 - Overview

Microsoft.StorageAccount-20181011170335 - Overview

Deployment

Search (Ctrl+/)

Delete Cancel Redeploy Refresh

Overview

Outputs

Inputs

Template

Your deployment is underway

Check the status of your deployment, manage resources, or troubleshoot deployment issues. Pin this page to your dashboard to easily find it next time.



Deployment
name: Microsoft.StorageAccount-20181011170335
Subscription: Microsoft AZ-100 5
Resource group: corpdatalod7523690

DEPLOYMENT DETAILS [\(Download\)](#)

Start time: 10/11/2018 5:04:06 PM
Duration: 17 seconds
Correlation ID: bd0806a4-d1bd-42db-be6b-55e0ec38f49b

RESOURCE	TYPE	STATUS	OPERATI...
----------	------	--------	------------

No results.

Home > Virtual machines > Create a virtual machine

Create a virtual machine

Validation failed. Required information is missing or not valid.

Basics **Disks** Networking Management Guest config Tags Review + create

PRODUCT DETAILS

Ubuntu Server 18.04 LTS

by Canonical

[Terms of use](#) | [Privacy policy](#)

Standard D2s v3

by Microsoft

[Terms of use](#) | [Privacy policy](#)

Pricing not available for this offering

View [Pricing details](#) for more information.

Subscription credits apply

0.0960 USD/hr

[Pricing for other VM sizes](#)

TERMS

By clicking "Create", I (a) agree to the legal terms and privacy statement(s) associated with the Marketplace offering(s) listed above; (b) authorize Microsoft to bill my current payment method for the fees associated with the offering(s), with the same billing frequency as my Azure subscription; and (c) agree that Microsoft may share my contact, usage and transactional information with the provider(s) of the offering(s) for support, billing and other transactional activities. Microsoft does not provide rights for third-party offerings. See the [Azure Marketplace Terms](#) for additional details.



When you are finished performing all the tasks, click the 'Next' button.

Note that you cannot return to the lab once you click the 'Next' button. Scoring occurs in the background while you complete the rest of the exam.

Overview The following section of the exam is a lab. In this section, you will perform a set of tasks in a live environment. While most functionality will be available to you as it would be in a live environment, some functionality (e.g., copy and paste, ability to navigate to external websites) will not be possible by design.

Scoring is based on the outcome of performing the tasks stated in the lab. In other words, it doesn't matter how you accomplish the task, if you successfully perform it, you will earn credit for that task.

Labs are not timed separately, and this exam may have more than one lab that you must complete. You can use as much time as you would like to complete each lab. But, you should manage your time appropriately to ensure that you are able to complete the lab(s) and all other sections of the exam in the time provided.

Please note that once you submit your work by clicking the Next button within a lab, you will NOT be able to return to the lab.

To start the lab

You may start the lab by clicking the Next button.

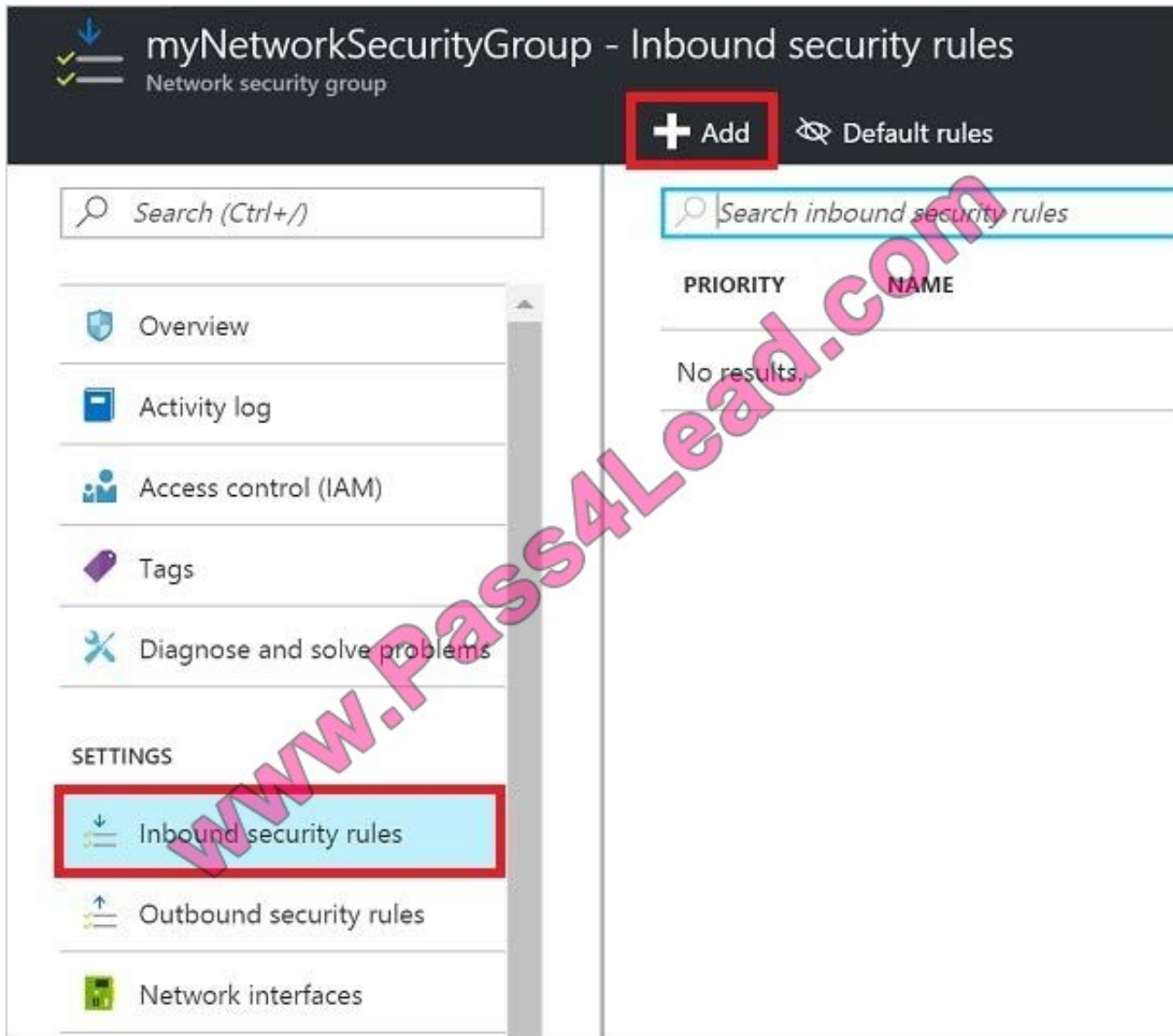
You need to allow RDP connections over TCP port 3389 to VM1 from the Internet. The solutions must prevent connections from the Internet over all other TCP ports.

What should you do from the Azure portal?

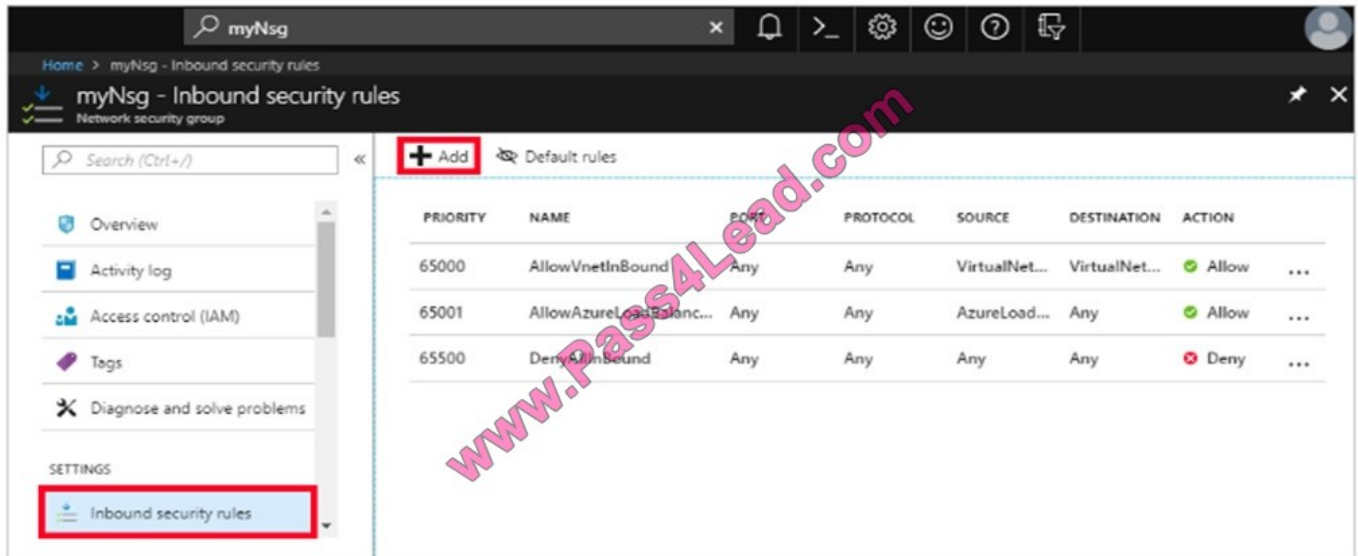
Correct Answer: See solution below.

Step 1: Create a new network security group

Step 2: Select your new network security group.



Step 3: Select Inbound security rules. Under Add inbound security rule, enter the following Destination: Select Network security group, and then select the security group you created previously. Destination port ranges: 3389 Protocol: Select TCP



References: <https://docs.microsoft.com/en-us/azure/virtual-network/tutorial-filter-network-traffic>

QUESTION 5

You have an Azure Service Bus.

You need to implement a Service Bus queue that guarantees first-in-first-out (FIFO) delivery of messages.

What should you do?

- A. Enable partitioning
- B. Enable duplicate detection
- C. Set the Lock Duration setting to 10 seconds
- D. Enable sessions
- E. Set the Max Size setting of the queue to 5 GB

Correct Answer: D

References: <https://docs.microsoft.com/en-us/azure/service-bus-messaging/service-bus-azure-and-service-bus-queues-compared-contrasted>

[AZ-300 PDF Dumps](#)

[AZ-300 Exam Questions](#)

[AZ-300 Braindumps](#)



To Read the [Whole Q&As](#), please purchase the [Complete Version](#) from [Our website](#).

Try our product !

100% Guaranteed Success

100% Money Back Guarantee

365 Days Free Update

Instant Download After Purchase

24x7 Customer Support

Average 99.9% Success Rate

More than 800,000 Satisfied Customers Worldwide

Multi-Platform capabilities - [Windows](#), [Mac](#), [Android](#), [iPhone](#), [iPod](#), [iPad](#), [Kindle](#)

We provide exam PDF and VCE of Cisco, Microsoft, IBM, CompTIA, Oracle and other IT Certifications. You can view Vendor list of All Certification Exams offered:

<https://www.pass4lead.com/allproducts>

Need Help

Please provide as much detail as possible so we can best assist you.

To update a previously submitted ticket:



 <p>One Year Free Update Free update is available within One Year after your purchase. After One Year, you will get 50% discounts for updating. And we are proud to boast a 24/7 efficient Customer Support system via Email.</p>	 <p>Money Back Guarantee To ensure that you are spending on quality products, we provide 100% money back guarantee for 30 days from the date of purchase.</p>	 <p>Security & Privacy We respect customer privacy. We use McAfee's security service to provide you with utmost security for your personal information & peace of mind.</p>
---	---	--

Any charges made through this site will appear as Global Simulators Limited.

All trademarks are the property of their respective owners.

Copyright © pass4lead, All Rights Reserved.