



AZ-303^{Q&As}

Microsoft Azure Architect Technologies

Pass Microsoft AZ-303 Exam with 100% Guarantee

Free Download Real Questions & Answers **PDF** and **VCE** file from:

<https://www.pass4lead.com/az-303.html>

100% Passing Guarantee
100% Money Back Assurance

Following Questions and Answers are all new published by Microsoft
Official Exam Center

-  **Instant Download** After Purchase
-  **100% Money Back** Guarantee
-  **365 Days** Free Update
-  **800,000+** Satisfied Customers





QUESTION 1

You create a social media application that users can use to upload images and other content.

Users report that adult content is being posted in an area of the site that is accessible to and intended for young children.

You need to automatically detect and flag potentially offensive content. The solution must not require any custom coding other than code to scan and evaluate images.

What should you implement?

- A. Bing Visual Search
- B. Bing Image Search
- C. Custom Vision Search
- D. Computer Vision API

Correct Answer: D

QUESTION 2

SIMULATION

You plan to grant the members of a new Azure AD group named corp8548987 the rights to delegate administrative access to any resource in the resource group named corp8548987.

You need to create the Azure AD group, and then to assign the correct role to the group. The solution must use the principle of least privilege and minimize the number of role assignments.

What should you do from the Azure portal?

Correct Answer: See below.

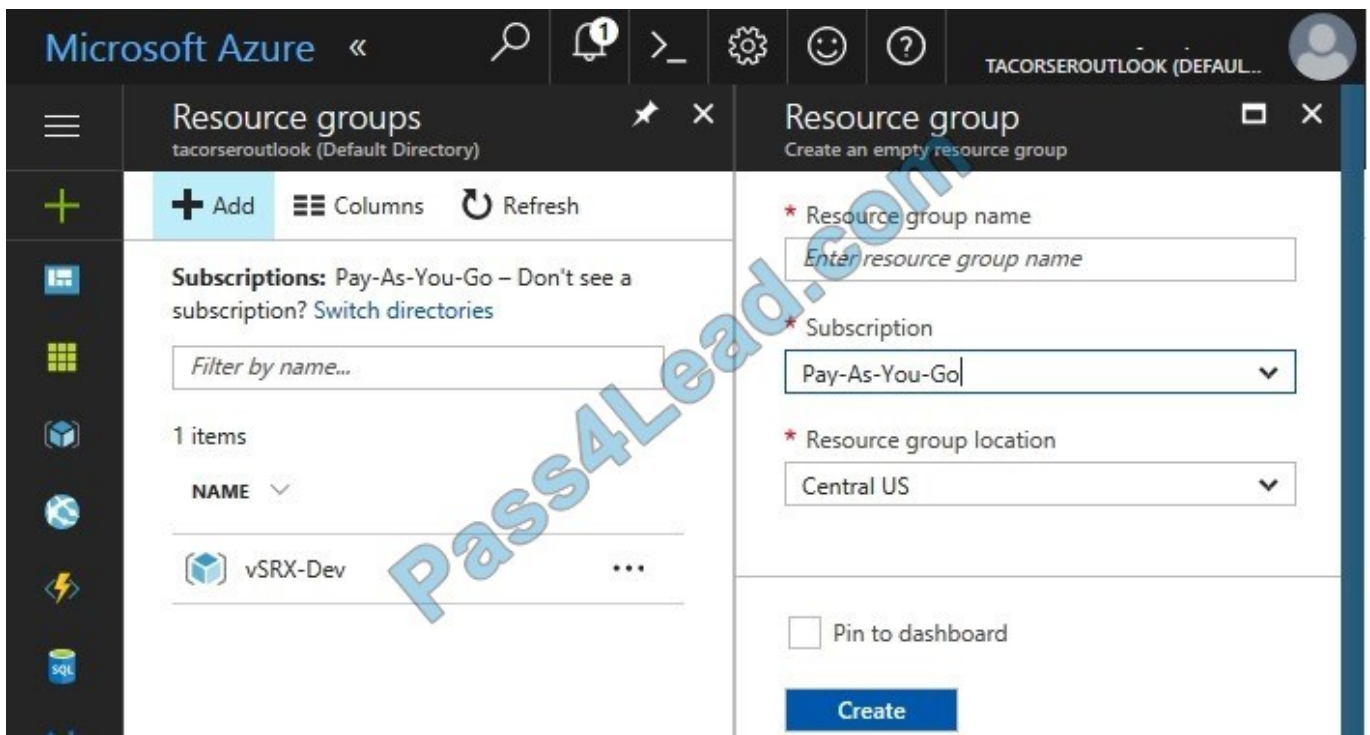
Step 1:

Click Resource groups from the menu of services to access the Resource Groups blade



Step 2:

Click Add (+) to create a new resource group. The Create Resource Group blade appears. Enter corp8548987 as the Resource group name, and click the Create button.



Step 3:

Select Create.

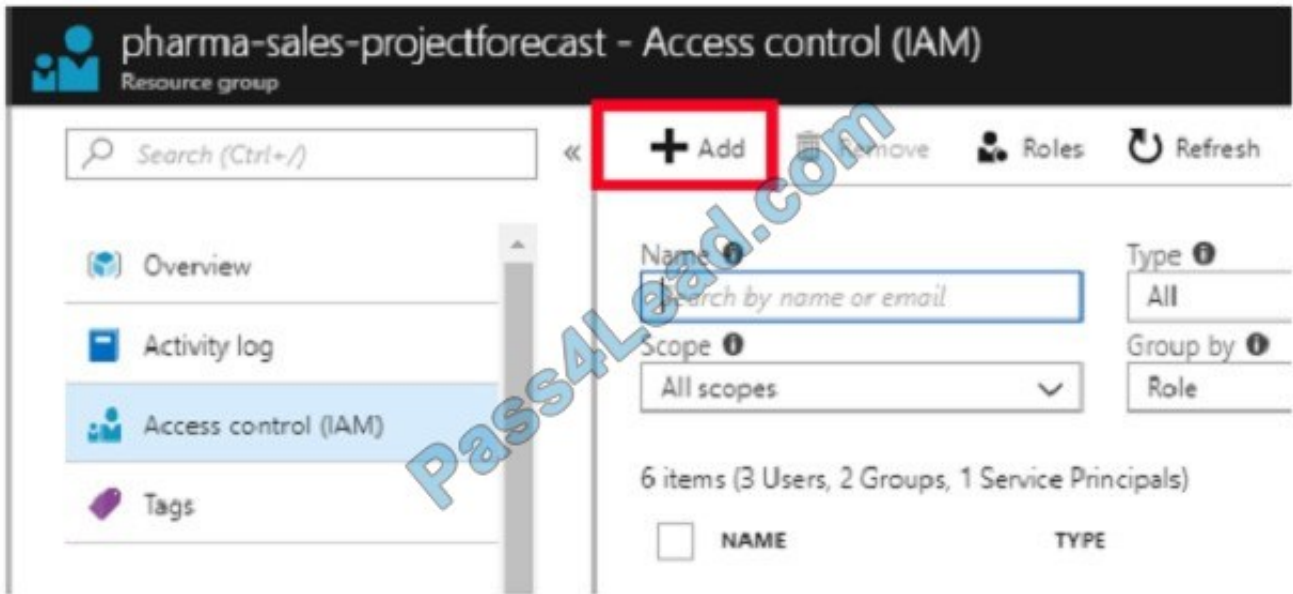
Your group is created and ready for you to add members.

Now we need to assign a role to this resource group scope.

Step 4:

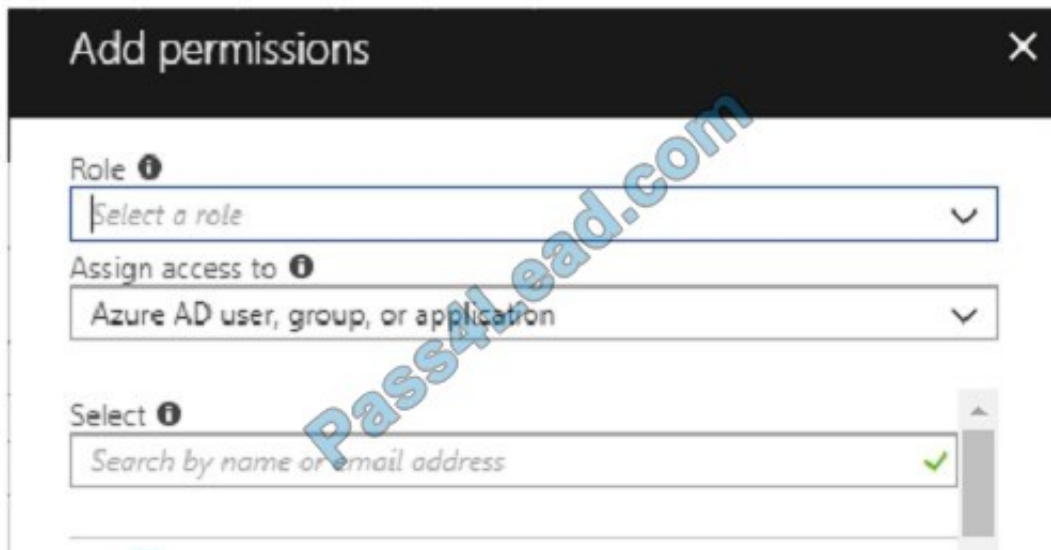


Choose the newly created Resource group, and Access control (IAM) to see the current list of role assignments at the resource group scope. Click +Add to open the Add permissions pane.



Step 5:

In the Role drop-down list, select a role Delegate administration, and select Assign access to: resource group corp8548987



References: <https://docs.microsoft.com/en-us/azure/role-based-access-control/role-assignments-portal>

https://www.juniper.net/documentation/en_US/vsrx/topics/task/multi-task/security-vsrx-azure-marketplace-resource-group.html

QUESTION 3

HOTSPOT



You need to implement Role1.

Which command should you run before you create Role1? To answer, select the appropriate options in the answer area.

NOTE: Each correct selection is worth one point.

Hot Area:

Answer Area

	-Name "Reader"									
<table border="1"> <tr><td>Find-RoleCapability</td></tr> <tr><td>Get-AzureADDirectoryRole</td></tr> <tr><td>Get-AzureRmRoleAssignment</td></tr> <tr><td>Get-AzureRmRoleDefinition</td></tr> </table>	Find-RoleCapability	Get-AzureADDirectoryRole	Get-AzureRmRoleAssignment	Get-AzureRmRoleDefinition		<table border="1"> <tr><td>ConvertFrom-Json</td></tr> <tr><td>ConvertFrom-String</td></tr> <tr><td>ConvertTo-Json</td></tr> <tr><td>ConvertTo-Xml</td></tr> </table>	ConvertFrom-Json	ConvertFrom-String	ConvertTo-Json	ConvertTo-Xml
Find-RoleCapability										
Get-AzureADDirectoryRole										
Get-AzureRmRoleAssignment										
Get-AzureRmRoleDefinition										
ConvertFrom-Json										
ConvertFrom-String										
ConvertTo-Json										
ConvertTo-Xml										

Correct Answer:

Answer Area

	-Name "Reader"									
<table border="1"> <tr><td>Find-RoleCapability</td></tr> <tr><td>Get-AzureADDirectoryRole</td></tr> <tr><td>Get-AzureRmRoleAssignment</td></tr> <tr style="background-color: #e0ffe0;"><td>Get-AzureRmRoleDefinition</td></tr> </table>	Find-RoleCapability	Get-AzureADDirectoryRole	Get-AzureRmRoleAssignment	Get-AzureRmRoleDefinition		<table border="1"> <tr><td>ConvertFrom-Json</td></tr> <tr><td>ConvertFrom-String</td></tr> <tr style="background-color: #e0ffe0;"><td>ConvertTo-Json</td></tr> <tr><td>ConvertTo-Xml</td></tr> </table>	ConvertFrom-Json	ConvertFrom-String	ConvertTo-Json	ConvertTo-Xml
Find-RoleCapability										
Get-AzureADDirectoryRole										
Get-AzureRmRoleAssignment										
Get-AzureRmRoleDefinition										
ConvertFrom-Json										
ConvertFrom-String										
ConvertTo-Json										
ConvertTo-Xml										

QUESTION 4

DRAG DROP

You plan to create a Docker image that runs an ASP.NET Core application named ContosoApp. You have a setup script named setupScript.ps1 and a series of application files including ContosoApp.dll.

You need to create a Dockerfile document that meets the following requirements:

Call setupScript.ps1 when the container is built.

Run ContosoApp.dll when the container starts.

The Dockerfile document must be created in the same folder where ContosoApp.dll and setupScript.ps1 are stored.

Which four commands should you use to develop the solution? To answer, move the appropriate commands from the list of commands to the answer area and arrange them in the correct order.

Select and Place:



Commands

```
RUN powershell ./setupScript.ps1  
CMD ["dotnet", "ContosoApp.dll"]  
  
FROM microsoft/aspnetcore:2.0  
  
CMD powershell ./setupScript.ps1  
ENTRYPOINT ["dotnet",  
"ContosoApp.dll"]  
  
WORKDIR /apps/ContosoApp  
  
EXPOSE /ContosoApp /apps/ContosoApp  
  
COPY ./
```

Answer Area

Pass4Lead.com

Correct Answer:



Commands

```
CMD powershell ./setupScript.ps1  
ENTRYPOINT ["dotnet",  
"ContosoApp.dll"]
```

```
EXPOSE ./ContosoApp /apps/ContosoApp
```

Answer Area

```
FROM microsoft/aspnetcore:2.0
```

```
WORKDIR /apps/ContosoApp
```

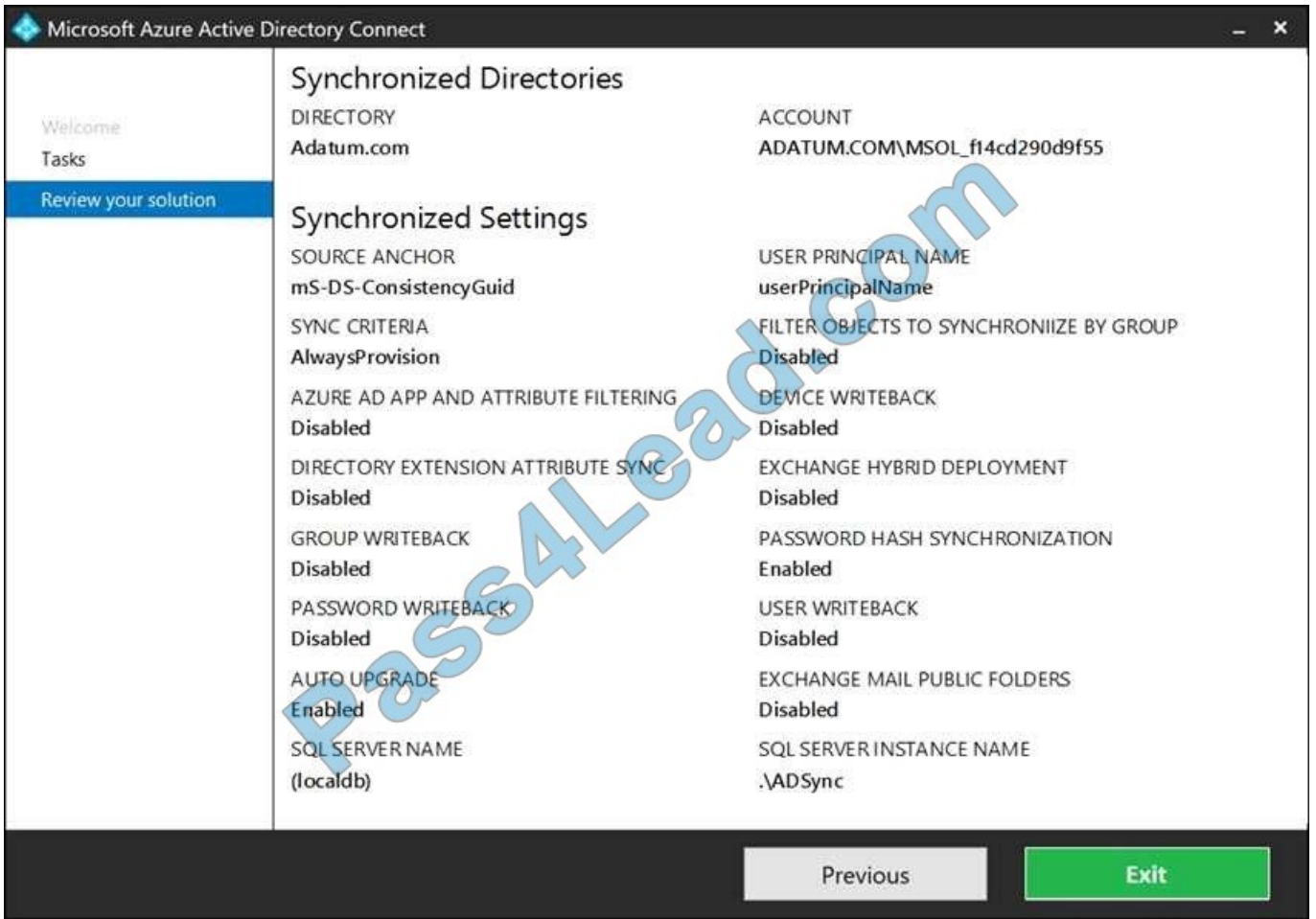
```
COPY ./
```

```
RUN powershell ./setupScript.ps1  
CMD ["dotnet", "ContosoApp.dll"]
```

QUESTION 5

HOTSPOT

You network contains an Active Directory domain that is synced to Azure Active Directory (Azure AD) as shown in the following exhibit.



You have a user account configured as shown in the following exhibit.

For each of the following statements, select Yes if the statement is true. Otherwise, select No.

NOTE: Each correct selection is worth one point.

Hot Area:

Answer Area

Statements	Yes	No
From the Azure portal, an administrator can reset the password of Adam Hobbs.	<input type="radio"/>	<input type="radio"/>
From the Azure portal, an administrator can modify the job title for the user account of Adam Hobbs.	<input type="radio"/>	<input type="radio"/>
From the Azure portal, an administrator can modify the usage location for the user account of Adam Hobbs.	<input type="radio"/>	<input type="radio"/>



Correct Answer:

Answer Area

Statements	Yes	No
From the Azure portal, an administrator can reset the password of Adam Hobbs.	<input type="radio"/>	<input checked="" type="radio"/>
From the Azure portal, an administrator can modify the job title for the user account of Adam Hobbs.	<input type="radio"/>	<input checked="" type="radio"/>
From the Azure portal, an administrator can modify the usage location for the user account of Adam Hobbs.	<input checked="" type="radio"/>	<input type="radio"/>

Box 1: No

Password writeback is disabled.

Note: Having a cloud-based password reset utility is great but most companies still have an on-premises directory where their users exist. How does Microsoft support keeping traditional on-premises Active Directory (AD) in sync with password changes in the cloud? Password writeback is a feature enabled with Azure AD Connect that allows password changes in the cloud to be written back to an existing on-premises directory in real time.

Box 2: No

Box 3: Yes

Yes, there is an Edit link for Location Info.

References:

<https://docs.microsoft.com/en-us/azure/active-directory/authentication/concept-sspr-writeback>

[AZ-303 PDF Dumps](#)

[AZ-303 VCE Dumps](#)

[AZ-303 Practice Test](#)



To Read the [Whole Q&As](#), please purchase the [Complete Version](#) from [Our website](#).

Try our product !

100% Guaranteed Success

100% Money Back Guarantee

365 Days Free Update

Instant Download After Purchase

24x7 Customer Support

Average 99.9% Success Rate

More than 800,000 Satisfied Customers Worldwide

Multi-Platform capabilities - [Windows](#), [Mac](#), [Android](#), [iPhone](#), [iPod](#), [iPad](#), [Kindle](#)

We provide exam PDF and VCE of Cisco, Microsoft, IBM, CompTIA, Oracle and other IT Certifications. You can view Vendor list of All Certification Exams offered:

<https://www.pass4lead.com/allproducts>

Need Help

Please provide as much detail as possible so we can best assist you.

To update a previously submitted ticket:



 <p>One Year Free Update Free update is available within One Year after your purchase. After One Year, you will get 50% discounts for updating. And we are proud to boast a 24/7 efficient Customer Support system via Email.</p>	 <p>Money Back Guarantee To ensure that you are spending on quality products, we provide 100% money back guarantee for 30 days from the date of purchase.</p>	 <p>Security & Privacy We respect customer privacy. We use McAfee's security service to provide you with utmost security for your personal information & peace of mind.</p>
---	---	--

Any charges made through this site will appear as Global Simulators Limited.

All trademarks are the property of their respective owners.

Copyright © pass4lead, All Rights Reserved.