

AZ-800^{Q&As}

Administering Windows Server Hybrid Core Infrastructure

Pass Microsoft AZ-800 Exam with 100% Guarantee

Free Download Real Questions & Answers **PDF** and **VCE** file from:

<https://www.pass2lead.com/az-800.html>

100% Passing Guarantee
100% Money Back Assurance

Following Questions and Answers are all new published by Microsoft
Official Exam Center

-  **Instant Download** After Purchase
-  **100% Money Back** Guarantee
-  **365 Days** Free Update
-  **800,000+** Satisfied Customers



QUESTION 1

DRAG DROP

You deploy a single-domain Active Directory Domain Services (AD DS) forest named contoso.com.

You deploy five servers to the domain. You add the servers to a group named ITFarmHosts.

You plan to configure a Network Load Balancing (NLB) cluster named NLBCluster.contoso.com that will contain the five servers.

You need to ensure that the NLB service on the nodes of the cluster can use a group managed service account (gMSA) to authenticate.

Which three PowerShell cmdlets should you run in sequence? To answer, move the appropriate cmdlets from the list of cmdlets to the answer area and arrange them in the correct order.

Select and Place:

Cmdlets

Answer Area

New-ADServiceAccount

Install-ADServiceAccount

Add-ADComputerServiceAccount

Set-KdsConfiguration

Add-KdsRootKey

Add-ADGroupMember

Correct Answer:

Cmdlets

Add-ADComputerServiceAccount
Set-KdsConfiguration
Add-ADGroupMember

Answer Area

Add-KdsRootKey
New-ADServiceAccount
Install-ADServiceAccount

Reference: <https://docs.microsoft.com/en-us/windows-server/security/group-managed-service-accounts/create-the-key-distribution-services-kds-root-key> <https://docs.microsoft.com/en-us/windows-server/security/group-managed-service-accounts/getting-started-with-group-managed-service-accounts>

QUESTION 2

You have an on-premises Active Directory Domain Services (AD DS) domain that syncs with an Azure Active Directory (Azure AD) tenant.

You plan deploy 100 new Azure virtual machines that will run Windows Server.

You need to ensure that each new virtual machine is joined to the AD DS domain.

What should you use?

- A. an Azure Resource Manager (ARM) template
- B. a Group Policy Object (GPO)
- C. Azure AD Connect
- D. an Azure management group

Correct Answer: A

Reference: <https://www.ludovicmedard.com/create-an-arm-template-of-a-virtual-machine-automatically-joined-to-a-domain/>

QUESTION 3

You have a server named Host1 that has the Hyper-V server role installed. Host1 hosts a virtual machine named VM1.

You have a management server named Server1 that runs Windows Server. You remotely manage Host1 from Server1 by using Hyper-V Manager.

You need to ensure that you can access a USB hard drive connected to Server1 when you connect to VM1 by using Virtual Machine Connection.

Which two actions should you perform? Each correct answer presents part of the solution.

NOTE: Each correct selection is worth one point.

- A. From the Hyper-V Settings of Host1, select Allow enhanced session mode.
- B. From Virtual Machine Connection, select Show Options, and then select the USB hard drive.
- C. From Virtual Machine Connection, switch to a basic session.
- D. From Disk Management on Host1, select Rescan Disks.
- E. From Disk Management on Host1, attach a virtual hard disk.

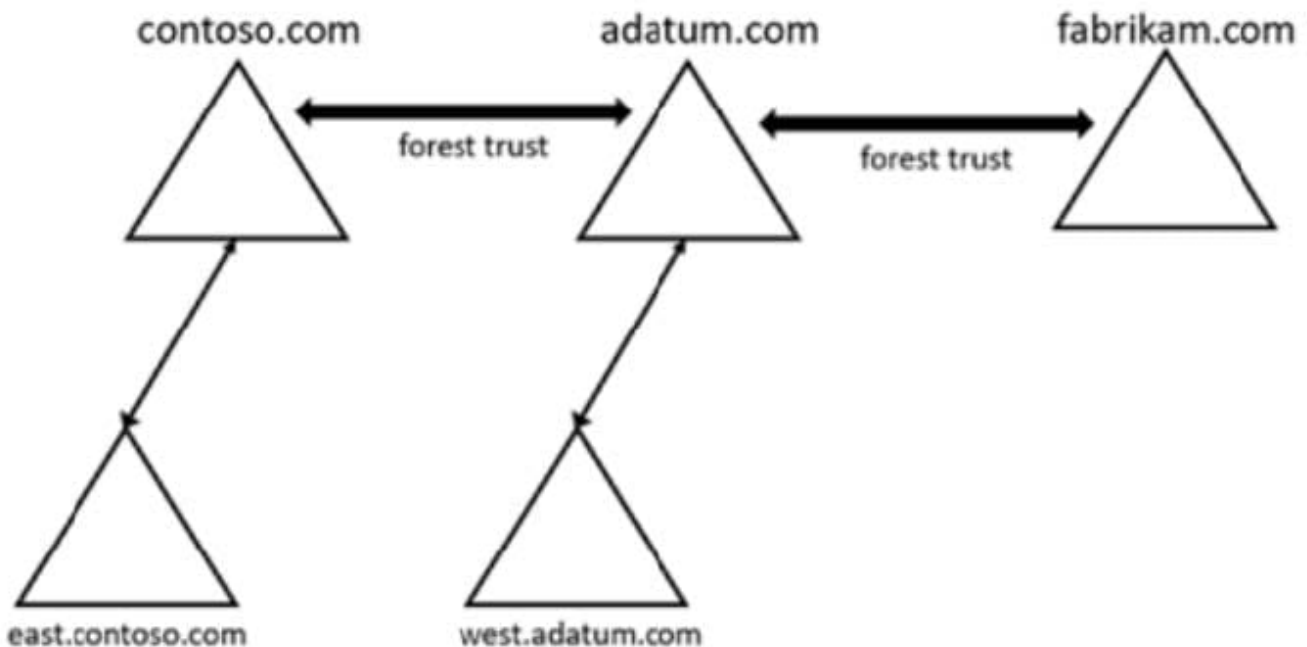
Correct Answer: AB

Reference: <https://docs.microsoft.com/en-us/windows-server/virtualization/hyper-v/learn-more/use-local-resources-on-hyper-v-virtual-machine-with-vmconnect>

QUESTION 4

HOTSPOT

Your network contains three Active Directory Domain Services (AD DS) forests as shown in the following exhibit.



The network contains the users shown in the following table.

Name	Domain
User1	east.contoso.com
User2	fabrikam.com

The network contains the security groups shown in the following table.

Name	Type	Domain
Group1	Domain local	west.adatum.com
Group2	Universal	contoso.com
Group3	Universal	east.contoso.com

For each of the following statements, select Yes if the statement is true. Otherwise, select No.

NOTE: Each correct selection is worth one point.

Hot Area:

Answer Area

Statements

You can add User1 to Group1.

Yes	No
<input type="radio"/>	<input type="radio"/>

You can add User2 to Group3.

<input type="radio"/>	<input type="radio"/>
-----------------------	-----------------------

You can grant Group2 permissions to the resources in the fabrikam.com domain.

<input type="radio"/>	<input type="radio"/>
-----------------------	-----------------------

Correct Answer:

Answer Area

Statements

You can add User1 to Group1.

Yes	No
<input checked="" type="radio"/>	<input type="radio"/>

You can add User2 to Group3.

<input type="radio"/>	<input checked="" type="radio"/>
-----------------------	----------------------------------

You can grant Group2 permissions to the resources in the fabrikam.com domain.

<input checked="" type="radio"/>	<input type="radio"/>
----------------------------------	-----------------------

Box 1: Yes

User1 is in east.contoso.com. Group1 is Domain Local group in west.adutm.com.

Accounts from any domain or any trusted domain Global groups from any domain or any trusted domain can be members of Domain Local groups.

Accounts, Global groups, and Universal groups from other forests and from external domains can also be members of Domain Local groups.

Box 2: No

User2 is in the fabrikam.com domain.

Group3 is a Universal group in east.contoso.com.

Only accounts from any domain in the same forest can be added as members.

Box 3: Yes

Group2 is a Universal group in contoso.com.

Group2 can grant permissions On any domain in the same forest or trusting forests.

Active Directory Domain Services add to Domain Local group.

Reference:

<https://docs.microsoft.com/en-us/windows/security/identity-protection/access-control/active-directory-security-groups>

QUESTION 5

SIMULATION

You need to replicate a read-only copy of a DNS zone named contoso.com D to SRV2.

To complete this task, sign in the required computer or computers.

A. See explanation below.

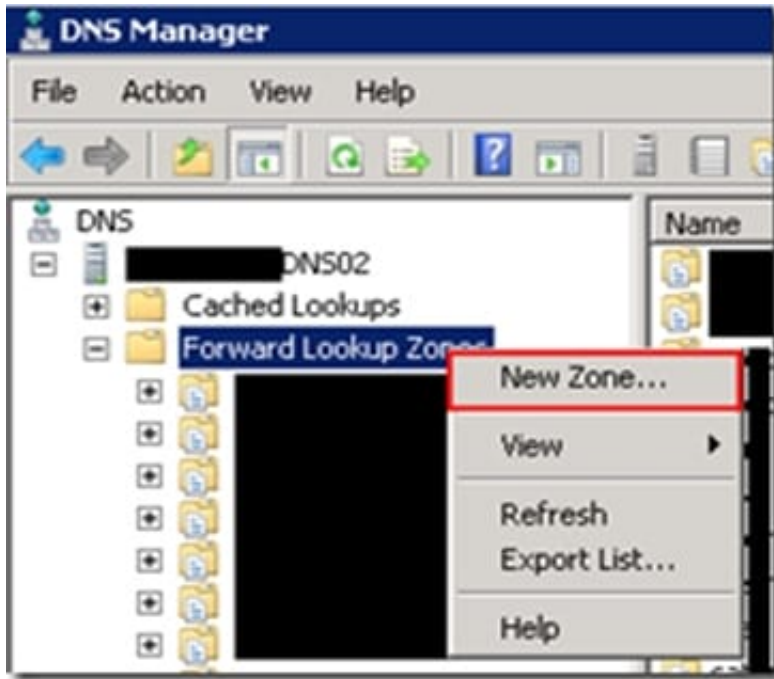
B. Placeholder

C. Placeholder

D. Placeholder

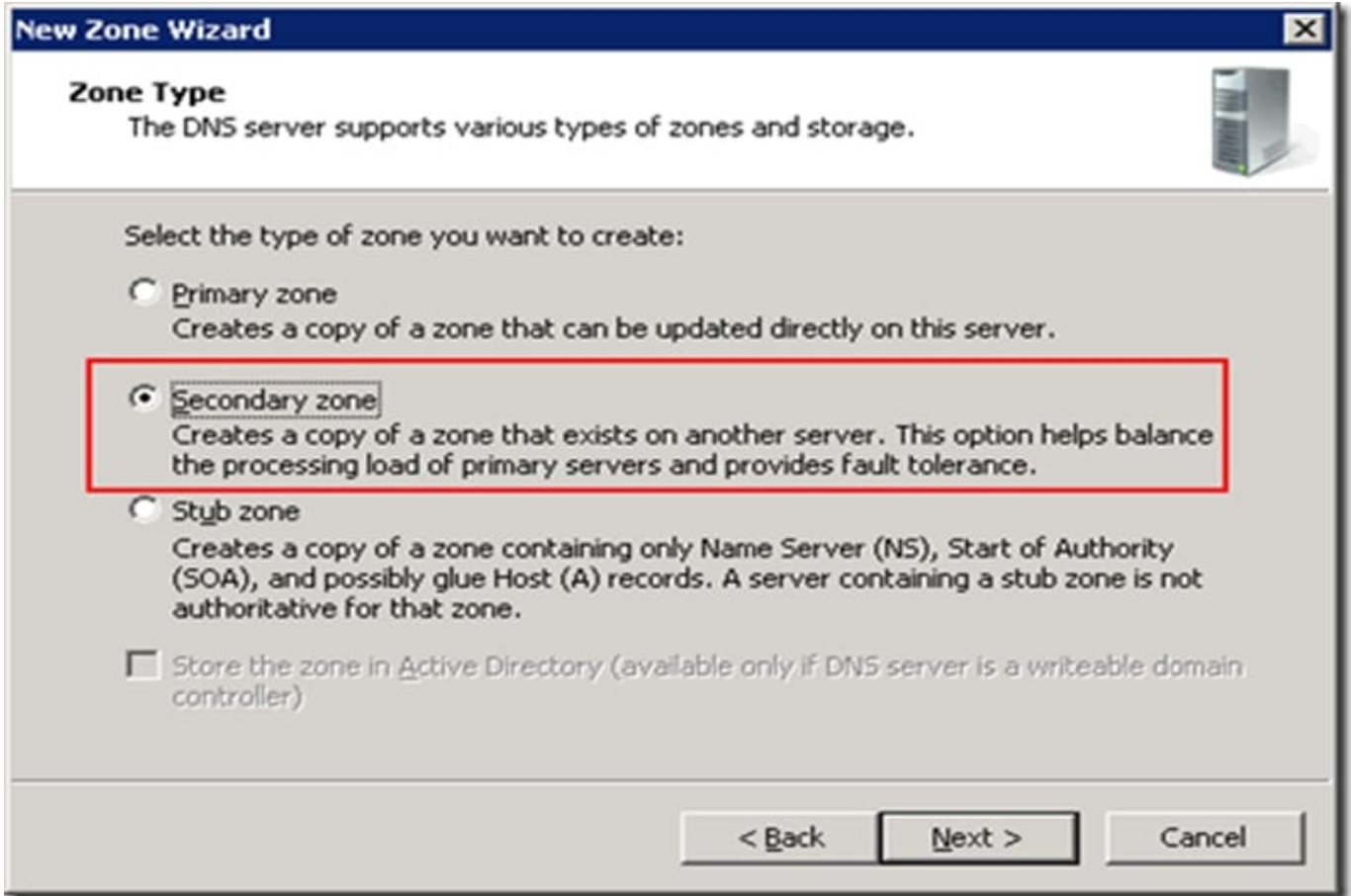
Correct Answer: A

Replicate read-only copy DNS zone. Step 1: In DNS Manager log in to SRV2.

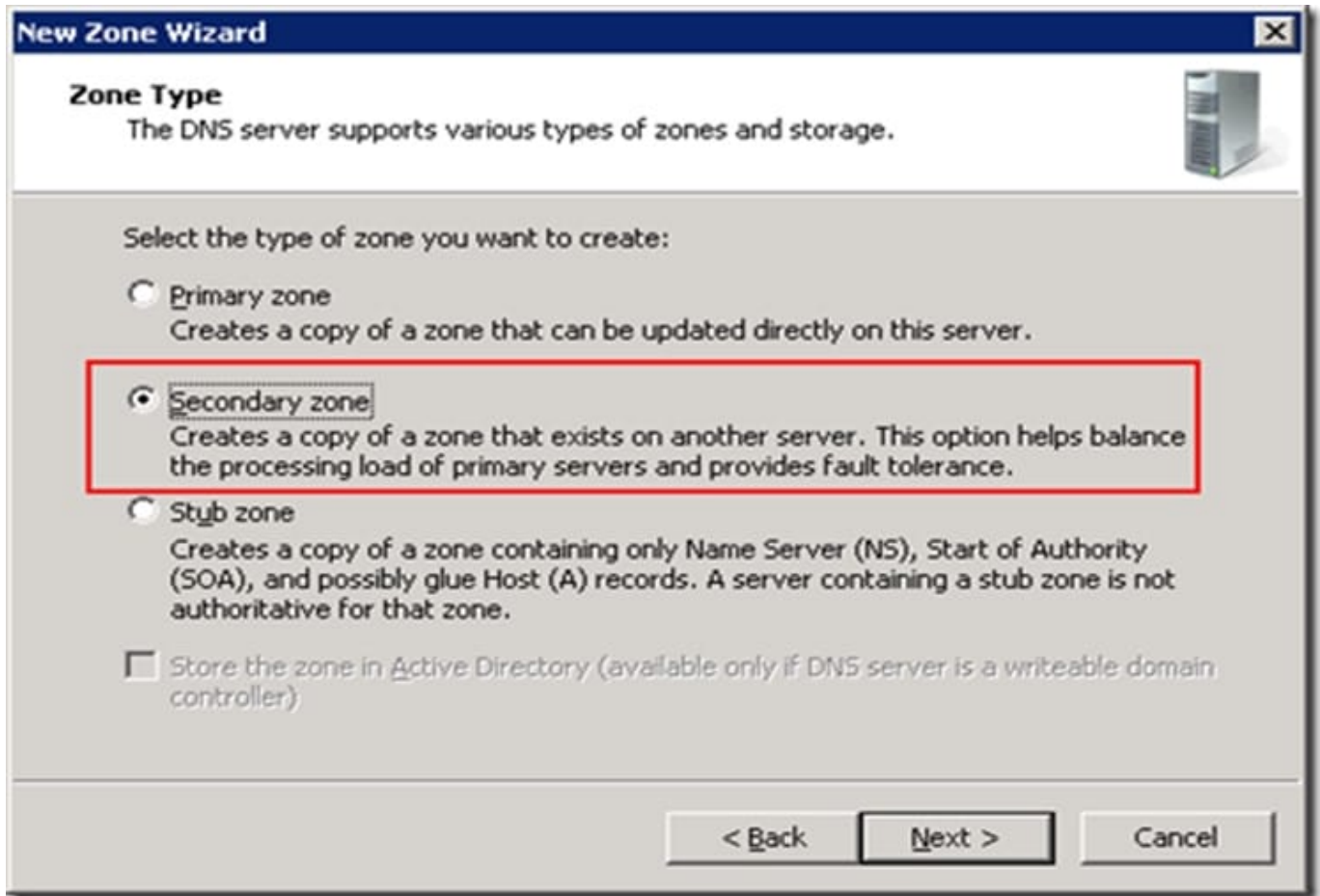


Step 2: Right click Forward Lookup Zones, and select New Zone...

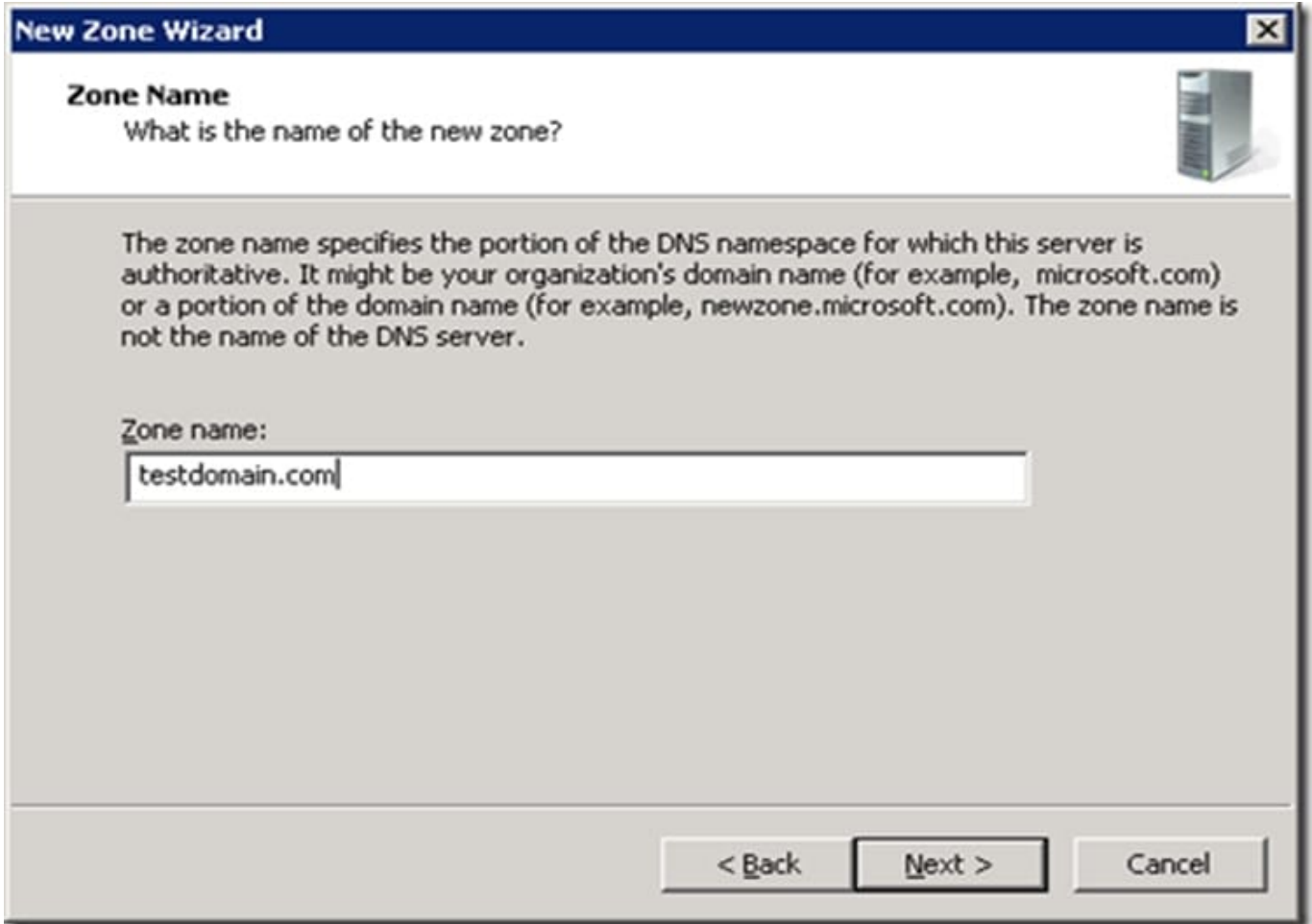
Step 3: Select Secondary Zone



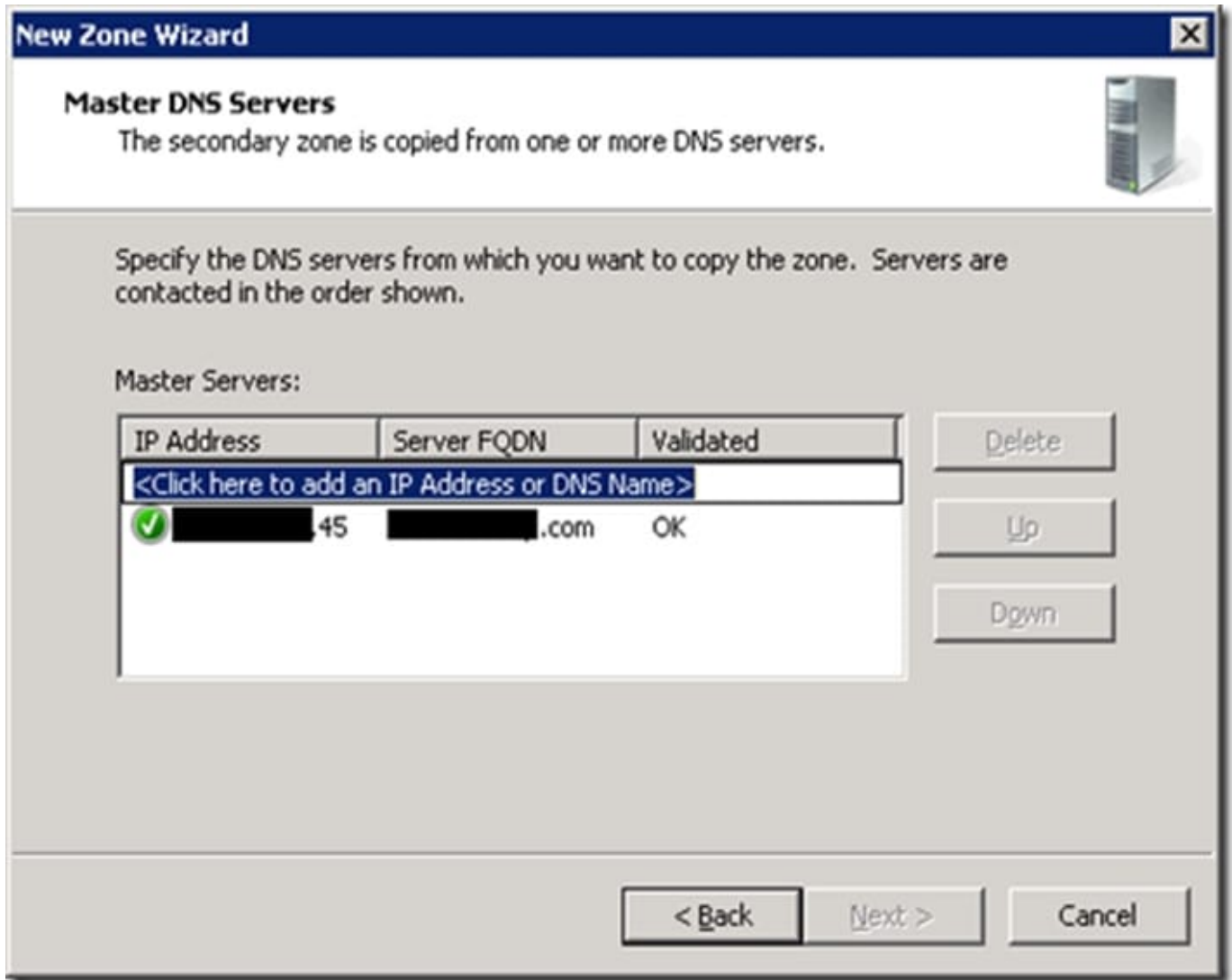
Step 4: Select Secondary Zone



Step 5: Enter the same domain name as the first DNS server. In our case: contoso.com



Step 6: At the next screen enter the Hostname or IP address of the primary DNS server and hit Enter. In our case: contoso.com



Step 7: Hit Next, Next, Finish – That's it, you're all done.

The secondary server will now replicate changes FROM the first DNS server.

Reference: <https://cogenesis.com.au/blog/how-to-setup-windows-dns-replication-dns-manager>

[Latest AZ-800 Dumps](#)

[AZ-800 Practice Test](#)

[AZ-800 Exam Questions](#)