

C2090-011^{Q&As}

IBM SPSS Statistics Level 1 v2

Pass IBM C2090-011 Exam with 100% Guarantee

Free Download Real Questions & Answers **PDF** and **VCE** file from:

<https://www.pass2lead.com/c2090-011.html>

100% Passing Guarantee
100% Money Back Assurance

Following Questions and Answers are all new published by IBM Official Exam Center

-  **Instant Download** After Purchase
-  **100% Money Back** Guarantee
-  **365 Days** Free Update
-  **800,000+** Satisfied Customers



QUESTION 1

IBM SPSS Statistics system variables can be:

- A. Used in data transformations.
- B. Specified in analysis procedures.
- C. Modified using Compute Variable.
- D. Viewed in the Data Editor.

Correct Answer: A

QUESTION 2

As the sample size increases, the amount of variability in the distribution of sample means increases.

- A. True
- B. False

Correct Answer: B

QUESTION 3

Which statement is the correct interpretation of this crosstab table?

BELIEF IN LIFE AFTER DEATH * GENDER OF RESPONDENT Crosstabulation

			GENDER OF RESPONDENT		Total
			Female	Male	
BELIEF IN LIFE AFTER DEATH	YES	Count	541	417	958
		% within BELIEF IN LIFE AFTER DEATH	56.5%	43.5%	100.0%
		% within GENDER OF RESPONDENT	86.0%	76.9%	81.8%
	NO	Count	88	125	213
		% within BELIEF IN LIFE AFTER DEATH	41.3%	58.7%	100.0%
		% within GENDER OF RESPONDENT	14.0%	23.1%	18.2%
Total	Count	629	542	1171	
	% within BELIEF IN LIFE AFTER DEATH	53.7%	46.3%	100.0%	
	% within GENDER OF RESPONDENT	100.0%	100.0%	100.0%	

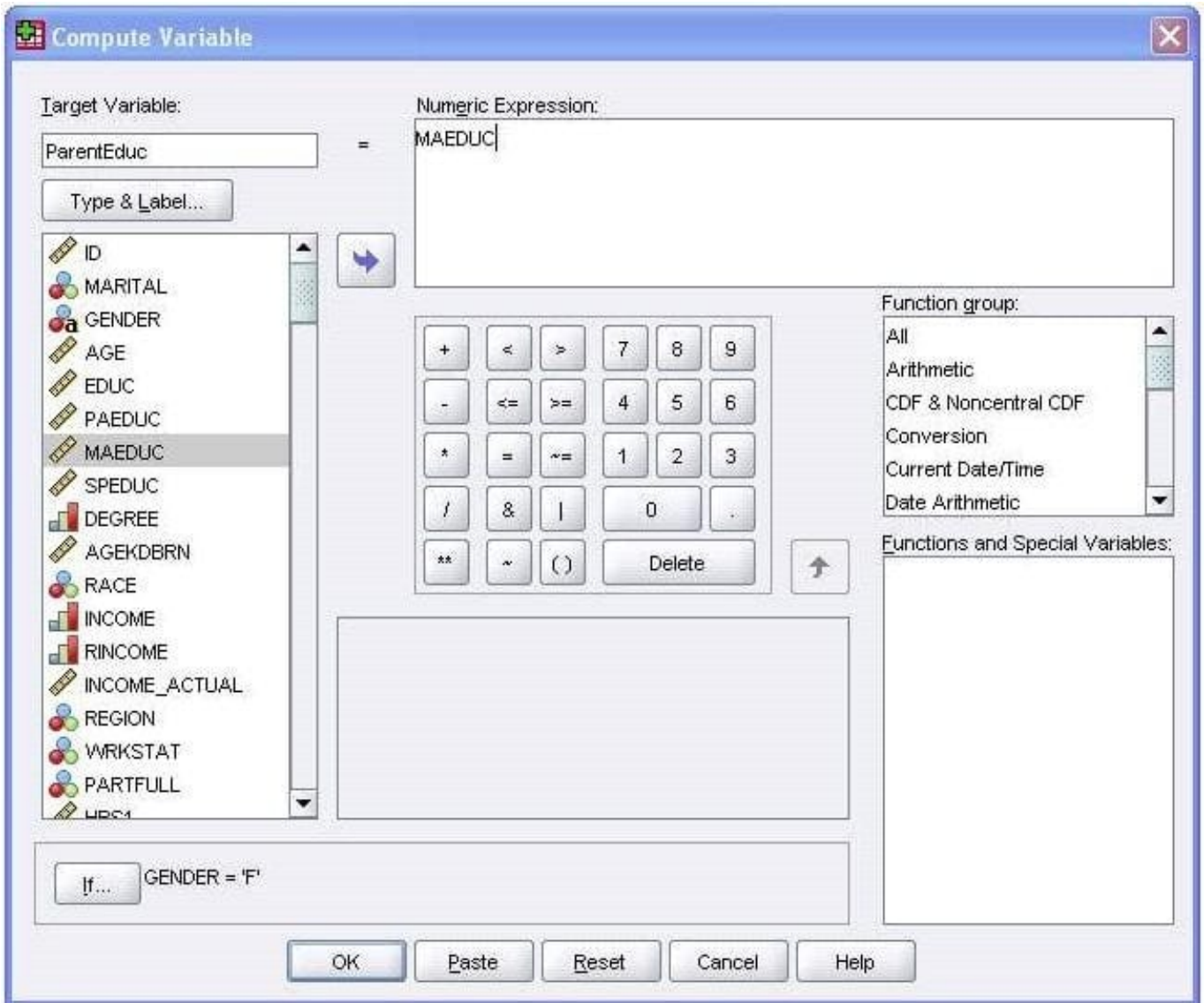
- A. 56.5% of females believe in life after death.

- B. 86.0% of females believe in life after death.
- C. 27.5% of females believe in life after death.
- D. 53.7% of females believe in life after death.

Correct Answer: B

QUESTION 4

The Compute Variable dialog shown below performs which of the following operations? (Choose two.)



- A. Sets the value of ParentEduc equal to the value of MAEDUC.
- B. Sets the value of ParentEduc equal to the value of MAEDUC if the value of GENDER is
- C.

D. Sets the value of ParentEduc equal to the system-missing value if the value of GENDER is blank.

E. Sets the value of ParentEduc equal to the user-missing value if the value of GENDER is blank.

Correct Answer: BC

QUESTION 5

An Independent Samples T-Test can be used to test whether there is a significant difference between the incomes of males and females.

A. True

B. False

Correct Answer: A

[Latest C2090-011 Dumps](#)

[C2090-011 Study Guide](#)

[C2090-011 Braindumps](#)