

CBAF-001^{Q&As}

Certified Business Analyst - Foundation

Pass GAQM CBAF-001 Exam with 100% Guarantee

Free Download Real Questions & Answers **PDF** and **VCE** file from:

<https://www.pass2lead.com/cbaf-001.html>

100% Passing Guarantee
100% Money Back Assurance

Following Questions and Answers are all new published by GAQM
Official Exam Center

- ⚙️ **Instant Download** After Purchase
- ⚙️ **100% Money Back** Guarantee
- ⚙️ **365 Days** Free Update
- ⚙️ **800,000+** Satisfied Customers



QUESTION 1

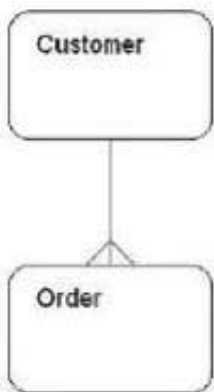
Which of the following may be used to document the outcomes of a workshop?

- A. Mind maps.
- B. Brainwriting.
- C. Roundrobin.
- D. Stepwise refinement.

Correct Answer: A

QUESTION 2

The entity relationship model below shows the relationship between Customer and Order. Which of the following business rules is correct?



- A. An order may be placed by many customers.
- B. A customer may place many orders.
- C. A customer may never place an order.
- D. An order need not be placed by a customer.

Correct Answer: B

QUESTION 3

What are subsequent changes subject to once a requirements document has been signed off?

- A. Requirements verification.
- B. Requirements documentation.

- C. Requirements validation.
- D. Requirements management.

Correct Answer: D

QUESTION 4

The following is a list of statements about stakeholders and stakeholder management.

a.

A customer can be considered as a stakeholder in a project.

b.

A supplier can be considered as a stakeholder in a project.

c.

Stakeholders' positions do not remain static during the life of the project.

d.

Communication must not be tailored to each stakeholder in the project.

Which of the following is correct?

- A. Statements a, b and c are correct, statement d is incorrect.
- B. All four statements are correct.
- C. Statements a and c are correct, statements b and d are incorrect.
- D. Statements b and c are correct, statements a and d are incorrect.

Correct Answer: A

QUESTION 5

Business rules define how actions are to be performed. Under which of the following headings are business rules considered?

- A. Explicit or implicit management statements.
- B. Statutory and internal policies.
- C. Constraints and operational guidance.
- D. Negotiable and non-negotiable limitations.

Correct Answer: C

[CBAF-001 VCE Dumps](#)

[CBAF-001 Practice Test](#)

[CBAF-001 Braindumps](#)