

DES-1241^{Q&As}

Specialist - Platform Engineer, PowerStore

Pass Dell DES-1241 Exam with 100% Guarantee

Free Download Real Questions & Answers **PDF** and **VCE** file from:

<https://www.pass2lead.com/des-1241.html>

100% Passing Guarantee
100% Money Back Assurance

Following Questions and Answers are all new published by Dell Official Exam Center

- ⚙️ **Instant Download** After Purchase
- ⚙️ **100% Money Back** Guarantee
- ⚙️ **365 Days** Free Update
- ⚙️ **800,000+** Satisfied Customers



QUESTION 1



Refer to the exhibit.

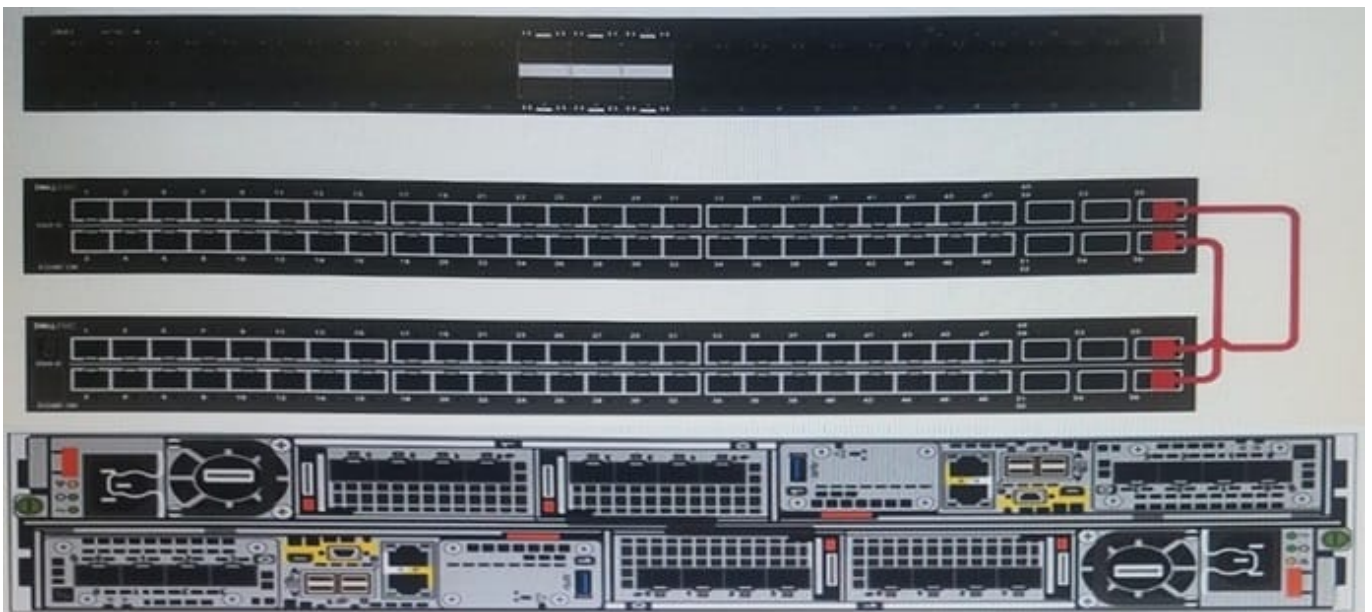
A Storage Administrator is troubleshooting a Dell EMC PowerStore T hardware issue. They observe that the base enclosure LED circled is blue. What does this indicate?

- A. Base enclosure hardware is operating normally
- B. Base enclosure has a component hardware fault
- C. Cluster has only a single appliance
- D. Appliance has a node in service mode

Correct Answer: A

Reference: <https://www.dell.com/support/manuals/pk/en/pkbsd1/powerstore-9000t/pwrstr-isg/embedded-module-leds?guid=guid-bc07892c-75cf-43b6-8f17-8a4c49001aeb&lang=en-us>

QUESTION 2



Refer to the exhibit.

What type of cable is used for the ToR switch configuration shown for the S5248F-ON switches?

- A. 10 GigE Cat 6 Ethernet RJ-45
- B. 25 GigE Twinax
- C. 100 GigE QSFP28
- D. 10 GigE SFP optical cable

Correct Answer: C

Reference: <https://www.dell.com/resources/en-us/asset/technical-guides-support-information/solutions/h18242-read-y-stack-powerstore-dg.pdf?dgc=SMandcid=170850andlid=spr3492306896andlinkId=93885839>

QUESTION 3

What does the output of the PSTCLI command "nas_server show" display from a Dell EMC PowerStore T?

- A. If NAS servers are present if they are either NFS or Licensed
- B. Memory utilization and thread count for NFS NAS servers
- C. If NAS servers are present and if they are either Started or Degraded
- D. SIDs of SMB NAS servers joined to the AD Domain

Correct Answer: A

QUESTION 4

Which Dell EMC PowerStore model reserves the last two slots of the base enclosure for NVMe NVRAM?

- A. 3000
- B. 5000
- C. 7000
- D. 9000

Correct Answer: A

Reference: <https://www.dell.com/en-us/collaterals/unauth/white-papers/products/storage/h18241-dell-emc-powerstore-best-practices-guide.pdf> (9)

QUESTION 5

What safety equipment is critical to have on hand to avoid equipment failure before replacing any components in a Dell EMC PowerStore array?

- A. Maintenance Kit

B. ESD Kit

C. Stabilization Kit

D. Rail Kit

Correct Answer: B

Reference: <https://www.dell.com/support/manuals/en-pk/powerstore-9000t/pwrstr-isg/avoiding-electrostatic-discharge-esd-damage?guid=guid-d94c9c2a-3c04-4951-a8ab-87ba992cc6f6&lang=en-us>

[Latest DES-1241 Dumps](#)

[DES-1241 PDF Dumps](#)

[DES-1241 VCE Dumps](#)