

DES-1721^{Q&As}

Specialist - Implementation Engineer-SC Series Exam

Pass EMC DES-1721 Exam with 100% Guarantee

Free Download Real Questions & Answers **PDF** and **VCE** file from:

<https://www.pass2lead.com/des-1721.html>

100% Passing Guarantee
100% Money Back Assurance

Following Questions and Answers are all new published by EMC
Official Exam Center

-  **Instant Download** After Purchase
-  **100% Money Back** Guarantee
-  **365 Days** Free Update
-  **800,000+** Satisfied Customers



QUESTION 1

During the initial installation of a new SC9000 Storage Center, which Dell Storage Manager (DSM) Client option should be selected?

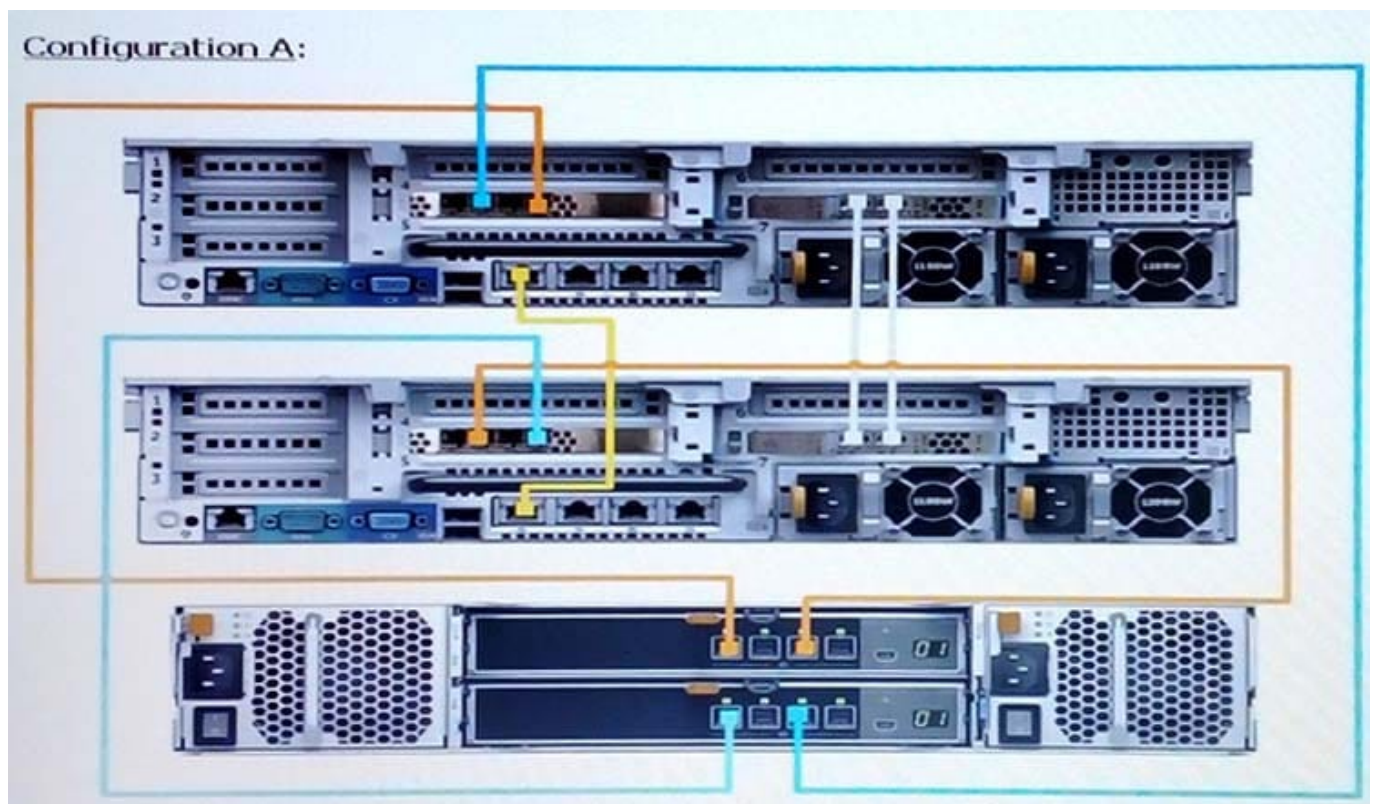
- A. Configure this host to access a Storage Center
- B. Configure VMware vSphere to access a Storage Center
- C. Discover and Configure Uninitialized SCv2000 or SC7000 Series Storage Centers
- D. Login to a Storage Center or Data Collector

Correct Answer: D

Reference: <https://www.dell.com/storagehelp/dellstorageclient/2016R3.10/en-US/GUID-8FE34707-CD62-4564-A7F0-6961963CEFE3.html>

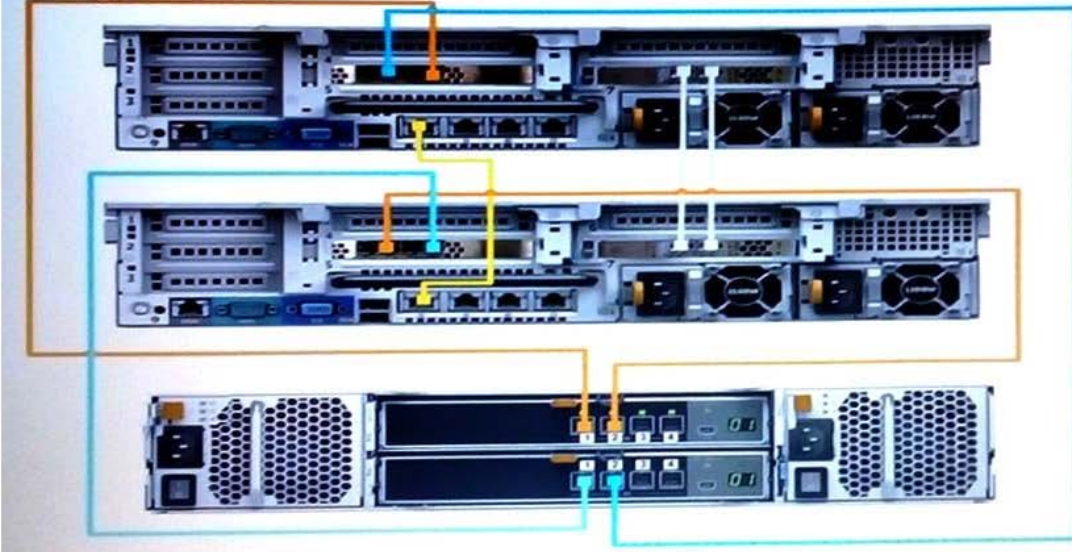
QUESTION 2

Based on best practices, which configuration represents how an SC9000 storage array with one SC420 expansion enclosure is cabled?

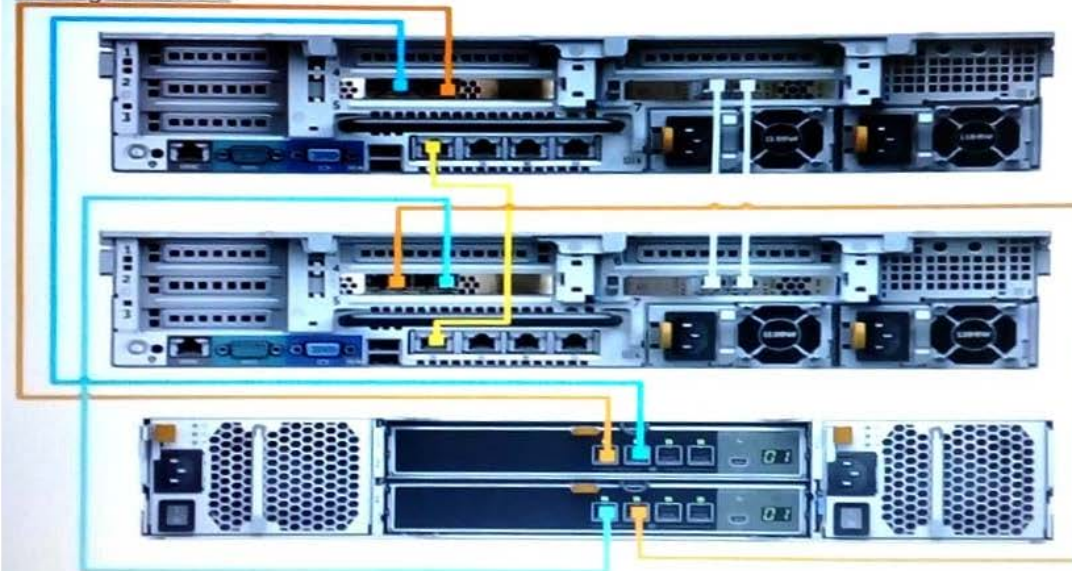


A.

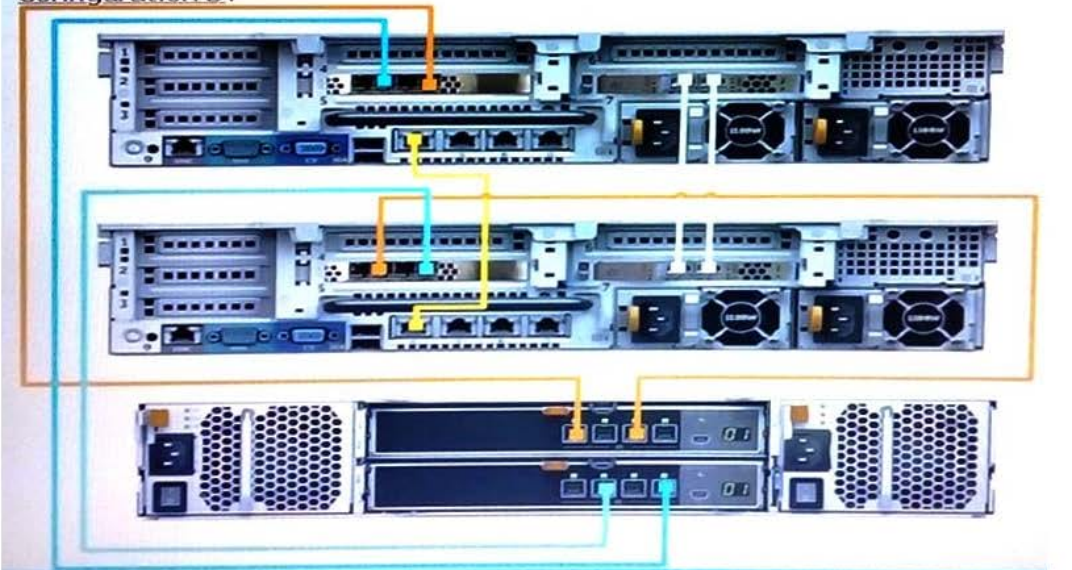
B. Configuration B:



C. Configuration C:



D. Configuration D:



B. C. D.

Correct Answer: C

QUESTION 3

How many SC420 enclosures can be supported by the SC7020 controller?

- A. 4
- B. 8
- C. 6
- D. 12

Correct Answer: B

Reference: http://topics-cdn.dell.com/pdf/storage-sc7020_owners-manual_en-us.pdf

QUESTION 4

Where are Dell Storage Manager (DSM) automated reports stored for later access?

- A. DSM database
- B. DSM file system
- C. First created volume
- D. External document management system

Correct Answer: B

QUESTION 5

What is the maximum number of Fault Domains on a SCv3000 Storage Center using SAS front-end?

- A. 1
- B. 2
- C. 3
- D. 4

Correct Answer: D

Reference: <https://www.dell.com/support/manuals/us/en/04/storage-scv3000/scv3000-scv3020-dg/fault-domains-for->

scv3000-series-storage-systems?guid=guid-bc3640b7-c0b1-46bf-a95a-970e2a3f9abfandlang=en-us

[DES-1721 Study Guide](#)

[DES-1721 Exam Questions](#)

[DES-1721 Braindumps](#)