



DP-200^{Q&As}

Implementing an Azure Data Solution

Pass Microsoft DP-200 Exam with 100% Guarantee

Free Download Real Questions & Answers **PDF** and **VCE** file from:

<https://www.pass4lead.com/dp-200.html>

100% Passing Guarantee
100% Money Back Assurance

Following Questions and Answers are all new published by Microsoft
Official Exam Center

-  **Instant Download** After Purchase
-  **100% Money Back** Guarantee
-  **365 Days** Free Update
-  **800,000+** Satisfied Customers





QUESTION 1

DRAG DROP

Your company analyzes images from security cameras and sends to security teams that respond to unusual activity. The solution uses Azure Databricks.

You need to send Apache Spark level events, Spark Structured Streaming metrics, and application metrics to Azure Monitor.

Which three actions should you perform in sequence? To answer, move the appropriate actions from the list of actions in the answer area and arrange them in the correct order.

Select and Place:

Actions	Answer Area
Create a data source in Azure Monitor.	
Configure the Databricks cluster to use the Databricks monitoring library.	
Deploy Grafana to an Azure virtual machine.	
Build a <code>spark-listeners-loganalytics-1.0-SNAPSHOT.jar</code> JAR file.	
Create Dropwizard counters in the application code.	

Correct Answer:

Actions	Answer Area
Create a data source in Azure Monitor.	Configure the Databricks cluster to use the Databricks monitoring library.
	Build a <code>spark-listeners-loganalytics-1.0-SNAPSHOT.jar</code> JAR file.
Deploy Grafana to an Azure virtual machine.	Create Dropwizard counters in the application code.

You can send application logs and metrics from Azure Databricks to a Log Analytics workspace.

Spark uses a configurable metrics system based on the Dropwizard Metrics Library.

Prerequisites: Configure your Azure Databricks cluster to use the monitoring library.



Note: The monitoring library streams Apache Spark level events and Spark Structured Streaming metrics from your jobs to Azure Monitor.

To send application metrics from Azure Databricks application code to Azure Monitor, follow these steps:

Step 1. Build the spark-listeners-loganalytics-1.0-SNAPSHOT.jar JAR file

Step 2: Create Dropwizard gauges or counters in your application code.

Reference:

<https://docs.microsoft.com/bs-latn-ba/azure/architecture/databricks-monitoring/application-logs>

QUESTION 2

You have an Azure subscription that contains an Azure Storage account.

You plan to implement changes to a data storage solution to meet regulatory and compliance standards.

Every day, Azure needs to identify and delete blobs that were NOT modified during the last 100 days.

Solution: You schedule an Azure Data Factory pipeline with a delete activity.

Does this meet the goal?

A. Yes

B. No

Correct Answer: A

You can use the Delete Activity in Azure Data Factory to delete files or folders from on-premises storage stores or cloud storage stores.

Azure Blob storage is supported.

Note: You can also apply an Azure Blob storage lifecycle policy.

Reference:

<https://docs.microsoft.com/en-us/azure/data-factory/delete-activity>

<https://docs.microsoft.com/en-us/azure/storage/blobs/storage-lifecycle-management-concepts?tabs=azure-portal>

QUESTION 3

A company has a SaaS solution that uses Azure SQL Database with elastic pools. The solution will have a dedicated database for each customer organization. Customer organizations have peak usage at different periods during the year.

Which two factors affect your costs when sizing the Azure SQL Database elastic pools? Each correct answer presents a complete solution.



NOTE: Each correct selection is worth one point.

- A. maximum data size
- B. number of databases
- C. eDTUs consumption
- D. number of read operations
- E. number of transactions

Correct Answer: AC

A: With the vCore purchase model, in the General Purpose tier, you are charged for Premium blob storage that you provision for your database or elastic pool. Storage can be configured between 5 GB and 4 TB with 1 GB increments. Storage is priced at GB/month.

C: In the DTU purchase model, elastic pools are available in basic, standard and premium service tiers. Each tier is distinguished primarily by its overall performance, which is measured in elastic Database Transaction Units (eDTUs).

References: <https://azure.microsoft.com/en-in/pricing/details/sql-database/elastic/>

QUESTION 4

SIMULATION Use the following login credentials as needed: Azure Username: xxxxx

Azure Password: xxxxx The following information is for technical support purposes only: Lab Instance: 10543936 You need to ensure that only the resources on a virtual network named VNET1 can access an Azure Storage account named storage10543936.



To complete this task, sign in to the Azure portal.

Correct Answer: See the below.

You can use Private Endpoints for your Azure Storage accounts to allow clients on a virtual network (VNet) to securely access data over a Private Link. Create your Private Endpoint

1.
On the upper-left side of the screen in the Azure portal, Storage > Storage account, and select your storage account storage10543936
2.
Select Networking.
3.
Select Add Private Endpoint.



4.

In Create Private Endpoint, enter or select this information: Virtual network: Select VNET1 from the resource group.

5.

Select OK.

6.

Select Review + create. You'll be taken to the Review + create page where Azure validates your configuration.

Reference: <https://docs.microsoft.com/en-us/azure/private-link/create-private-endpoint-storage-portal>

QUESTION 5

SIMULATION



Use the following login credentials as needed:

Azure Username: xxxxx Azure Password: xxxxx The following information is for technical support purposes only:

Lab Instance: 10277521

You plan to generate large amounts of real-time data that will be copied to Azure Blob storage.



You plan to create reports that will read the data from an Azure Cosmos DB database.

You need to create an Azure Stream Analytics job that will input the data from a blob storage named storage10277521 to the Cosmos DB database.

To complete this task, sign in to the Azure portal.

Correct Answer: See the below.

Explanation:

Step 1: Create a Stream Analytics job

1.

Sign in to the Azure portal.

2.

Select Create a resource in the upper left-hand corner of the Azure portal.

3.

Select Analytics > Stream Analytics job from the results list.

4.

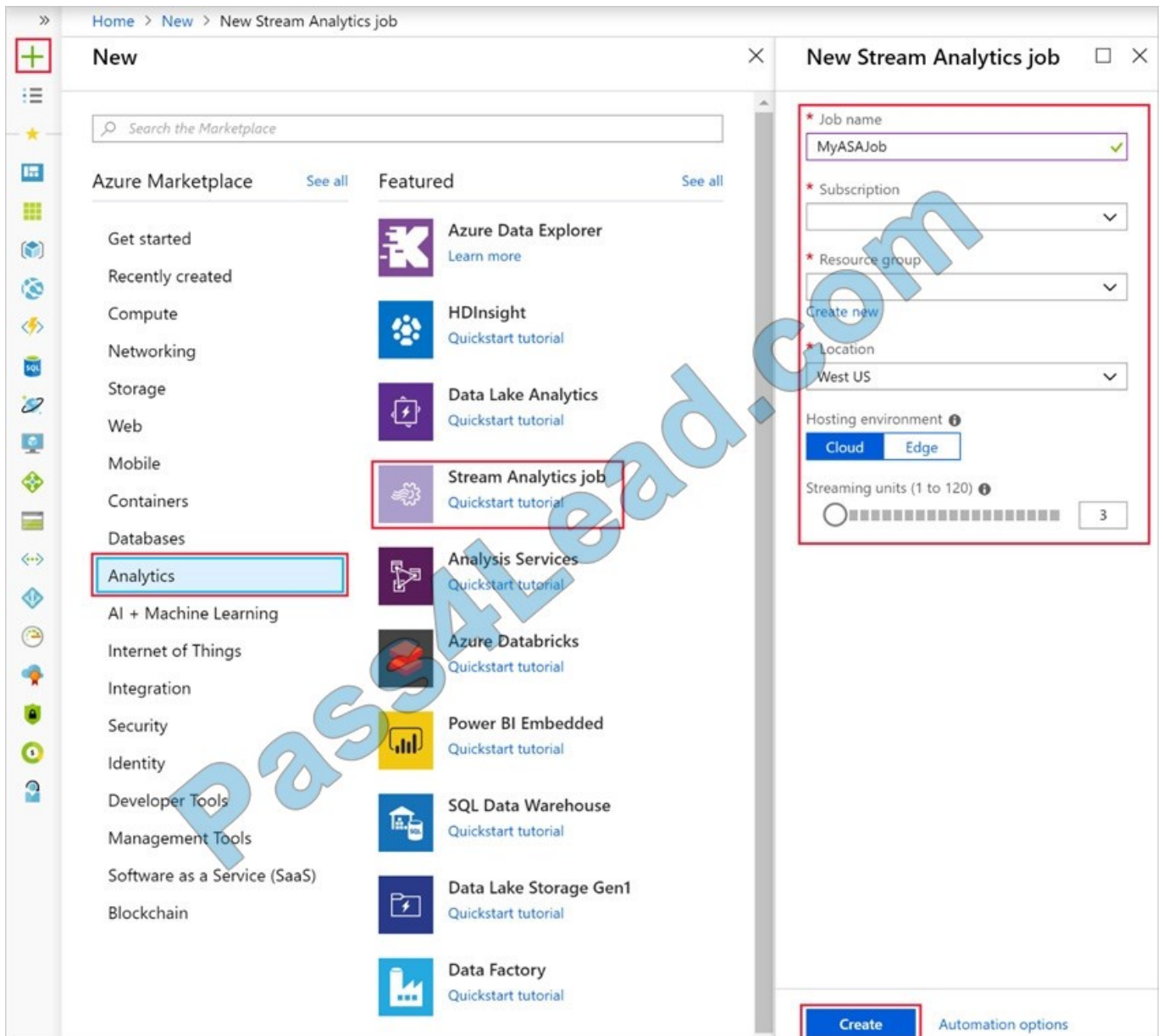
Fill out the Stream Analytics job page.

5.

Check the Pin to dashboard box to place your job on your dashboard and then select Create.

6.

You should see a Deployment in progress... notification displayed in the top right of your browser window. Step 2: Configure job input



1. Navigate to your Stream Analytics job.
2. Select Inputs > Add Stream input > Azure Blob storage
3. In the Azure Blob storage setting choose: storage10277521. Leave other options to default values and select Save to save the settings.



Home > MyASAJob - Inputs

MyASAJob - Inputs

Stream Analytics job

Search (Ctrl+ /)

- Overview
- Activity log
- Access control (IAM)
- Tags
- Diagnose and solve problems

Settings

- Locks

Job topology

- Inputs

+ Add stream input + Add reference input

- Event Hub
- IoT Hub
- Blob storage

Reference: <https://docs.microsoft.com/en-us/azure/stream-analytics/stream-analytics-quick-create-portal>

[DP-200 PDF Dumps](#)

[DP-200 Practice Test](#)

[DP-200 Study Guide](#)



To Read the [Whole Q&As](#), please purchase the [Complete Version](#) from [Our website](#).

Try our product !

100% Guaranteed Success

100% Money Back Guarantee

365 Days Free Update

Instant Download After Purchase

24x7 Customer Support

Average 99.9% Success Rate

More than 800,000 Satisfied Customers Worldwide

Multi-Platform capabilities - [Windows](#), [Mac](#), [Android](#), [iPhone](#), [iPod](#), [iPad](#), [Kindle](#)

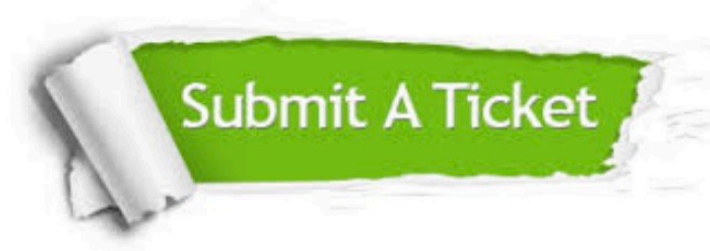
We provide exam PDF and VCE of Cisco, Microsoft, IBM, CompTIA, Oracle and other IT Certifications. You can view Vendor list of All Certification Exams offered:

<https://www.pass4lead.com/allproducts>

Need Help

Please provide as much detail as possible so we can best assist you.

To update a previously submitted ticket:



 <p>One Year Free Update Free update is available within One Year after your purchase. After One Year, you will get 50% discounts for updating. And we are proud to boast a 24/7 efficient Customer Support system via Email.</p>	 <p>Money Back Guarantee To ensure that you are spending on quality products, we provide 100% money back guarantee for 30 days from the date of purchase.</p>	 <p>Security & Privacy We respect customer privacy. We use McAfee's security service to provide you with utmost security for your personal information & peace of mind.</p>
---	---	--

Any charges made through this site will appear as Global Simulators Limited.

All trademarks are the property of their respective owners.

Copyright © pass4lead, All Rights Reserved.