

# FORTISANDBOX<sup>Q&As</sup>

FortiSandbox 2.0.3 Specialist

## Pass Fortinet FORTISANDBOX Exam with 100% Guarantee

Free Download Real Questions & Answers **PDF** and **VCE** file from:

<https://www.pass2lead.com/fortisandbox.html>

100% Passing Guarantee  
100% Money Back Assurance

Following Questions and Answers are all new published by Fortinet Official Exam Center

- ⚙️ **Instant Download** After Purchase
- ⚙️ **100% Money Back** Guarantee
- ⚙️ **365 Days** Free Update
- ⚙️ **800,000+** Satisfied Customers



**QUESTION 1**

When does a FortiSandbox categorize a file as suspicious?

- A. When the file is detected as known greyware
- B. When the file matches an antivirus signature that might detect false positives
- C. When the file matches a signature in the extended antivirus database
- D. When the file is not detected as a known malware, but it has some of the same behaviors as malware

Correct Answer: D

---

**QUESTION 2**

What is the minimum FortiAnalyzer firmware version that supports FortiSandbox device registration?

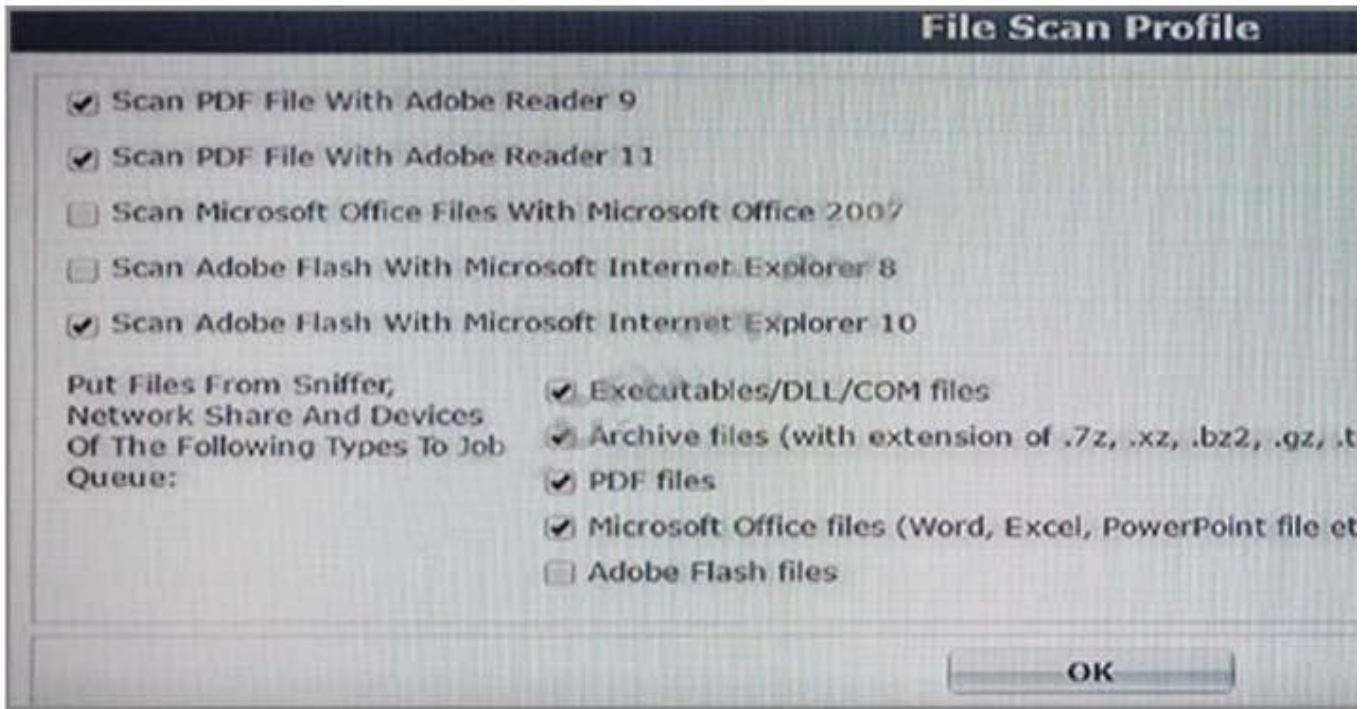
- A. 5.0.6
- B. 5.0.11
- C. 5.0.8
- D. 5.2.1

Correct Answer: C

---

**QUESTION 3**

Based on the exhibit, which are true? (Choose two.)



A. Depending on the version indicated in the PDF file, FortiSandbox will scan using only one PDF reader (either Adobe Reader 9 or Adobe Reader 11).

B. If there are no Internet Explorer 10 installations in your network, you can safely disable the scanning of Adobe Flash with Microsoft Internet Explorer 10.

C. FortiSandbox will scan all Flash applications using Internet Explorer 10. This does not guarantee safety for Internet Explorer 8.

D. You can safely disable the PDF scanning with Acrobat Reader 9 because PDF scanning with Acrobat Reader 11 is enabled.

Correct Answer: AC

#### QUESTION 4

Which threats can a FortiSandbox inspect when it is deployed in sniffer mode? (Choose three.)

- A. Suspicious website access
- B. Botnet connections
- C. Applications that use excessive bandwidth
- D. Known viruses
- E. Spam

Correct Answer: ABE

**QUESTION 5**

FortiGate is configured to send suspicious files to a FortiSandbox for in-line inspection. The administrator creates a new VDOM, and then generates some traffic so what the new VDOM sends a file to the FortiSandbox for the first time.

Which is true regarding this scenario?

- A. FortiSandbox will store the file, but not inspect it until the administrator manually authorizes the new VDOM.
- B. Before generating traffic, the administrator can push the VDOM configuration from the FortiGate to the FortiSandbox. Then when FortiSandbox receives the file, FortiSandbox will inspect the file.
- C. FortiSandbox can be pre-configured to automatically authorize the new VDOM and inspect the file.
- D. FortiSandbox will store the file, but not inspect it until the administrator manually adds the new VDOM to the FortiSandbox configuration.

Correct Answer: B

[FORTISANDBOX VCE Dumps](#)

[FORTISANDBOX Study Guide](#)

[FORTISANDBOX Exam Questions](#)