

H12-224^{Q&As}

HCIP-Routing & Switching (Fast Track) V2.0

Pass Huawei H12-224 Exam with 100% Guarantee

Free Download Real Questions & Answers **PDF** and **VCE** file from:

<https://www.pass2lead.com/h12-224.html>

100% Passing Guarantee
100% Money Back Assurance

Following Questions and Answers are all new published by Huawei
Official Exam Center

-  **Instant Download** After Purchase
-  **100% Money Back** Guarantee
-  **365 Days** Free Update
-  **800,000+** Satisfied Customers



QUESTION 1

Which are the two subfields in the port identifier of the uplink port on a non-root switch in RSTP?

- A. 1-byte port priority and 1-byte port number
- B. 1-byte port priority and 2-byte port number
- C. 2-byte port priority and 1-byte port number
- D. 2-byte port priority and 2-byte port number

Correct Answer: A

QUESTION 2

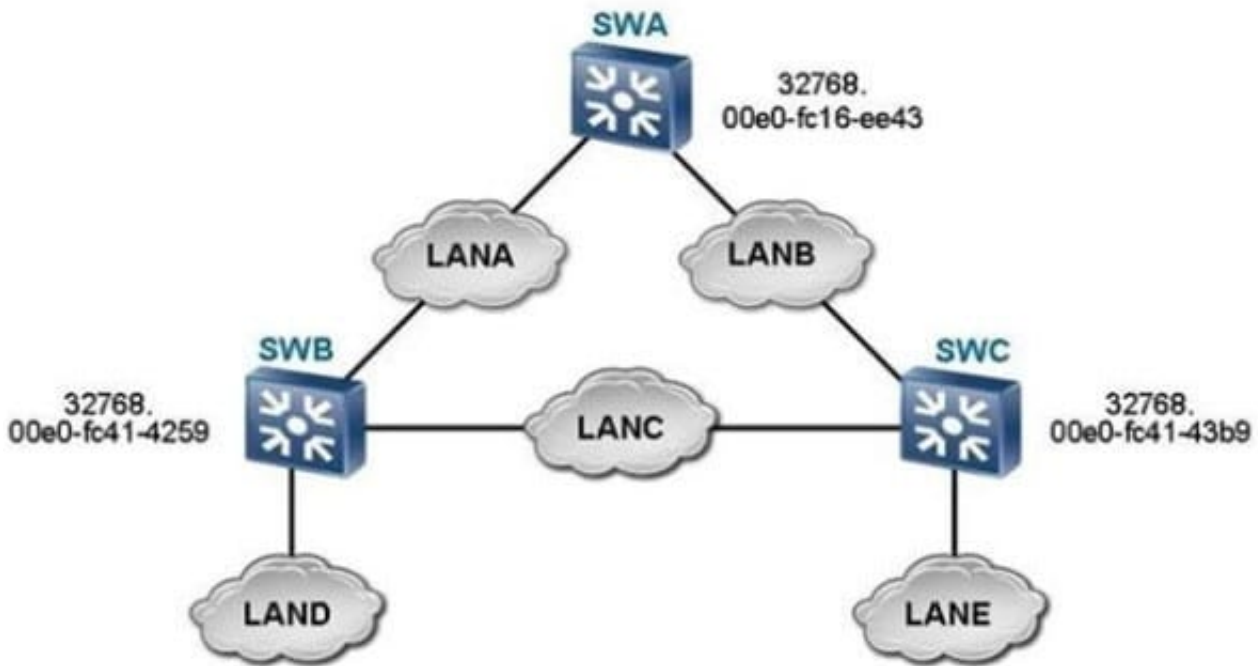
Policy-based routing and routing policy affect the forwarding of data packets in different ways: A routing policy mainly controls packet forwarding. According to the routing policy, packets can be forwarded with no need to use a routing table; policy-based routing mainly controls the importing, advertising, and receiving of routing information so as to affect the forwarding of data packets.

- A. True
- B. False

Correct Answer: B

QUESTION 3

Which of the following statements about the mVRRP backup group is false?



- A. Multiple service VRRP backup group can be bound to one mVRRP backup group.
- B. An mVRRP backup group can serve as a service VRRP backup group and thus be bound to another mVRRP backup group.
- C. One service VRRP backup group can be bound to only one mVRRP backup group.
- D. After multiple service VRRP backup groups are bound to an mVRRP backup group, the mVRRP backup group determines the status of all the service VRRP backup groups by sending VRRP packets. This can reduce the number of VRRP packets to be sent and improve the packet processing efficiency.

Correct Answer: B

QUESTION 4

Which of the following statements about link aggregation are true? (Choose three.)

- A. Link aggregation binds a group of physical interfaces together as a logical interface to increase the bandwidth and reliability.
- B. Link aggregation complies with IEEE 802.3az.
- C. The logical link formed by bundling multiple physical links together is called a link aggregation group (LAG) or a trunk.
- D. Active and inactive interfaces exist in link aggregation. Active interfaces forward data, whereas inactive interfaces do not.

Correct Answer: ACD

QUESTION 5

Which of the following statements regarding preemption in static LACP mode are true? (Choose all that apply.)

- A. Preemption in static LACP mode is enabled by default.
- B. When a high-priority interface switches to the inactive interface due to a fault and then is restored, if preemption is enabled, the restored high-priority interface becomes the active interface after a delay. If preemption is disabled, the interface cannot become the active interface.
- C. To prevent unstable transmission due to frequent link status changes, can set a preemption delay.
- D. If the preemption delays at both ends are different, the larger preemption delay is used.

Correct Answer: BCD

[Latest H12-224 Dumps](#)

[H12-224 PDF Dumps](#)

[H12-224 Exam Questions](#)