

H12-261^{Q&As}

HCIE-Routing & Switching (Written) V3.0

Pass Huawei H12-261 Exam with 100% Guarantee

Free Download Real Questions & Answers **PDF** and **VCE** file from:

<https://www.pass2lead.com/h12-261.html>

100% Passing Guarantee
100% Money Back Assurance

Following Questions and Answers are all new published by Huawei
Official Exam Center

-  **Instant Download** After Purchase
-  **100% Money Back** Guarantee
-  **365 Days** Free Update
-  **800,000+** Satisfied Customers



QUESTION 1

About FTP Protocol Which of the following descriptions is correct

- A. In the mode, the client completes the control and data FTP Passive, the TCP user\\'s initialization
- B. In the mode, the server is connected to the command FTP Active, "PORT is used to tell the client which port it wants to send data to.
- C. FTP TCP always uses a remote control information and data information
- D. FTP TCP 20, ICP 21 Always use the far port to establish a data session. Use the port to establish control.
- E. Session E.FTP TCP 21, TCP 20 Always use the far port to establish a data session Use the port to establish a control session

Correct Answer: A

QUESTION 2

When DLDAP detects a unidirectional fiber link, Huawei devices perform the following operations by default: The DLDAP state machine changes to the Disable state; a trap is generated; the interface is automatically blocked.

- A. TRUE
- B. FALSE

Correct Answer: A

QUESTION 3

Which of the following statements regarding VRRP is true?

- A. Both VRRPv2 and VRRPv3 support authentication
- B. VRRPv3 does not support authentication, whereas VRRPv2 supports authentication
- C. The VRRP priority of the master IP address owner is 255. Therefore, the priority can be a value in the range from 0 to 254.
- D. VRRPv2 only applies to an IPv4 network, and VRRPv3 applies only to an IPv6 network

Correct Answer: BCD

Reference: <https://support.huawei.com/enterprise/en/doc/EDOC1000178318/6e22bde4/vrrpv2-and-vrrpv3advertisement-packets>

QUESTION 4

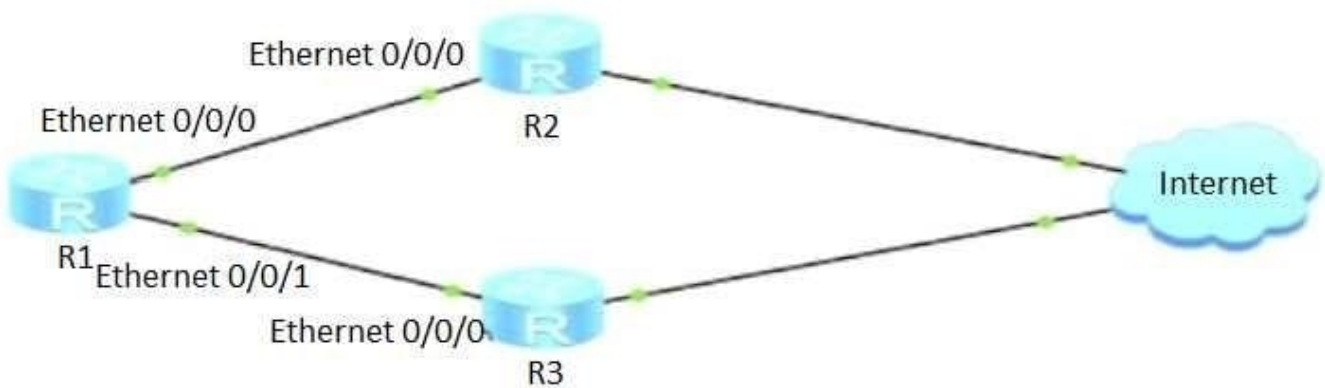
Which of the following is optimal to build a two-network loop?

- A. Stacking Road aggregation + chain
- B. TRILL+MSTP
- C. Stacking + MSTP
- D. Link Aggregation + MSTP

Correct Answer: A

QUESTION 5

As shown in the following figure, R1 can connect to the Internet through R2 or R3. EBGP connections are set up between R1 and R2 and between R1 and R3. R2 and R3 reside in the same AS and advertise default routes using BGP. Which of the following methods can be used to enable traffic from R1 to the Internet to be preferentially forwarded by R2?



- A. On R2, set the Local_Pref value to 150 in the egress direction of R1
- B. On R1, set the MED attribute value to 150 in the ingress direction of R3
- C. On R1, set the Local_Pref attribute value to 150 in the ingress direction of R2
- D. On R2, set the MED attribute value to 150 in the egress direction of R1

Correct Answer: C