

H12-831^{Q&As}

HCIP-Datacom-Advanced Routing & Switching Technology V1.0

Pass Huawei H12-831 Exam with 100% Guarantee

Free Download Real Questions & Answers **PDF** and **VCE** file from:

<https://www.pass2lead.com/h12-831.html>

100% Passing Guarantee
100% Money Back Assurance

Following Questions and Answers are all new published by Huawei
Official Exam Center

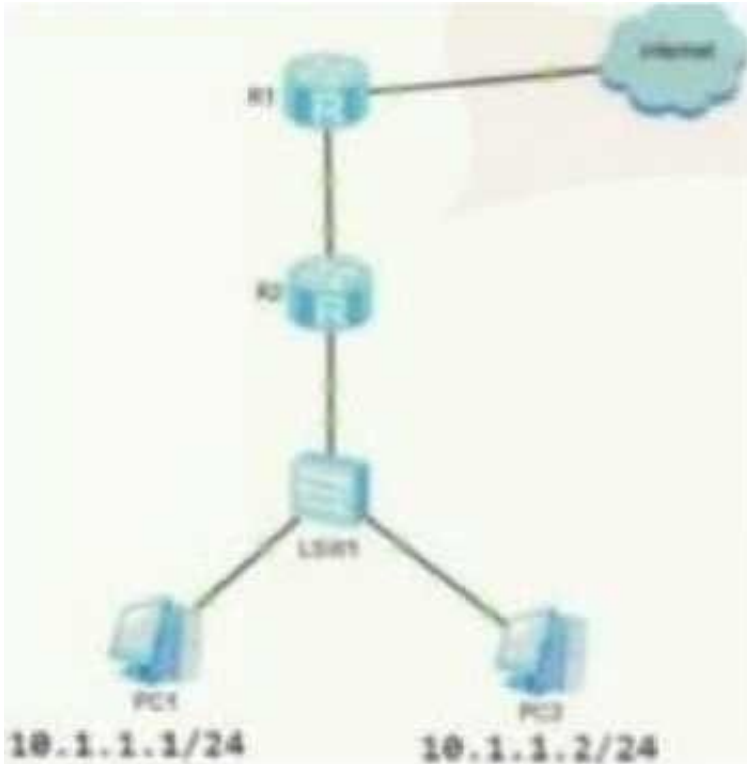
-  **Instant Download** After Purchase
-  **100% Money Back** Guarantee
-  **365 Days** Free Update
-  **800,000+** Satisfied Customers



QUESTION 1

As shown in the figure, configure a backhaul summary route 10.0.0.0/24 on the border route RT1. next hop to RT2. At the same time, the default route to the external network is configured. At this point, a routing black hole will appear. The following is about routing.

Is the black hole statement correct? (multiple choice)



- A. Configuring black hole routing can solve the routing black hole problem
- B. Routing black hole has no impact on the network and can be ignored
- C. Precise routing \$ can always avoid routing black holes
- D. If the terminal in the network sends data packets to the network segment that does not appear on the internal network, a loop will occur

Correct Answer: ACD

QUESTION 2

Regarding multi-instance CE (Multi-VPN-Instance CE, MCE), which of the following descriptions is wrong?

- A. existMCEdevice needs to be differentVPNCreate their own routing table and bind to the correct interface
- B. connected to the sameMCEbut not oneVPNInstance users cannot access each other

C. haveMCEfunctional devices can be found inBGPIMPLS IP VPNAccess to multiple applicationsVPNExample, reduce the investment of user network equipment

D. MCEandPEThere must be multiple physical links betweenVPINIIsolation between instances

Correct Answer: D

QUESTION 3

Basic QinQ can choose the outer tag encapsulation method according to the business type.

A. True

B. False

Correct Answer: B

QUESTION 4

When deploying MPLS/BGP IP VPN, which of the following descriptions is wrong about using BGP to exchange routing information between PEs and CEs?

A. existCEIn the case of multi-homing, enableBGP ASThe number substitution function may cause routing loops that can be passed throughBGP SoDpreventVPNIntra-site routing loops

B. whenPEandCEbetweenBGPWhen exchanging routing information, if twoVPNThe autonomous system the site is in uses the same privateASnumber, can be passed throughASThe number replacement function is to use any specifiedASreplace the received private network route with theASnumber to preventASRoutes are discarded due to duplicate numbers

C. existHubandSpokesecene, whenHub-CEandHub-PEuselGPTTimeSpoke-PEandSpake- CECannot makeEBGP

D. whenPEandCEbetweenBGPWhen exchanging routing information, you do not need toPEPerform private network route import on theBGPoperation

Correct Answer: B

QUESTION 5

LDP messages are exchanged between LSRs running the LDP protocol. LDP messages can be divided into four types according to their functions. Which of the following is not a message type of LDP?

A. discovery message

B. announcement message

C. conversation message

D. label exchange message

Correct Answer: D

[H12-831 PDF Dumps](#)

[H12-831 VCE Dumps](#)

[H12-831 Practice Test](#)