

# HP0-Y51<sup>Q&As</sup>

Building HP SDN and FlexNetwork Solutions

**Pass HP HP0-Y51 Exam with 100% Guarantee**

Free Download Real Questions & Answers **PDF** and **VCE** file from:

<https://www.pass2lead.com/hp0-y51.html>

100% Passing Guarantee  
100% Money Back Assurance

Following Questions and Answers are all new published by HP Official Exam Center

- ⚙️ **Instant Download** After Purchase
- ⚙️ **100% Money Back** Guarantee
- ⚙️ **365 Days** Free Update
- ⚙️ **800,000+** Satisfied Customers



### QUESTION 1

A company has an HP Network Protector SDN Application with these characteristics:

The Network Protector whitelist for all user VLANs includes site1.example.com. The blacklist for all user VLANs includes site1.example.com with a time range

of

9:00 to 17:00.

The Rep DV database includes site1 example.com with a reputation score of 90.

An endpoint attempts to browse to site1.example.com. How does Network Protector classify DNS requests for site1.example.com?

- A. It always flags the requests as threats.
- B. It flags the requests as threats between 17:00 and 9:00.
- C. It flags the requests as threats between 9:00 to 17:00.
- D. It never flags the requests as threats.

Correct Answer: D

---

### QUESTION 2

An HP Unified Wired-Wireless controller controls an AP. The AP implements centralized forwarding. It supports 802.11n clients that implement Wi-Fi Multimedia (WMM) or 802.11 e. Some of the clients are sending traffic in high priority WMM queues.

How does the AP help to ensure that this traffic is prioritized in the wired LAN?

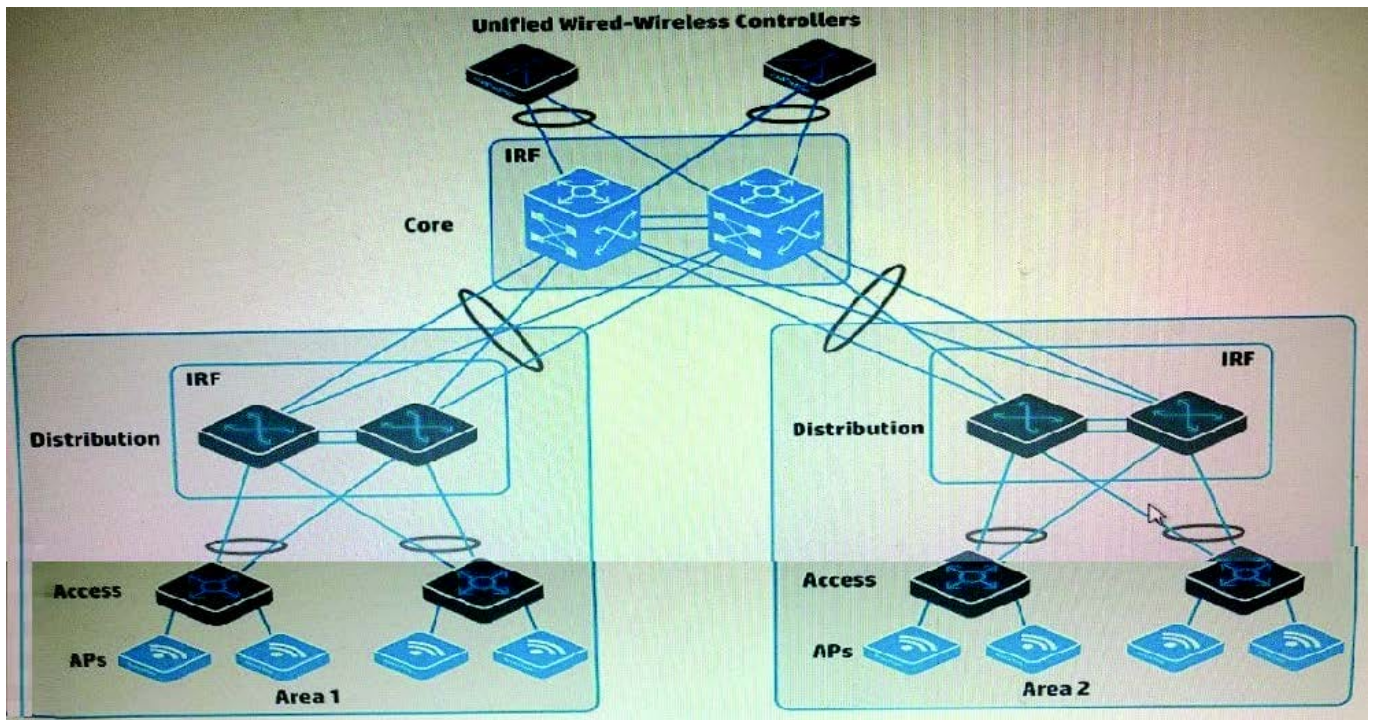
- A. It maps 802.11 values from wireless traffic to DiffServ Code Points (DSCP) in packets tunneled to the controller.
- B. It implements 802.11n fair scheduling on the port that connects to the switch.
- C. It maps 802.1p values from wireless traffic to 802.11 e values in packets forwarded into the LAN.
- D. It implements Spectralink and uses Spectralink-to-WMM compliance mode.

Correct Answer: A

---

**QUESTION 3**

Refer to the exhibit.



A company has HP APs that are managed by the two Unified Wired-Wireless controllers. Wireless users use Wi-Fi Protected access (WPA2) and authenticate with 802.1X to HP Access Manager (UAM). The SSID uses centralized forwarding. Users need to be able to roam seamlessly from area 1 to area 2.

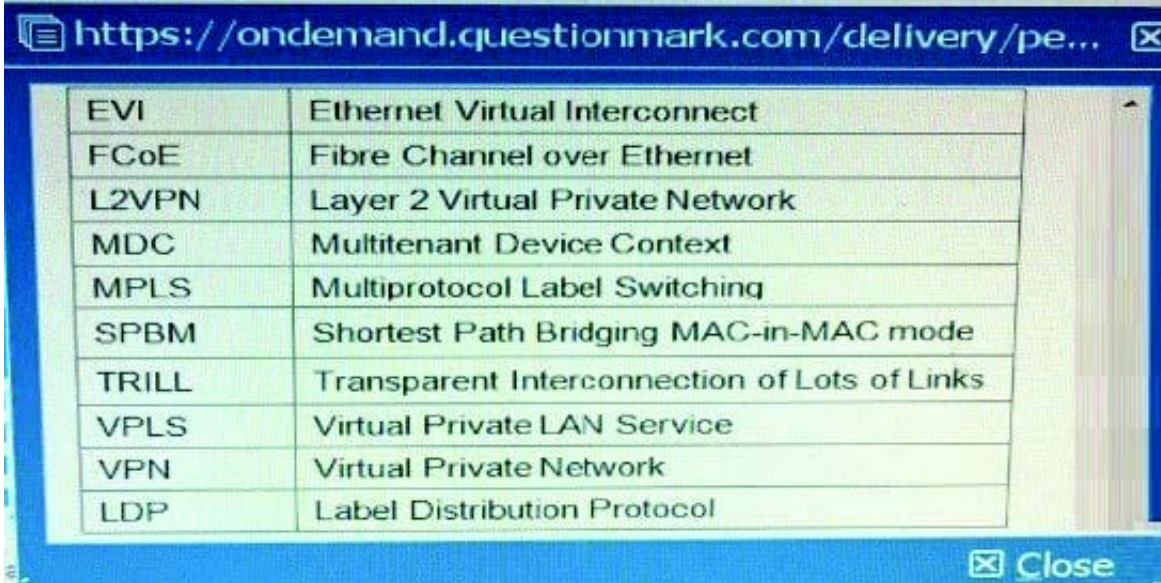
Which step helps to meet these needs?

- A. Configure local forwarding for the SSID on both controllers.
- B. Configure controller 1 as a backup controller for APs in area; configure controller 2 as a backup controller for APs in area1.
- C. Change the security mode to preshared key (PSK) and enable opportunistic key change (also called "fast roaming").
- D. Set up enable a roam that includes both controllers.

Correct Answer: A

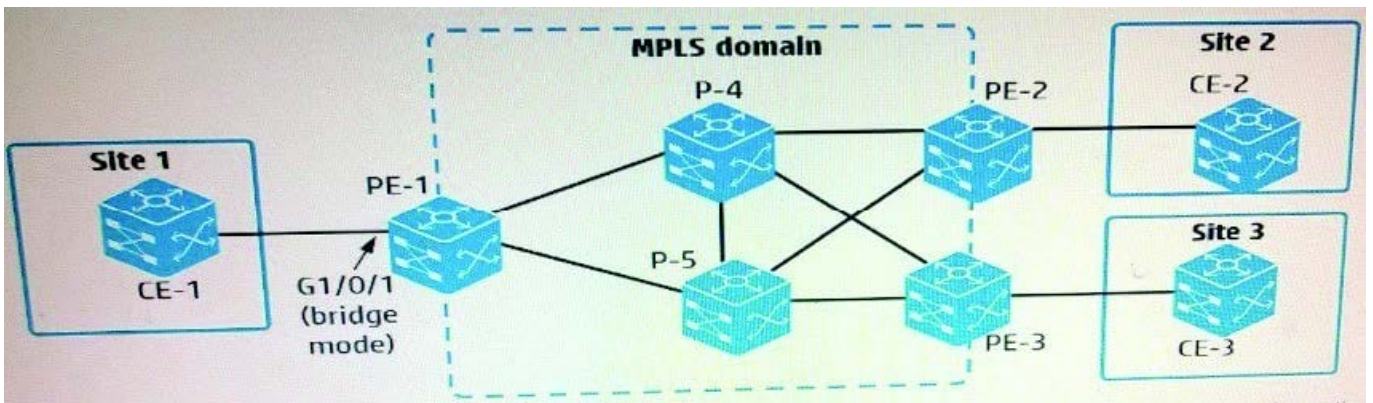
**QUESTION 4**

Table of acronyms



EVI	Ethernet Virtual Interconnect
FCoE	Fibre Channel over Ethernet
L2VPN	Layer 2 Virtual Private Network
MDC	Multitenant Device Context
MPLS	Multiprotocol Label Switching
SPBM	Shortest Path Bridging MAC-in-MAC mode
TRILL	Transparent Interconnection of Lots of Links
VPLS	Virtual Private LAN Service
VPN	Virtual Private Network
LDP	Label Distribution Protocol

Refer to the exhibit.



An administrator is setting up an MPLS and L2VPN virtual circuit (VC) between customer Site 1 and Site 2. The administrator is creating a global cross-connect group, which uses LDP signaling, on PE-1. Which two elements are required to do this?

- A. An AC connection (specifies a service instance on g1/0/1) and a peer (PE-2)
- B. A peer (PE-2) and a VPN instance (associated with g1/0/1)
- C. A peer (PE-2) and a VLAN ID (access VLAN or. g1/0/1)
- D. An AC connection (specifies a service instance on g1/0/1) and a VPN instance (associated with g1/0/1)

Correct Answer: CD

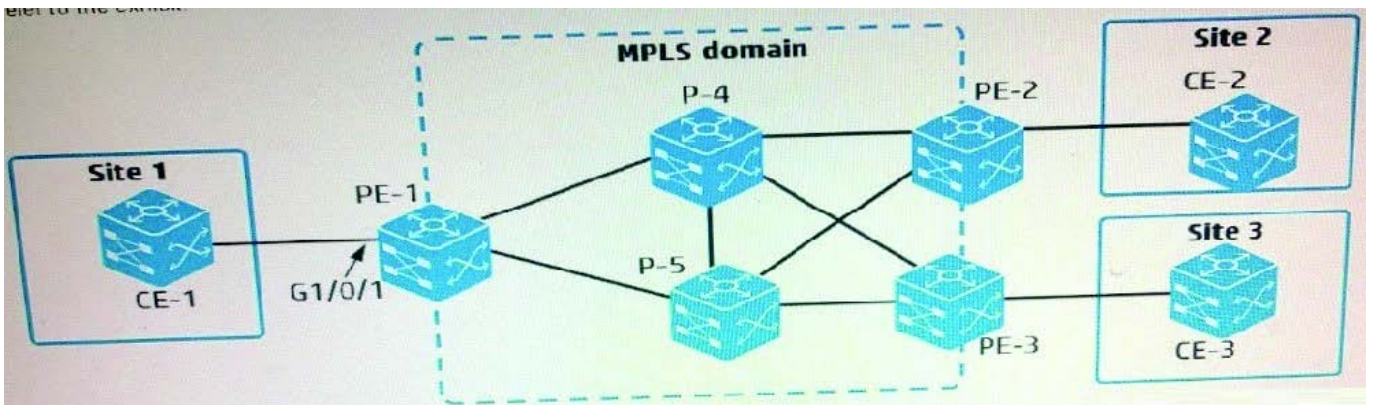
**QUESTION 5**

Table of Acronyms Refer to the exhibit.

<https://ondemand.questionmark.com/delivery/perce>

EVI	Ethernet Virtual Interconnect
FCoE	Fibre Channel over Ethernet
L2VPN	Layer 2 Virtual Private Network
MDC	Multitenant Device Context
MPLS	Multiprotocol Label Switching
SPBM	Shortest Path Bridging MAC-in-MAC mode
TRILL	Transparent Interconnection of Lots of Links
VPLS	Virtual Private LAN Service
VPN	Virtual Private Network
LDP	Label Distribution Protocol

Close



An administrator is planning an MPLS and VPLS Martini to connect customer sites 1, 2, and 3. How many pseudo must the administrator define?

- A. Two-two on PE-1, with one connected to PE-2 and PE-3
- B. Three-one each on PE-1, PE-2, and PE-3
- C. Four-two on PE-1, one on PE-2 m and one on PE-3
- D. Six-two each on PE-1, PE-2, and PE-3

Correct Answer: C

[Latest HP0-Y51 Dumps](#)

[HP0-Y51 Exam Questions](#)

[HP0-Y51 Braindumps](#)