

HP0-Y51^{Q&As}

Building HP SDN and FlexNetwork Solutions

Pass HP HP0-Y51 Exam with 100% Guarantee

Free Download Real Questions & Answers **PDF** and **VCE** file from:

<https://www.pass2lead.com/hp0-y51.html>

100% Passing Guarantee
100% Money Back Assurance

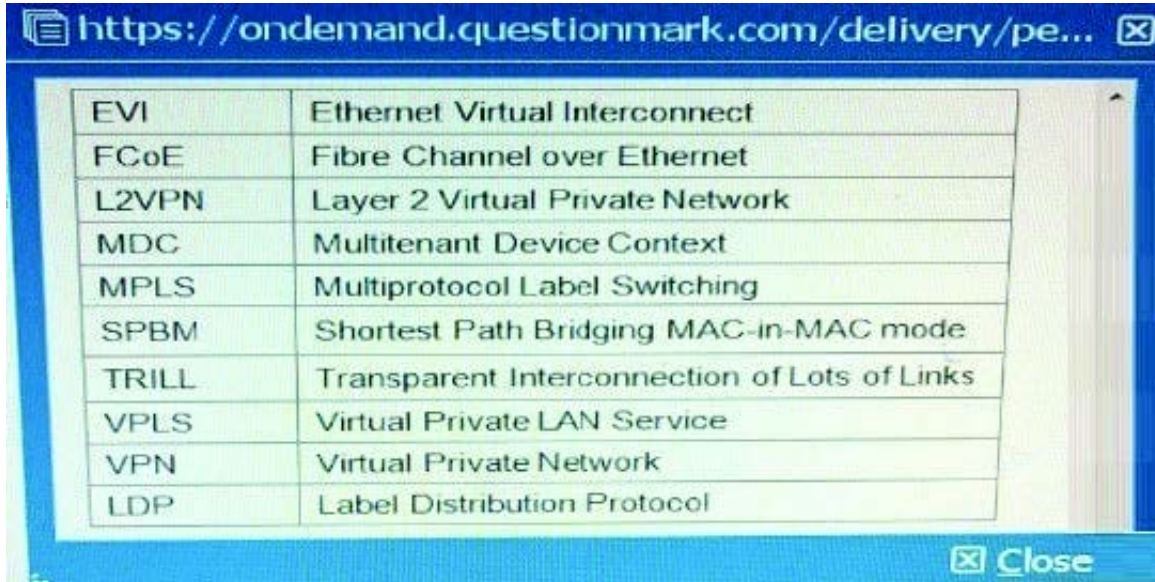
Following Questions and Answers are all new published by HP Official Exam Center

- ⚙️ **Instant Download** After Purchase
- ⚙️ **100% Money Back** Guarantee
- ⚙️ **365 Days** Free Update
- ⚙️ **800,000+** Satisfied Customers



QUESTION 1

Table of Acronyms



The screenshot shows a web browser window with the URL <https://ondemand.questionmark.com/delivery/pe...>. The main content is a table with two columns: the acronym and its full name. The table is as follows:

EVI	Ethernet Virtual Interconnect
FCoE	Fibre Channel over Ethernet
L2VPN	Layer 2 Virtual Private Network
MDC	Multitenant Device Context
MPLS	Multiprotocol Label Switching
SPBM	Shortest Path Bridging MAC-in-MAC mode
TRILL	Transparent Interconnection of Lots of Links
VPLS	Virtual Private LAN Service
VPN	Virtual Private Network
LDP	Label Distribution Protocol

At the bottom right of the table area, there is a 'Close' button.

A company is deploying an HP VAN SDN Controller solution, which is installed with the HP Network Protector application. The administrator configures the solution to control HP Provision switches and must choose the OpenFlow instance failover mode. Which customer requirement should cause the administrator to choose standalone mode?

- A. The solution must work with a single VAN SDN Controller rather than a team of controllers.
- B. The company requires N+2 redundancy for the VAN SDN Controller functionality and the malware protection.
- C. OpenFlow must be confined to the guest VLAN, which has the devices against which Network Protector guards the network
- D. It is vital to protect user connectivity if the controller fails, even if the network is temporarily less protected against malware

Correct Answer: A

QUESTION 2

A company has an HP Network Protector SDN Application with these characteristics:

The Network Protector whitelist for all user VLANs includes site1.example.com. The blacklist for all user VLANs includes site1.example.com with a time range

of

9:00 to 17:00.

The Rep DV database includes site1 example.com with a reputation score of 90.

An endpoint attempts to browse to site1.example.com. How does Network Protector classify DNS requests for site1.example.com?

- A. It always flags the requests as threats.
- B. It flags the requests as threats between 17:00 and 9:00.
- C. It flags the requests as threats between 9:00 to 17:00.
- D. It never flags the requests as threats.

Correct Answer: D

QUESTION 3

A Company has APs that are deployed relatively close together. These APs are controlled by an HP Unified Wired-Wireless controller. Which setting helps to prevent the APs from interfering with each other while also letting the APs extend their coverage area if one of the AP fails?

- A. Channel reuse
- B. Dynamic frequency selection (DFS)
- C. Transmit power control (TPC)
- D. Fair scheduling

Correct Answer: A

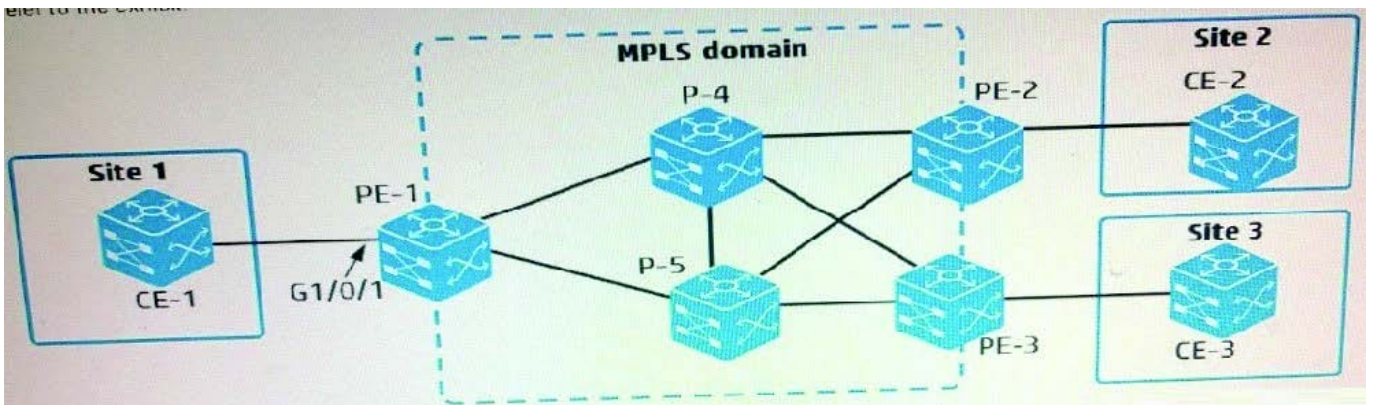
QUESTION 4

Table of Acronyms Refer to the exhibit.

<https://ondemand.questionmark.com/delivery/perce>

EVI	Ethernet Virtual Interconnect
FCoE	Fibre Channel over Ethernet
L2VPN	Layer 2 Virtual Private Network
MDC	Multitenant Device Context
MPLS	Multiprotocol Label Switching
SPBM	Shortest Path Bridging MAC-in-MAC mode
TRILL	Transparent Interconnection of Lots of Links
VPLS	Virtual Private LAN Service
VPN	Virtual Private Network
LDP	Label Distribution Protocol

Close



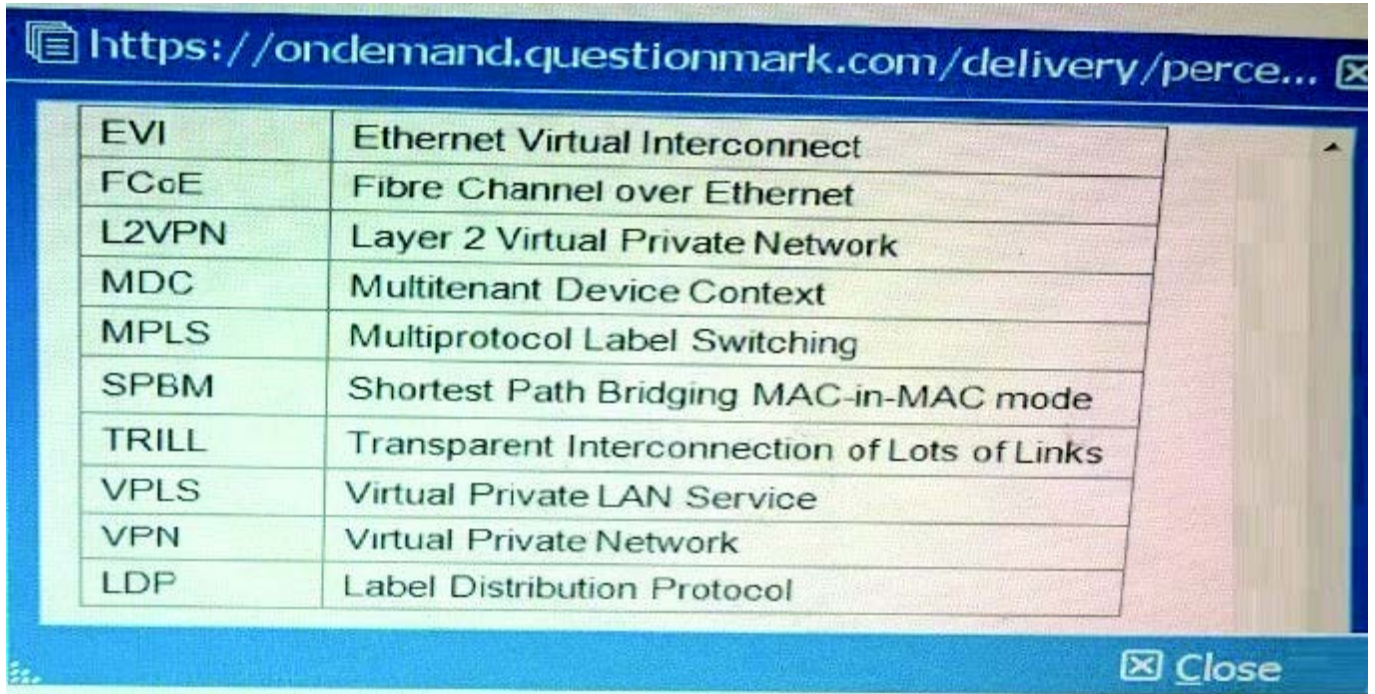
An administrator is planning an MPLS and VPLS Martini to connect customer sites 1, 2, and 3. How many pseudo must the administrator define?

- A. Two-two on PE-1, with one connected to PE-2 and PE-3
- B. Three-one each on PE-1, PE-2, and PE-3
- C. Four-two on PE-1, one on PE-2 m and one on PE-3
- D. Six-two each on PE-1, PE-2, and PE-3

Correct Answer: C

QUESTION 5

Table of Acronyms Refer to the exhibit.



The image shows a screenshot of a web browser window. The address bar displays the URL <https://ondemand.questionmark.com/delivery/perce...>. The main content area contains a table with two columns: the first column lists acronyms and the second column lists their corresponding full names. The table is as follows:

EVI	Ethernet Virtual Interconnect
FCoE	Fibre Channel over Ethernet
L2VPN	Layer 2 Virtual Private Network
MDC	Multitenant Device Context
MPLS	Multiprotocol Label Switching
SPBM	Shortest Path Bridging MAC-in-MAC mode
TRILL	Transparent Interconnection of Lots of Links
VPLS	Virtual Private LAN Service
VPN	Virtual Private Network
LDP	Label Distribution Protocol

At the bottom right of the browser window, there is a "Close" button with a small icon to its left.

```
#Device1 partial running-config
evi site-id 1
interface GigabitEthernet1/0/1
  port access vlan 101
  evi enable
interface vlan-interface101
  ip address 10.0.0.2 255.255.255.0
interface tunnel 1
  source 10.0.0.2
  evi network-id 1
  evi neighbor-discovery server enable
  evi neighbor-discovery client enable 10.0.2.2

#Device2 partial running-config
evi site-id 2
interface GigabitEthernet1/0/1
  port access vlan 102
  evi enable
interface vlan-interface102
  ip address 10.0.2.2 255.255.255.0
interface tunnel 1
  source 10.0.2.2
  evi network-id 2
  evi neighbor-discovery server enable
  evi neighbor-discovery client enable 10.0.0.2

#Device3 partial running-config
evi site-id 3
interface GigabitEthernet1/0/1
  port access vlan 103
  evi enable
interface vlan-interface103
  ip address 10.0.3.2 255.255.255.0
interface tunnel 1
  source 10.0.3.2
  evi network-id 3
  evi neighbor-discovery client enable 10.0.0.2
  evi neighbor-discovery client enable 10.0.2.2
```

A company has three data centers, each with a connection to a service provider network. The administrator has configured the settings shown in the exhibit, but the EVI links are not coming up. What should the administrator do to correct the problem?

- A. Change the EVI site ID on each device to match.
- B. Add destination IP addresses to the tunnel interfaces.
- C. Enable 1S-1S on the VLAN interfaces that connect to the service provider.
- D. Change the EVI network ID on each device to match.

Correct Answer: C

[Latest HP0-Y51 Dumps](#)

[HP0-Y51 Exam Questions](#)

[HP0-Y51 Braindumps](#)