

HP2-Z31^{Q&As}

Creating HP Software-defined Networks

Pass HP HP2-Z31 Exam with 100% Guarantee

Free Download Real Questions & Answers **PDF** and **VCE** file from:

<https://www.pass2lead.com/hp2-z31.html>

100% Passing Guarantee
100% Money Back Assurance

Following Questions and Answers are all new published by HP Official Exam Center

- ⚙️ **Instant Download** After Purchase
- ⚙️ **100% Money Back** Guarantee
- ⚙️ **365 Days** Free Update
- ⚙️ **800,000+** Satisfied Customers



QUESTION 1

Which statement best describes software-defined networking (SDN)?

- A. SDN allows software to leverage the network infrastructure, enabling a centralized and policy-based approach to network provisioning and traffic forwarding.
- B. SDN allows administrators to share software, policies, templates, and applications between multiple virtual machines that are running on the same network.
- C. SDN is another name for OpenFlow, a protocol that lets switches handle traffic with OpenFlow tables rather than MAC forwarding tables and routing tables.
- D. SDN lets IT developers manage physical infrastructure devices directly without pre-defined templates or intermediary devices.

Correct Answer: A

The HP VAN SDN Controller is a Java-based OpenFlow controller enabling SDN solutions such as network controllers for the data center, public cloud, private cloud, and campus edge networks. This includes providing an open platform for developing experimental and special- purpose network control protocols using a built-in OpenFlow controller. The HP VAN SDN Controller is a platform for developing SDN applications and deploying SDN applications. The controller can be characterized as providing a Base Control Platform, a Distributed Platform for High-Availability and Scalability, and an Extensible Platform.

Reference: HP VAN SDN Controller Administrator Guide

QUESTION 2

What are the OpenFlow flow entry timeout values? (Select two.)

- A. Flow timeout
- B. Idle timeout
- C. Soft timeout
- D. Controller timeout
- E. Hard timeout

Correct Answer: BE

OpenFlow flow entry timers include the idle timeout, the hard timeout, and the purge flow timer.

Reference: Understanding OpenFlow Flow Entry Timers on Devices Running Junos OS http://www.juniper.net/techpubs/en_US/junos13.3/topics/concept/junos-sdn-openflow-flow-entry-timersoverview.html

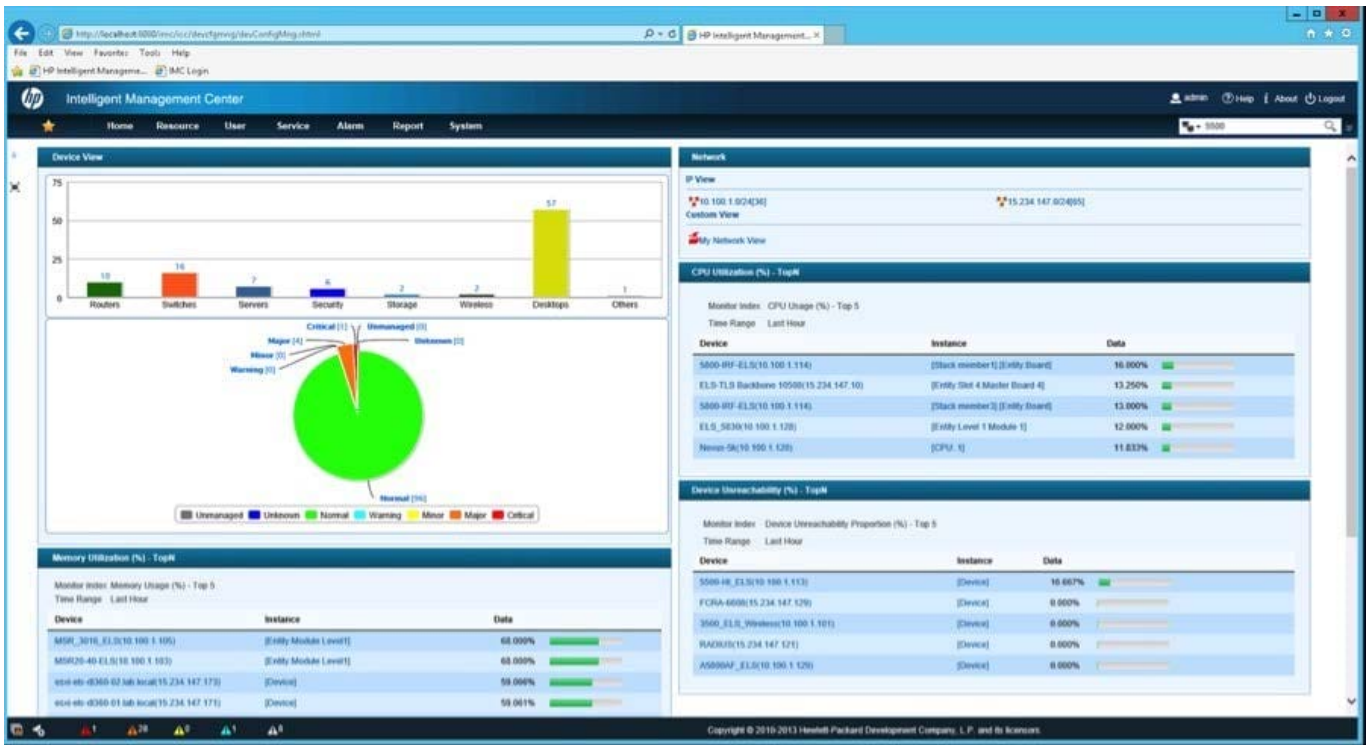
QUESTION 3

Which HP IMC SDN Manager functionality provides a logical overview of the OpenFlow network?

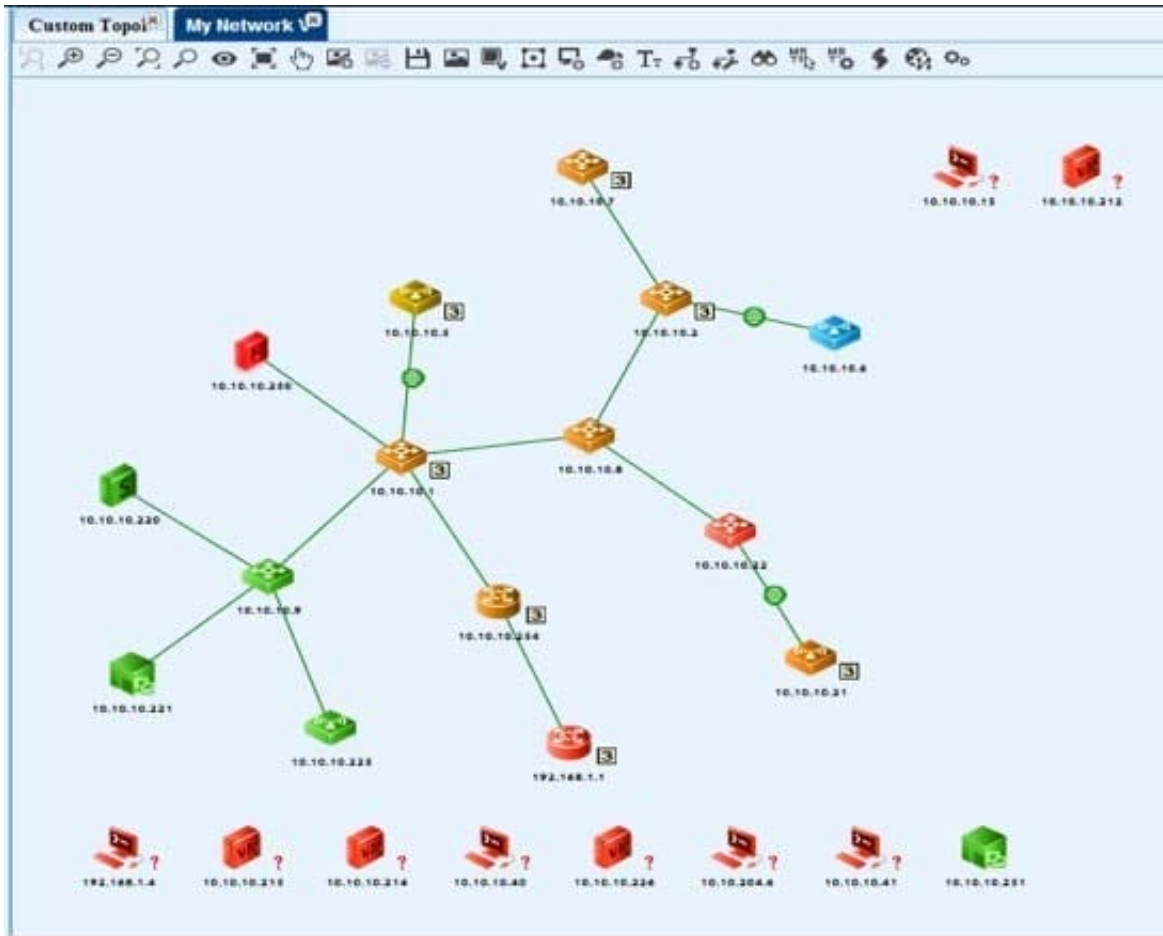
- A. SDN Manager reports
- B. SDN Manager dashboard
- C. SDN Manager flow entry management
- D. SDN Manager OpenFlow topology

Correct Answer: B

HP IMC Dashboard figure:



My Network view (within SDN Manager Dashboard):



Reference: Review: HP Intelligent Management Center (IMC)

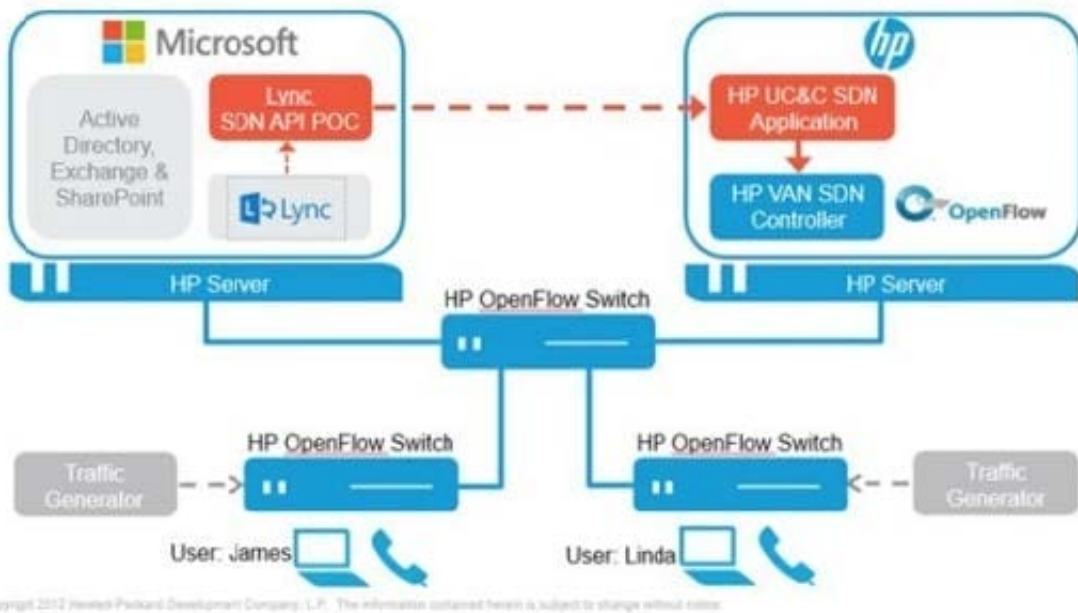
QUESTION 4

What is an advantage of using the HP Network Optimizer SDN application with UCandC applications rather than just the SDN applications?

- A. It enables the QoS trust boundary to be shifted to the switch.
- B. It enables the UCandC Client to select the UCandC application server optimally located for them.
- C. It removes the need for queuing.
- D. It enables QoS verification for BYOD.

Correct Answer: D

HP UC&C SDN Application with Microsoft Lync SDN API POC Demo



The first capability that's implemented is the ability of the Lync server (or any communications server, potentially) to dynamically provide to the network controller the IP addresses/ports of the paired endpoints of a real time flow. This enables the network to mark, without deep packet inspection, those flows with a CoS/QoS tag that will give them the proper treatment in the network. This becomes a positive identification of "authorized" real-time flows; any device/flow trying to use that tagging that is not "authorized" through the API can automatically be re-tagged to a best effort service class.

This technique has a number of critical advantages over current techniques. When compared to the typical VLAN, it enables positive tagging of a variety of devices, including BYOD and potentially other systems that might have multiple traffic types (e.g., a PC running a soft client or a tablet).

In addition, when compared to deep packet inspection at each access element, it reduces cost as well as eliminating the errors and complexity that encryption of the packet stream can introduce.

Reference: HP and Microsoft Demo OpenFlow-Lync Applications-optimized Network

QUESTION 5

An administrator has created a whitelist entry for the website www.piratesmustdie.com. This has been applied to the test group, which contains VLANs 10-20. VLANs 1 - 20 are configured on switches in the network. A time range has been applied to the whitelist for the time period 9:00am to 5:00pm.

Which users would be able to access the website?

- A. The website is blocked for all users because it has a reputation score of 80 in the RepDV database
- B. Users in VLAN 10 will be able to access the website at 10:00am.
- C. All users will be able to access the website at 4:00pm.

D. Users in VLAN 5 will be able to access the website at 11:00pm.

Correct Answer: B

[HP2-Z31 PDF Dumps](#)

[HP2-Z31 VCE Dumps](#)

[HP2-Z31 Exam Questions](#)