

# HP2-Z37<sup>Q&As</sup>

Fast Track - Applying HP FlexNetwork Fundamentals

## Pass HP HP2-Z37 Exam with 100% Guarantee

Free Download Real Questions & Answers **PDF** and **VCE** file from:

<https://www.pass2lead.com/hp2-z37.html>

100% Passing Guarantee  
100% Money Back Assurance

Following Questions and Answers are all new published by HP Official Exam Center

- ⚙️ **Instant Download** After Purchase
- ⚙️ **100% Money Back** Guarantee
- ⚙️ **365 Days** Free Update
- ⚙️ **800,000+** Satisfied Customers



**QUESTION 1**

Refer to the Exhibit.



A network administrator needs to configure DHCP on SwitchA. Assume that SwitchA is an HPE Comware switch and is using the default settings for DHCP. The administrator configures the following information:

```
[SwitchA] dhcp relay server-group 1 ip 10.1.1.1  
[SwitchA] interface vlan-interface 1  
[SwitchA-Vlan-interface1] dhcp select relay  
[SwitchA-Vlan-interface1] dhcp relay server-select 1  
[SwitchA-Vlan-interface1] quit
```

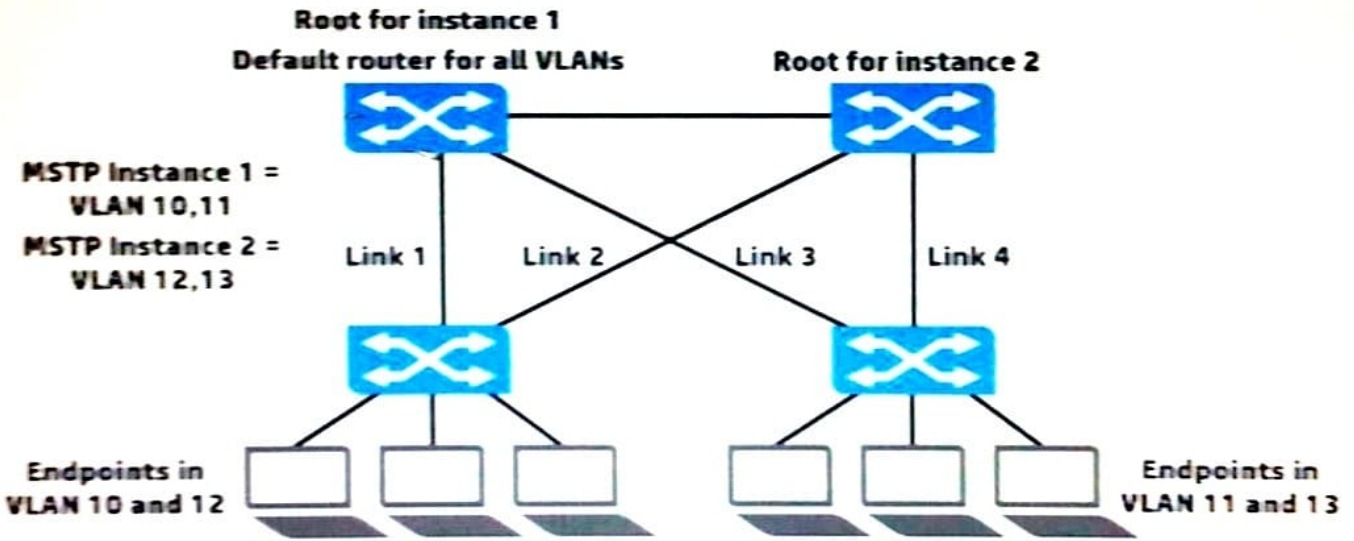
The administrator then has the DHCP client try to acquire addressing information, but the process fails. What should the administrator do to solve this problem?

- A. Execute the routing command on SwitchA.
- B. Execute the dhcp enable command on SwitchA.
- C. Configure DHCP relay on SwitchB.
- D. Enable DHCP Snooping on SwitchA.

Correct Answer: B

**QUESTION 2**

Refer to the exhibit.



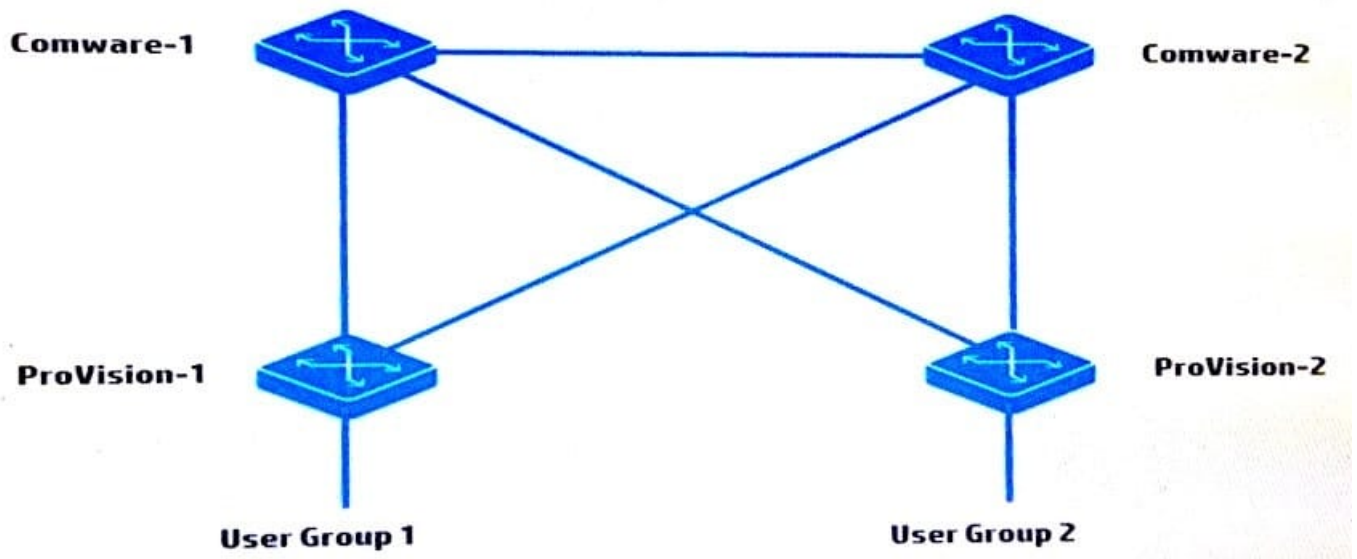
The network administrator is setting up Multiple Spanning Tree Protocol (MSTP) with the settings shown in the exhibit. All the switches are in the same region. The administrator has requested help determining which VLANs each switch-to-switch link should carry. What is a recommendation for this topology?

- A. To prevent disruptions during link failure, Links 1-4 should carry VLANs 10-13.
- B. To optimize forwarding, Links 1 and 2 should only carry VLANs 10 and 12, and Links 3 and 4 should only carry VLANs 11 and 13.
- C. To ensure compatibility with MSTP, Links 1-4 should be untagged in VLAN 1 and have no tagged VLAN assignments.
- D. To optimize forwarding, Links 1 and 3 should only carry VLANs 10 and 11, and Links 2 and 4 should only carry VLANs 12 and 13.

Correct Answer: D

### QUESTION 3

Refer to the exhibit.



A network administrator wants to create a routed topology that ensures redundant connections between User Group 1 and User Group 2. Based on this information, how many broadcast domains should the administrator create?

- A. Two
- B. Three
- C. Four
- D. Seven

Correct Answer: B

**QUESTION 4**

A company has a network comprised of HP Comware and ProVision switches. A network administrator purchases HP Intelligent Management Center (IMC) to manage the switches in this network. Which step must the administrator perform on the Comware switches but not on the ProVision switches?

- A. Configure SNMP traps.
- B. Configure VTY interface authentication.
- C. Define SNMPv2 community strings or SNMPv3 groups and users.
- D. Configure telnet or SSH.

Correct Answer: B

**QUESTION 5**

A network administrator configures this command on an HP ProVision switch:

```
vlan 30 ip helper-address 10.0.3.253
```

The switch is able to ping 10.0.3.253. After the administrator configures the command, users in VLAN 30 report that their PCs fail to acquire addresses using DHCP.

What should the administrator ensure?

- A. that the switch is configured with a dynamic IP routing protocol
- B. that the switch has DHCP relay functions enabled
- C. that the switch has DHCP server functions enabled
- D. that the switch has an IP address on VLAN 30

Correct Answer: A

[HP2-Z37 PDF Dumps](#)

[HP2-Z37 Study Guide](#)

[HP2-Z37 Exam Questions](#)