

HPE6-A15^{Q&As}

Aruba Certified Clearpass Professional 6.5

Pass HP HPE6-A15 Exam with 100% Guarantee

Free Download Real Questions & Answers **PDF** and **VCE** file from:

<https://www.pass2lead.com/hpe6-a15.html>

100% Passing Guarantee
100% Money Back Assurance

Following Questions and Answers are all new published by HP Official Exam Center

- ⚙️ **Instant Download** After Purchase
- ⚙️ **100% Money Back** Guarantee
- ⚙️ **365 Days** Free Update
- ⚙️ **800,000+** Satisfied Customers



QUESTION 1

Refer to the exhibit.

Enforcement Policies - Enterprise Enforcement Policy

Summary	Enforcement	Rules
Enforcement:		
Name:	Enterprise Enforcement Policy	
Description:	Enforcement policies for local and remote employees	
Enforcement Type:	RADIUS	
Default Profile:	[Deny Access Profile]	
Rules:		
Rules Evaluation Algorithm: Evaluate all		
Conditions	Actions	
1. (Tips: Posture Equals HEALTHY (0)) AND (Tips:Role MATCHES ANY Remote Worker Role Engineer testqa) AND (Date:Day-of-Week NOT_BELONGS_TO Saturday, Sunday)	[RADIUS] EMPLOYEE_VLAN, [RADIUS] Remote Employee ACL	
2. (Tips:Role EQUALS Senior_Mgmt) AND (Date:Day-of-Week NOT_BELONGS_TO Saturday, Sunday)	[RADIUS] EMPLOYEE_VLAN	
3. (Tips:Role EQUALS San Jose HR Local) AND (Tips: Posture EQUALS HEALTHY (0))	HR VLAN	
4. (Tips:Role EQUALS [Guest]) AND (Connection:SSID CONTAINS guest)	[RADIUS] WIRELESS_GUEST_NETWORK	
5. (Tips:Role EQUALS Remote Worker) AND (Tips:Posture NOT_EQUALS HEALTHY (0))	RestrictedACL	

Based on the Enforcement Policy configuration shown, when a user with Role Remote Worker connects to the network and the posture token assigned is quarantine, which Enforcement Profile will be applied?

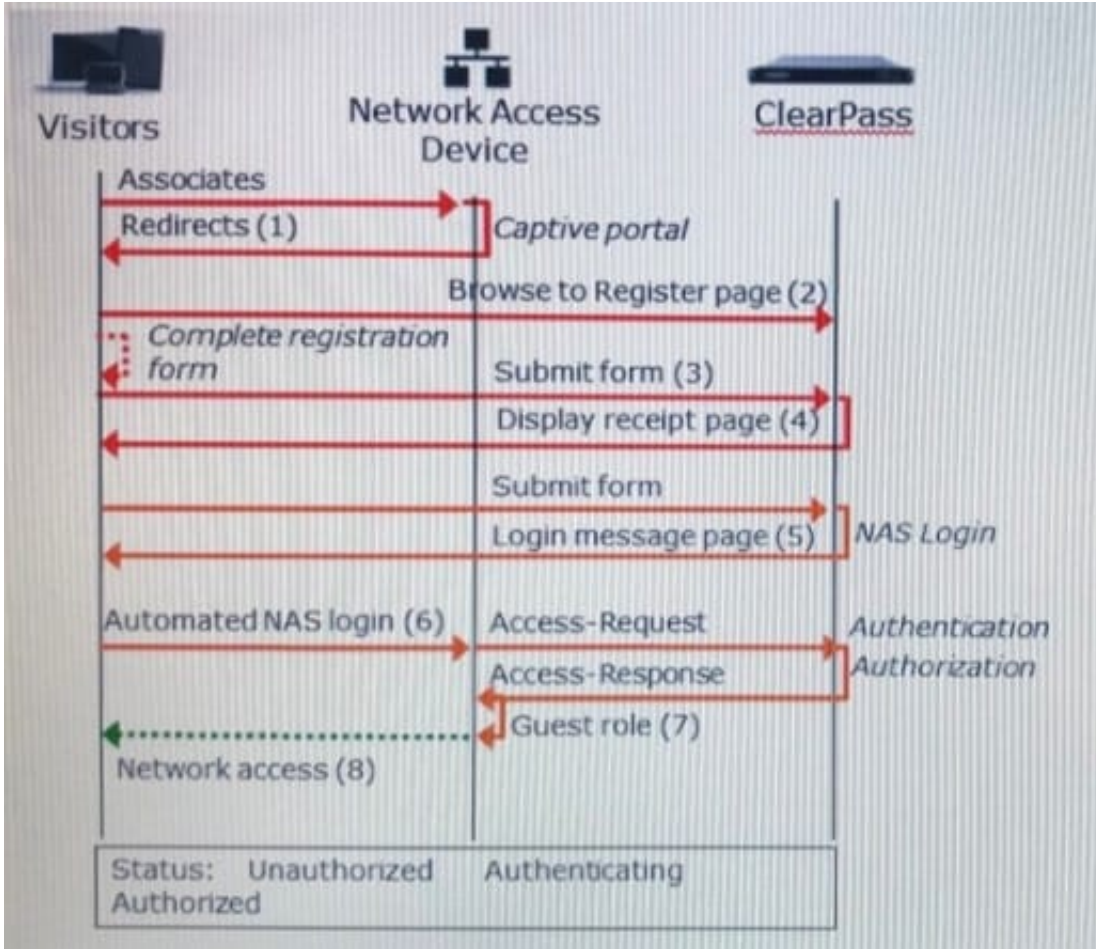
- A. RestrictedACL
- B. Remote Employee ACL
- C. [Deny Access Profile]
- D. EMPLOYEE_VLAN
- E. HR VLAN

Correct Answer: B

The first rule will match, and the Remote Employee ACL will be used.

QUESTION 2

Refer to the exhibit.

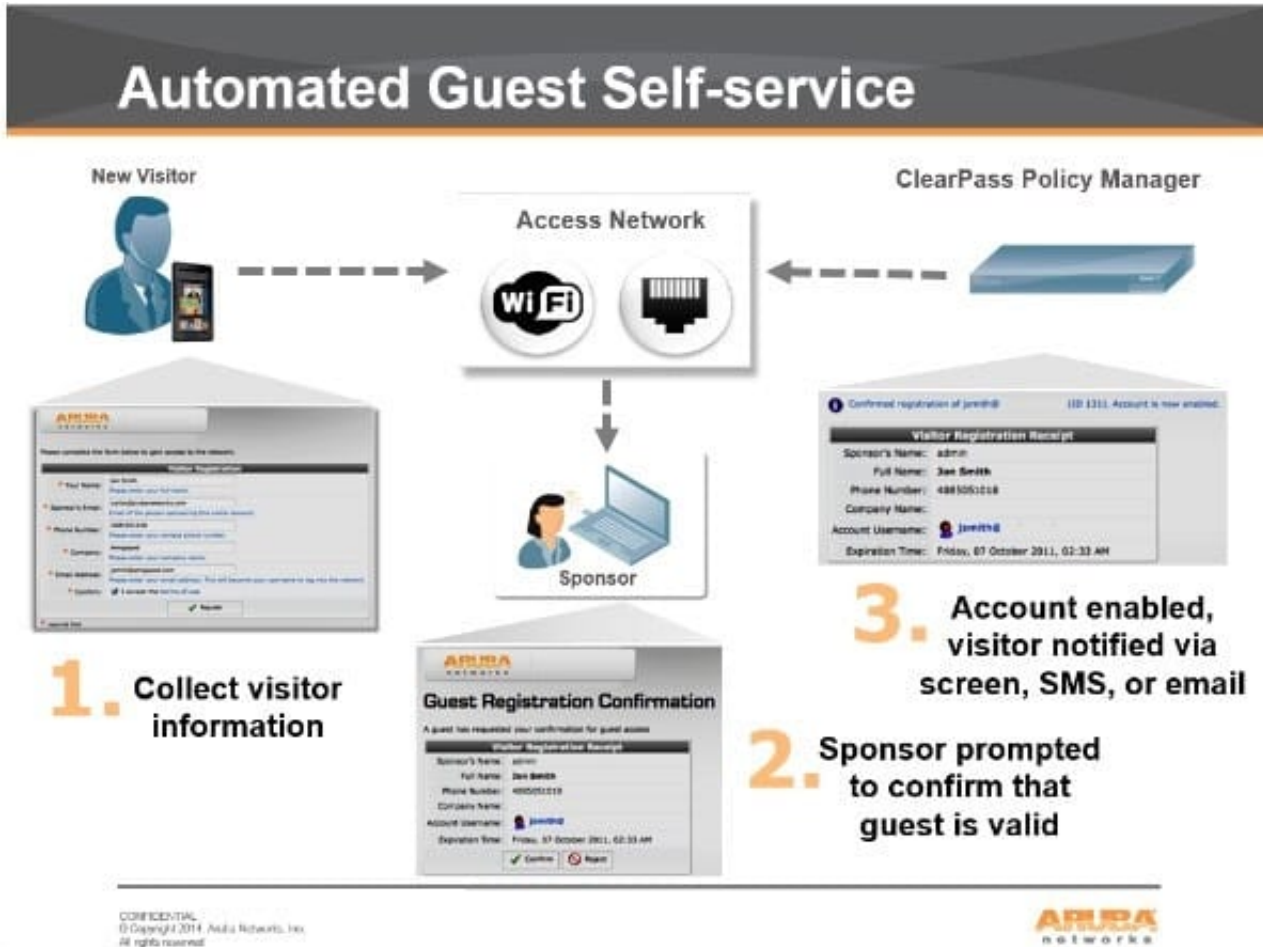


Based on the guest Self-Registration with Sponsor Approval workflow shown, at which stage is an email request sent to the sponsor?

- A. after `Guest Role (7)`
- B. after `Login Message page (5)`
- C. after `Submit form (3)`
- D. after `Automated NAS login (6)`
- E. after `Redirects (1)`

Correct Answer: C

There's the Self Service part of provisioning one's information. Then the sponsor/operator part to confirm that guest is valid. Then the enablement via the sponsor/operator clicking `confirm`.



References: <https://community.arubanetworks.com/t5/Security/Guest-Captive-Portal-sponsor-approval-architecture/td-p/267625>

QUESTION 3

A client's authentication is failing and there are no entries in the ClearPass Access tracker. What is a possible reason for the authentication failure?

- A. The user account has expired.
- B. The client used a wrong password.
- C. The shared secret between the NAD and ClearPass does not match.
- D. The user's certificate is invalid.
- E. The user is not found in the database.

Correct Answer: C

QUESTION 4

Refer to the exhibit.

Policy Manager Entity Details
Enforcement Profile - Lab 4 - Company12 Onboard Pre-Provisioning

Profile

Name:	Lab 4 - Company12 Onboard Pre-Provisioning
Type:	RADIUS
Description:	Use Aruba user role 'BYOD-Provision' for pre-provisioned Onboard users
Action:	Accept
Device Group List:	-

Attributes

Type	Name	Value
1. Radius:Aruba	Aruba-User-Role	BYOD-Provision

Security > User Roles > Edit Role (BYOD-Provision)

User Roles | System Roles | Policies | Time Ranges | Guest Access

Firewall Policies

Name	Rule Count
logon-control	8
captiveportal	6

Add

Captive Portal Profile

Onboarding Page | Onboarding Page | Change

Based on the ClearPass and Aruba Controller configuration settings for Onboarding shown, which statement accurately describes an employee's new personal device connecting to the Onboarding network? (Select two.)

- A. Post-Onboarding, the device will be assigned the BYOD-Provision firewall role in the Aruba Controller.
- B. Pre-Onboarding, the device will be redirected to the 'Onboarding Page' Captive Portal.
- C. The BYOD-Provision role is a ClearPass internal role and exists in ClearPass.
- D. The device will not be redirected to any Onboarding page.
- E. Pre-Onboarding, the device will be assigned the BYOD-Provision firewall role in the Aruba Controller.

Correct Answer: BE

You can pre-provision with the Aruba controller firewall role of BYOD-Provision.

From the Firewall policies part of the exhibit, we see that the onboarding page is set to captive portal.

References: <https://community.arubanetworks.com/t5/Security/CP-OnBoard-not-redirecting-to-portal-on-single-SSID/td-p/284506>

QUESTION 5

Refer to the exhibit.

Home >> Configuration >> Web Logins

RADIUS Web Login

Use this form to make changes to the RADIUS Web Login **Guest Network**.

RADIUS Web Login Editor	
* Name:	<input type="text" value="Guest Network"/> Enter a name for this web login page.
Page Name:	<input type="text" value="Aruba_login"/> Enter a page name for this web login. The web login be accessible from <code>"/guest/page_name.php"</code> .
Description:	<input type="text"/> Comments or descriptive text about the web login.
* Vendor Settings:	<input type="text" value="Aruba Networks"/> ▼ Select a predefined group of settings suitable for standard network configurations.
Address:	<input type="text" value="securelogin.arubanetworks.com"/> Enter the IP address or hostname of the vendor's product here.
Secure Login:	<input type="text" value="Use vendor default"/> ▼ Select a security option to apply to the web login process.
Dynamic Address:	<input type="checkbox"/> The controller will send the IP to submit credentials In multi-controller deployments, it is often required to post credentials to different addresses. The address above will be used whenever the parameter is not available or fails.

When configuring a Web Login Page in ClearPass Guest, the information shown is displayed. What is the page name field used for?

- A. for forming the Web Login Page URL
- B. for Administrators to access the PHP page, but not guests
- C. for Administrators to reference the page only

D. for forming the Web Login Page URL where Administrators add guest users

E. for informing the Web Login Page URL and the page name that guests must configure on their laptop wireless supplicant.

Correct Answer: A

The Page Name is an identifier page name that will appear in the URL -- for example, "/guest/page_name.php".

References: http://www.arubanetworks.com/techdocs/ClearPass/CPGuest_UG_HTML_6.5/Content/Configuration/CreateEditWebLogin.htm

[Latest HPE6-A15 Dumps](#)

[HPE6-A15 Study Guide](#)

[HPE6-A15 Exam Questions](#)