

# HPE6-A44<sup>Q&As</sup>

Scalable WLAN Design and Implementation (SWDI) 8

## Pass HP HPE6-A44 Exam with 100% Guarantee

Free Download Real Questions & Answers **PDF** and **VCE** file from:

<https://www.pass2lead.com/hpe6-a44.html>

100% Passing Guarantee  
100% Money Back Assurance

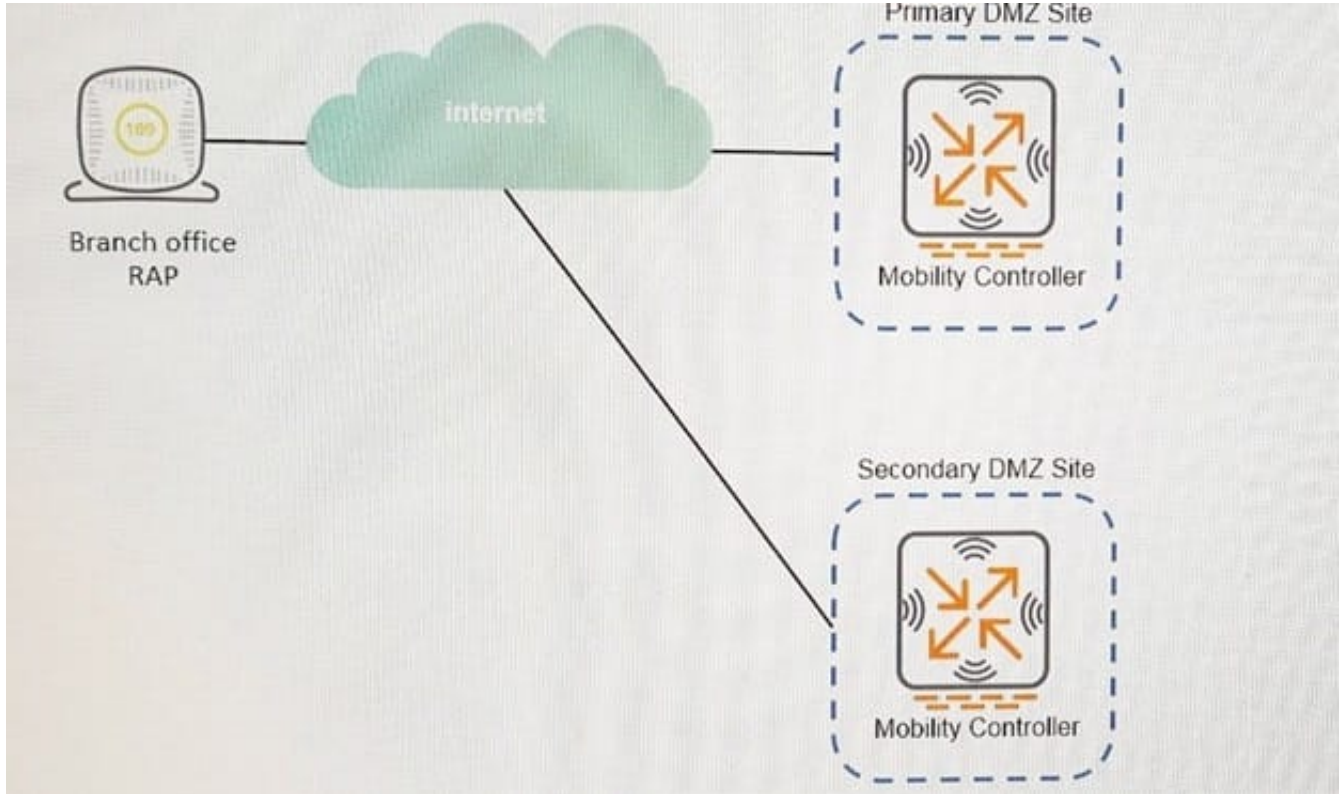
Following Questions and Answers are all new published by HP Official Exam Center

- ⚙️ **Instant Download** After Purchase
- ⚙️ **100% Money Back** Guarantee
- ⚙️ **365 Days** Free Update
- ⚙️ **800,000+** Satisfied Customers



**QUESTION 1**

Refer to the exhibit.



An administrator supports a RAP at a branch office shown in the exhibit. The company has one Mobility Controller (MC) at the Primary DMZ site and one at the Secondary DMZ site. The RAP is configured to connect to only the MC at the Primary DMZ site. A network outage with the ISP at the Primary DMX site causes the RAP to reboot. Upon reboot, the RAP cannot build a tunnel to the Secondary DMZ site MC because the administrator forgot to add the Second LMS IP address to the AP Group configuration. Once the RAP can successfully connect, the administrator can add the Secondary DMZ MC as a backup LMS to fix the AP Group.

What should the administrator implement to allow the RAP to connect to the MC at the Secondary DMZ site while the outage at the primary site persists?

- A. Dynamic discovery through DHCP Option 43
- B. Static configuration from apboot mode
- C. Dynamic discovery through DHCP Option 60
- D. Dynamic discovery through multicast ADP

Correct Answer: A

**QUESTION 2**

Refer to the exhibits.

Exhibit 1: WLAN VAP configuration

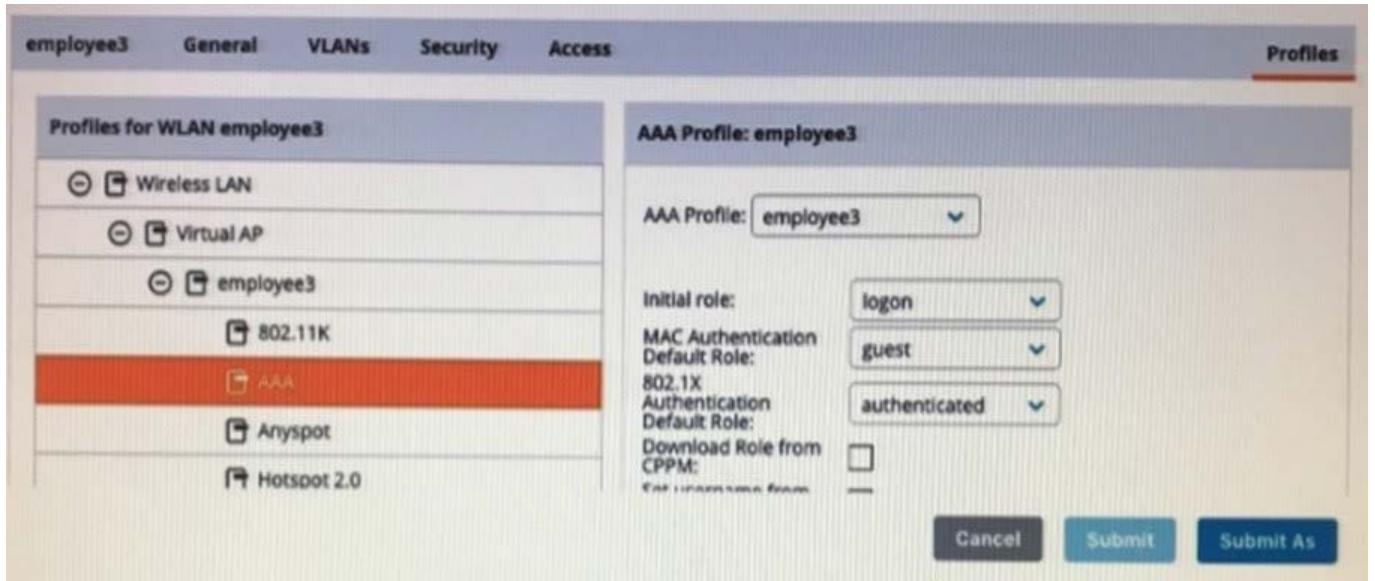


Exhibit 2: Microsoft NPS server configuration

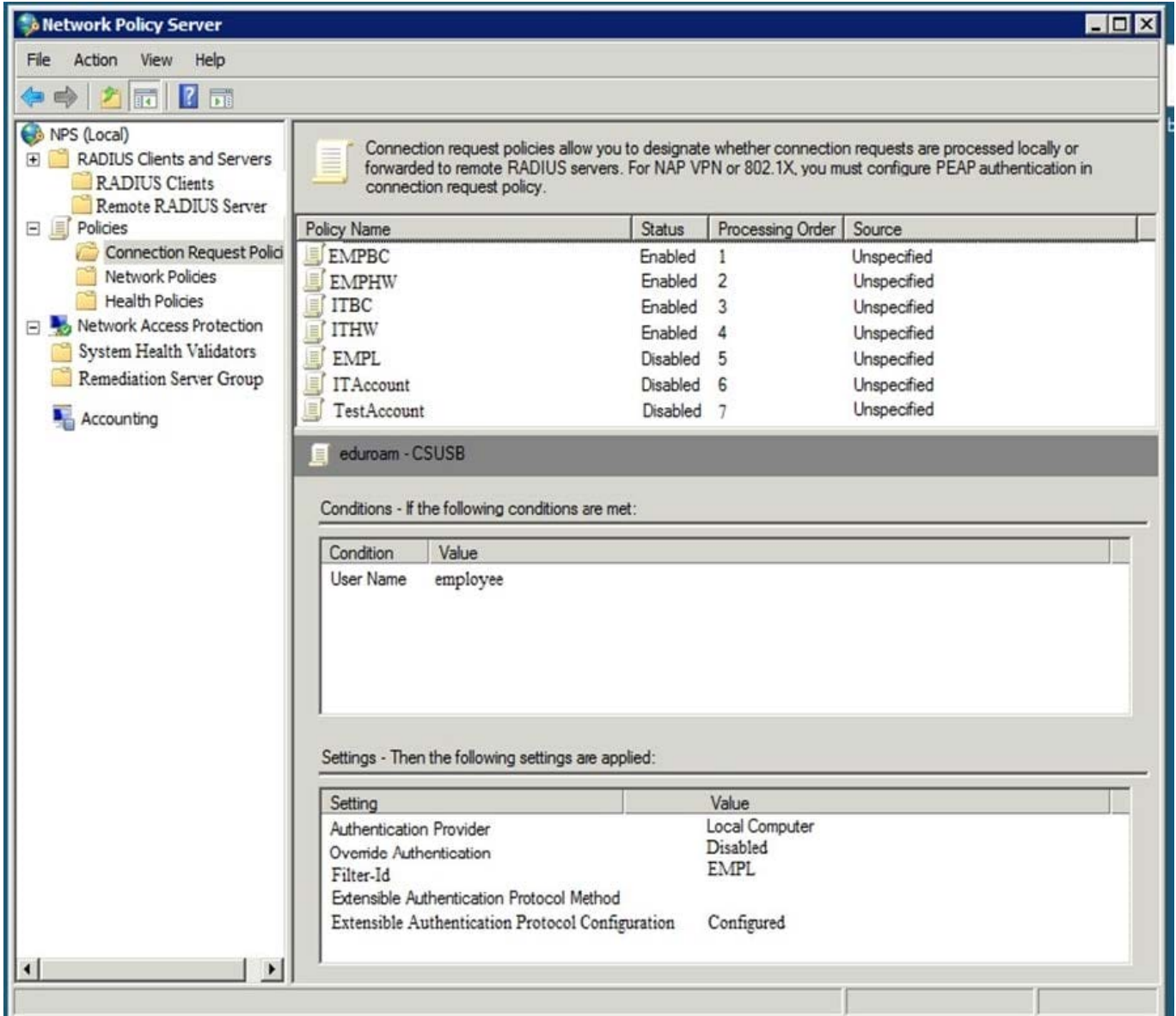


Exhibit 3: Server group configuration for the VAP.

Dashboard	<u>Auth Servers</u>	AAA Profiles	L2 Authentication	L3 Authentication	User Rules	Advanced
Configuration	Server Groups 4					
WLANs	NAME	SERVERS	FAIL THROUGH	LOAD BALANCE	SERVER RULES	
Roles&Policies	default	1	-	-	1	
Access Points	internal	1	-	-	1	
AP Groups	<u>Server-Group-Aruba</u>	<u>3</u>	-	-	<u>2</u>	
Authentication	employee	1	-	-	0	
Services	+ Server Group>Server-Group-Aruba-HPE			Servers	Options	<u>Server Rules</u>
Interfaces	ATTRIBUTE	OPERATION	OPERAND	TYPE	ACTION	VALUE
Controllers	Filter-Id	value-of	-	string	set role	-
System	Filter-Id	equals	corporate	string	set role	employee
Tasks						

An employee authenticates with the username employee and the correct password. However, once the user authenticates, an administrator notices that the employee is assigned the authenticated role and not the desired employee role.

What should the administrator do to solve this problem?

- A. Add a new server group rule on the controller.
- B. Associate the user to the employee group in Microsoft NPS.
- C. Change the server group name on the controller.
- D. Reference the employee role in the WLAN VAP on the controller.

Correct Answer: D

**QUESTION 3**

An administrator stages an AP and re-provisions it as a RAP from the Mobility Master (MM). When re-provisioning the RAP, the administrator must enter a user\'s credentials. What is the purpose of these credentials?

- A. to authenticate users on wired and wireless ports
- B. to authenticate the RAP device
- C. to authenticate users on wireless ports
- D. to authenticate users on wired ports

Correct Answer: B

**QUESTION 4**

An administrator wants to temporarily deny login access who fail 802.1x authentication functions three or more times. Which process will the administrator need to configure?

- A. EAP termination
- B. blacklisting
- C. captive portal
- D. fail through

Correct Answer: A

---

**QUESTION 5**

An administrator supports a cluster of four Aruba Mobility Controllers (MCs) with management addresses of 10.1.100.101, 10.1.100.102, 10.1.100.103, and 10.1.274.426. The administrator accesses an AP associated with this cluster, reboots it and accesses apboot mode. The administrator executes the printenv command. Which AP parameter contains the IP addresses of the cluster members that the AP should use to connect to the cluster?

- A. Nodelist
- B. Servername
- C. Master\_ip
- D. Cfg\_lms

Correct Answer: A

Reference:

<https://www.arubanetworks.com/assets/atmosphere/2018-Airheads/Fundamentals%20Guide%20-%20ArubaOS%208%20Fundamentals.pdf>

Page 89

[HPE6-A44 PDF Dumps](#)

[HPE6-A44 VCE Dumps](#)

[HPE6-A44 Practice Test](#)