

HPE6-A71^{Q&As}

Aruba Certified Mobility Professional Exam

Pass HP HPE6-A71 Exam with 100% Guarantee

Free Download Real Questions & Answers **PDF** and **VCE** file from:

<https://www.pass2lead.com/hpe6-a71.html>

100% Passing Guarantee
100% Money Back Assurance

Following Questions and Answers are all new published by HP Official Exam Center

- ⚙️ **Instant Download** After Purchase
- ⚙️ **100% Money Back** Guarantee
- ⚙️ **365 Days** Free Update
- ⚙️ **800,000+** Satisfied Customers



QUESTION 1

Refer to the exhibit.



An administrator configures policies to allow RAPs to connect to the corporate office and remote users to access resources. Which function does the VPN address pool serve in this situation?

- A. Assigns an inner IP address to the RAP used within the VPN
- B. Assigns a public IP address that the RAP should use on its internet port
- C. Assigns IP addresses for remote users
- D. Assigns a DHCP address pool for the RAP

Correct Answer: A

QUESTION 2

Refer to the exhibits.

Exhibit 1: WLAN VAP configuration

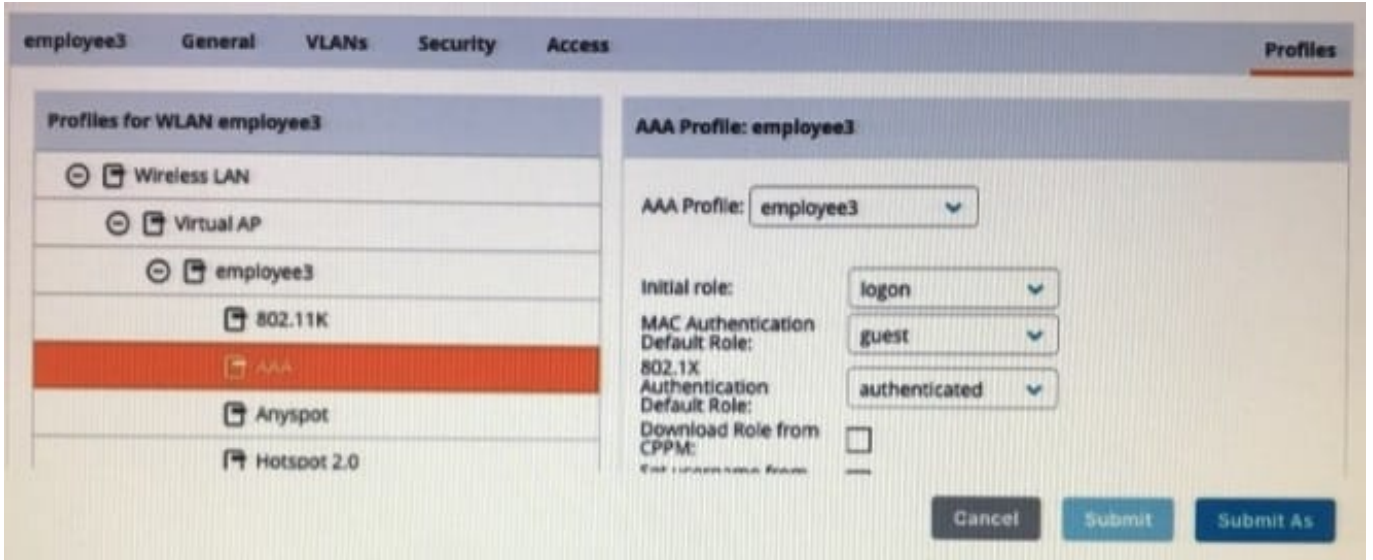


Exhibit 2: Microsoft NPS server configuration

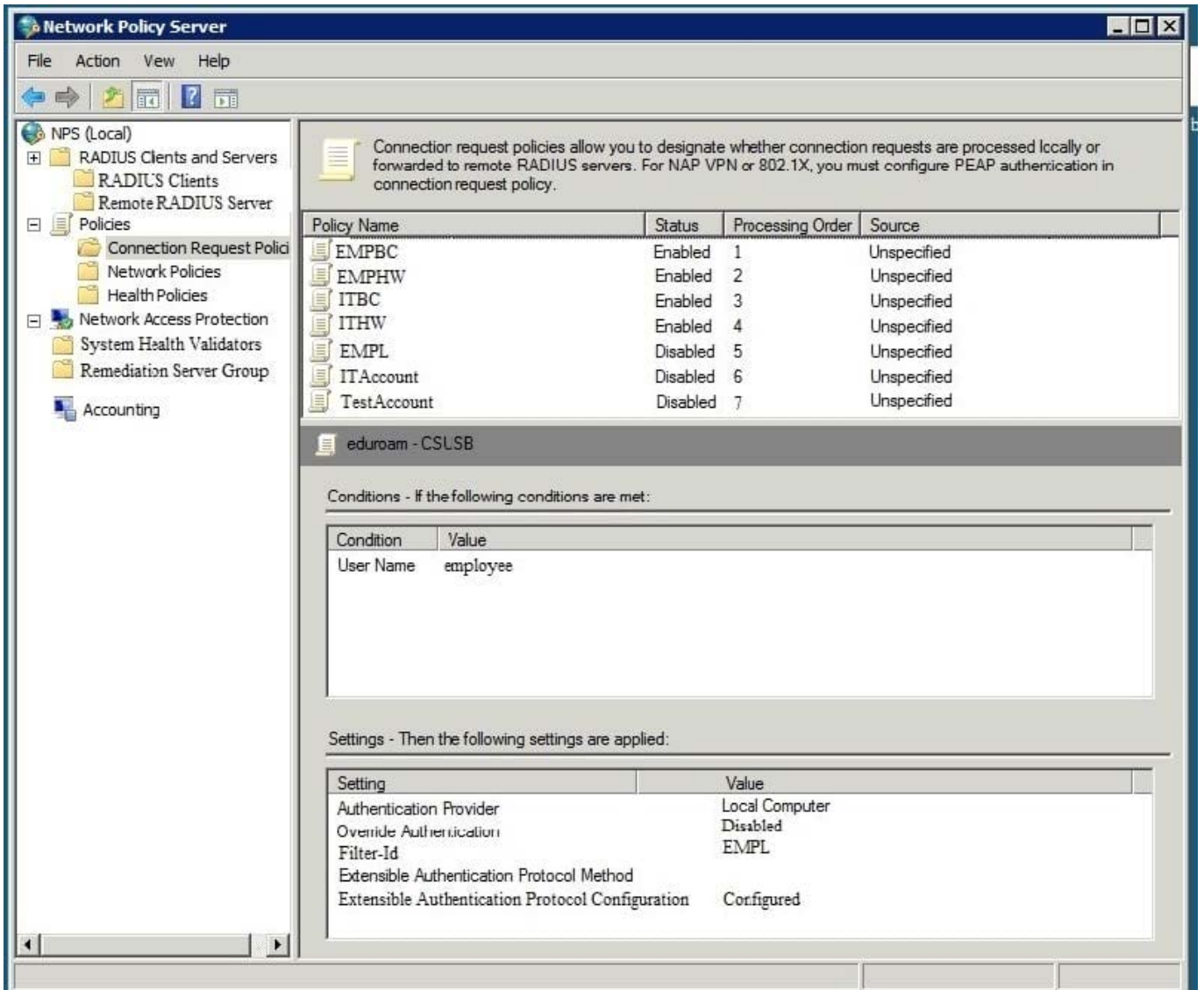


Exhibit 3: Server group configuration for the VAP.

Dashboard	<u>Auth Servers</u>	AAA Profiles	L2 Authentication	L3 Authentication	User Rules	Advanced
Configuration	Server Groups 4					
WLANs	NAME	SERVERS	FAIL THROUGH	LOAD BALANCE	SERVER RULES	
Roles&Policies	default	1	-	-	1	
Access Points	internal	1	-	-	1	
AP Groups	<u>Server-Group-Aruba</u>	<u>3</u>	-	-	<u>2</u>	
	employee	1	-	-	0	
Authentication	+					
Services	Server Group>Server-Group-Aruba-HPE		Servers	Options	<u>Server Rules</u>	
Interfaces						
Controllers	ATTRIBUTE	OPERATION	OPERAND	TYPE	ACTION	VALUE
System	Filter-Id	value-of	-	string	set role	-
Tasks	Filter-Id	equals	corporate	string	set role	employee

An employee authenticates with the username employee and the correct password. However, once the user authenticates, an administrator notices that the employee is assigned the authenticated role and not the desired employee role.

What should the administrator do to solve this problem?

- A. Add a new server group rule on the controller.
- B. Associate the user to the employee group in Microsoft NPS.
- C. Change the server group name on the controller.
- D. Reference the employee role in the WLAN VAP on the controller.

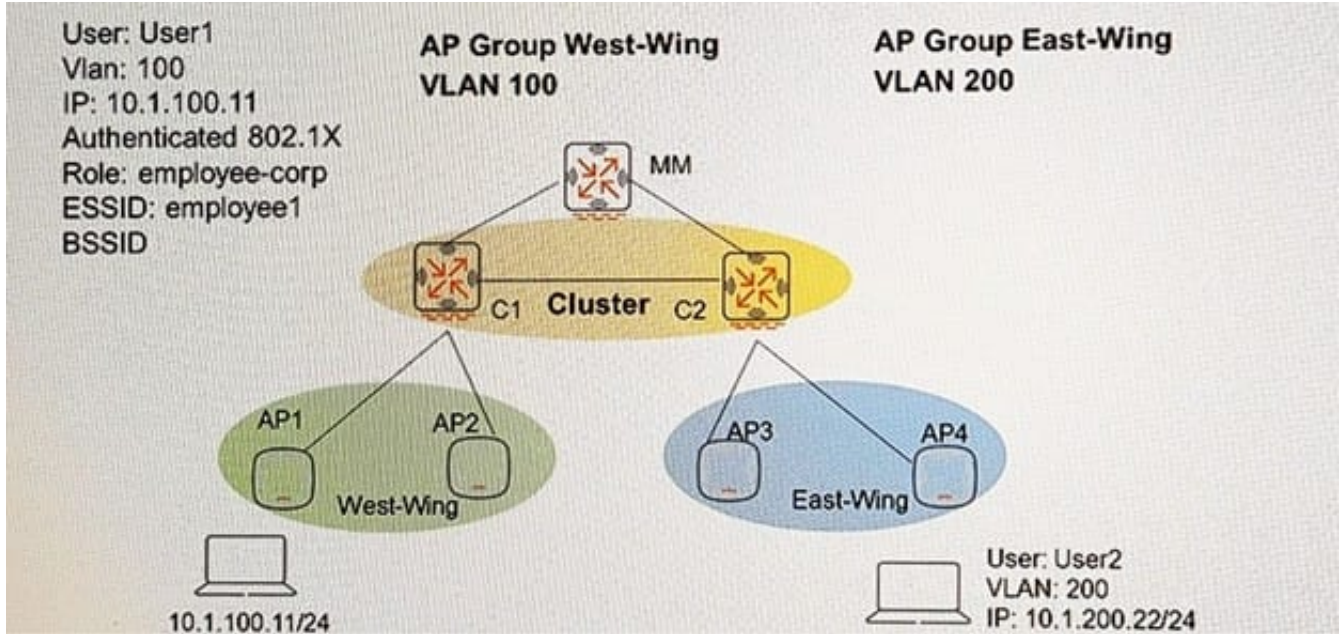
Correct Answer: A

We have to add new rule:

Filter-Id - equals - EMPL - string - set role - employee

QUESTION 3

Refer to the exhibit.



Controllers are configured in a cluster as shown in the exhibit. These are the network details.

- A Mobility Master (MM) manages the cluster.
- The cluster contains two controllers: C1 and C2.
- AP1 and AP2 use C1 as their Active AP Anchor Controller (A-AAC), with C2 as their Standby AAC (SAAC).
- AP3 and AP4 use C2 as their A-AAC with, C1 as their S-AAC.

User1 establishes a wireless connection via AP1, where the Active User Controller (U- UAC) assigned is C1, with C2 as the standby. What happens when User1 roams the wireless network and eventually their session is handled by AP3?

- A. The AP3's A-AAC switches to C1, and the user's A-UAC remains on C1.
- B. The AP3's A-AAC switches to C2, and the user's A-UAC remains on C2.
- C. The AP3's A-AAC switches to C1, and the user's A-UAC remains on C2.
- D. The AP3's A-AAC switches to C2, and the user's A-UAC remains on C1.

Correct Answer: D

QUESTION 4

Which forwarding mode is used for a WLAN if a RAP needs to decrypt all user traffic and forward it locally?

- A. Split-tunnel

- B. Bridge
 - C. Tunnel
 - D. Decrypt-tunnel
- Correct Answer: B

QUESTION 5

Refer to the exhibit.

```
CT1# show ap remote debug mgmt.-frames ap-name AP1
Timestamp      stype      SA          DA          ...Misc
-----
Mar 3 05:35:49 deauth     d8:c7:c8:20:30:60 ac:f1:df:01:49:69 Response to EAP
Challenge Failed
Mar 3 05:35:19  assoc-resp d8:c7:c8:20:30:60 ac:f1:df:01:49:69 Success
Mar 3 05:35:19  assoc-req  ac:f1:df:01:49:69 d8:c7:c8:20:30:60 -
Mar 3 05:35:19  auth       d8:c7:c8:20:30:60 ac:f1:df:01:49:69 Success
Mar 3 05:35:19  auth       ac:f1:df:01:49:69 d8:c7:c8:20:30:60 Success
```

A user uses Microsoft Windows for a wireless session. Based on the output shown in the exhibit for the selected Aruba AP, what is the possible problem with this user's wireless session?

- A. The AP has reached the limit for number of users that are allowed to connect to the radio.
- B. The controller cannot reach the AAA server to perform the authentication.
- C. The user is configured for PEAP, but the WLAN profile on the controller implemented EAP-TLS.
- D. The user misconfigured the Managed Network Settings profile in Windows.

Correct Answer: C