

HPE6-A78^{Q&As}

Aruba Certified Network Security Associate

Pass HP HPE6-A78 Exam with 100% Guarantee

Free Download Real Questions & Answers **PDF** and **VCE** file from:

<https://www.pass2lead.com/hpe6-a78.html>

100% Passing Guarantee
100% Money Back Assurance

Following Questions and Answers are all new published by HP Official Exam Center

-  **Instant Download** After Purchase
-  **100% Money Back** Guarantee
-  **365 Days** Free Update
-  **800,000+** Satisfied Customers



QUESTION 1

How should admins deal with vulnerabilities that they find in their systems?

- A. They should apply fixes, such as patches, to close the vulnerability before a hacker exploits it.
- B. They should add the vulnerability to their Common Vulnerabilities and Exposures (CVE).
- C. They should classify the vulnerability as malware, a DoS attack or a phishing attack.
- D. They should notify the security team as soon as possible that the network has already been breached.

Correct Answer: A

QUESTION 2

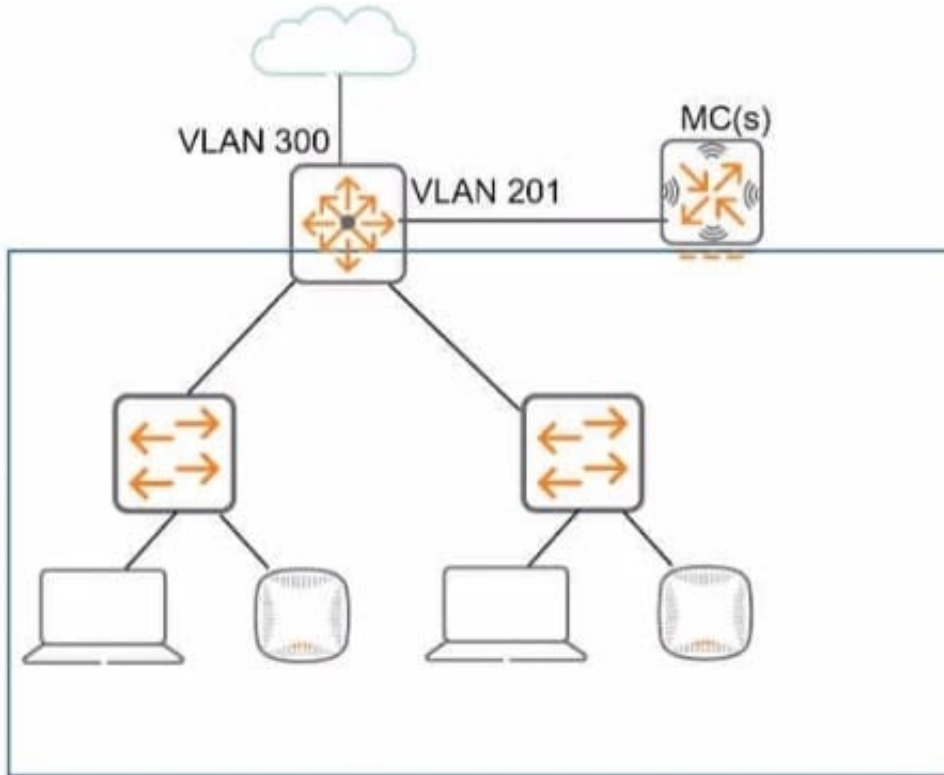
What is a guideline for managing local certificates on an ArubaOS-Switch?

- A. Before installing the local certificate, create a trust anchor (TA) profile with the root CA certificate for the certificate that you will install
- B. Install an Online Certificate Status Protocol (OCSP) certificate to simplify the process of enrolling and re-enrolling for certificate
- C. Generate the certificate signing request (CSR) with a program offline, then, install both the certificate and the private key on the switch in a single file.
- D. Create a self-signed certificate online on the switch because ArubaOS-Switches do not support CA-signed certificates.

Correct Answer: C

QUESTION 3

Refer to the exhibit, which shows the current network topology.



You are deploying a new wireless solution with an Aruba Mobility Master (MM), Aruba Mobility Controllers (MCs), and campus APs (CAPs). The solution will include a WLAN that uses Tunnel for the forwarding mode and implements WPA3-Enterprise security.

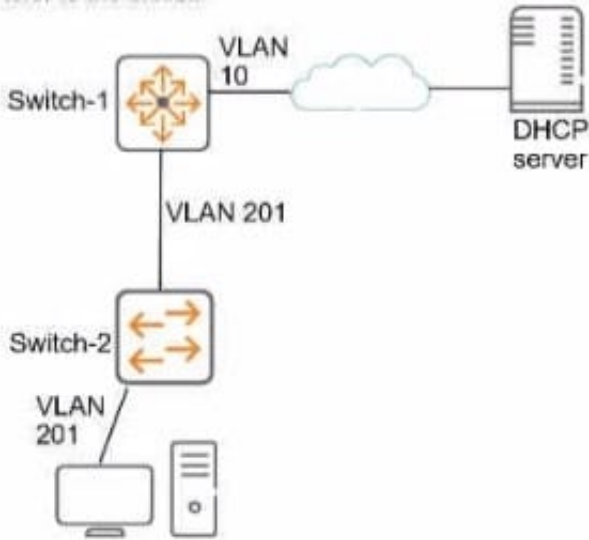
What is a guideline for setting up the vlan for wireless devices connected to the WLAN?

- A. Assign the WLAN to a single new VLAN which is dedicated to wireless users
- B. Use wireless user roles to assign the devices to different VLANs in the 100-150 range
- C. Assign the WLAN to a named VLAN which specified 100-150 as the range of IDs.
- D. Use wireless user roles to assign the devices to a range of new vlan IDs.

Correct Answer: B

QUESTION 4

Refer to the exhibit.



This company has ArubaOS-Switches. The exhibit shows one access layer switch, Switch-2, as an example, but the campus actually has more switches. The company wants to stop any internal users from exploiting ARP.

What is the proper way to configure the switches to meet these requirements?

- A. On Switch-1, enable ARP protection globally, and enable ARP protection on all VLANs.
- B. On Switch-2, make ports connected to employee devices trusted ports for ARP protection
- C. On Switch-2, enable DHCP snooping globally and on VLAN 201 before enabling ARP protection
- D. On Switch-2, configure static IP-to-MAC bindings for all end-user devices on the network

Correct Answer: D

QUESTION 5

You are configuring ArubaOS-CX switches to tunnel client traffic to an Aruba Mobility Controller (MC). What should you do to enhance security for control channel communications between the switches and the MC?

- A. Create one UBT zone for control traffic and a second UBT zone for clients.
- B. Configure a long, random PAPI security key that matches on the switches and the MC.
- C. Install certificates on the switches, and make sure that CPsec is enabled on the MC
- D. Make sure that the UBT client vlan is assigned to the interface on which the switches reach the MC and only that interface.

Correct Answer: C