

# HPE6-A80<sup>Q&As</sup>

Aruba Certified Design Expert Written

**Pass HP HPE6-A80 Exam with 100% Guarantee**

Free Download Real Questions & Answers **PDF** and **VCE** file from:

<https://www.pass2lead.com/hpe6-a80.html>

100% Passing Guarantee  
100% Money Back Assurance

Following Questions and Answers are all new published by HP Official Exam Center

-  **Instant Download** After Purchase
-  **100% Money Back** Guarantee
-  **365 Days** Free Update
-  **800,000+** Satisfied Customers



### QUESTION 1

A retailer currently has two redundant ClearPass C2000 0L36O Gen9 hardware appliances and two perpetual 1K Access licenses. The customer uses ClearPass to authenticate employee wireless devices and other corporate wireless devices. ClearPass logs indicate that, peak license usage is currently 1900.

The customer now wants to add a guest access solution. Guests will connect to an open SSiD and be redirected to a portal which they can use to self-register and log in. The customer anticipates that up to 550 guest devices will connect at the same time.

The customer requires the most cost-effective solution that will meet the requirements. What should the network architect recommend for this solution?

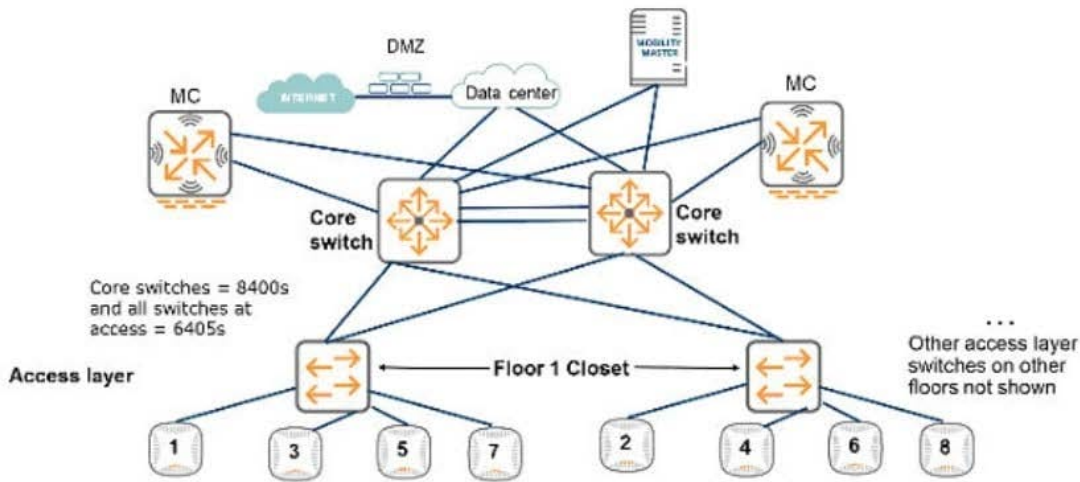
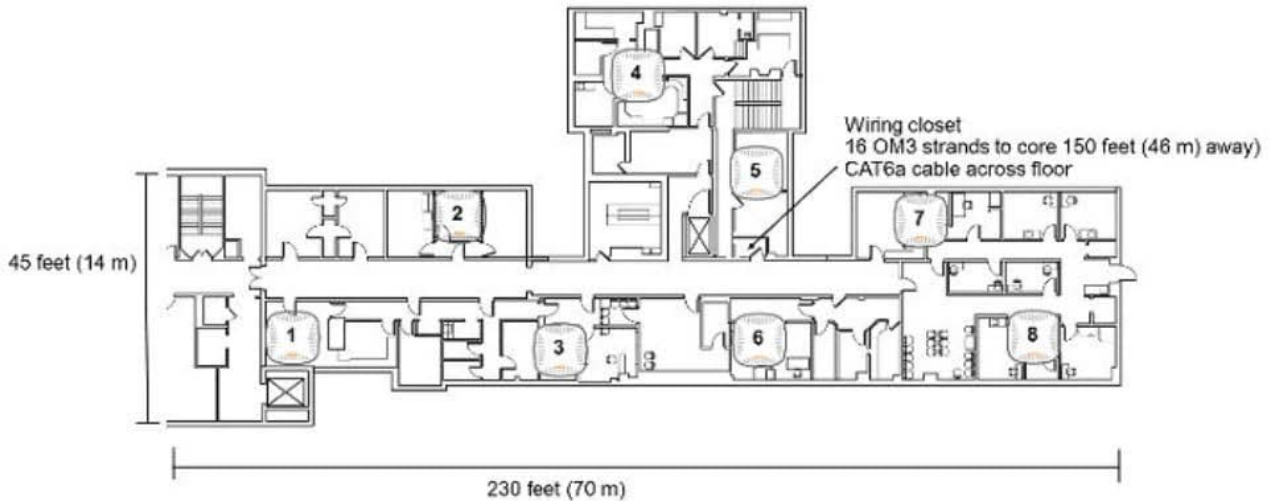
- A. 1K + 500 Access licenses; 1K + 500 Guest licenses
- B. 1K + 500 Access licenses; Two 1K Onboard licenses
- C. 1K + 500 Access licenses
- D. Two 1K Guest licenses

Correct Answer: D

---

### QUESTION 2

Refer to the exhibit.



A customer needs to support resilient wireless services

What is one way that this design helps to minimize the impact of a failed access layer switch on these services?

- A. The switches support Smart Rate and dual home AP connections.
- B. The 8400s and 6405s use Virtual Switching Extension (VSX) in core and access.
- C. Each access layer switch has two redundant links to the core.
- D. APs in the same area connect to different switches.

Correct Answer: A

**QUESTION 3**

Refer to the exhibit.

Features	7005	7008	7010	7024	7030
Maximum campus AP licenses	16	16	32	32	64
Maximum remote AP licenses	16	16	32	32	64
Maximum concurrent users/devices	1024	1,024	2,048	2,048	4,096
Maximum VLANs	4094	4094	4,094	4,094	4,094
Active firewall sessions	16,384	16,384	32,768	32,768	65,356
Concurrent GRE tunnels	256	256	512	512	1,024
Concurrent IPsec sessions	512	512	1,024	1,024	2,048
Mobility Access Switch tunneled-node ports	512	512	1,024	1,024	2,048
Firewall throughput	2 Gbps	2 Gbps	4 Gbps	4 Gbps	8 Gbps
Encrypted throughput (3DES, AES-CBC)	1.2 Gbps	1.2 Gbps	2.4 Gbps	2.4 Gbps	2.4 Gbps
Encrypted throughput (AES-	1.6 Gbps	1.6 Gbps	3.4 Gbps	3.4 Gbps	4 Gbps

Features	7005	7008	7010	7024	7030
Form factor/footprint	Compact	Compact	1 rack unit	1 rack unit	1 rack unit
Auto-negotiating 10/1000/1000BASE-T PoE+ ports	N/A	8	12	24	N/A
Auto-negotiating 10/1000/1000BASE-T ports	4	N/A	4	N/A	8 (combo)
Gigabit Ethernet ports (GBIC or SFP)	N/A	N/A	2 SFP	2 SFP+	8 (combo)
PoE power reserve	N/A	100W	150W	400W	N/A

A customer needs a new branch office solution that:

provides 802.11ac wireless access to local resources and the local Internet connection

connects wired and wireless users to resources at the main office in a secure manner

The office has 200 users, who will use up to two wireless devices at the same time. The architect has determined that the office requires 10-13 AP-515s. The customer wants to support a total bandwidth from an or me APS or about 2 Gbps.

The entire site is currently wired for CAT5e from a single wiring closet, which contains two access switches, a core switch, and the Internet cable modem, which has 10/100/1000 Mbps BASE-T ports. The wired network will handle about

1 Gbps of traffic. The switches do not support PoE/PoE+.

About 75 percent of all traffic is destined to the main office

The architect has looked up these specs for 7000 series controllers.

Which MC will meet the needs in the most cost-effective manner?

- A. 7024
- B. 7030
- C. 7010
- D. 7008

Correct Answer: A

---

#### QUESTION 4

A customer has multiple medium and large branch sites, each of which requires between 5 and 16 APs and supports between 200 and 600 wireless clients. Every branch site has an Internet connection, which it uses to reach the central data

center. The customer would prefer the WAN links to be optimized in the solution.

Different use cases require SSIDs for tunneled traffic from remote sites to central location, traffic that must remain local on the remote site, and traffic which would need to egress out from remote site Internet connection.

Which branch office solution best meets the customer needs?

- A. IAPs with Aruba central
- B. RAPs and branch office controllers
- C. IAPs with branch office controllers
- D. CAPS and branch office controllers

Correct Answer: A

---

#### QUESTION 5

A customer has an Aruba solution with APs, MCs, and an MM. The customer also uses AirWave and ClearPass. The customer wants to add Aruba CX Switches, which use per-user tunneled node, to the solution. How should the Aruba CX Switches integrate with the existing solution in order to determine when to tunnel device traffic to MCs?

- A. They should be managed by AirWave with SNMPv3.
- B. They should implement authentication to ClearPass.
- C. They should be directed to MCs by a DHCP or DNS server.
- D. They should be manually added as MDs in MM.

Correct Answer: C

[Latest HPE6-A80 Dumps](#)

[HPE6-A80 VCE Dumps](#)

[HPE6-A80 Practice Test](#)