

# HPE6-A80<sup>Q&As</sup>

Aruba Certified Design Expert Written

**Pass HP HPE6-A80 Exam with 100% Guarantee**

Free Download Real Questions & Answers **PDF** and **VCE** file from:

<https://www.pass2lead.com/hpe6-a80.html>

100% Passing Guarantee  
100% Money Back Assurance

Following Questions and Answers are all new published by HP Official Exam Center

-  **Instant Download** After Purchase
-  **100% Money Back** Guarantee
-  **365 Days** Free Update
-  **800,000+** Satisfied Customers



**QUESTION 1**

Refer to the exhibit.

Line#	Part Number	Description	Manufacturer
1.00	JW736A	Aruba 7205 (US) 2-port 10GBASE-X (SFP+) Controller	Hewlett Packard Enter...
1.01	H3CW3E	Aruba 1Y FC NBD Exch 7205 Controller SVC [for JW736A]	Hewlett Packard Enter...
1.02	JW091A	SFP-10GE-SR 10GBASE-SR SFP+ 850nm Pluggable LC Conn...	Hewlett Packard Enter...
2.00	JL323A	Aruba 2930M 40G 8 Smart Rate PoE+ 1-slot Switch	Hewlett Packard Enter...
2.01	HT6U1E	HPE 3Y FC 4H Exch Aruba2930MSRPOE SVC [for JL323A]	Hewlett Packard Enter...
2.02	JL086A	Aruba X372 54VDC 680W Power Supply	Hewlett Packard Enter...
2.03	JL086A	ABA INCLUDED: Power Cord - U.S. localization	Hewlett Packard Enter...
2.04	JL325A	Aruba 2930 2-port Stacking Module	Hewlett Packard Enter...
2.05	JL083A	Aruba 3810M/2930M 4SFP+ MACsec Module	Hewlett Packard Enter...
2.06	J9150D	Aruba 10G SFP+ LC SR 300m MMF Transceiver	Hewlett Packard Enter...
3.00	J9821A	Aruba 5406R z12 Switch	Hewlett Packard Enter...
3.01	H1MT0E	HPE 3Y FC 24x7 Aruba 5406R z12 Switc SVC [for J9821A]	Hewlett Packard Enter...
3.02	U4832E	HPE Networks 54xx/82xx z1 Startup SVC [for J9821A]	Hewlett Packard Enter...
3.03	J9828A	Aruba 5400R 700W PoE+ z12 PSU	Hewlett Packard Enter...
3.04	J9828A	ABA INCLUDED: Power Cord - U.S. localization	Hewlett Packard Enter...
3.05	J9993A	Aruba 8p 1G/10GbE SFP+ v3 z12 Mod	Hewlett Packard Enter...
3.06	J9150D	Aruba 10G SFP+ LC SR 300m MMF Transceiver	Hewlett Packard Enter...
3.07	J4858D	Aruba 1G SFP LC SX 500m MMF Transceiver	Hewlett Packard Enter...
3.08	J9996A	Aruba 2p 40GbE QSFP+ v3 z12 Mod	Hewlett Packard Enter...
3.09	JL308A	Aruba 40G QSFP+ LC BiDi 150m MMF 2-strand Transceiver	Hewlett Packard Enter...
4.00	JH234A	HPE X242 40G QSFP+ to QSFP+ 1m DAC Cable	Hewlett Packard Enter...

The network architect has created the 60M shown in the exhibit for a complete new wired and wireless solution for a customer. This solution the customer wants to discover and manage every component of the network in Airwave, including switches, MCS, APS, and switches.

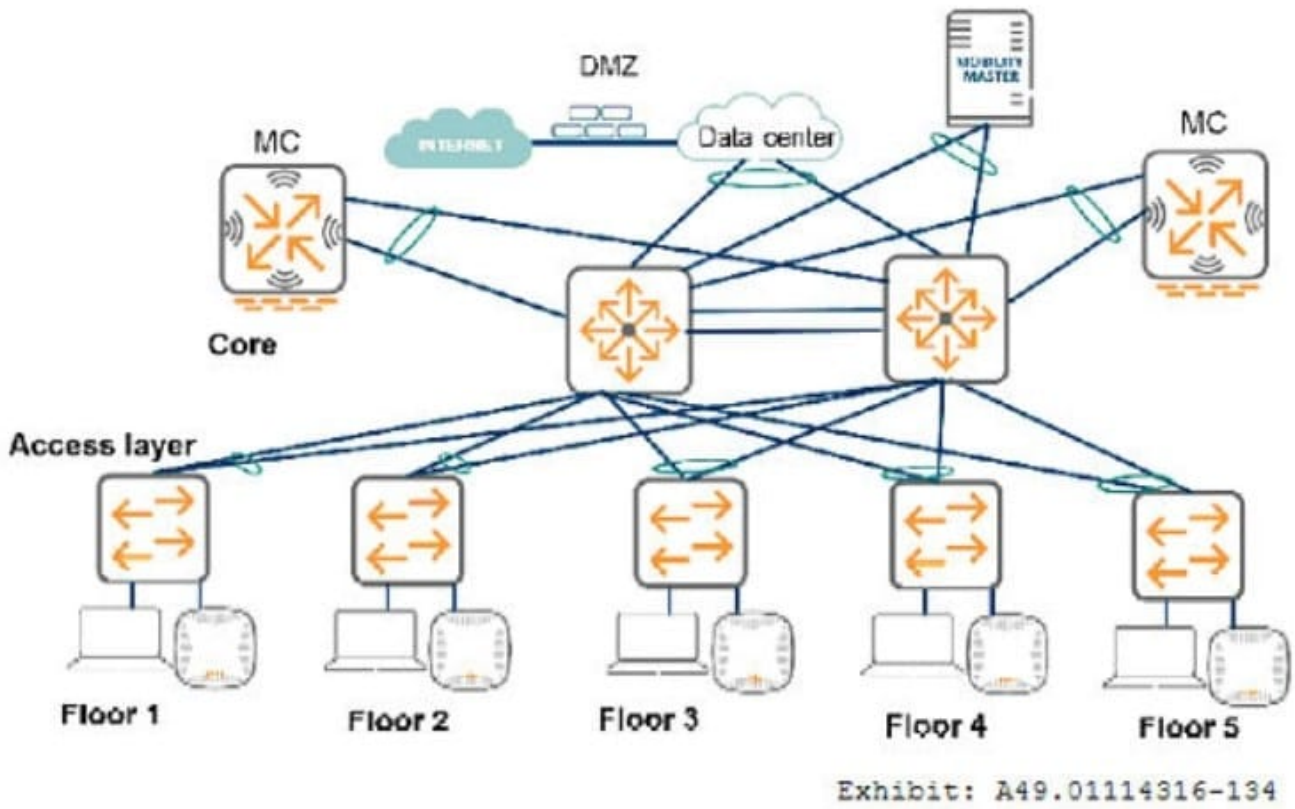
How many AirWave licenses does the architect need to add?

- A. 30
- B. 222
- C. 7122
- D. 6930

Correct Answer: A

**QUESTION 2**

Refer to the exhibit.



The exhibit shows the topology for a new Aruba solution. The MCs are in a cluster and support all of the wireless traffic in

the network. The core switches route all traffic and support all VLANs. The access layer switches do NOT use tunnelednode, or dynamic segmentation.

The customer has indicated that it has these VLANs for user devices.

\*

VLAN 11 for Floor 1 employee wired devices

\*

VLAN 12 for Floor 2 employee wired devices

\*

VLAN 13 for Floor 3 employee wired devices

\*

VLAN 14 for Floor 4 employee wired devices

\*

VLAN 15 for Floor 5 employee wired devices

\*

VLAN 101 for all employee wireless devices

\*

VLAN 102 for all guest wireless devices

In which locations should the architect plan the VLANs?

A.

VLANs 11-15 on one MC. VLANs 101 and 102 on the other MC. (Other VLANs will be used on the access layer switches.)

B.

VLANs 11-15, 101, and 102 on both MCs. (Other VLANs will be used on the access layer switches.)

C.

VLANs 11-15 on the access layer switches on the corresponding floor; VLAN 101 on one MC and VLAN 102 on the other MC

D.

VLANs 11-15 on the access layer switches on the corresponding floor; VLANs 101 and 102 on both MCs.

Correct Answer: C

---

### QUESTION 3

A hospital needs a better way to track its inventory including wireless medical devices that are moved around the site a lot. Which solution meets these needs?

A. Aruba asset tags and beacons

B. Aruba beacons, APs, and AirWave

C. Aruba beacons and Meridian

D. Aruba asset tags, APs; and Meridian

Correct Answer: C

---

### QUESTION 4

A retailer currently has two redundant ClearPass C2000 0L360 Gen9 hardware appliances and two perpetual 1K Access licenses. The customer uses ClearPass to authenticate employee wireless devices and other corporate wireless devices. ClearPass logs indicate that, peak license usage is currently 1900.

The customer now wants to add a guest access solution. Guests will connect to an open SSID and be redirected to a portal which they can use to self-register and log in. The customer anticipates that up to 550 guest devices will connect at the same time.

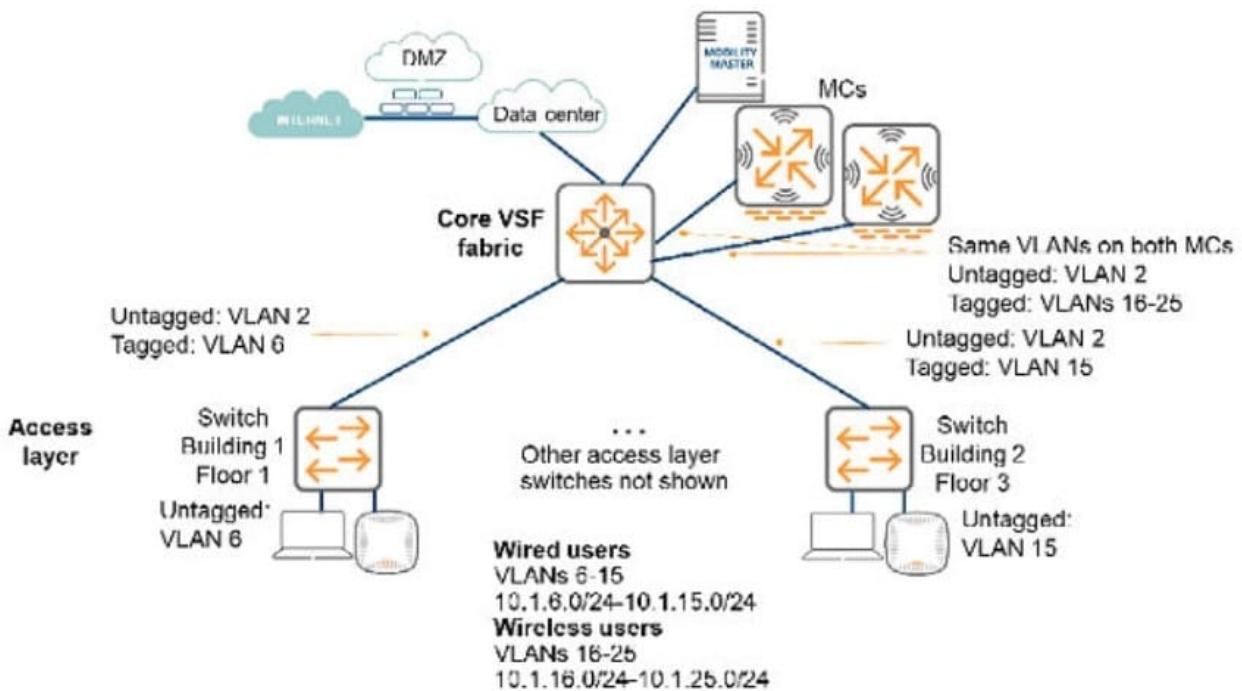
The customer requires the most cost-effective solution that will meet the requirements. What should the network architect recommend for this solution?

- A. 1K + 500 Access licenses; 1K + 500 Guest licenses
- B. 1K + 500 Access licenses; Two 1K Onboard licenses
- C. 1K + 500 Access licenses
- D. Two 1K Guest licenses

Correct Answer: D

**QUESTION 5**

Refer to the exhibit.



A customer needs a wireless network upgrade and has these requirements.

- 
- Support any applications used on a wired connection
- 
- Support up to 2500 wireless clients
- Support seamless roaming from floor to floor and building to building
-

Continue to function seamlessly if one controller fails The architect has designed the logical infrastructure for the network as shown in the exhibit Which change should the architect make to better meet customer requirements and best practices?

A.

Combine the /25 subnets for wireless and wired users into a /16 subnet.

B.

Install additional Mobility Controller.

C.

Combine the /25 subnets for wireless users into a /20 subnet

D.

Place each controller in a different VLAN and subnet.

Correct Answer: B

[Latest HPE6-A80 Dumps](#)

[HPE6-A80 PDF Dumps](#)

[HPE6-A80 Practice Test](#)