

JN0-1301^{Q&As}

Data Center Design, Specialist (JNCDS-DC)

Pass Juniper JN0-1301 Exam with 100% Guarantee

Free Download Real Questions & Answers **PDF** and **VCE** file from:

<https://www.pass2lead.com/jn0-1301.html>

100% Passing Guarantee
100% Money Back Assurance

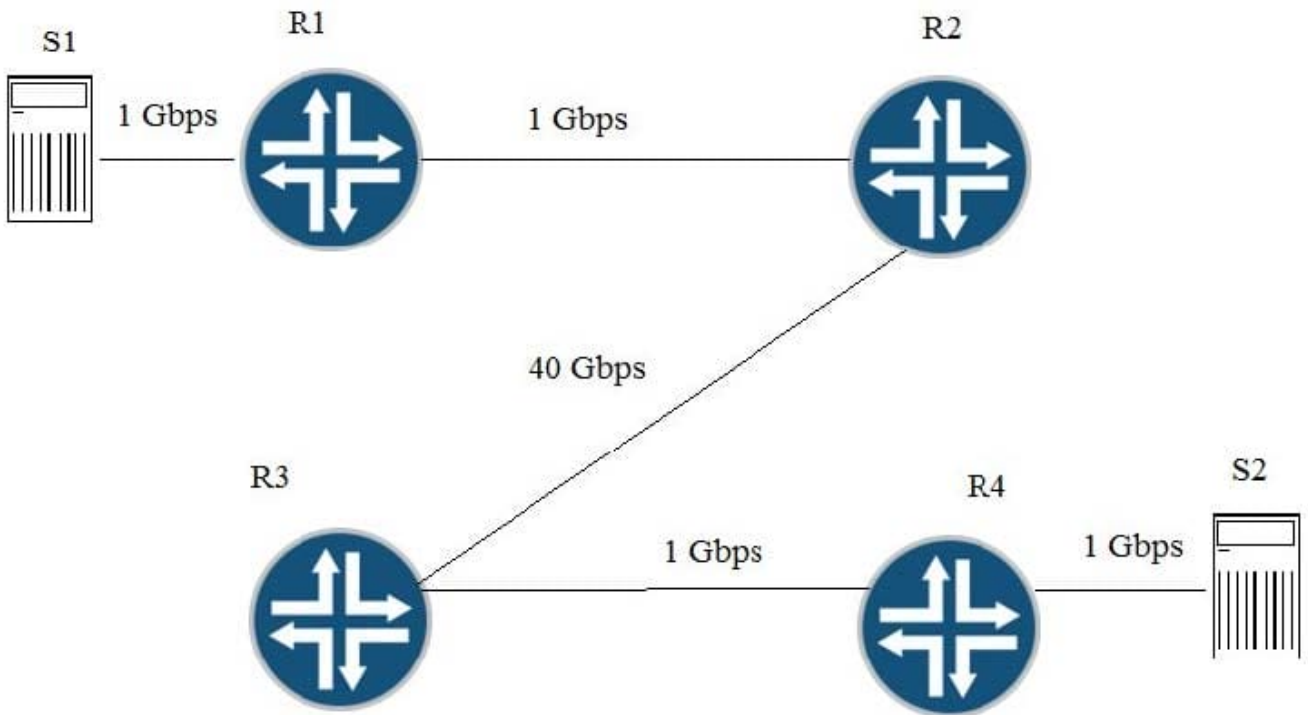
Following Questions and Answers are all new published by Juniper
Official Exam Center

- ⚙️ **Instant Download** After Purchase
- ⚙️ **100% Money Back** Guarantee
- ⚙️ **365 Days** Free Update
- ⚙️ **800,000+** Satisfied Customers



QUESTION 1

Click the Exhibit button. Traffic congestion is noticed when sending traffic from S1 to S2. You must design a CoS deployment to address the traffic congestion issue. Referring to the exhibit, which two statements are true? (Choose two.)



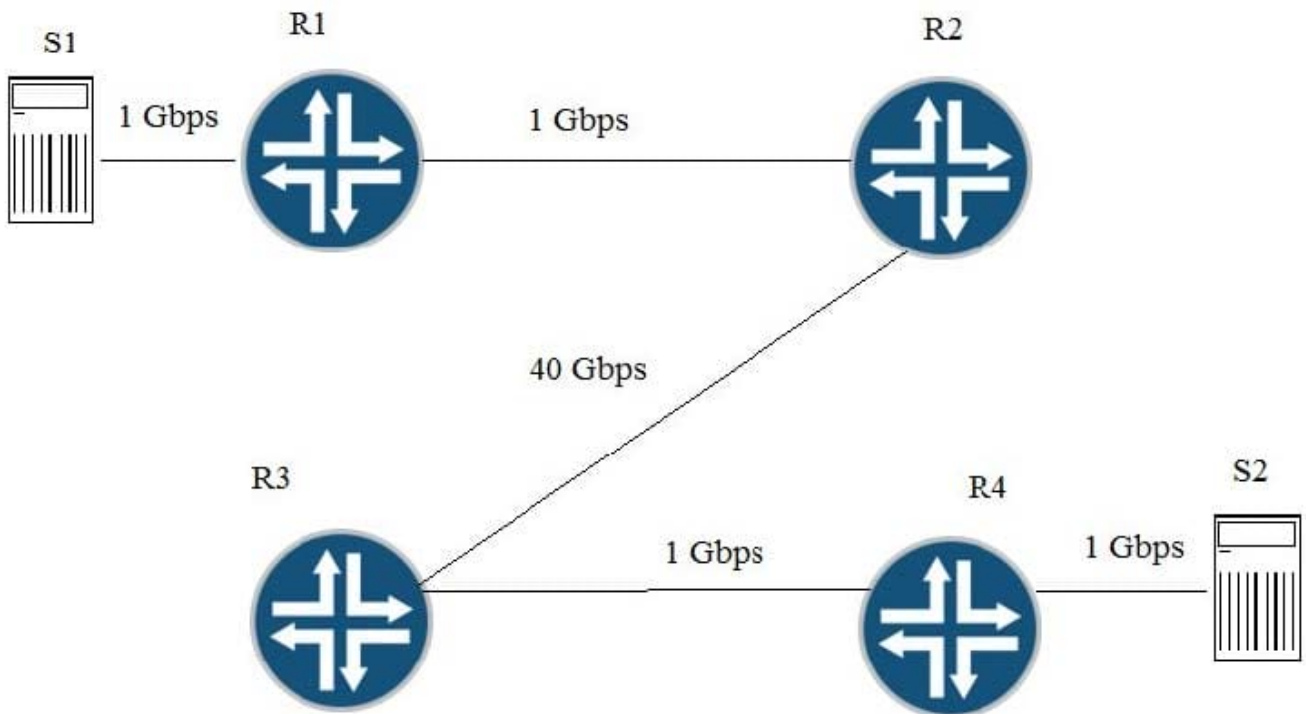
- A. You should use BA classifiers on R1.
- B. You should use multifield classifiers on R2, R3, and R4.
- C. You should use multifield classifiers on R1.
- D. You should use BA classifiers on R2, R3, and R4.

Correct Answer: AB

QUESTION 2

Click the Exhibit button.

Traffic congestion has been noticed when S1 is sending traffic to S2. You must design a CoS deployment to address the traffic congestion issue. Referring to the exhibit, which statement is true?



- A. You should deploy CoS on R1 and R4.
- B. You should deploy CoS on R1, R3 and R4.
- C. You should deploy CoS on S1, R1, R2, R3, R4, and S2.
- D. You should deploy CoS on R1, R2, R3, and R4.

Correct Answer: D

QUESTION 3

Which two statements are true about IP fabrics? (Choose two.)

- A. IP-based applications do not require an overlay network to maintain connectivity.
- B. Applications that require security needs an overlay to provide the security.
- C. Applications that require Layer 2 adjacencies require an overlay network to maintain connectivity.
- D. IP fabrics can natively support both Layer 2 and Layer 3 applications.

Correct Answer: CD

QUESTION 4

You are designing an IP fabric using EVPN with VXLAN and must ensure that all links between the leaf and spine nodes are used as efficiently as possible. Which two design considerations are important to achieve this task? (Choose two.)

- A. Load balancing is automatic in an IP fabric design.
- B. Load balancing must be managed by an SDN controller in an IP fabric design.
- C. The overlay network needs to support load balancing.
- D. The underlay network needs to support load balancing.

Correct Answer: AD

QUESTION 5

From a network management perspective, a Virtual Chassis consisting of five physical switches will appear as how many devices?

- A. 0
- B. 1
- C. 2
- D. 5

Correct Answer: B