

# JN0-212<sup>Q&As</sup>

Cloud-Associate (JNCIA-Cloud)

## Pass Juniper JN0-212 Exam with 100% Guarantee

Free Download Real Questions & Answers **PDF** and **VCE** file from:

<https://www.pass2lead.com/jn0-212.html>

100% Passing Guarantee  
100% Money Back Assurance

Following Questions and Answers are all new published by Juniper  
Official Exam Center

-  **Instant Download** After Purchase
-  **100% Money Back** Guarantee
-  **365 Days** Free Update
-  **800,000+** Satisfied Customers



**QUESTION 1**

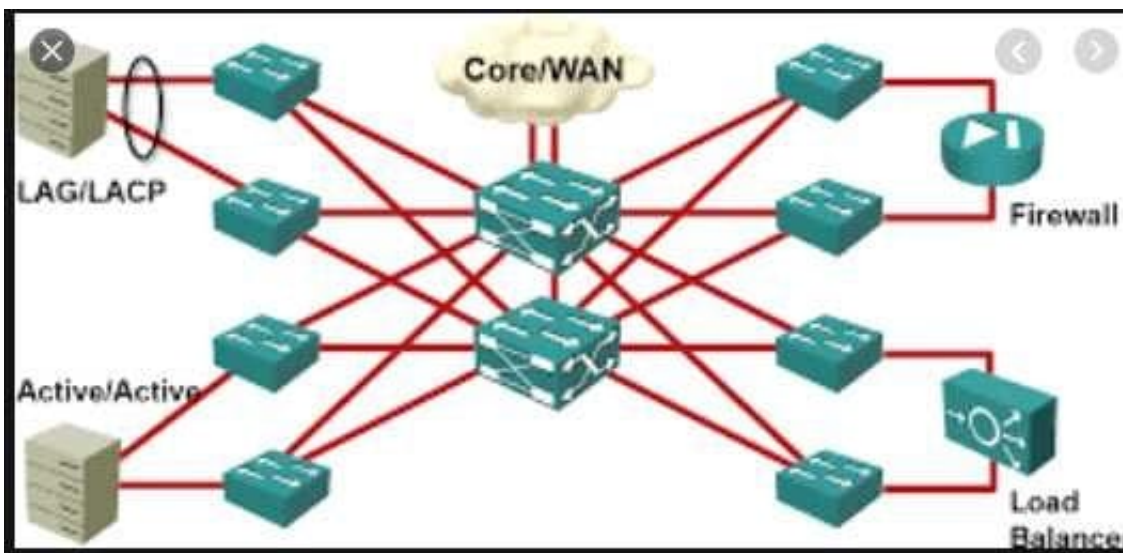
What are two characteristics of cloud computing? (Choose two.)

- A. customer-owned equipment
- B. measured service
- C. resource pooling
- D. unrestricted public access to all resources

Correct Answer: BC

**QUESTION 2**

Exhibit: Which type of the topology is shown in the exhibit?



- A. EGP topology
- B. spine-and-leaf topology
- C. tree topology
- D. hub-and-spoke topology

Correct Answer: B

**QUESTION 3**

Which cloud architecture provides developers a framework on which to develop and customize applications?

- A. DBaaS
- B. PaaS
- C. IaaS
- D. FWaaS

Correct Answer: B

---

#### QUESTION 4

You are deploying a layer 3 underlay network with 10,000 devices and hosts. Which two statements are correct in this scenario? (Choose two.)

- A. Loop prevention is provided by the routing protocol
- B. Routing table can become very large
- C. RSTP can be used for loop prevention
- D. The MAC tables can become very large

Correct Answer: AB

---

#### QUESTION 5

You want to secure sensitive data and detect malware in your network. Which component would be used to satisfy this requirement?

- A. AppFormix
- B. Sky ATP
- C. Network director
- D. Contrail cloud

Correct Answer: C

[JN0-212 Practice Test](#)

[JN0-212 Study Guide](#)

[JN0-212 Braindumps](#)