

JN0-333^{Q&As}

Security, Specialist (JNCIS-SEC)

Pass Juniper JN0-333 Exam with 100% Guarantee

Free Download Real Questions & Answers **PDF** and **VCE** file from:

<https://www.pass2lead.com/jn0-333.html>

100% Passing Guarantee
100% Money Back Assurance

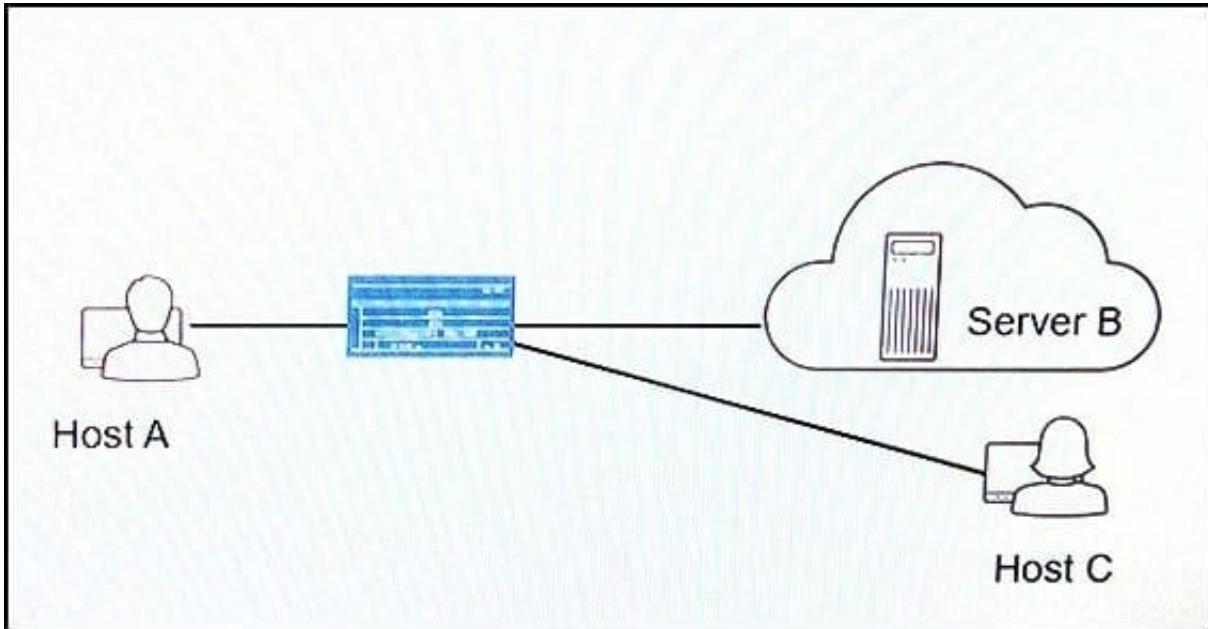
Following Questions and Answers are all new published by Juniper
Official Exam Center

- ⚙️ **Instant Download** After Purchase
- ⚙️ **100% Money Back** Guarantee
- ⚙️ **365 Days** Free Update
- ⚙️ **800,000+** Satisfied Customers



QUESTION 1

Click the Exhibit button.



You have configured NAT on your network so that Host A can communicate with Server B. You want to ensure that Host C can initiate communication with Host A using Host A's reflexive address.

Referring to the exhibit, which parameter should you configure on the SRX Series device to satisfy this requirement?

- A. Configure persistent NAT with the target-host parameter.
- B. Configure persistent NAT with the target-host-port parameter.
- C. Configure persistent NAT with the any-remote-host parameter.
- D. Configure persistent NAT with the port-overloading parameter.

Correct Answer: A

QUESTION 2

You recently configured an IPsec VPN between two SRX Series devices. You notice that the Phase1 negotiation succeeds and the Phase 2 negotiation fails.

Which two configuration parameters should you verify are correct? (Choose two.)

- A. Verify that the IKE gateway proposals on the initiator and responder are the same.
- B. Verify that the VPN tunnel configuration references the correct IKE gateway.
- C. Verify that the IKE initiator is configured for main mode.

D. Verify that the IPsec policy references the correct IKE proposals.

Correct Answer: AB

QUESTION 3

Click the Exhibit button.

```
user#host> show interface ge-0/0/1 extensive | find Zone
Security: Zone: host
Allowed host-inbound traffic: any-service bfd bgp dvmrp icmp ldp madp nhrp
ospf pgm pim rip router-discovery rsvp sap vrrp
Flow Statistics:
Flow Input statistics:
  Self packets: 0
  ICMP packets: 0
  VPN packets: 0
  Multicast packets: 0
  Bytes permitted by policy: 0
  Connections established: 0
Flow Output statistics:
  Multicast packets: 0
  Bytes permitted by policy: 0
Flow error statistics (Packets dropped due to):
  Address spoofing: 0
  Authentication failed: 0
  Incoming NAT errors: 0
  Invalid zone received packet: 0
  Multiple user authentications: 0
  Multiple incoming NAT: 0
  No parent for a gate: 0
  No one interested in self packets: 0
  No minor session: 0
  No more sessions: 0
  No NAT gate: 0
  No route present: 135
  No SA for incoming SPI: 0
  No tunnel found: 0
  No session for a gate: 0
  No zone or NULL zone binding: 0
  Policy denied: 0
  Security associated not active: 0
  TCP sequence number out of window: 0
  Syn-attack protection: 0
  User authentication errors: 0
Protocol inet, MTU: 1500, Generation: 162, Route table: 0
  Flags: Sendbcast-pkt-to-re
  Addresses, Flags: Is-Preferred Is-Primary
    Destination: 5.0.0/24, Local: 5.0.0.5, Broadcast: 5.0.0.255,
    Generation: 158
Protocol iso, MTU: 1497, Generation: 163, Route table: 0
  Flags: Is-Primary
```

Referring to the exhibit, which statement is true?

- A. TCP packets entering the interface are failing the TCP sequence check.
- B. Packets entering the interface are being dropped due to a stateless filter.
- C. Packets entering the interface are getting dropped because there is no route to the destination.
- D. Packets entering the interface matching an ALG are getting dropped.

Correct Answer: C

QUESTION 4

Click the Exhibit button.

```
user@host> show chassis cluster status redundancy-group 1
Cluster: 1, Redundancy-Group: 1
Device name      Priority      Status      Preempt  Manual  failover
node0            0            Secondary   No       No
node1            200          Primary     No       No
```

Which two statements describe the output shown in the exhibit? (Choose two.)

- A. Node 0 is controlling traffic for redundancy group 1.
- B. Node 1 is controlling traffic for redundancy group 1.
- C. Redundancy group 1 experienced an operational failure.
- D. Redundancy group 1 was administratively failed over.

Correct Answer: BD

QUESTION 5

Click the Exhibit button.

You are trying to create a security policy on your SRX Series device that permits HTTP traffic from your private 172.25.11.0/24 subnet to the Internet. You create a policy named ?http between the trust and untrust zones that permits HTTP traffic.

When you issue a commit command to apply the configuration changes, the commit fails with the error shown in the exhibit.

Which two actions would correct the error? (Choose two.)

```
[edit security from-zone trust to-zone untrust]
user@host# show
policy permit-http {
match {
source-address 172.25.11.0/24;
destination-address any;
application http;
}
then {
permit;
}
}

[edit security policies from-zone trust to-zone untrust]
user@host# commit
[edit security policies from-zone trust to-zone untrust policy
permit-http match application]
'http'
application or application-set must be defined
error: commit failed: (statements constraint check failed)
```

- A. Create a custom application named http at the [edit applications] hierarchy.
- B. Execute the Junos commit full command to override the error and apply the configuration.
- C. Modify the security policy to use the built-in junos-http application.
- D. Issue the rollback 1 command from the top of the configuration hierarchy and attempt the commit again.

Correct Answer: BC

[JN0-333 PDF Dumps](#)

[JN0-333 Study Guide](#)

[JN0-333 Braindumps](#)