

# JN0-649<sup>Q&As</sup>

Enterprise Routing and Switching Professional (JNCIP-ENT)

## Pass Juniper JN0-649 Exam with 100% Guarantee

Free Download Real Questions & Answers **PDF** and **VCE** file from:

<https://www.pass2lead.com/jn0-649.html>

100% Passing Guarantee  
100% Money Back Assurance

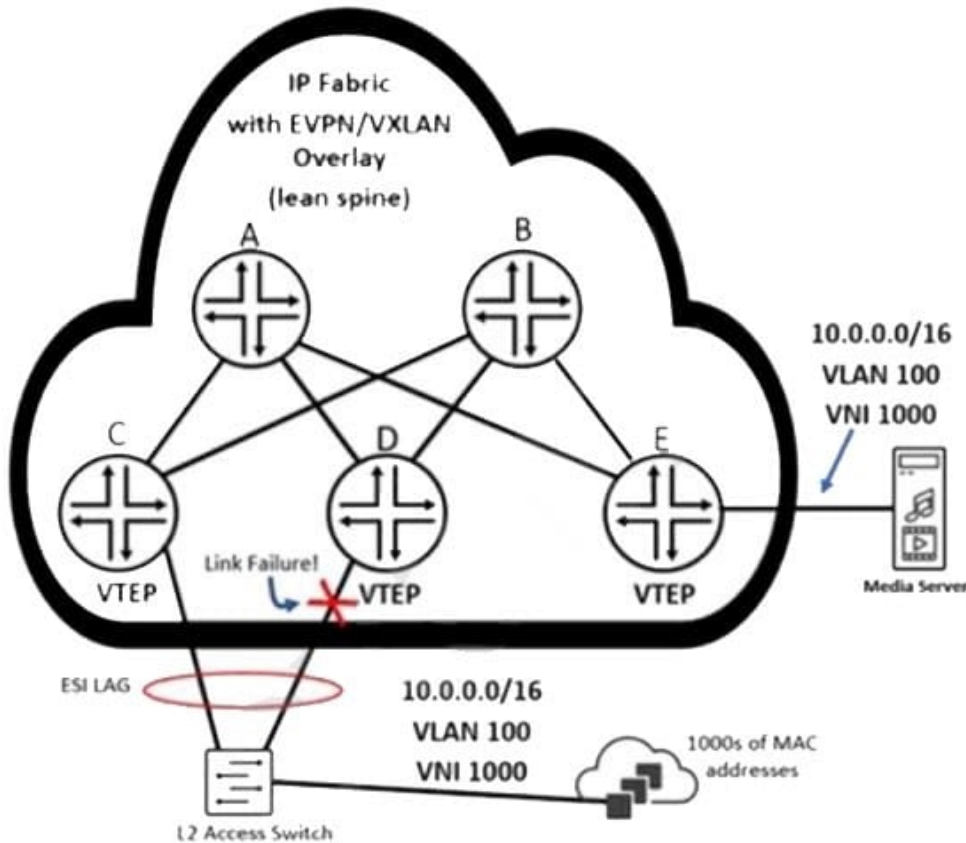
Following Questions and Answers are all new published by Juniper  
Official Exam Center

- ⚙️ **Instant Download** After Purchase
- ⚙️ **100% Money Back** Guarantee
- ⚙️ **365 Days** Free Update
- ⚙️ **800,000+** Satisfied Customers



**QUESTION 1**

Referring to the exhibit, how will router E quickly learn that the remote MAC addresses are no longer reachable through the router attached to the failed link?



- A. Router E receives Type 2 withdrawal messages from router D.
- B. Router E receives Type 1 withdrawal messages from router D.
- C. Router E receives Type 1 withdrawal messages from router C.
- D. Router E receives Type 2 withdrawal messages from router C.

Correct Answer: B

**QUESTION 2**

You are deploying IP phones in your enterprise networks. When plugged in, the IP phones must be automatically provided with the correct VLAN ID needed for sending voice traffic to the EX Series switches.

In this scenario, which two solutions are required to accomplish this task? (Choose two.)

- A. Enable LLDP-MED on appropriate access interfaces.

- B. Create two VLANs and assign them as VLAN members to the appropriate access interfaces.
- C. Enable the voice VLAN feature with the appropriate access interfaces and VLAN ID for voice traffic.
- D. Use LLDP on appropriate interfaces.

Correct Answer: AC

---

### QUESTION 3

Your enterprise network is running BGP VPNs to support multitenancy. Some of the devices with which you peer BGP do not support the VPN NLRI. You must ensure that you do not send BGP VPN routes to the remote peer.

Which two configuration steps will satisfy this requirement? (Choose two.)

- A. Configure an import policy on the remote peer to reject the routes when they are received.
- B. Configure an export policy on the local BGP peer to reject the VPN routes being sent to the remote peer.
- C. Configure a route reflector for the VPN NLRI.
- D. Configure the apply-vpn-export feature on the local BGP peer.

Correct Answer: BD

Apply both the VRF export and BGP group or neighbor export policies (VRF first, then BGP) before routes from the vrf or l2vpn routing tables are advertised to other PE routers. <https://www.juniper.net/documentation/us/en/software/junos/bg/topics/ref/statement/vpn-apply-export-edit-protocols-bgp-vp.html>

---

### QUESTION 4

Referring to the exhibit, which two statements are correct? (Choosetwo.)

```
user@router> show bgp neighbor 192.168.100.2
Peer: 192.168.100.2+179 AS 65000 Local: 192.168.100.1+58355 AS 65000
  Group: overlay          Routing-Instance: master
  Forwarding routing-instance: master
  Type: Internal      State: Established (route reflector client)Flags: <Sync>
  Last State: OpenConfirm  Last Event: RecvKeepAlive
  Last Error: None
  Options: <LocalAddress Cluster AddressFamily Multipath Rib-group Refresh>
  Options: <GracefulShutdownRcv>
  Address families configured: evpn
  Local Address: 192.168.100.1 Holdtime: 90 Preference: 170
  Graceful Shutdown Receiver local-preference: 0
  Number of flaps: 0
  Peer ID: 192.168.100.2  Local ID: 192.168.100.1  Active Holdtime: 90
  Keepalive Interval: 30  Group index: 2  Peer index: 3  SNMP index: 10
  I/O Session Thread: bgpio-0 State: Enabled
  BFD: disabled, down
  NLRI for restart configured on peer: evpn
  NLRI advertised by peer: evpn
  NLRI for this session: evpn
  Peer supports Refresh capability (2)
  Stale routes from peer are kept for: 300
  Peer does not support Restarter functionality
  Restart flag received from the peer: Notification
  NLRI that restart is negotiated for: evpn
  NLRI of received end-of-rib markers: evpn
  NLRI of all end-of-rib markers sent: evpn
  Peer does not support LLGR Restarter functionality

  I/O Session Thread: bgpio-0 State: Enabled
  BFD: disabled, down
  NLRI for restart configured on peer: evpn
  NLRI advertised by peer: evpn
  NLRI for this session: evpn
  Peer supports Refresh capability (2)
  Stale routes from peer are kept for: 300
  Peer does not support Restarter functionality
  Restart flag received from the peer: Notification
  NLRI that restart is negotiated for: evpn
  NLRI of received end-of-rib markers: evpn
  NLRI of all end-of-rib markers sent: evpn
  Peer does not support LLGR Restarter functionality
  Peer supports 4 byte AS extension (peer-as 65000)
  Peer does not support Addpath
  NLRI(s) enabled for color nexthop resolution: evpn
Table bgp.evpn.0 Bit: 20000
  RIB State: BGP restart is complete
  RIB State: VPN restart is complete
  Send state: in sync
  Active prefixes:          0
  Received prefixes:       0
  Accepted prefixes:       0
  Suppressed due to damping: 0
  Advertised prefixes:     15
Last traffic (seconds): Received 9  Sent 20  Checked 91232
Input messages:  Total 3335  Updates 16  Refreshes 0  Octets 64872
Output messages: Total 3335  Updates 15  Refreshes 0  Octets 64872
Output Queue[1]: 0 (bgp.evpn.0, evpn)
```

- A. The BGP neighbor can advertise L3 VPN related routes.
- B. The BGP neighbor cannot advertise EVPN related routes.
- C. The BGP neighbor can advertise EVPN related routes.
- D. The BGP neighbor cannot advertise L3 VPN related routes.

Correct Answer: AC

---

#### QUESTION 5

When using wide metrics, which two statements about route advertisement between IS-IS levels are correct? (Choose two.)

- A. Level 1 and Level 2 routers do not advertise Level 2 routes into the Level 1 area by default.
- B. Level 1 routes are advertised to Level 2 routers by default.
- C. If wide-metrics-only is configured, Level 1 routes are not advertised to Level 2 routers by default.
- D. Level 1 routes advertised as external routes into Level 1 are not advertised to any Level 2 routers by default.

Correct Answer: AC

[Latest JN0-649 Dumps](#)

[JN0-649 VCE Dumps](#)

[JN0-649 Study Guide](#)