

# JPR-934<sup>Q&As</sup>

Security, Expert (JNCIE-SEC)

## Pass Juniper JPR-934 Exam with 100% Guarantee

Free Download Real Questions & Answers **PDF** and **VCE** file from:

<https://www.pass2lead.com/jpr-934.html>

100% Passing Guarantee  
100% Money Back Assurance

Following Questions and Answers are all new published by Juniper  
Official Exam Center

-  **Instant Download** After Purchase
-  **100% Money Back** Guarantee
-  **365 Days** Free Update
-  **800,000+** Satisfied Customers



### QUESTION 1

You work as the network administrator at ABC.com. The ABC.com network consists of a domain named ABC.com. The servers at the ABC.com network run Windows Server.

The ABC.com network has a Web server named ABC-SR11. During a routine monitoring you notice an increase in network traffic. Due to this you need to find out the MAC address of the workstation that initiated the transfers and the command that was used. However, your action must not affect ABC-SR11.

What actions must you take?

- A. You must run the ipconfig/registerdns.
- B. You must use the Netmon utility.
- C. You must capture the IP traffic to ABC-SR11.
- D. You must Enable Server Message Block (SMB) signing on all the workstations.

Correct Answer: C

---

### QUESTION 2

The ABC.com network consists of a single Active Directory domain named ABC.com. ABC.com has its headquarters in Chicago and several branch offices at various locations throughout the country. All servers on the ABC.com network run Windows Server.

You are in the process of configuring a VPN connection between the Chicago office and a branch office in Dallas using Windows Server computers running Routing and Remote Access (RRAS).

A ABC.com written security policy states that the requirements below must be met:

Data transmitted over the VPN must be encrypted with end to end encryption.

The VPN connection authentication should be at the computer level rather than at user level and with no credential information transmitted over the internet.

How should you configure the VPN? (Choose two.)

- A. Use a PPTP connection.
- B. Use EAP-TLS authentication.
- C. Use a PPP connection.
- D. Use MS-CHAP v2 authentication.
- E. Use MS-CHAP authentication.
- F. Use PAP authentication.
- G. Use an L2TP/IPSec connection.

Correct Answer: BG

**QUESTION 3**

Your IT Director has been reading again. He has decided that he wants to convert the network to OSPF, but he is having some difficulty with terminology. He knows that an OSPF router can serve one of four roles. His problem is that he can't remember which role exists when one of the router's interfaces is on the backbone area. Help him out.

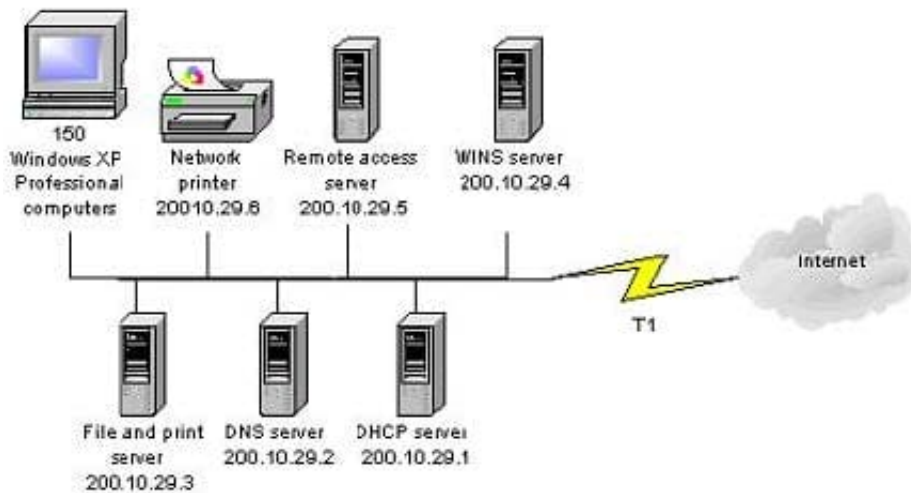
Which of the following is it?

- A. Internal router
- B. Area border router
- C. Backbone router
- D. Autonomous system boundary router

Correct Answer: C

**QUESTION 4**

You are one of the administrators for your company's Windows Server network. The relevant portion of the network is presented in the following exhibit.



All servers, client computers and one network print device are currently configured with static IP addresses. The network IP address is 200.10.29.0. A DHCP server has been deployed but has not yet been configured. You must configure a

new scope that will provide the existing client computers with IP configurations. The new scope should support an additional 25 new client computers that will be deployed within the next two months.

Which settings should be included in the new DHCP scope? Each correct answer presents part of the solution. (Choose three.)

- A. subnet mask: 255.255.255.0

B. subnet mask: 255.255.255.128

C. DHCP scope starting IP address: 200.10.29.7 DHCP scope ending IP address: 200.10.29.254

D. DHCP scope starting IP address: 200.10.29.1 DHCP scope ending IP address: 200.10.29.254

E. DHCP scope exclusion range starting IP address: 200.10.29.1 DHCP scope exclusion range ending IP address: 200.10.29.6

F. DHCP scope exclusion range starting IP address: 200.10.29.1 DHCP scope exclusion range ending IP address: 200.10.29.254

Correct Answer: ADE

---

### QUESTION 5

You are proposing the purchase of a new e-mail server for your corporate network. You have specified a new server from a major OEM manufacturer that is configured with a powerful quad-processor configuration, hot-swappable hard drives, and redundant power supplies and network adapters, with a three-year onsite warranty. Due to a budget crunch, the chairperson of the budget committee has suggested that the company can make do with a less powerful workgroup server from a local computer store. This server has only a single processor and no redundancy features, and a one-year onsite warranty. What reasons can you provide the budget committee members that might convince them to authorize the purchase of the server that you specified, even though it has a higher price tag?

A. A more powerful server will provide better performance and scalability as the company's needs grow over time.

B. Redundant hardware components will increase the server's availability to service the needs of the company's users and customers.

C. The extended warranty on the more powerful server will increase support costs over time, since you're paying to cover the machine under warranty for three times as long.

D. Windows Server requires at least a dual-processor configuration.

Correct Answer: AB

[JPR-934 VCE Dumps](#)

[JPR-934 Study Guide](#)

[JPR-934 Braindumps](#)