



MB6-704^{Q&As}

Microsoft Dynamics AX 2012 R3 CU8 Development Introduction

Pass Microsoft MB6-704 Exam with 100% Guarantee

Free Download Real Questions & Answers **PDF** and **VCE** file from:

<https://www.pass4lead.com/mb6-704.html>

100% Passing Guarantee
100% Money Back Assurance

Following Questions and Answers are all new published by Microsoft
Official Exam Center

-  **Instant Download** After Purchase
-  **100% Money Back** Guarantee
-  **365 Days** Free Update
-  **800,000+** Satisfied Customers





QUESTION 1

You have the following X++ code that contains an SQL statement:

```
Connection userConnection;  
Statement stmt;  
Str sqlString;  
Resultset results;  
  
userConnection = new Connection();  
stmt = userConnection.createStatement();  
sqlString = "select * from salesTable";  
new SqlStatementExecutePermission(sqlString).assert();  
results = stmt.executeQuery(sqlString);  
CodeAccessPermission::revertAssert();
```

Which two statements accurately describe the code? Each correct answer presents a complete solution.

- A. The code does not enforce field-level security.
- B. The results variable only contains data from the partition in to which the user is logged.
- C. The code does not enforce row-level security.
- D. The results variable only contains data from the legal entity in to which the user is logged.

Correct Answer: CD

C: Record level security is not enforced on the Statement class. If data is exposed to the user, perform explicit security validation.

Note: * ::revertAssert

Causes a previous call to the CodeAccessPermission.assert and CodeAccessPermission::assert- Multiple methods to be removed and no longer in effect.

Reference: Statement.executeQuery Method [AX 2012]

If users control input to the executeQuery method, an SQL injection threat can occur. Therefore, this method runs under Code Access Security.

QUESTION 2

Which three tasks are performed by an Application Object Server (AOS)? Each correct answer presents a complete solution.

- A. Manages client sessions
- B. Stores the Dynamic AX models
- C. Enforces security for Dynamic AX data and features
- D. Runs the X++ code



E. Hosts help files

Correct Answer: ABD

An Application Object Server (AOS) is a core component of the Microsoft Dynamics AX 2012 installation and is installed by using Setup. An AOS enforces security, manages connections between clients and the database, and provides the foundation where Microsoft Dynamics AX business logic is executed.

The following diagram shows the AOS architecture.

Reference: Application Object Servers [AX 2012]; AOS architecture [AX 2012]

QUESTION 3

You are developing a solution to get a date as an input to perform an operation. The input will be in a variable named input Date.

You need to validate the date and throw an error if the date entered is null or greater than the current system date.

Which X++ statement should you use?

Exhibit A

```
If(InputDate != datenull())  
{  
    Throw error("Wrong selection of date");  
}  
If(inputDate > systemDateGet())  
{  
    Throw error("Wrong selection of date");  
}
```

Pass4Lead.com

Exhibit B

```
If(InputDate != datenull())  
{  
    Throw error("Wrong selection of date");  
}  
Else If(inputDate > systemDateGet())  
{  
    Throw error("Wrong selection of date");  
}
```

Pass4Lead.com

Exhibit C

```
If(InputDate != datenull())  
{  
    Throw error("Wrong selection of date");  
    If(inputDate > systemDateGet())  
    {  
        Throw error("Wrong selection of date");  
    }  
}
```

Pass4Lead.com



Exhibit D

```
If(InputDate == datenull() || InputDate > systemDateGet())  
{  
    Throw error("Wrong selection of date");  
}
```

- A. Exhibit A
- B. Exhibit B
- C. Exhibit C
- D. Exhibit D

Correct Answer: D

|| is logical Or. Works fine here.

Incorrect:

Not A, Not B, Not C:

!= is not equal.

Reference: Relational Operators [AX 2012]

QUESTION 4

You need to develop a solution to process accounts receivable. The solution must halt the process and display a message if the process starts before the last day of the month. The process must resume once the user acknowledges the message.

Which communication statement should you use?

- A. Warning ("This process should only be started on the last day of the month");
- B. Info ("This process should only be started on the last day of the month");
- C. Box: warning ("This process should only be started on the last day of the month");
- D. Error ("This process should only be started on the last day of the month");
- E. Print "This process should only be started on the last day of the month";

Correct Answer: C

You can display a message in a modal dialog box by using the Box class.

Box class static method name: warning

The OK button is the only one displayed in the dialog box. Use this dialog box for a warning message.

Example: diagBut = Box::Warning(



strMessage,

DialogButton::No, // Initial focus is on the No button.

strTitle);

Reference: Displaying a Message Box [AX 2012]

Incorrect:

Not B: The info method displays text in the Infolog window. Not E: X++ provides a print statement that allows you to display text or selected results in a temporary window. The messages are displayed in a Print window that appears when

the first print statement is executed.

QUESTION 5

You have a menu item named menu item I that is used to launch a form named Form I by using the rich client.

You need to ensure that users who are granted the Maintain customer addresses privilege can use menu item I to open Form I in read mode.

What should you do?

- A. Set menu item I to run on the server. Modify the Enabled property of the Maintain customer addresses privilege.
- B. Create an entry point for the Maintain customer addresses privilege. Set the Access Level property of the entry point
- C. Create an entry point for the Maintain customer addresses privilege. Add Form I to the Maintain customer addresses privilege.
- D. Set menu item I to run on the server. Add Form I to the Maintain customer addresses privilege.

Correct Answer: B

*

The developer does the following: Creates a form and a menu item for a form. Creates a privilege and an entry point.

Creates a test role for the application user.

*

(see 4d below)

Create a Privilege and an Entry Point

You can create a privilege and an entry point for MyMenuItem by following these steps:

1.

Create a privilege that is named MyNewPrivilege.

2.



Expand AOT > Security > Privileges > MyNewPrivilege.

3.

Add an entry point that is named MyNewEntryPoint. You do this by right-clicking the Entry Points node, and then clicking New Entry Point.

4.

In the Properties window for the new entry point, do the following:

a.

Set the Name property to MyNewEntryPoint.

b.

Make the ObjectType of the entry point be MenuItemDisplay. c. Make the ObjectName of the entry point be MyMenuItem.

d.

Set the AccessLevel of the entry point to Read.

* Example:

Create a Test Role

To properly test your form as an application user, you must create a test role. You can create a test role by following these steps:

1.

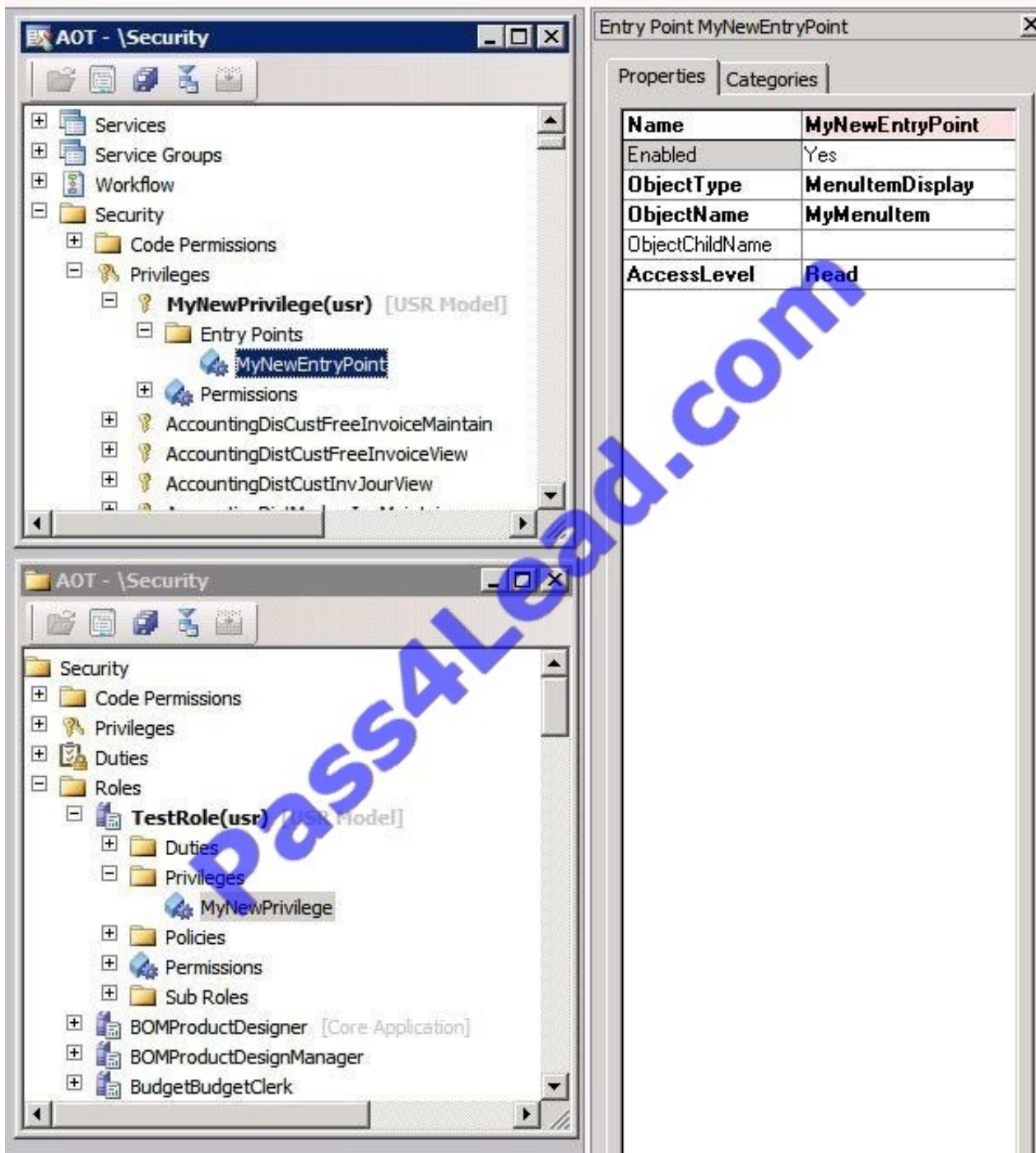
Create a test role for an application user that is named TestRole.

2.

Expand AOT > Security > Roles > TestRole > Privileges.

3.

Add MyNewPrivilege privilege to the Privileges node of TestRole. The following figure shows a test role with a privilege that you create in this walkthrough.



Reference: Walkthrough: Using Roles and Privileges to Control Access to Forms [AX 2012]

[MB6-704 PDF Dumps](#)

[MB6-704 Exam Questions](#)

[MB6-704 Brindumps](#)



To Read the [Whole Q&As](#), please purchase the [Complete Version](#) from [Our website](#).

Try our product !

100% Guaranteed Success

100% Money Back Guarantee

365 Days Free Update

Instant Download After Purchase

24x7 Customer Support

Average 99.9% Success Rate

More than 800,000 Satisfied Customers Worldwide

Multi-Platform capabilities - [Windows](#), [Mac](#), [Android](#), [iPhone](#), [iPod](#), [iPad](#), [Kindle](#)

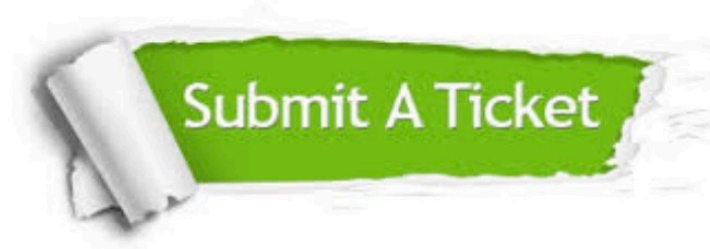
We provide exam PDF and VCE of Cisco, Microsoft, IBM, CompTIA, Oracle and other IT Certifications. You can view Vendor list of All Certification Exams offered:

<https://www.pass4lead.com/allproducts>

Need Help

Please provide as much detail as possible so we can best assist you.

To update a previously submitted ticket:



 <p>One Year Free Update Free update is available within One Year after your purchase. After One Year, you will get 50% discounts for updating. And we are proud to boast a 24/7 efficient Customer Support system via Email.</p>	 <p>Money Back Guarantee To ensure that you are spending on quality products, we provide 100% money back guarantee for 30 days from the date of purchase.</p>	 <p>Security & Privacy We respect customer privacy. We use McAfee's security service to provide you with utmost security for your personal information & peace of mind.</p>
---	---	--

Any charges made through this site will appear as Global Simulators Limited.

All trademarks are the property of their respective owners.

Copyright © pass4lead, All Rights Reserved.