

MCD-LEVEL1^{Q&As}

MuleSoft Certified Developer - Level 1 (Mule 4)

Pass Mulesoft MCD-LEVEL1 Exam with 100% Guarantee

Free Download Real Questions & Answers **PDF** and **VCE** file from:

<https://www.pass2lead.com/mcd-level1.html>

100% Passing Guarantee
100% Money Back Assurance

Following Questions and Answers are all new published by Mulesoft
Official Exam Center

- ⚙️ **Instant Download** After Purchase
- ⚙️ **100% Money Back** Guarantee
- ⚙️ **365 Days** Free Update
- ⚙️ **800,000+** Satisfied Customers



QUESTION 1

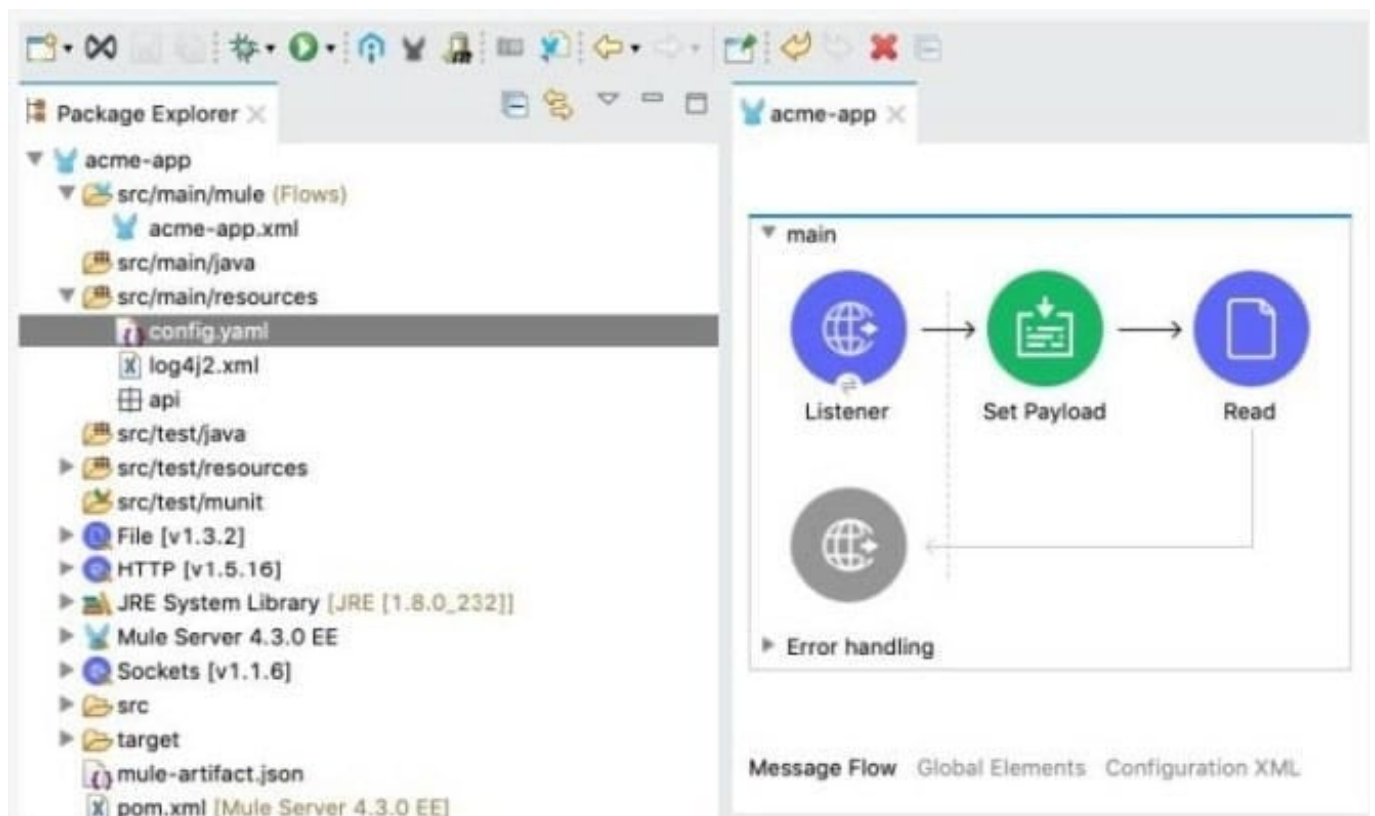
What is the output type of the DataWeave map operator?

- A. String
- B. Array
- C. Map
- D. Object

Correct Answer: B

QUESTION 2

Refer to the exhibit.



The Mule application's connectors are configured with property placeholders whose values are set in the config.yaml file. What must be added to the Mule application to link the config.yaml file's values with the property placeholders?

- A. A configuration-properties element in the acme-app.xml file
- B. A dependency element in the pom.xml file
- C. A file-config element in the acme-app.xml file

D. A propertiesFile key/value pair in the mule-artifact json file

Correct Answer: A

QUESTION 3

Does a root element required when creating a XML response using Dataweave?

A. Depends on requirement

B. Not required

C. Always required

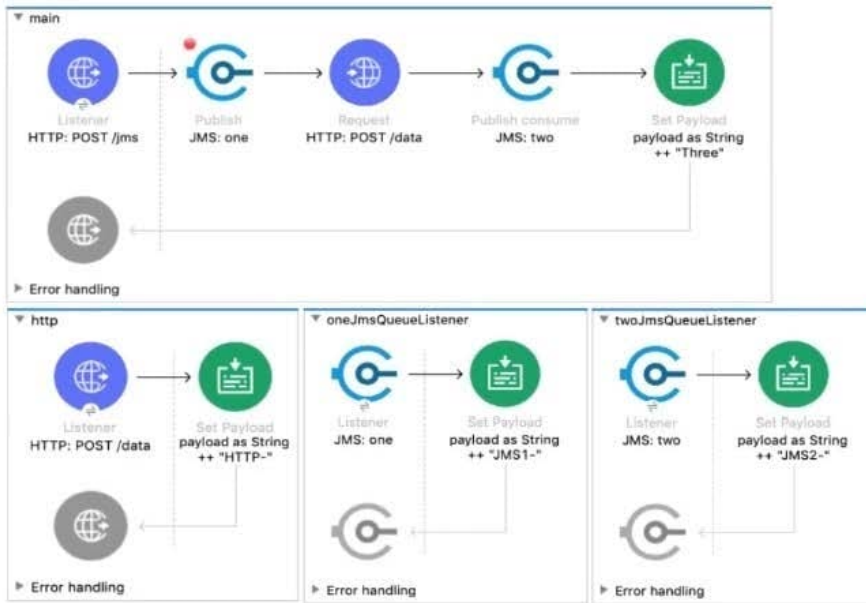
D. None of these

Correct Answer: C

Root element is always required while creating XML response in DataWeave transformation

QUESTION 4

Refer to the exhibits.



```
<flow name="main">
  <http:listener doc:name="HTTP: POST /jms" config-ref="HTTP_Listener_config" path="/jms" />
  <jms:publish doc:name="JMS: one" config-ref="JMS_Config" destination="one" >
    <jms:message outboundContentType="text/plain" />
  </jms:publish>
  <http:request method="POST" doc:name="HTTP: POST /data" url="http://localhost:8081/data"/>
  <jms:publish-consume doc:name="JMS: two" config-ref="JMS_Config" destination="two">
    <jms:message outboundContentType="text/plain" />
  </jms:publish-consume>
  <set-payload value="#[payload ++ "Three"]" doc:name='payload as String ++ "Three"' />
</flow>
```

A web client sends a POST request to the HTTP Listener with the payload "Hello-". What response is returned to the web client? What response is returned to the web client?

- A. Hello- HTTP-] MS2-Three B. HTTP-JMS2-Three
- C. Helb-JMS1-HTTP-JMS2 -Three
- D. Hello-HTTP-Three

Correct Answer: A

QUESTION 5

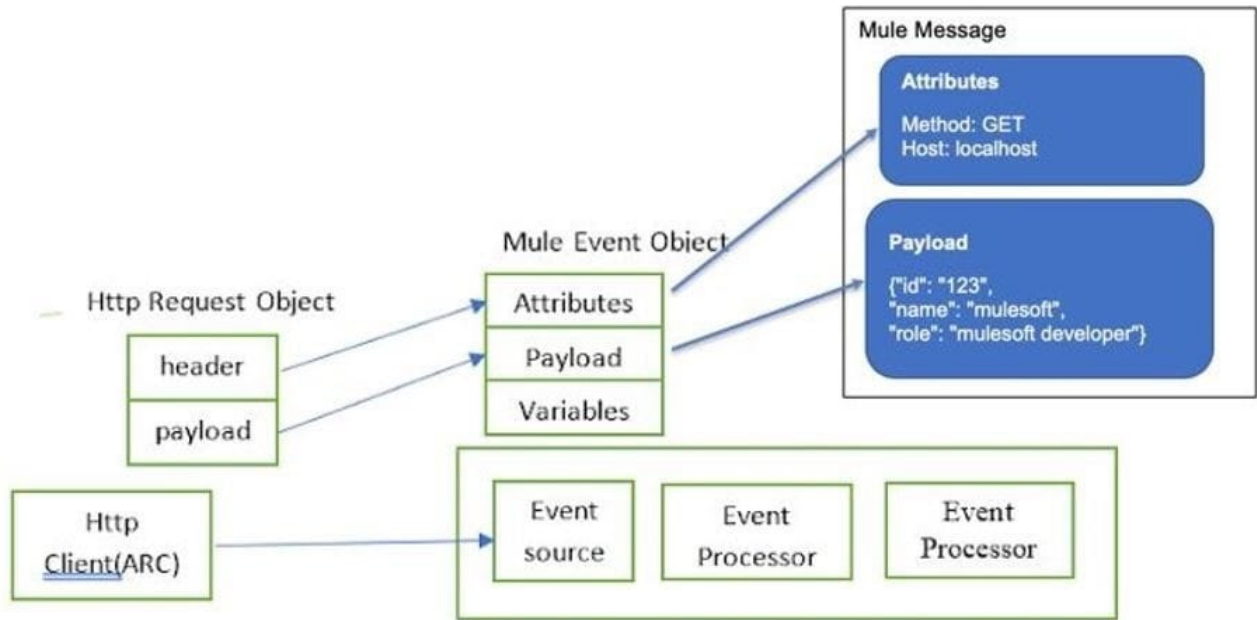
Where are values of query parameters stored in the Mule event by the HTTP Listener?

- A. Inbound Properties
- B. Variables
- C. Attributes
- D. Payload

Correct Answer: C

Correct answer is Attributes.

Query parameters , URI parameters and headers are some of examples which are part of attributes.



[Latest MCD-LEVEL1 Dumps](#)

[MCD-LEVEL1 VCE Dumps](#)

[MCD-LEVEL1 Exam Questions](#)