

NS0-161^{Q&As}

NetApp Certified Data Administrator, ONTAP

Pass NetApp NS0-161 Exam with 100% Guarantee

Free Download Real Questions & Answers **PDF** and **VCE** file from:

<https://www.pass2lead.com/ns0-161.html>

100% Passing Guarantee
100% Money Back Assurance

Following Questions and Answers are all new published by NetApp
Official Exam Center

- ⚙️ **Instant Download** After Purchase
- ⚙️ **100% Money Back** Guarantee
- ⚙️ **365 Days** Free Update
- ⚙️ **800,000+** Satisfied Customers



QUESTION 1

Your company requires that all data must be encrypted in flight to prevent data from falling into the wrong hands.

What are two ways to accomplish this task? (Choose two.)

- A. Ensure that SnapMirror compression is enabled in all SnapMirror relationships.
- B. Modify your cluster peering relationships to support cluster peering encryption.
- C. Enable Multi-Factor Authentication (MFA) for your SnapMirror relationships.
- D. Ensure that all intercluster replication traffic is done through a VPN tunnel.

Correct Answer: BC

QUESTION 2

What is the default RAID policy for aggregates created with 10 TB disk drives? (Choose the best answer.)

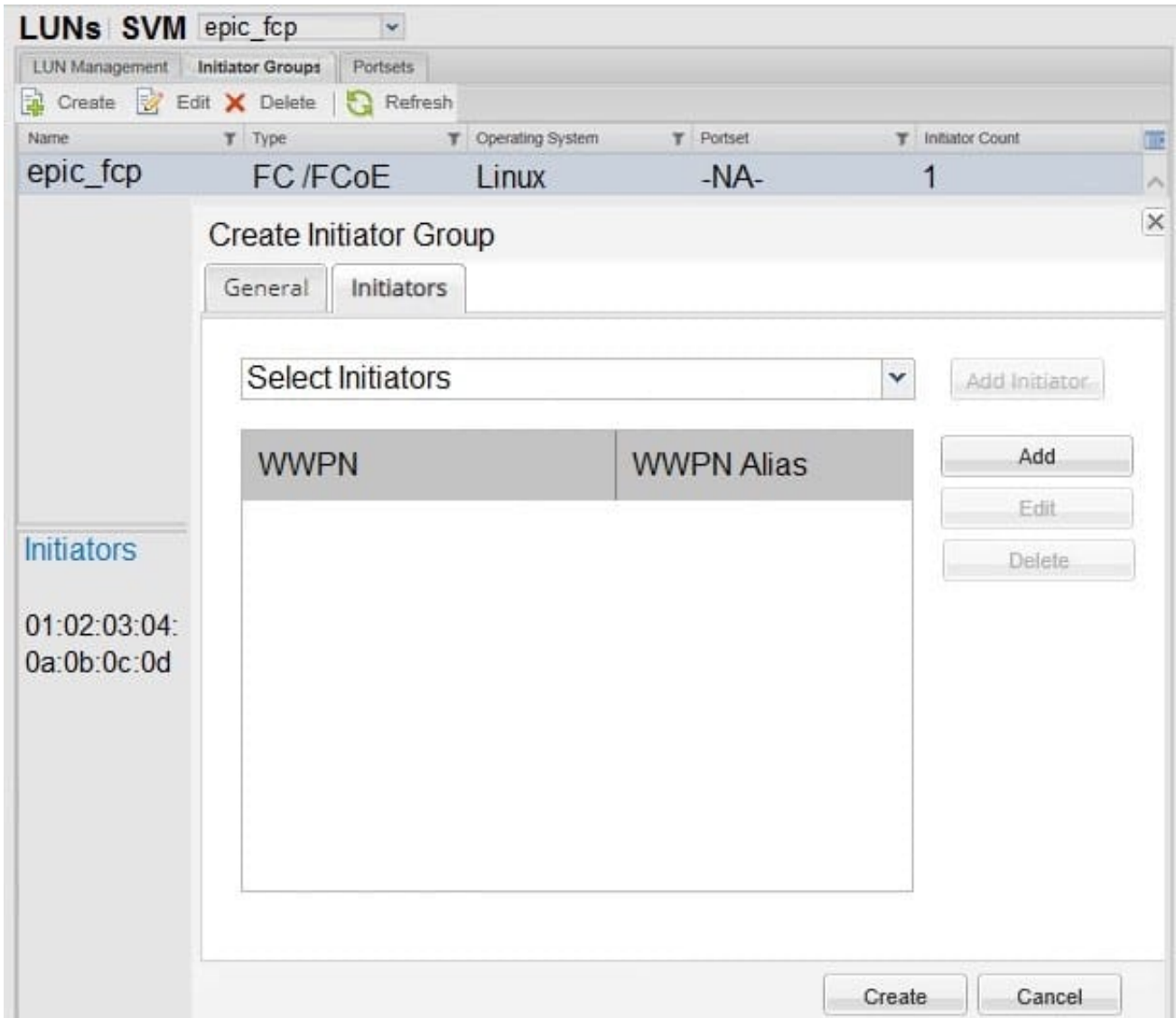
- A. RAID4
- B. RAID-DP
- C. RAID0
- D. RAID-TEC

Correct Answer: D

Reference: <https://docs.netapp.com/ontap-9/topic/com.netapp.doc.dot-cm-psmg/GUID-2808F15F-60574E43-9407-5B3CA274E6C5.html>

QUESTION 3

Click the Exhibit button.



Referring to the exhibit, what are two reasons why no initiators are displayed in the initiators\ igroup screen? (Choose two.)

- A. Zoning on the switches has been done incorrectly.
- B. The server has not been powered up.
- C. ALUA has not been enabled on the NetApp controllers.
- D. SLM has not been enabled.

Correct Answer: AB

QUESTION 4

Click the Exhibit button.

```
cluster1::> volume show -vserver vs2 -is-constituent *
Vserver  Volume  Aggregate  State  Type  Size  Available  Used%
-----
vs2      fg1      -          online RW    200TB  76TB      62%
vs2      fg1_0001 aggr1      online RW    25TB   10MB      99%
vs2      fg1_0002 aggr2      online RW    25TB   12TB      52%
vs2      fg1_0003 aggr1      online RW    25TB   10TB      60%
vs2      fg1_0004 aggr2      online RW    25TB   11TB      60%
vs2      fg1_0005 aggr1      online RW    25TB   10TB      56%
vs2      fg1_0006 aggr2      online RW    25TB   12TB      52%
vs2      fg1_0007 aggr1      online RW    25TB   10TB      60%
vs2      fg1_0008 aggr2      online RW    25TB   11TB      56%
```

```
cluster1::> aggr show
Aggregate  Size  Available  Used%  State  #Vols  Nodes  RAID Status
-----
aggr1      300TB  103.71TB  65%    online  30     cluster1-01  raid_dp, normal
aggr0_root 368.4GB 15.83GB   96%    online  1     cluster1-02  raid_dp, normal
aggr2      300TB  176.51TB  41%    online  25     cluster1-02  raid_dp, normal
aggr0_root 368.4GB 15.83GB   96%    online  1     cluster1-01  raid_dp, normal
4 entries were displayed
```

You have an ONTAP cluster that is running a FlexGroup that is serving SMB data out to various users. One of the users receives an error when trying to modify an existing file.

What is the cause of the problem? (Choose the best answer.)

- A. The FlexGroup is full
- B. The constituent is full
- C. The FlexGroup is offline
- D. The aggregate is full

Correct Answer: B

QUESTION 5

You are asked to create a new SVM to serve SMB data using Active Directory authentication. Which two requirements must be satisfied prior to serving data? (Choose two.)

- A. DNS must be enabled and configured correctly.
- B. The CIFS license must be installed on the storage system.
- C. An intercluster LIF must be created for serving SMB data.
- D. An administrative user must be created for the SMB SVM.

Correct Answer: AC