

NS0-509^{Q&As}

NetApp Certified Implementation Engineer - SAN - ONTAP

Pass NetApp NS0-509 Exam with 100% Guarantee

Free Download Real Questions & Answers **PDF** and **VCE** file from:

<https://www.pass2lead.com/ns0-509.html>

100% Passing Guarantee
100% Money Back Assurance

Following Questions and Answers are all new published by NetApp
Official Exam Center

- ⚙️ **Instant Download** After Purchase
- ⚙️ **100% Money Back** Guarantee
- ⚙️ **365 Days** Free Update
- ⚙️ **800,000+** Satisfied Customers



QUESTION 1

Click the Exhibit button.

Question **Exhibit**

ONTAP Path: AFF_SAN_DEFAULT_SVM:/vol/OraDev_Vol/OraDev
LUN: 0
LUN Size: 65g
Product: cDOT
Host Device: 3600a09803830374a645d4933616f5275
Multipath Policy: service-time 0
Multipath Provider: Native

host path state	vserver path type	/dev/ node	host adapter	vserver LIF
up	primary	sdf	host2	aff_node-01_0e_A
up	primary	sdb	host1	aff_node-01_0g_A
up	secondary	sdd	host1	aff_node-02_0g_A
	secondary	sdh	host2	aff_node-02_0e_A

Referring to the exhibit, which two LIFs would be optimized paths to LUN /vol/OraDev_Vol/OraDev? (Choose two.)

- A. aff_node-01_0g_A
- B. aff_node-02_0e_A
- C. aff_node-02_0g_A
- D. aff_node-01_0e_A

Correct Answer: AD

Reference: <https://docs.netapp.com/ontap-9/index.jsp?topic=%2Fcom.netapp.doc.dot-cm-sanag%2FGUID-435489AE-7FB4-4178-BDEB-C6FC528860BD.html>

QUESTION 2

Click the Exhibit button.

Priority	Category	Bus Type	Mktg Part No	Images	LED	Mfg Part No	Description	Optical Module	Cables	Supported Speed (s)	Min ONTAP	MAXQty ^[2]	Priority Slot Assignment
1	NVRAM	IO Module	X93140A		View	111-03190	NVRAM10 32GB	Not Supported	View		9,1RC2, 9,2RC1, 9,3RC1, 9,4RC1, 9,5RC1	1	6
2	Networking	IO Module	X91440A ^[2]		View	111-02590	2p 40GbE NIC Cu/Op	OSFP Optional	View	ETH: 10/40 Gbps	9,1RC2, 9,2RC1, 9,3RC1, 9,4RC1, 9,5RC1	6 ^[2]	4,6,9,1,10,2,11,3,7,6
3	Block Access	IO Module	X91135A		View	111-03789	4p 32Gb FC SFP -Op	SFP + Included	View	FC:8/16/32 Gbps FC:16/32 Gbps	9,3RC1, 9,4RC1, 9,5RC1	6	9,1,10,2,11,3,7,6
4	Block Access	IO Module	X91134A		View	111-03431	2p 32Gb FC Op	SFP + Included	View	FC:8/16/32 Gbps FC:16/32 Gbps	9,1RC2, 9,2RC1, 9,3RC1, 9,4RC1, 9,5RC1	6	9,1,10,2,11,3,7,6,8
5	Block Access	IO Module	X91143A		View	111-02397	4p 16Gb 10Gb UTA2 Cu/Op	SFP + Optional	View	ETH: 1/10 Gbps FC:4/8/16 Gbps	9,1RC2, 9,2RC1, 9,3RC1, 9,4RC1, 9,5RC1	6	9,1,10,2,11,3,7,6,8

A customer wants to add a 2-port, 32 Gb FC card to support NVMe in an AFF A700 2-node cluster. Currently, there are cards in slots 1, 2, 4, 6, 8, and 9.

Referring to the exhibit, what is the number of the slot that should be used?

- A. 10
- B. 3
- C. 5
- D. 7

Correct Answer: C

QUESTION 3

An administrator reviews the Upgrade Advisor before performing an upgrade of their ONTAP cluster.

What information is detailed in the report? (Choose two.)

- A. pre-upgrade checks
- B. performance metrics
- C. risk exposures
- D. cluster interconnect checks

Correct Answer: AD

QUESTION 4

Which two features does Asymmetric Namespace Access (ANA) support? (Choose two.)

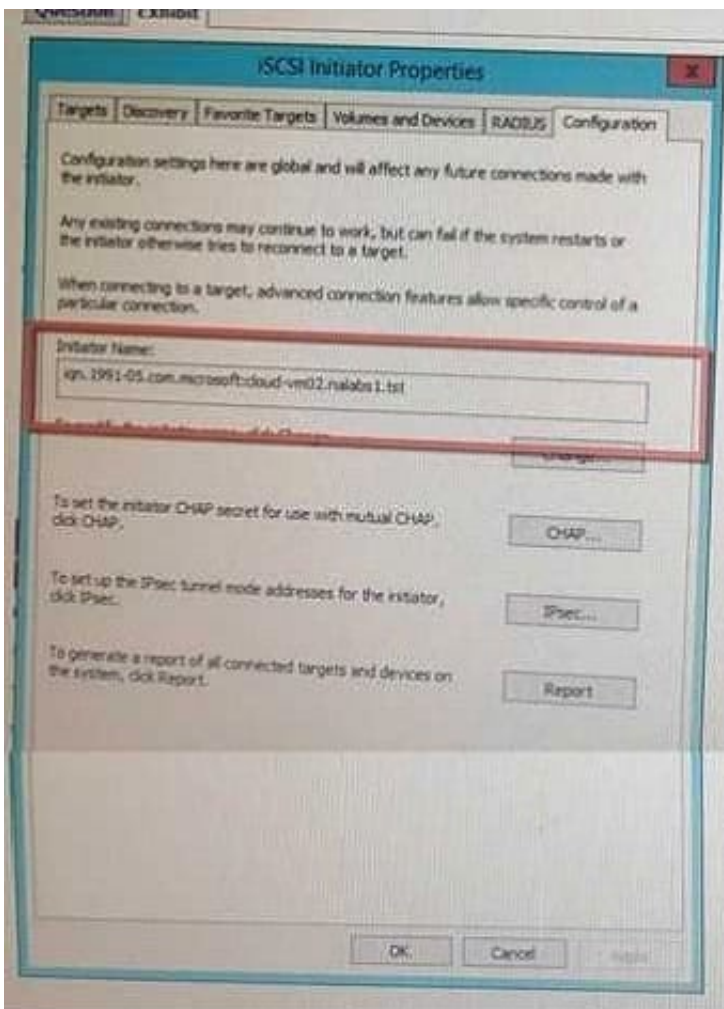
- A. multipathing
- B. LUN masking
- C. LUN hosting
- D. path management

Correct Answer: AD

Reference: <https://www.netapp.com/us/media/tr-4684.pdf> (16)

QUESTION 5

Exhibit.



You want to map a LUN to a server.

To which SAN object is the highlighted value in the exhibit added?

- A. LUN

B. fabric zone

C. FlexClone

D. igroup

Correct Answer: D

[Latest NS0-509 Dumps](#)

[NS0-509 PDF Dumps](#)

[NS0-509 Braindumps](#)