

NS0-527^{Q&As}

NetApp Certified Implementation Engineer - Data Protect

Pass NetApp NS0-527 Exam with 100% Guarantee

Free Download Real Questions & Answers **PDF** and **VCE** file from:

<https://www.pass2lead.com/ns0-527.html>

100% Passing Guarantee
100% Money Back Assurance

Following Questions and Answers are all new published by NetApp
Official Exam Center

- ⚙️ **Instant Download** After Purchase
- ⚙️ **100% Money Back** Guarantee
- ⚙️ **365 Days** Free Update
- ⚙️ **800,000+** Satisfied Customers



QUESTION 1

You have set up a SnapMirror relationship between two SVMs for data protection. The data in the source volume is unavailable due to an event related to a virus infection leading to data corruption. In this scenario, which three actions are required to activate the SnapMirror destination volume and provide data access to the users? (Choose three.)

- A. Perform a SnapMirror quiesce operation.
- B. Disable the source volume by taking it offline.
- C. Configure the destination volume for data access.
- D. Verify the status of the source and destination volumes.
- E. Perform a SnapMirror break operation.

Correct Answer: CDE

QUESTION 2

Your customer needs to activate a destination SVM DR following a disaster. In this situation, which two actions should be performed? (Choose two.)

- A. Shut down the source cluster.
- B. From the destination cluster, break the SVM DR relationship.
- C. From the source cluster, break the SVM DR relationship.
- D. Start the destination SVM.

Correct Answer: AD

QUESTION 3

Which two statements are correct about configuring a peering connection between clusters? (Choose two.)

- A. The LIFs should be on the same subnet.
- B. You must use at least one intercluster LIF per node.
- C. You must use one cluster LIF per node per network.
- D. The intercluster LIFs must have full connectivity to each other.

Correct Answer: BD

Reference: <https://docs.netapp.com/ontap-9/index.jsp?topic=%2Fcom.netapp.doc.pow-csp%2FGUID-0F81B700-7B79-456F-9C89-3A7D6451AEB6.html>

QUESTION 4

You have an environment with multiple database servers that are performing scheduled nightly dumps. These dumps vary in both the time to complete and the size of data produced. You need to ensure that there is always enough room in the

volume for the data and that a nightly SnapMirror update does not take place until the database dump process is complete.

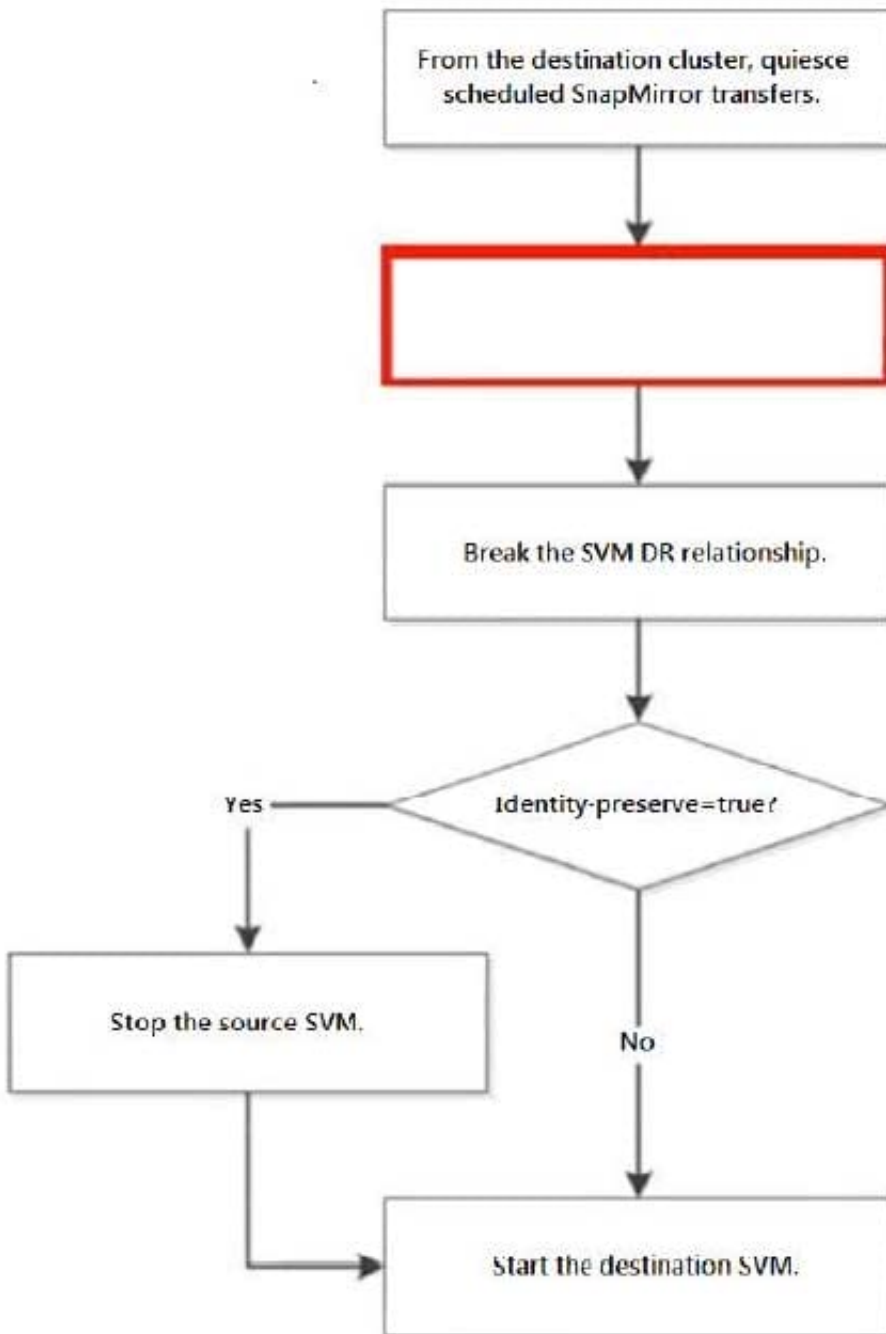
In this scenario, which NetApp tool ensures that this process is completed every night?

- A. OnCommand Unified Manager
- B. OnCommand Insight
- C. OnCommand Workflow Automation
- D. OnCommand System Manager

Correct Answer: D

QUESTION 5

Click the Exhibit button.



In an ONTAP environment, an SVM-DR relationship exists between your AFF A220 cluster and your FAS2720 cluster, with identity preserve enabled. You are asked to test the disaster recovery workflow in an upcoming maintenance window. Referring to the exhibit, which step should be performed next to test the recovery workflow?

- A. Delete the SVM-DR relationship.
- B. Pause any ongoing transfers.
- C. Abort any ongoing transfers.
- D. Update any ongoing transfers.

Correct Answer: C

[NS0-527 PDF Dumps](#)

[NS0-527 VCE Dumps](#)

[NS0-527 Exam Questions](#)