

OAT^{Q&As}

Optometry Admission

Pass Test Prep OAT Exam with 100% Guarantee

Free Download Real Questions & Answers **PDF** and **VCE** file from:

<https://www.pass2lead.com/oat.html>

100% Passing Guarantee
100% Money Back Assurance

Following Questions and Answers are all new published by Test Prep
Official Exam Center

- ⚙️ **Instant Download** After Purchase
- ⚙️ **100% Money Back** Guarantee
- ⚙️ **365 Days** Free Update
- ⚙️ **800,000+** Satisfied Customers



QUESTION 1

Which of the following is the largest organelle in an animal cell?

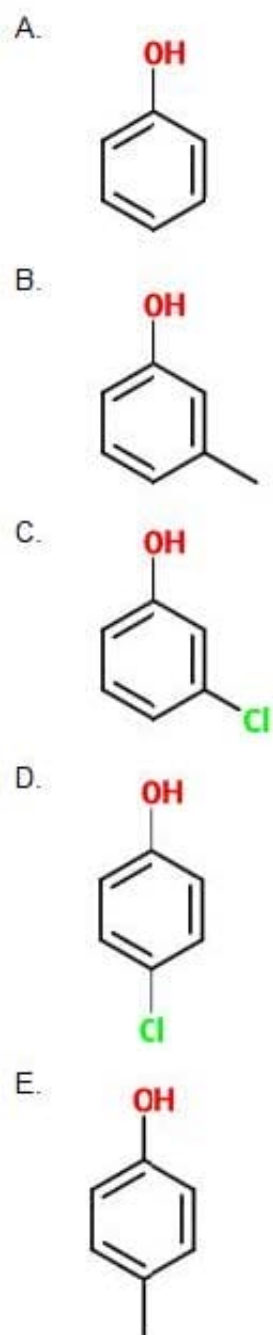
- A. Mitochondrion
- B. Chloroplast
- C. Nucleus
- D. Vacuole
- E. Golgi apparatus

Correct Answer: C

An animal cell has neither chloroplast nor vacuole, thus B and D can be eliminated. In an animal cell, the nucleus is indeed the largest organelle (in relation to diameter).

QUESTION 2

Which of the following has the higher acidity?



A. Option A

B. Option B

C. Option C

D. Option D

E. Option E

Correct Answer: C

In phenols, the closer the substituent is to the OH, the stronger the acid ($O > M > P$). Same applies to electronegative: the more electronegative the halogen is, the stronger the acid (ex. $F > Cl > Br$). Thus, C is the more electronegative and closer substituent to the OH, making it the more acidic ph.

QUESTION 3

A circuit contains a 2 and a 5 resistor, connected in parallel to each other. What is the equivalent resistance in this circuit?

- A. 7
- B. 10
- C. 0.7
- D. $10/7$
- E. $5/2$

Correct Answer: D

Resistors in parallel add via: $1/R_{eq} = 1/R + 1/R...$ $1/R_{eq} = 1/2 + 1/5$ Finding a common denominator: $5/10 + 2/10 = 7/10 = 1/R_{eq}$ Flipping it to attain $R_{eq} = 10/7$

QUESTION 4

Which of the following functions is NOT controlled by the hypothalamus?

- A. Hunger
- B. Thirst
- C. Sex drive
- D. Blood pressure
- E. Balance

Correct Answer: E

With the exception of the balance, all of the following are controlled by the hypothalamus. Balance is controlled by the cerebellum.

QUESTION 5

An IR chart showed a distinct peak at $\sim 1710 \text{ cm}^{-1}$. Which of the following does the peak represent best in an unknown compound?

- A. $C = C$
- B. $C = O$

C. O – H (alcohol)

D. Aromatic C – C

E. N – H

Correct Answer: B

A carbonyl has a distinct peak at ~1710 whereas a C = C bond as a peak at ~1650. Alcohols (OH) have a broad peak around 3300, as do N – H bonds (not as broad as OH however).

[Latest OAT Dumps](#)

[OAT PDF Dumps](#)

[OAT Exam Questions](#)