



OG0-023^{Q&As}

ArchiMate 2 Combined Part 1 and 2 Examination

Pass The Open Group OG0-023 Exam with 100% Guarantee

Free Download Real Questions & Answers **PDF** and **VCE** file from:

<https://www.pass4lead.com/og0-023.html>

100% Passing Guarantee
100% Money Back Assurance

Following Questions and Answers are all new published by The Open Group Official Exam Center

-  **Instant Download** After Purchase
-  **100% Money Back** Guarantee
-  **365 Days** Free Update
-  **800,000+** Satisfied Customers





QUESTION 1

Scenario

Please read this scenario prior to answering the question

The ArchiSurance IT Operations (IT Ops) department has five core responsibilities, and continuously executes a core business process for each responsibility. (1) The Batch Ops process makes sure that batch jobs execute completely, successfully, and on time, consistent with their service level agreements (SLAs).

(2)

The Online Ops process makes sure that all web applications and content delivery services are available and performing according to their SLAs.

(3)

The Security Ops process protects ArchiSurance IT operations from being damaged by malicious or careless incidents.

(4)The User Support process assists users of ArchiSurance systems with problems or requests. (5) The Continuous Improvement process monitors and measures the performance of each of the other processes and works to solve problems and optimize use of ArchiSurance resources. In order to enable monitoring, each of the other processes generates monitoring data that is read by the Continuous Improvement process.

The processes in the System Ops category, which are Batch Ops, Online Ops and Security Qds, each have a separate sub-process for incident management. These sub-processes are triggered, respectively, by Batch, Online and Security Incidents. One of the first steps in each incident management sub-process, is to pass an Incident Alert to each of the other System Ops processes. This is accomplished by posting the alert to the Alert Buffer. The Batch Ops process uses a schedule that lists all batch jobs and their dependencies. The schedule is used by two Batch Ops sub-processes. The Batch Planning sub-process updates this schedule for use by the Execution Management sub-process.

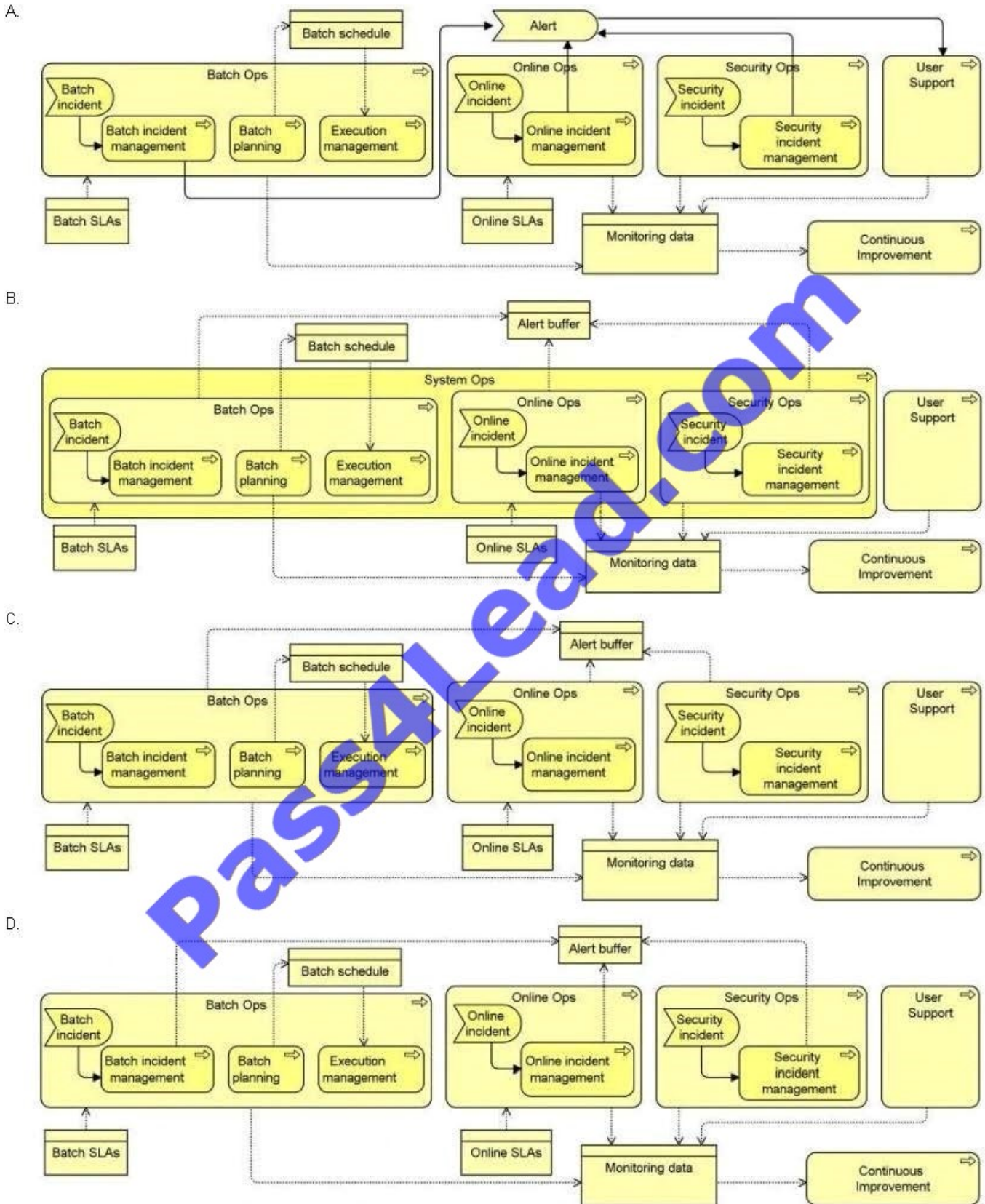
The Batch Ops process uses a number of applications that interact with each other. The Batch Scheduler application enables users to manage a database of jobs, job schedules and dependencies, and launches batch jobs according to the database. The Batch Monitor application uses the job schedules as a reference to monitor job execution, and reports all exceptional conditions to the both the Batch Scheduler and the Incident Handler applications via the Alert Buffer described earlier in the scenario. The Incident Handler refers to a set of business rules to determine the systems and individuals that must be notified of each incident. Based on these determinations, the Incident Handler produces appropriate notifications.

Due to their criticality, the Batch Scheduler, Batch Monitor and Incident Handler applications are hosted redundantly in multiple geographically distributed data centers. In each data center, the three applications are hosted on a fully redundant virtual server cluster. Each cluster is connected to two site local area networks, each of which connects to a separate physical storage array.

Refer to the scenario

As part of an IT service management initiative, you have been asked to model the operations management business processes and sub-processes, including their relationships, the events that trigger them and the information they exchange.

Which answer provides the most complete and accurate model?



A. B. C. D.

Correct Answer: D

**QUESTION 2**

Consider the following diagram, which shows a relationship between two business objects:



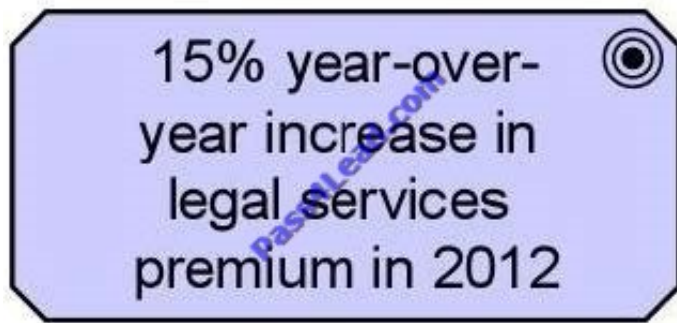
Which of the following best describes the relationship shown in the diagram between Insurance Policy and Insured Individuals?

- A. Insurance policy is composed of insured individuals
- B. Insurance policy is used by insured individuals
- C. All required information about insured individuals is stored within the insurance policy record
- D. Insurance policy groups insured individuals

Correct Answer: D

QUESTION 3

Consider the following symbol, which represents information about a transformation project at ArchiSurance. Note that premium in this context means the total revenue ArchiSurance receives from legal services insurance premium payments:



Which of the following statements correctly expresses the meaning of the symbol?

- A. ArchiSurance has attributed a 15% increase in premium to the transformation project in 2012
- B. The increased premium revenue created by completion of the transformation project will motivate significant change in the ArchiSurance Legally Yours division
- C. ArchiSurance has set a goal to increase legal services premium by 15% in 2012, as compared to the previous year
- D. ArchiSurance has a requirement to increase legal services premium by 15% in 2012

Correct Answer: C

QUESTION 4

The ArchiMate modeling language can be used to describe different types of architecture and the relationships between them.

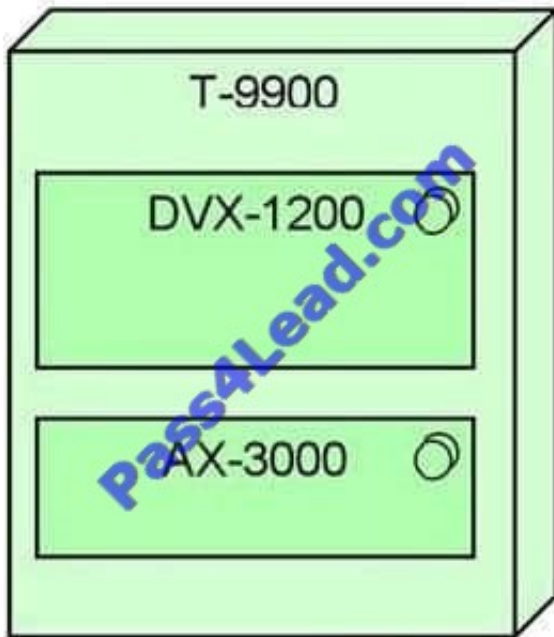
Which of the following lists the three main layers of the ArchiMate language?

- A. Business, Information, and Application
- B. Application, Data, and Technology
- C. Business, Application, and Technology
- D. Business, Integration, and Infrastructure

Correct Answer: C

QUESTION 5

The diagram below shows key elements of the configuration of ArchiSurance's newest and most powerful high-end server, which is a model T-9900:



Which of the following descriptions of the configuration is most consistent with the diagram?

- A. The T-9900 is fitted with a DVX-1200 cooling system and AX-3000 onboard disk array
- B. The T-9900 is running PRO-FIT's custom, internally-developed DVX-1200 software for enterprise risk analysis and is fitted with an AX-3000 onboard disk array
- C. The T-9900 node is running DVX-1200 middleware and the AX-3000 operating system software
- D. The T-9900 is an assembly of DVX-1200 processing units and AX-3000 high-speed memory arrays

Correct Answer: C

[Latest OG0-023 Dumps](#)

[OG0-023 Exam Questions](#)

[OG0-023 Braindumps](#)



To Read the [Whole Q&As](#), please purchase the [Complete Version](#) from [Our website](#).

Try our product !

100% Guaranteed Success

100% Money Back Guarantee

365 Days Free Update

Instant Download After Purchase

24x7 Customer Support

Average 99.9% Success Rate

More than 800,000 Satisfied Customers Worldwide

Multi-Platform capabilities - [Windows](#), [Mac](#), [Android](#), [iPhone](#), [iPod](#), [iPad](#), [Kindle](#)

We provide exam PDF and VCE of Cisco, Microsoft, IBM, CompTIA, Oracle and other IT Certifications. You can view Vendor list of All Certification Exams offered:

<https://www.pass4lead.com/allproducts>

Need Help

Please provide as much detail as possible so we can best assist you.

To update a previously submitted ticket:



 <p>One Year Free Update Free update is available within One Year after your purchase. After One Year, you will get 50% discounts for updating. And we are proud to boast a 24/7 efficient Customer Support system via Email.</p>	 <p>Money Back Guarantee To ensure that you are spending on quality products, we provide 100% money back guarantee for 30 days from the date of purchase.</p>	 <p>Security & Privacy We respect customer privacy. We use McAfee's security service to provide you with utmost security for your personal information & peace of mind.</p>
---	---	--

Any charges made through this site will appear as Global Simulators Limited.

All trademarks are the property of their respective owners.

Copyright © pass4lead, All Rights Reserved.