

OMG-OCUP2-INT200^{Q&As}

OMG Certified UML Professional 2 (OCUP 2) - Intermediate Level

Pass OMG OMG-OCUP2-INT200 Exam with 100% Guarantee

Free Download Real Questions & Answers **PDF** and **VCE** file from:

<https://www.pass2lead.com/omg-ocup2-int200.html>

100% Passing Guarantee
100% Money Back Assurance

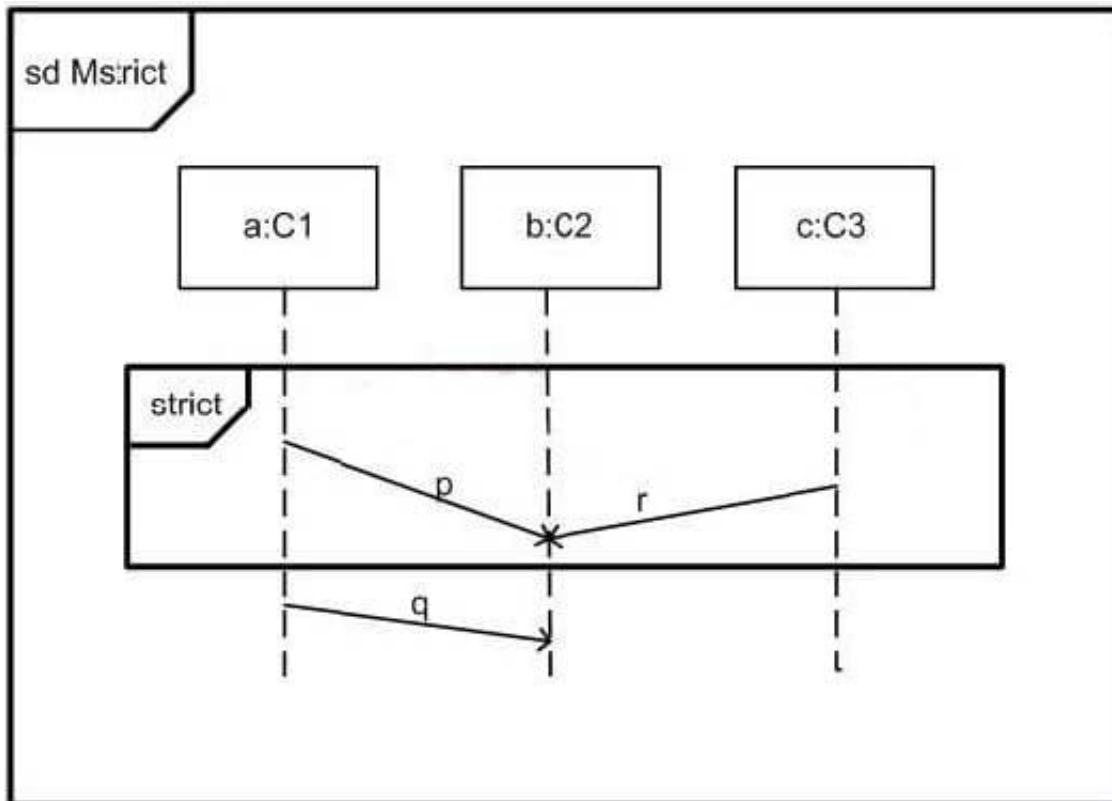
Following Questions and Answers are all new published by OMG
Official Exam Center

- ⚙️ **Instant Download** After Purchase
- ⚙️ **100% Money Back** Guarantee
- ⚙️ **365 Days** Free Update
- ⚙️ **800,000+** Satisfied Customers



QUESTION 1

In the exhibit, what is true about Mstrict?



- A. Within the strict combined fragment, sending a signal will immediately be followed by the reception of that signal.
- B. The whole Mstrict has only one legal trace.
- C. Sending q precedes reception of r in all legal traces.
- D. Sending r precedes sending p in all legal traces

Correct Answer: C

QUESTION 2

What indicates an artifact instance in UML notation? (Choose two.)

- A. single sheet icon with a folder-over corner
- B. syntactically well-formed file name
- C. class box with two smaller rectangles on its left side
- D. memo box

E. keyword

Correct Answer: AE

QUESTION 3

What kind of class is the Device class?

- A. Hardware
- B. Execution Environment C. Association
- D. Installation
- E. Node

Correct Answer: E

QUESTION 4

Which list contains only connectable elements?

- A. behavior, connector end, and port
- B. behavior, port and property
- C. port and connector end
- D. connector end, port and part
- E. property, port, and parameter

Correct Answer: E

QUESTION 5

What is NOT a valid Variable Action?

- A. Remove Variable Value Action
- B. Add Variable Value Action
- C. Clear Variable Action
- D. Read Variable Action
- E. Set Variable Action

Correct Answer: E

[Latest OMG-
OCUP2-INT200 Dumps](#)

[OMG-OCUP2-INT200 VCE
Dumps](#)

[OMG-OCUP2-INT200
Braindumps](#)