

OMG-OCUP2-INT200^{Q&As}

OMG Certified UML Professional (OCUP 2) - Intermediate Level

Pass OMG OMG-OCUP2-INT200 Exam with 100% Guarantee

Free Download Real Questions & Answers **PDF** and **VCE** file from:

<https://www.pass2lead.com/omg-ocup2-int200.html>

100% Passing Guarantee
100% Money Back Assurance

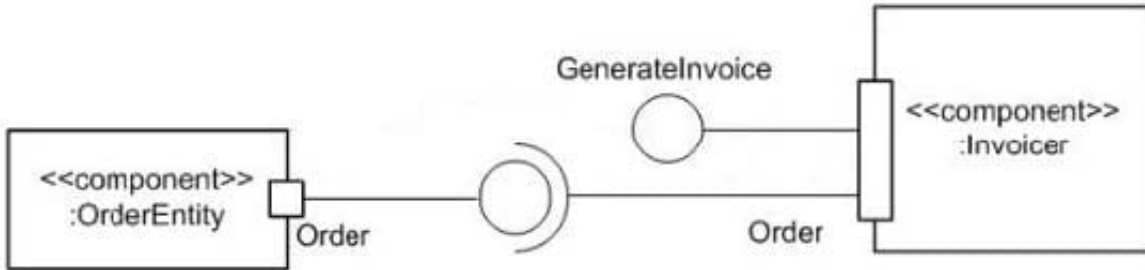
Following Questions and Answers are all new published by OMG
Official Exam Center

-  **Instant Download** After Purchase
-  **100% Money Back** Guarantee
-  **365 Days** Free Update
-  **800,000+** Satisfied Customers



QUESTION 1

What best describes the semantics modeled by the exhibit?

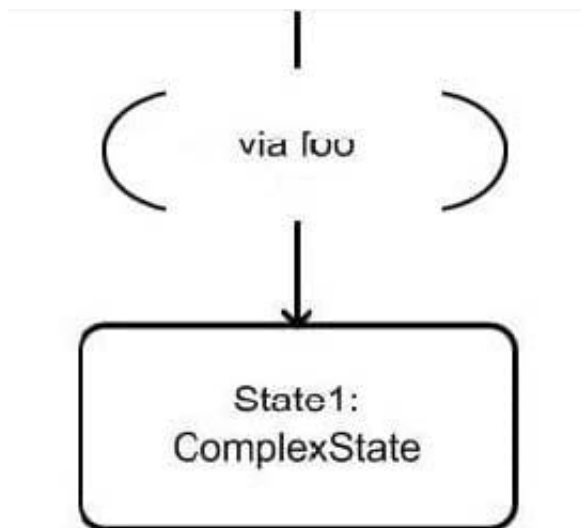


- A. The Order Entity component is part of the internals of the Invoicer component.
- B. The Invoicer has a complex connector that connects the Generate Invoice interface with the Order interface.
- C. This is an illegal diagram.
- D. The Invoicer has a complex port that provides the interface Generate Invoice and requires the interface Order.

Correct Answer: D

QUESTION 2

What does via foo in the exhibit designate?



- A. an action foo associated with the transition
- B. transient pseudostate named foo
- C. a transition terminating on the foo entry point
- D. a Boolean guard equal to the logical value of foo

E. the sending of a foo message on the transition

Correct Answer: C

QUESTION 3

What are valid ways to present a component's artifacts file, such as a jar file? (Choose two.)

- A. stereotype of class with keyword with a solid arrow pointing to the related component
- B. stereotype of class with keyword with a dashed arrow pointing to the related component
- C. stereotype of a component with keyword with a dashed arrow pointing to the related component
- D. as a compartment of a related component
- E. stereotype of a component with keyword with a solid arrow pointing to the related component

Correct Answer: BD

QUESTION 4

Assume component A provides an interface P and requires an interface R. In order for a component B to be substituted for component A, what must be true?

- A. The interface that B requires must be type conformant with respect to the interface that A provides.
- B. The interface that B requires must be type conformant with respect to the interface that A requires, and the interface that B provides must be type conformant with respect to the interface that A provides.
- C. The interface that A requires must be type conformant with respect to the interface that B provides.
- D. Components must be related to each other via a dependency.

Correct Answer: B

QUESTION 5

What situation results from performing a Create Object Action on an abstract class?

- A. undefined behavior
- B. arbitrary object of one of its subclasses being created
- C. exception being raised
- D. error log entry created
- E. object of the specified class being created

Correct Answer: A

[OMG-OCUP2-INT200 VCE
Dumps](#)

[OMG-OCUP2-INT200
Practice Test](#)

[OMG-OCUP2-INT200 Study
Guide](#)