

OMG-OCUP2-INT200^{Q&As}

OMG Certified UML Professional (OCUP 2) - Intermediate Level

**Pass OMG OMG-OCUP2-INT200 Exam with 100%
Guarantee**

Free Download Real Questions & Answers **PDF** and **VCE** file from:

<https://www.pass2lead.com/omg-ocup2-int200.html>

100% Passing Guarantee
100% Money Back Assurance

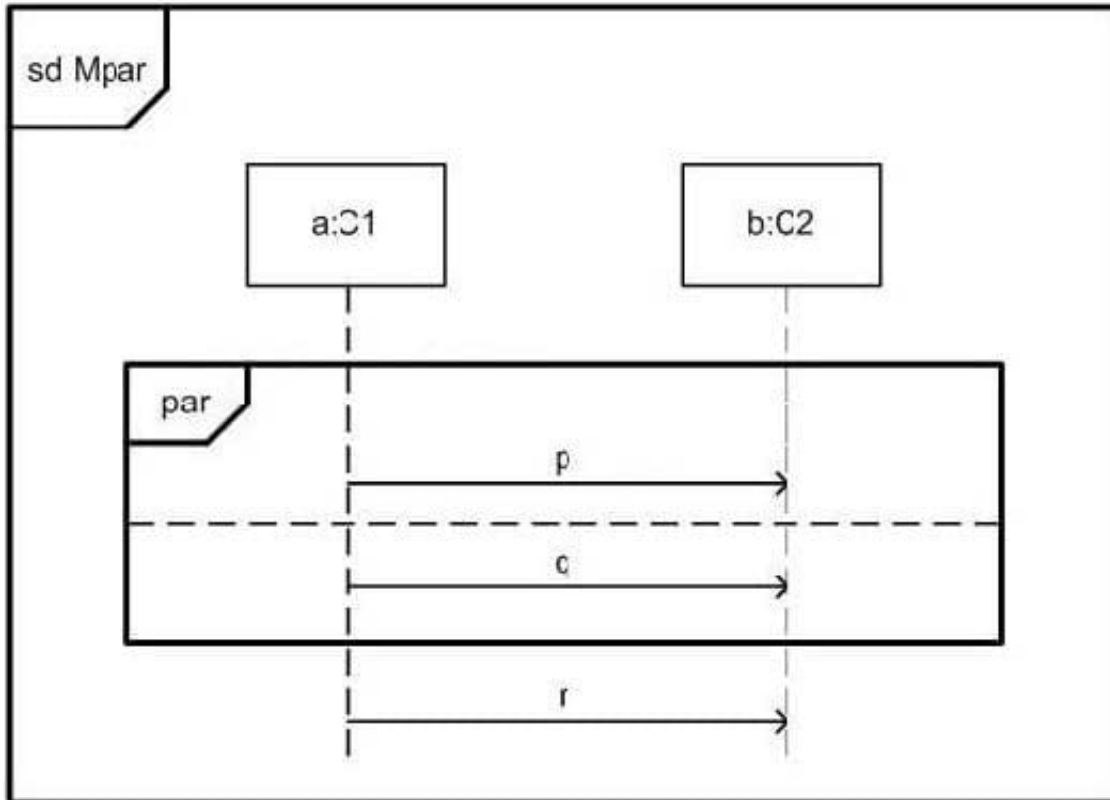
Following Questions and Answers are all new published by OMG
Official Exam Center

-  **Instant Download** After Purchase
-  **100% Money Back** Guarantee
-  **365 Days** Free Update
-  **800,000+** Satisfied Customers



QUESTION 1

In the exhibit, what is true about Mpar?



- A. There are legal traces that do not contain message q.
- B. Every trace contains all three messages.
- C. Receiving p must always precede receiving q.
- D. Sending p must always precede sending q.

Correct Answer: B

QUESTION 2

What statements are true about a composite structure? (Choose two.)

- A. Destroying an instance of a structured classifier normally destroys instances of its parts.
- B. Structured classifiers cannot contain instances of structured classifiers.
- C. The behavior of a structured classifier must be completely defined through the collaboration of owned or referenced instances.
- D. Collaborations are structured classifier.

E. A structured classifier is also an encapsulated classifier.

Correct Answer: AD

QUESTION 3

How many bar shapes can appear in a well-defined activity diagram?

- A. exactly two
- B. an add number
- C. an even number
- D. any number

Correct Answer: D

QUESTION 4

An encapsulated classifier is characterized by which fact?

- A. acts as a package and can own one or more classifiers
- B. hides information from other classifiers
- C. can own one or more ports
- D. has an encapsulation shell

Correct Answer: C

QUESTION 5

What are the kinds of structured nodes? (Choose two.)

- A. partition
- B. object node
- C. loop
- D. action
- E. conditional

Correct Answer: CE

[Dumps](#)

[Practice Test](#)

[Questions](#)