

# VCPC610<sup>Q&As</sup>

VMware Certified Professional 6 - Cloud

**Pass VMware VCPC610 Exam with 100% Guarantee**

Free Download Real Questions & Answers **PDF** and **VCE** file from:

<https://www.pass2lead.com/vcpc610.html>

100% Passing Guarantee  
100% Money Back Assurance

Following Questions and Answers are all new published by VMware  
Official Exam Center

-  **Instant Download** After Purchase
-  **100% Money Back** Guarantee
-  **365 Days** Free Update
-  **800,000+** Satisfied Customers



### QUESTION 1

A customer needs to create a virtual machine that can be migrated across multiple vSphere clusters. The virtual machine has an application that must detect the physical characteristics of the storage device.

Which type of virtual disk can be added to the virtual machine to meet these requirements?

- A. A virtual disk on a VMFS datastore
- B. A raw device mapped disk in virtual compatibility mode
- C. A raw device mapped disk in physical compatibility mode
- D. A virtual disk on an NFS datastore

Correct Answer: C

---

### QUESTION 2

Which three types of Compute Resources can vCloud Automation Center use to provision machines? (Choose three.)

- A. ESX or ESXi host or cluster
- B. Virtual datacenter
- C. Amazon region
- D. Amazon AWS
- E. vCloud Director

Correct Answer: ABC

---

### QUESTION 3

An IaaS Administrator needs to create vCloud Director Endpoints. The Administrator creates one Endpoint to Organization A but cannot collect on Organization B.

What could be the issue?

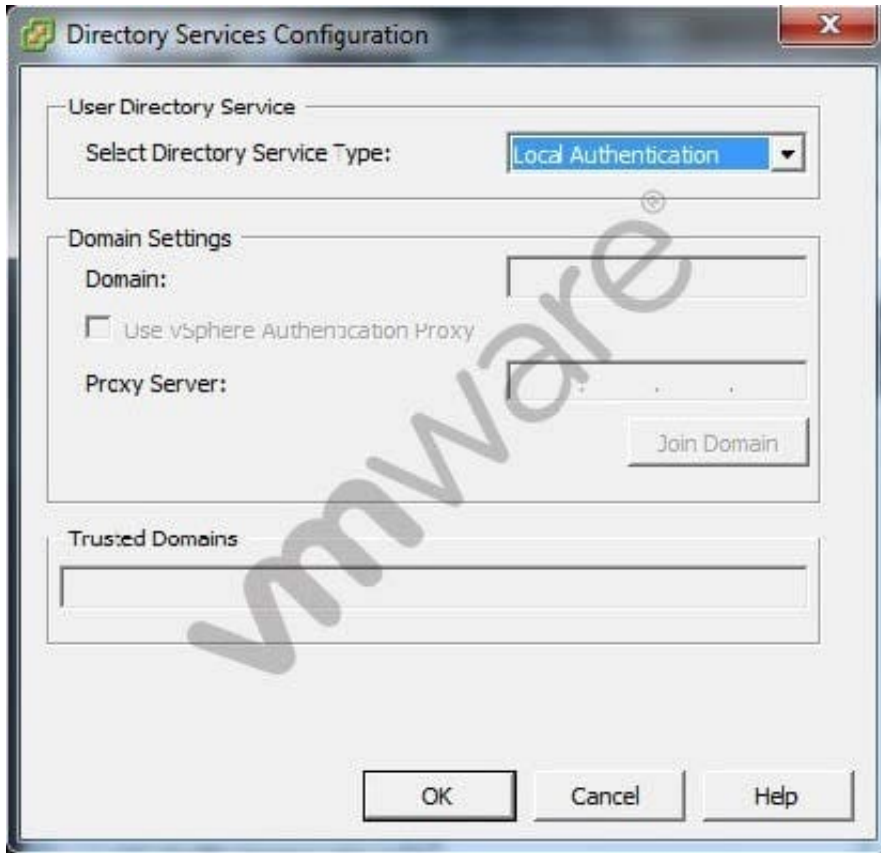
- A. Organization B needs to be enabled on the vCloud Director Endpoint
- B. Organization B needs to be prepared on the vCloud Director Endpoint
- C. A second vCloud Director Endpoint needs to be created to see Organization B
- D. A second organization user needs to be added to the vCloud Director Endpoint

Correct Answer: C

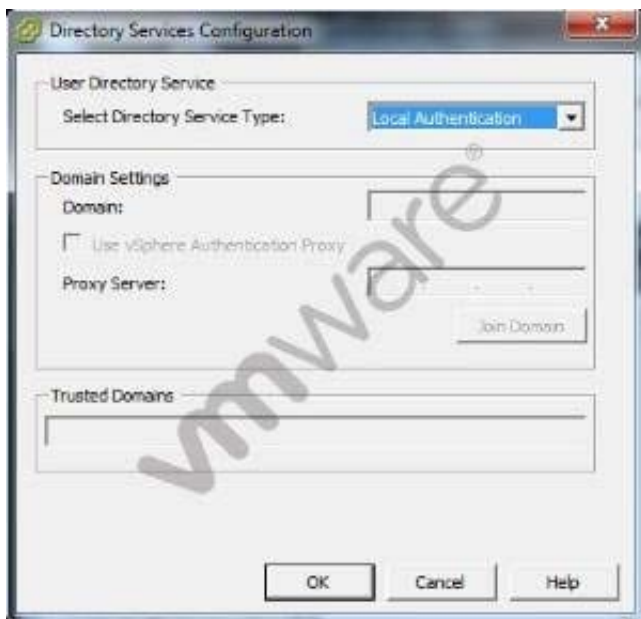
---

**QUESTION 4**

Refer to the Exhibit.



The vSphere administrator is configuring directory services for a host, as shown in the exhibit:



What should the vSphere administrator do to configure the host to use CAM services?

- A. Check the Use vSphere Authentication Proxy checkbox.

- B. Set Select Directory Service Type to "CAM services".
- C. Specify "CAM\$" for the Domain.
- D. Set Trusted Domains to "cam\name.tld" where name.tld is the domain that the host is joining.

Correct Answer: A

---

#### QUESTION 5

A vCloud Automation Center administrator configures a virtual machine blueprint with a maximum storage capacity of 50 GB. The virtual machine attached to that blueprint is provisioned with 15 GB of storage.

What happens when the virtual machine is deployed using the default settings?

- A. The virtual machine is deployed with 15 GB of storage.
- B. The virtual machine is not deployed.
- C. The virtual machine disk is deployed with 50 GB of storage.
- D. The user is prompted to reconfigure the virtual machine's storage.

Correct Answer: A

[VCPC610 VCE Dumps](#)

[VCPC610 Exam Questions](#)

[VCPC610 Braindumps](#)