

VCPD610^{Q&As}

VMware Certified Professional - Desktop

Pass VMware VCPD610 Exam with 100% Guarantee

Free Download Real Questions & Answers **PDF** and **VCE** file from:

<https://www.pass2lead.com/vcpd610.html>

100% Passing Guarantee
100% Money Back Assurance

Following Questions and Answers are all new published by VMware
Official Exam Center

- ⚙️ **Instant Download** After Purchase
- ⚙️ **100% Money Back** Guarantee
- ⚙️ **365 Days** Free Update
- ⚙️ **800,000+** Satisfied Customers



QUESTION 1

An administrator creates a Windows 7 parent virtual machine for a linked-clone pool but finds that some of the virtual machines fail to customize. The administrator has confirmed that the View Agent is installed with the correct components. The virtual machines are configured with the following hardware specifications:

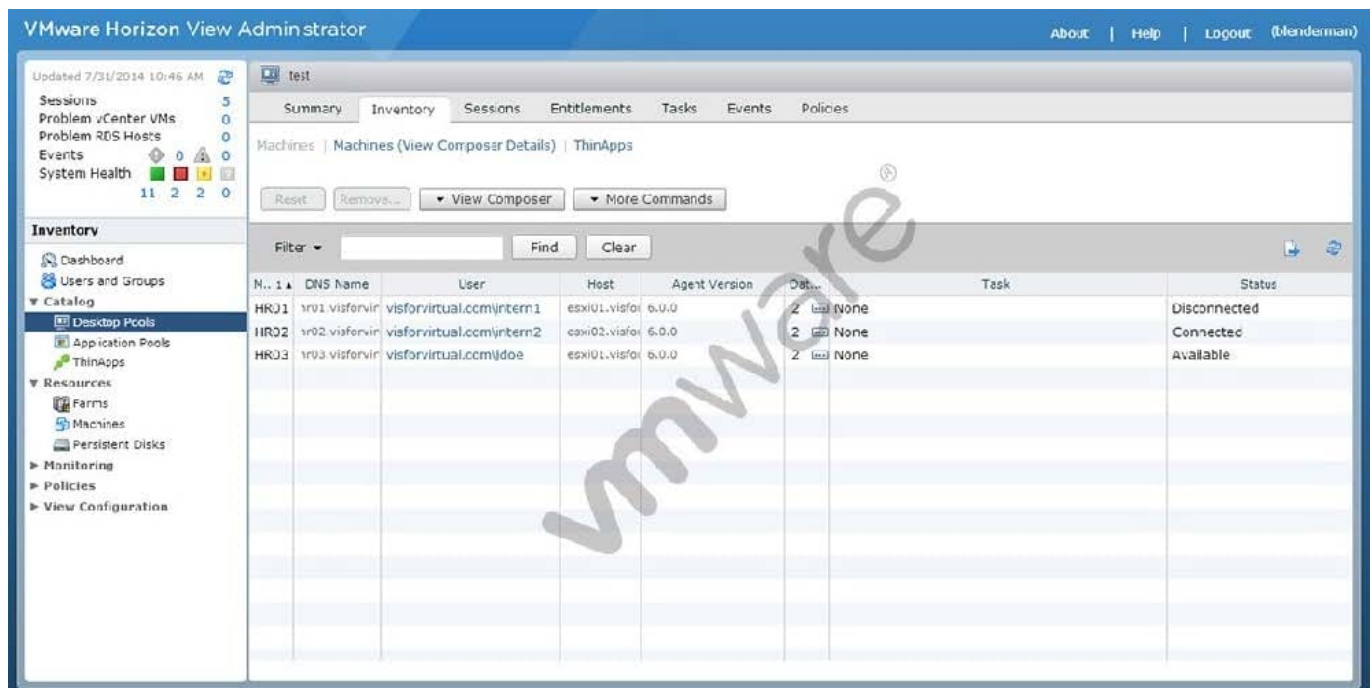
What is causing the problem?

- A. The Receive Side Scaling (RSS) setting for the VMXNET3 driver is set to 2.
- B. Parent virtual machines for a linked-clone pool require a minimum of 2 vCPUs.
- C. The parent virtual machine does not have enough video RAM configured.
- D. The Microsoft Windows 7 patch for the VMXNET3 driver has not been installed.

Correct Answer: D

QUESTION 2

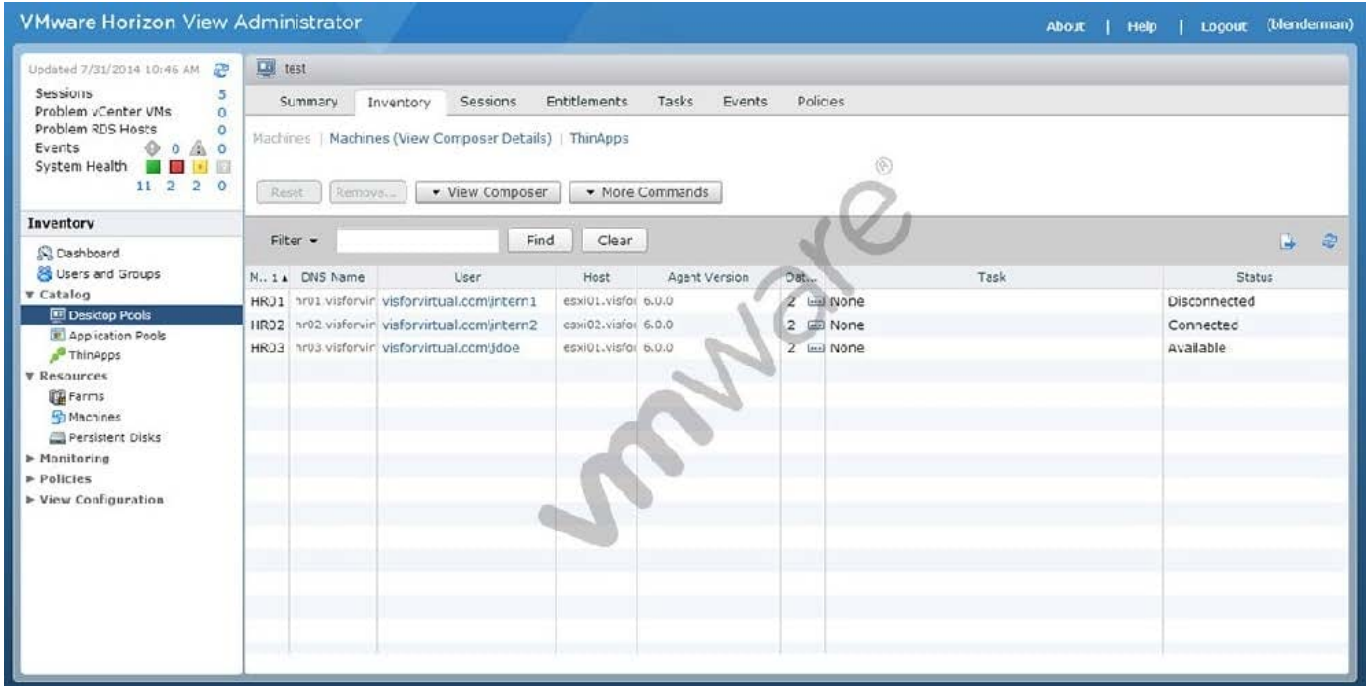
Refer to the exhibit.



A new employee with username of jsmith is replacing a former employee with username jdoe. The pool is using dedicated assignment and has all desktops provisioned up front.

User jsmith receives the following message:

There are no desktop sources available right now. Please try again later. An administrator views the information displayed in the exhibit shown:



Based on the information provided, what are two ways to solve the problem? (Choose two.)

- A. Increase the number of virtual machines in the pool.
- B. Delete and rebuild the virtual machines in the pool.
- C. Unassign jdoe from HR03 and Assign jsmith to HR03.
- D. Verify that user jsmith has RDP permissions to the desktops.

Correct Answer: AC

QUESTION 3

An administrator is granted access to a vCenter Server with a custom Active Directory user account. The user account should have the required permissions for full management of the View environment. However, when the administrator attempts to enable View Storage Accelerator, permission is denied.

Which View privilege within vCenter Server needs to be configured?

- A. Storage Views > View
- B. Global > Act as vCenter Server
- C. Host.Configuration > Advanced settings
- D. Virtual Machine.Configuration > Modify device settings

Correct Answer: B

QUESTION 4

An administrator configures a user with a global entitlement and a global home site, but has not set the scope policy.

Which search order will Cloud Pod Architecture use to find a desktop for that user?

- A. Global home site, local pod, local site, other sites
- B. Local pod, local site, other sites
- C. Local pod, local site, global home site, other sites
- D. Global home site, local site, other sites

Correct Answer: A

QUESTION 5

What should the administrator do first when configuring vCenter Operations Manager for Horizon to monitor their View deployment?

- A. Add Adapter from the View Configuration > Servers page in View
- B. Add Adapter from the Custom Dashboard page > Configuration in vCenter Operations Manager
- C. Configure the Adapter from the Administration > Solutions page in vCenter Operations Manager
- D. Configure the Adapter from the View Configuration > Global Settings page in View

Correct Answer: C

[VCPD610 VCE Dumps](#)

[VCPD610 Practice Test](#)

[VCPD610 Braindumps](#)