

# VCS-272<sup>Q&As</sup>

Administration of Veritas NetBackup 7.6.1

## Pass Veritas VCS-272 Exam with 100% Guarantee

Free Download Real Questions & Answers **PDF** and **VCE** file from:

<https://www.pass2lead.com/vcs-272.html>

100% Passing Guarantee  
100% Money Back Assurance

Following Questions and Answers are all new published by Veritas  
Official Exam Center

- ⚙️ **Instant Download** After Purchase
- ⚙️ **100% Money Back** Guarantee
- ⚙️ **365 Days** Free Update
- ⚙️ **800,000+** Satisfied Customers



**QUESTION 1**

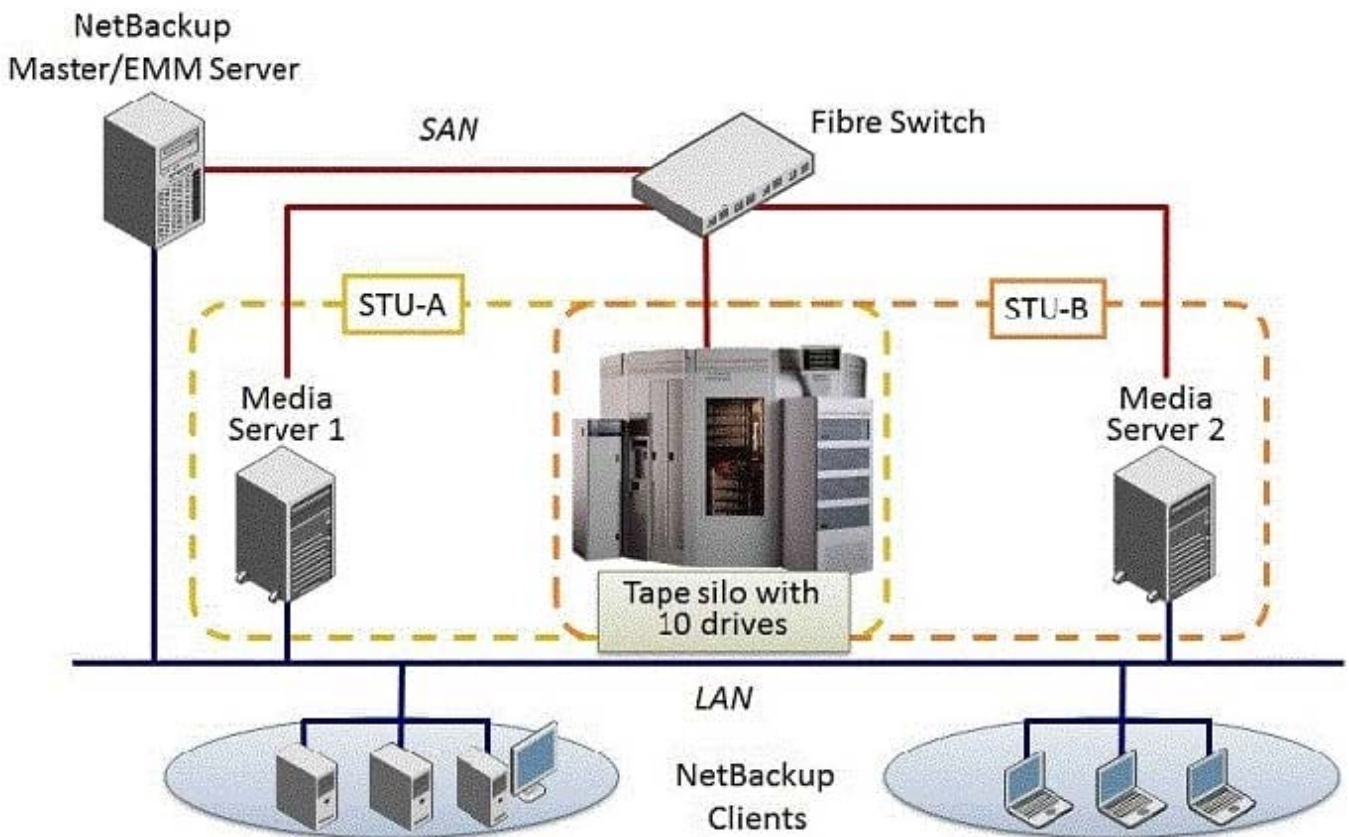
Which parameter in NetBackup Management > Host Properties must be modified to change the logging level to 5 for client1.domain?

- A. Master Servers > [master\_server\_name] > Logging > Global logging level
- B. Clients > [client\_name] > Logging > Global logging level
- C. Master Servers > [master\_server\_name] > Logging > Enable robust logging
- D. Clients > [client\_name] > Logging > Enable robust logging

Correct Answer: B

**QUESTION 2**

Refer to the exhibit.



Two media servers, sharing a library with 10 tape drives, exist in the NetBackup 7.6.1 environment displayed in the exhibit. Both weekly full and daily differential incremental backups need to run for the clients and each schedule has a different retention period. Because of network topology, some clients back up to Media Server 1 and some back up to Media Server 2. The environment suffers from multiple status 96 failures during the backup window.

How can the administrator minimize the number of failures?

- A. increase the Media unmount delay
- B. configure media multiplexing
- C. enable backups to span tape media
- D. enable media sharing

Correct Answer: D

---

### QUESTION 3

Backup jobs end with the following series of messages in the Job Details:

Error bpbrm(pid= ) db\_FLISTsend failed: Unable to connect to the database (2505)

12/05/2013 15:39:45 - job 63389 was restarted as job 63390

Failed to get status code information (2505)

Which process is failing to respond?

- A. nbjm
- B. nbemm
- C. bpdbrm
- D. bpbrm

Correct Answer: C

---

### QUESTION 4

Weekly full backups run for clientA on master1 using a storage unit that belongs to media1. The administrator is required to retain clientA's full backups for a period of four months. When the administrator modifies the Full schedule, four months is missing from the selection list.

Where should the administrator add the four-month retention period under Host Properties?

- A. Master Servers > master1 > Retention Periods
- B. Clients > clientA > Global Attributes
- C. Media Servers > media1 > Retention Periods
- D. Master Servers > master1 > Global Attributes

Correct Answer: A

---

### QUESTION 5

A Windows policy protects over 100 servers using the directive ALL\_LOCAL\_DRIVES. The backup window for this policy is a two-hour window that is unused by any other policy. When the jobs run, the overall performance of the disk storage unit is degraded.

Which setting should the administrator modify to reduce the number of concurrent streams writing to the disk storage unit to 10 during the backup window?

- A. enable the "Maximum Data streams" property
- B. enable the "Limit Jobs per policy" attribute
- C. set the "Maximum jobs per client" host property to 10
- D. enable multiplexing for the storage unit and set the value to 10

Correct Answer: B

[Latest VCS-272 Dumps](#)

[VCS-272 PDF Dumps](#)

[VCS-272 Exam Questions](#)