

VCS-274^{Q&As}

Administration of Veritas NetBackup 7.7

Pass Veritas VCS-274 Exam with 100% Guarantee

Free Download Real Questions & Answers **PDF** and **VCE** file from:

<https://www.pass2lead.com/vcs-274.html>

100% Passing Guarantee
100% Money Back Assurance

Following Questions and Answers are all new published by Veritas
Official Exam Center

- ⚙️ **Instant Download** After Purchase
- ⚙️ **100% Money Back** Guarantee
- ⚙️ **365 Days** Free Update
- ⚙️ **800,000+** Satisfied Customers



QUESTION 1

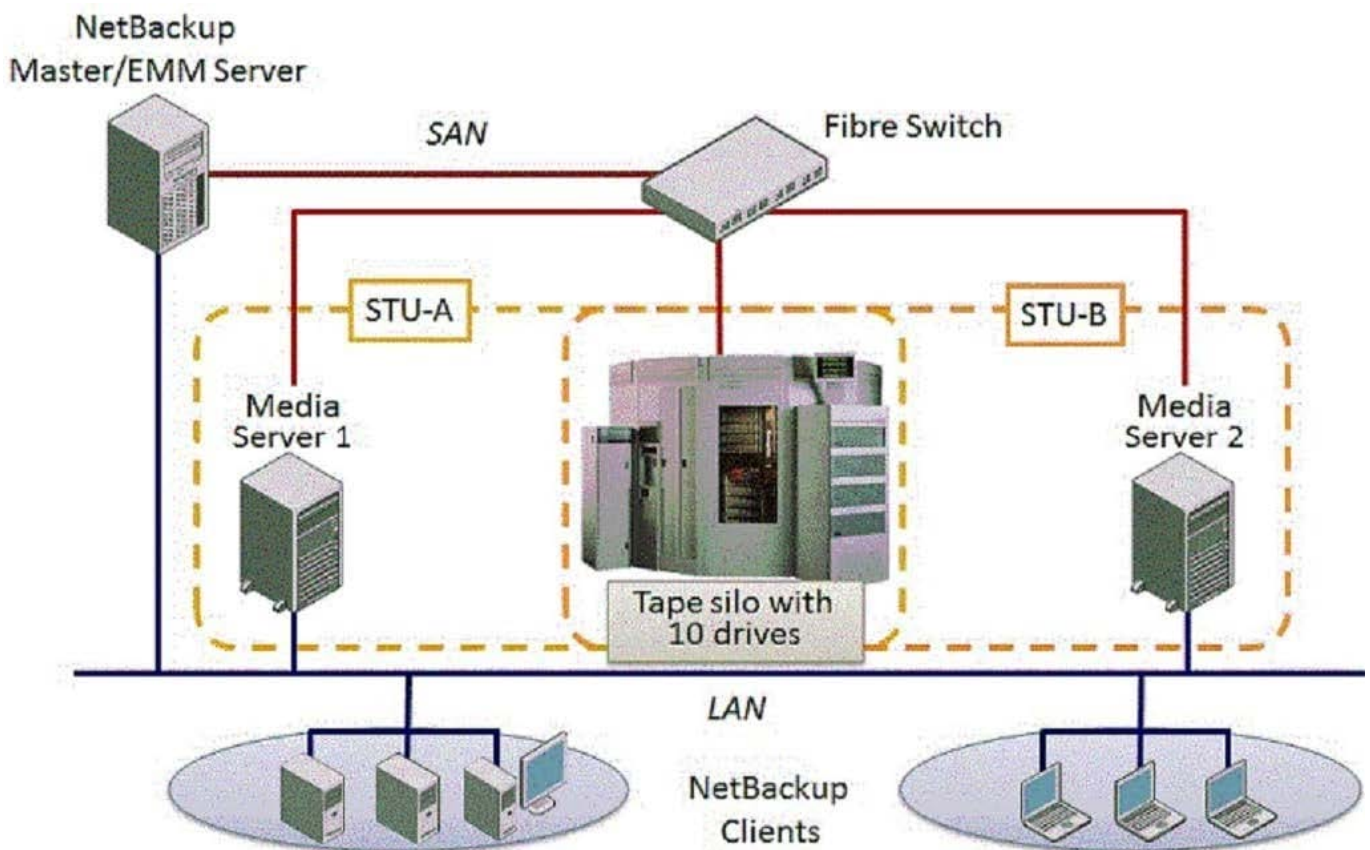
An administrator needs to back up 100 clients using 10 LTOS tape drives. Which policy setting will perform the backup fastest?

- A. Allow multiple data streams
- B. Limit jobs per policy
- C. Media multiplexing
- D. Use Accelerator

Correct Answer: C

QUESTION 2

Refer to the exhibit.



Two media servers, sharing a library with 10 tape drives, exist in the NetBackup 7.7 environment displayed in the exhibit. Both weekly full and daily differential incremental backups need to run for the clients and each schedule has a different retention period. Because of network topology, some clients back up to Media Server 1 and some back up to Media Server 2. The environment suffers from multiple status failures during the backup window. How can the administrator minimize the number of failures?

- A. increase the Media unmount delay
- B. configure media multiplexing
- C. enable backups to span tape media
- D. enable media sharing

Correct Answer: D

QUESTION 3

What is required to implement Auto Image Replication?

- A. BasicDisk or AdvancedDisk storage units and at least one Master Server
- B. OST-compliant appliances or MSDP and at least one Master Server
- C. OST-compliant appliances or MSDP and at least two Master Servers
- D. BasicDisk or AdvancedDisk storage units and at least two Master Servers

Correct Answer: C

QUESTION 4

A restore must be performed. An administrator is attempting to view the valid images for a client, but the following error occurs:

WARNING: Server does not contain any valid images.

Which two parameters may be configured incorrectly? (Select two.)

- A. Schedule type for restores
- B. Destination client for restores
- C. Server to use for backups and restores
- D. Media Server for backups and restores
- E. Policy type for restores

Correct Answer: CE

QUESTION 5

A Windows 2008 R2 64-bit client backup job hung. The NetBackup administrator cancelled the job in the Administration Console and restarted the NetBackup Client Service on the client. The administrator initiated another backup of the client, and it also hung. Which NetBackup client process should be terminated to allow new backups to occur?

- A. bpcd
- B. bpbkar
- C. bpbkar32
- D. bpbkar64

Correct Answer: C

[Latest VCS-274 Dumps](#)

[VCS-274 Study Guide](#)

[VCS-274 Braindumps](#)