

050-696^{Q&As}

Foundations of Novell Open Enterprise Server NetWare

Pass Novell 050-696 Exam with 100% Guarantee

Free Download Real Questions & Answers **PDF** and **VCE** file from:

<https://www.pass2lead.com/050-696.html>

100% Passing Guarantee
100% Money Back Assurance

Following Questions and Answers are all new published by Novell
Official Exam Center

- ⚙️ **Instant Download** After Purchase
- ⚙️ **100% Money Back** Guarantee
- ⚙️ **365 Days** Free Update
- ⚙️ **800,000+** Satisfied Customers



QUESTION 1

You're implementing a network for your company from scratch. You've just completed installing the CAT-5 wiring, RJ-45 jacks, and Fast Ethernet switches that will service your network. During the installation of OES NetWare, the only system connected to the network is the server you are performing the installation on. As you have decided to use the IPX protocol on your network, what frame type will be bound, by default, to your server's network board by the installation program?

- A. 802.2
- B. 802.3
- C. 802.5
- D. Ethernet_II
- E. Ethernet_SNAP

Correct Answer: A

QUESTION 2

The WIDGET1 OES NetWare server resides in .SLC. WIDGET. All of its associated volume objects reside in the same context. The Jjenkins user object also resides in .SLC. WIDGET. What rights does he have, by default, to the SYS:\PUBLIC directory on WIDGET1?

- A. Read
- B. Supervisor
- C. Read, Write
- D. Read, File Scan
- E. Read, Write, Create
- F. Write, Create, Erase
- G. Read, Erase, File Scan
- H. Read, Write, Create, Erase
- I. Read, Write, Create, Erase, Modify
- J. Jjenkins has no rights to SYS:\PUBLIC.
- K. Read, Write, Create, Erase, Modify, File Scan, Access Control

Correct Answer: D

QUESTION 3

Which OES NetWare module increases performance for multiprocessor systems and provides support for some hardware configurations from specific vendors?

- A. LAN Module
- B. Host Adapter Module
- C. Custom Device Module
- D. HotPlug Support Module
- E. Platform Support Module

Correct Answer: E

QUESTION 4

You just installed a new application on your OES NetWare server. You installed it in the KNOWLEDGE directory on the APPS volume. You want to create a search drive so you don't have to remember the full path to the application. Which command will do this?

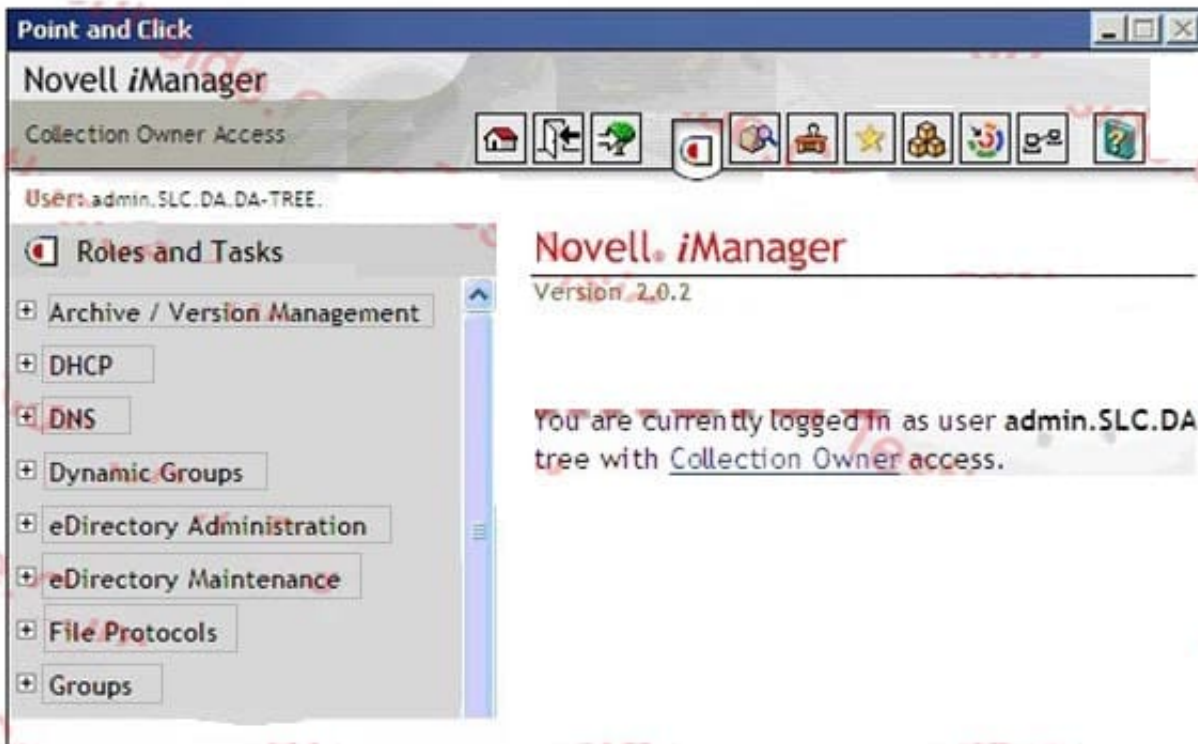
- A. SEARCH APPS:\KNOWLEDGE
- B. SEARCH ADD APPS:\KNOWLEDGE
- C. ADD SEARCH APPS:\KNOWLEDGE
- D. ADD APPS:\KNOWLEDGE SEARCH
- E. SEARCH APPS:\KNOWLEDGE -ADD

Correct Answer: B

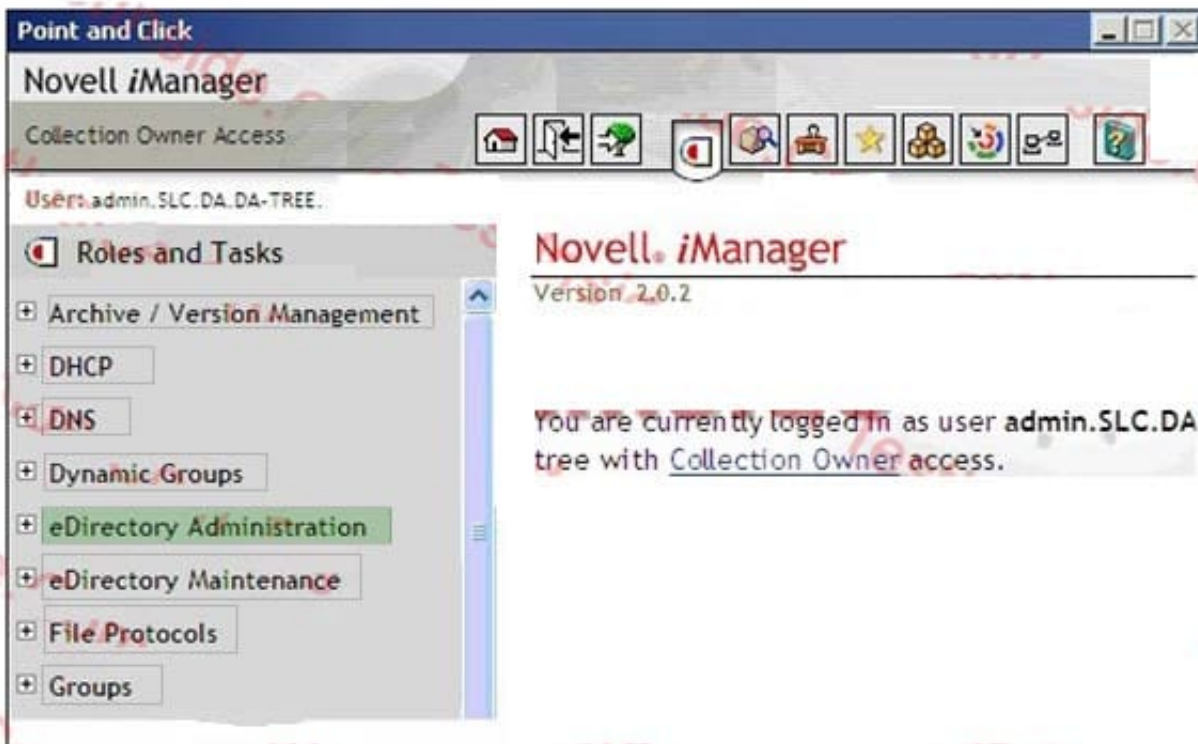
QUESTION 5

Click on the option in iManager you would use to create a new user object.

Hot Area:



Correct Answer:



QUESTION 6

Which server console command will display an OES NetWare server's IP address?

- A. IPCFG
- B. CONFIG
- C. IPCONFIG
- D. WINIPCFG
- E. TCPCONFIG

Correct Answer: B

QUESTION 7

You've just installed a NetWare 6.5 server named WIDGET1 into the WIDGETCORP-TREE. During installation, you created three server volumes:

SYS, DATA, and SHARED.

What is the default name that will be assigned to these volumes' associated Volume objects in the WIDGETCORP-TREE eDirectory tree?

- A. SYS, DATA, and SHARED
- B. SYS_1, DATA_1, and SHARED_1
- C. SYS_WIDGET1, DATA_WIDGET1, and SHARED_WIDGET1
- D. WIDGET1_SYS, WIDGET1_DATA, and WIDGET1_SHARED
- E. SYS_WIDGETCORP, DATA_WIDGETCORP, and SHARED_WIDGETCORP
- F. WIDGETCORP_SYS, WIDGETCORP_DATA, and WIDGETCORP_SHARED

Correct Answer: D

QUESTION 8

You've made several changes to your OES NetWare server's AUTOEXEC.NCF file. You need to reload the operating system to put those changes into effect. Click the Remote Manager option you would use to do this.

Correct Answer: Down/Restart

QUESTION 9

You're designing your organization's eDirectory tree. You have decided to name your tree ACME_CORP-TREE. You've created a Country object below the tree root and named it US. Within C=US, you've created four Organization objects for each of your organization's functional divisions. To ease administration, you've decided to place your Admin user object directly below the tree root. Will this design work?

- A. Yes, all eDirectory rules have been observed.
- B. No, you can't use an underscore in the tree name.
- C. No, User objects can't reside directly below the tree root .
- D. No, Country objects can't reside directly below the tree root.
- E. No, Country objects must use the full name of the country they represent, not its abbreviation.
- F. No, if you use Country objects, the next level down the tree must represent geographic locations, not organizational divisions.

Correct Answer: C

QUESTION 10

While installing OES NetWare, you decide to use a customized Server ID instead of the default value that was automatically generated by the installation program. Which is a valid Server ID that you could use?

- A. DABEFE01
- B. BAD0197J
- C. 0001FFFM
- D. 102788903
- E. CAFEFEEEDA

Correct Answer: A

QUESTION 11

Which are components of a Novell iPrint system? (Choose 2.)

- A. Broker

- B. Manager
- C. Print Queue
- D. Print Server
- E. Print Queue Operator

Correct Answer: AB

QUESTION 12

Which services does the iPrint Broker provide? (Choose 3.)

- A. Print Monitor Service
- B. Agent Monitor Service
- C. PCL Translation Service
- D. Service Registry Service
- E. Event Notification Service
- F. PostScript Conversion Service
- G. Resource Management Service
- H. Print Queue Management Service

Correct Answer: DEG

QUESTION 13

Which directories does Novell recommend you implement to organize your NetWare server's file system? (Choose 3.)

- A. Shared directories.
- B. ZENworks profile directories.
- C. iFolder data directories on SYS.
- D. An iPrint spooling directory on SYS.
- E. User home directories on a volume other than SYS.
- F. A directory named ETC in each user's home directory for configuration files.

Correct Answer: ABE

QUESTION 14

You are considering implementing iPrint on your network. Your network has 3 NetWare servers in the WIDGET-TREE eDirectory tree. The servers reside in separate eDirectory contexts. The network is configured to use the IPX protocol. The workstations in your organization run Windows XP Professional and Linux. Can you use iPrint in this environment?

- A. Yes, all prerequisites have been met.
- B. No, iPrint doesn't support Linux workstations.
- C. No, iPrint is not compatible with the IPX protocol.
- D. No, iPrint is not compatible with Windows XP Professional.
- E. No, you can only implement iPrint on servers that reside in the same eDirectory context.

Correct Answer: C

QUESTION 15

Your OES NetWare server is experiencing problems during startup. You suspect the problem lies with a command in the AUTOEXEC.NCF file. You want to boot the server without processing the AUTOEXEC.NCF file.

Which command can be entered from the DOS prompt to start the operating system without executing AUTOEXEC.NCF?

- A. SERVER
- B. SERVER -S
- C. SERVER -NA
- D. SERVER -NS
- E. SERVER -NOAUTO

Correct Answer: C