

# 101-01<sup>Q&As</sup>

Riverbed Certified Solutions Associate

## Pass Riverbed 101-01 Exam with 100% Guarantee

Free Download Real Questions & Answers **PDF** and **VCE** file from:

<https://www.pass2lead.com/101-01.html>

100% Passing Guarantee  
100% Money Back Assurance

Following Questions and Answers are all new published by Riverbed  
Official Exam Center

-  **Instant Download** After Purchase
-  **100% Money Back** Guarantee
-  **365 Days** Free Update
-  **800,000+** Satisfied Customers



### QUESTION 1

An employee who has just installed Steelhead Mobile onto her workstation notices that she never gets any reduction. It always says 0%.

The status of the Mobile client appears to be:

Optimization State: Healthy

Controller Status: Connected: Branch

The reason she is seeing 0% reduction statistics is: A. Location Awareness is in effect

B. The Steelhead appliance in the branch office has currently failed

C. There are no more Steelhead Mobile licenses available

D. The Steelhead Mobile Controller is not available as it has been relocated to a branch office

E. Steelhead Mobile does not work on workstations, only laptops

Correct Answer: A

---

### QUESTION 2

When configuring the Steelhead Mobile client package, the amount of disk space allocated to the datastore for a Steelhead Mobile client is configured in what part of the configuration?

A. Endpoint policy

B. Authentication policy

C. Acceleration policy

D. Peering policy

Correct Answer: A

---

### QUESTION 3

When enabling the IPSec feature on the Steelhead appliances:

A. Both optimized and pass-through traffic are encrypted

B. Only optimized traffic is encrypted

C. IPSec encrypted traffic is optimized

D. Only control traffic is encrypted, not user traffic

Correct Answer: B

---

**QUESTION 4**

On a remote Steelhead appliance, what is the easiest way to tell what model of Steelhead appliance you are working with using the Management Console (GUI)?

- A. On the Home page of the Steelhead appliance
- B. Go to Configure > Optimization > General Service Settings
- C. Use the "show module" CLI command
- D. Go to Reports > Maintenance > System Info
- E. Go to Configure > Configurations > Boot Order Info

Correct Answer: A

---

**QUESTION 5**

A customer is marking QoS between the Steelhead appliances based on the application (port number) and IP addresses being used. What is the recommended WAN visibility mode?

- A. Tunnel mode
- B. Port Transparency
- C. Full Transparency
- D. SSL mode

Correct Answer: C

---

**QUESTION 6**

It is possible to backup your RSP slots using. (Select 2)

- A. ftp
- B. http
- C. scp
- D. https
- E. tftp

Correct Answer: AC

---

**QUESTION 7**

You need to purchase a Steelhead appliance model for one of your engineering branch offices. Below are the requirements that need to be met:

Which of the following models will be the most appropriate for this branch office?

- A. Steelhead 2050-M
- B. Steelhead 5050-M
- C. Steelhead 550-M
- D. Steelhead 550-H
- E. Steelhead 250-H

Correct Answer: A

---

**QUESTION 8**

The Central Management Console appliance can scale to support a range of Steelhead appliances and is available in the following physical form factor(s):

- A. Desktop, 1U and 3U
- B. 1U and 3U
- C. 3U only
- D. 1U only
- E. 1U, 2U, 3U

Correct Answer: D

---

**QUESTION 9**

Which of the following factors are important to consider when sizing a Steelhead appliance? (Select 3)

- A. Number of simultaneous optimized connections
- B. The maximum optimized WAN bandwidth
- C. The size of datastore
- D. The number of applications used by the enterprise

Correct Answer: ABC

---

**QUESTION 10**

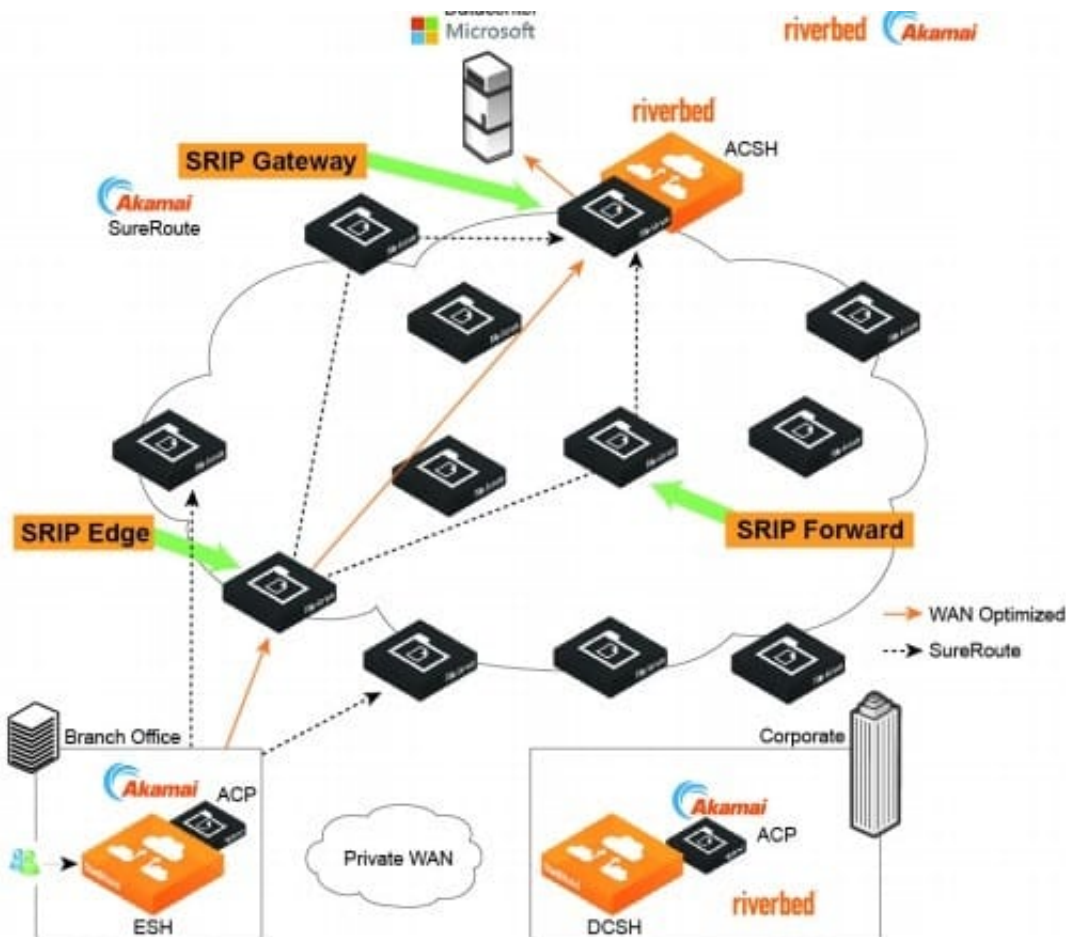
Which of the following correctly describe the two topology deployment modes of SteelHead SaaS? (Select two.)

- A. In direct mode, the cloud optimized traffic is encapsulated at the branch-side SteelHead appliance.
- B. Direct mode cannot be used if the internet traffic exit points is centralized at the customer data center and not available from the branch.
- C. In backhaul mode the cloud-optimized traffic is encapsulated at the data center but the SSL optimization starts at the branch.
- D. Backhaul mode allows to optimize traffic to the cloud from the data center without the need of a branch SteelHead.

Correct Answer: AC

A: In direct mode, the ESH appliance encapsulates the traffic and sends it directly to a server in the Akamai (Branch Office xample) network. Akamai SureRoute optimization technology ensures that the traffic is forwarded through the Akamai network along the fastest path toward its destination at the data center hosting the SaaS application.

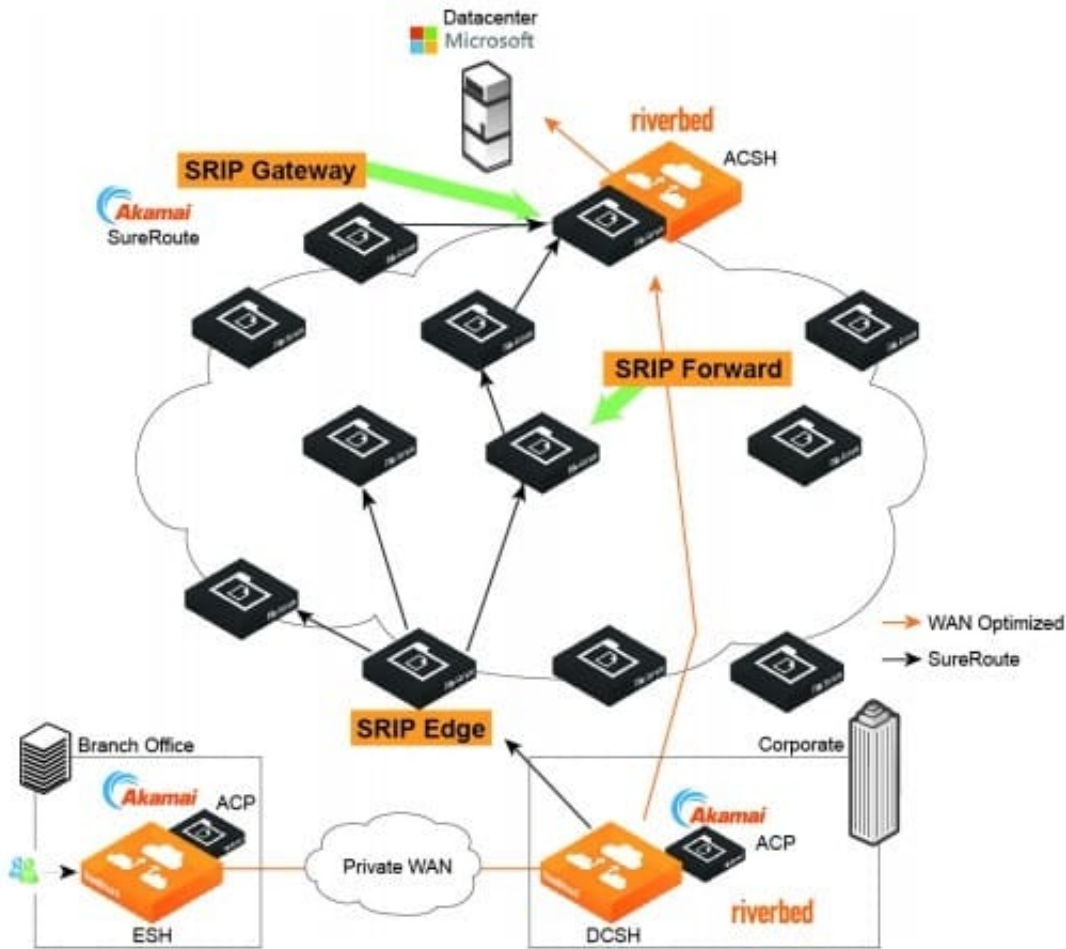
Figure: Example of Direct Branch Internet Deployment C: Back-hauled Internet Deployment In this topology, the branch does not have its own connection to the Internet. All traffic directed to the Internet is back-hauled over a private WAN or VPN to the organization's data center.



Although the DCSH encapsulates the traffic, it plays no role in the SSL optimization process. SSL optimization still takes place between the ESH appliance and the ACSH. Ensure that you establish the SSL peering trust between them.

Figure: Example of Back-hauled Internet Deployment References: SteelHeadSaaS User's Guide, RiOS Version 9.1,

July 2015, pages 8-9



**QUESTION 11**

To help secure the server private key on the server-side Steelhead appliance, which of the following features can be used?

- A. TACACS+ authentication
- B. RADIUS authentication
- C. Secure Vault
- D. Datastore encryption

Correct Answer: C

**QUESTION 12**

By default, when a SteelHead fails, either by power loss or optimization service failure, the appliance:

- A. Blocks all traffic.

- B. Routes all traffic.
- C. Passes through all traffic.

Correct Answer: C

---

**QUESTION 13**

What is the CLI command for starting the Configuration Wizard?

- A. # configuration wizard start
- B. (config) # configuration jump-start
- C. # configuration start
- D. (config) # wizard start
- E. restart clean

Correct Answer: B

---

**QUESTION 14**

A customer has purchased 30 Steelhead appliances. Which product(s) can be used to ease the deployment of these Steelhead appliances?

- A. Riverbed Steelhead Management Console
- B. Microsoft SCCM
- C. Riverbed Cascade
- D. Riverbed Central Management Console
- E. All of the above

Correct Answer: D

---

**QUESTION 15**

When optimizing MAPI, it's important that ALL sessions between client and server are optimized by the same SteelHeads. If a SteelHead goes into admission control that could mean some sessions are passed through. What can you configure to protect against this?

- A. Disable admission control on the client side SteelHead.
- B. Reduce the keep-alive for MAPI sessions.
- C. Configure alerts to be sent when the SteelHead nears admission control.

D. MAPI based admission control can be used.

Correct Answer: C

Example: Issue: Outlook clients are experiencing issues with connectivity through the Riverbed Steelhead Appliance. Solution: Outlook can open multiple connections to an Exchange server, and Outlook can break if some connections are optimized while others are not, and these situations can occur when the Steelhead reaches Admission Control. RiOS 6.1 has implemented new "MAPI-specific admission control" alarm which is meant to prevent MAPI connections from breaking or hanging if approaching that threshold.

Note: The MAPI protocol uses several TCP sessions between the client and the server. When doing Latency Optimization on the MAPI protocol, all these TCP sessions between that client and that server need to be optimized between the same two Steelhead appliances. When one of the Steelhead appliances is close to admission control, there is a chance that not all these TCP sessions will become optimized, with a bad result for the client. To overcome this possibility, you can configure the Steelhead appliance to not do MAPI Latency Optimization when it is close to admission control.

References: [http://h20564.www2.hp.com/hpsc/doc/public/display?docId=emr\\_na-c02948720&lang=en&cc=us](http://h20564.www2.hp.com/hpsc/doc/public/display?docId=emr_na-c02948720&lang=en&cc=us)

[Latest 101-01 Dumps](#)

[101-01 Exam Questions](#)

[101-01 Braindumps](#)