

# 1Y0-201<sup>Q&As</sup>

Managing Citrix XenDesktop 7.6 Solutions exam

## Pass Citrix 1Y0-201 Exam with 100% Guarantee

Free Download Real Questions & Answers **PDF** and **VCE** file from:

<https://www.pass2lead.com/1y0-201.html>

100% Passing Guarantee  
100% Money Back Assurance

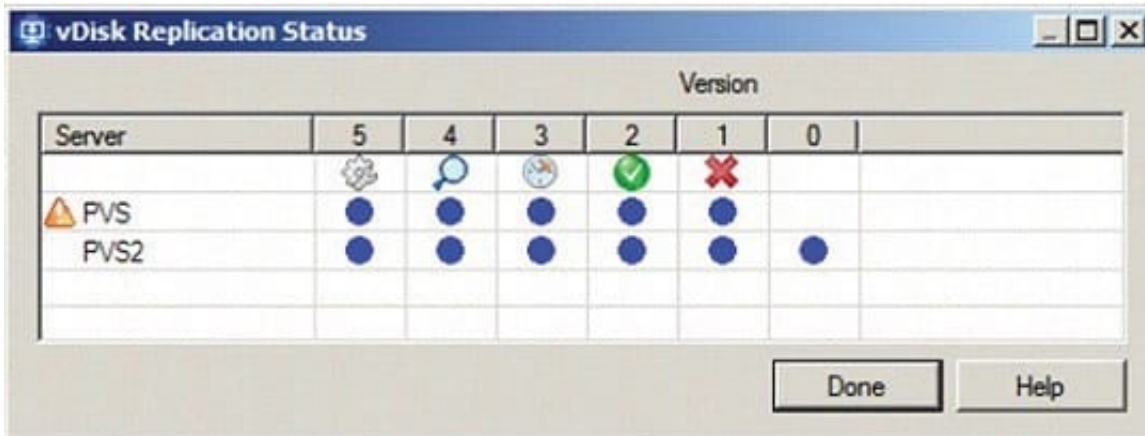
Following Questions and Answers are all new published by Citrix  
Official Exam Center

- ⚙️ **Instant Download** After Purchase
- ⚙️ **100% Money Back** Guarantee
- ⚙️ **365 Days** Free Update
- ⚙️ **800,000+** Satisfied Customers



**QUESTION 1**

Scenario: A Citrix Administrator needs to replicate a vDisk between two production Provisioning Services servers named PVS and PVS2. The Replication Status dialog box shows an orange warning signal with a message. Click on the Exhibit button to view the dialog box.



What could be the cause of this issue?

- A. The SOAP service is NOT running on the PVS server.
- B. The server time is NOT configured correctly on the PVS and PVS2 servers.
- C. The Provisioning Services server does NOT have access to one of the vDisk locations.
- D. The network card configurations on the PVS server do NOT match the configurations on the PVS2 server.

Correct Answer: C

**QUESTION 2**

Scenario: Due to changes in the network infrastructure, the IP addresses of the Delivery Controllers will be changing.

There are 2000 Desktop OS machines in the environment.

What should a Citrix Administrator do to reduce the impact of the IP address changes on the environment?

- A. Update the beacons in StoreFront to reflect the updated IP addresses.
- B. Change the DNS entries for the Delivery Controllers to the new IP addresses.
- C. Run the Provisioning Services Configuration Wizard and update the IP addresses of the Delivery Controllers.
- D. Remove the Delivery Controller from the site, change the host file entries, and add the Delivery Controller back to the site.

Correct Answer: B

### QUESTION 3

Scenario: A Citrix Administrator manages a XenDesktop environment where Machine Creation Services is used to create and deploy Server and Desktop OS machines. After an application update on the master image for the Desktop OS machines, users report functionality issues with their Desktop OS machines. What should the administrator do to resolve the reported issue?

- A. Reset user profiles using Citrix Director.
- B. Select 'Revert to' in the Snapshots menu in XenServer.
- C. Restart the Desktop OS machines using Citrix Director.
- D. Use the 'Rollback Machine Update' option in Citrix Studio.

Correct Answer: D

---

### QUESTION 4

Scenario: A Citrix Administrator updates all of the machines within a Delivery Group. After the update, an application stops working. The IT manager tells the administrator to revert all machines to the previous image. How should the administrator revert all machines to the previous image?

- A. By selecting 'Rollback machine update' for the Delivery Group
- B. By deleting the snapshot associated with the template virtual machine
- C. By selecting 'Rollback machine update' for the Session Machine Catalog
- D. By deleting the difference disks of the virtual machines within the Delivery Group

Correct Answer: C

---

### QUESTION 5

A Citrix Administrator returns from vacation to find that during peak logon times, users are experiencing extremely slow login times, with the typical login taking over 120 seconds. How should the administrator generate the information needed to determine the changes that have led to this issue?

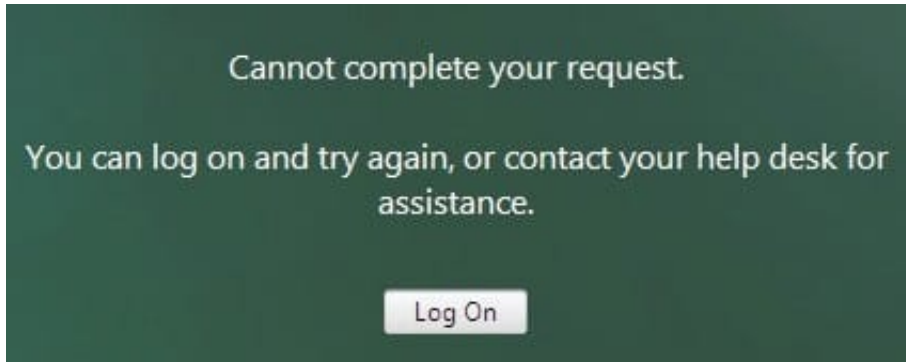
- A. Launch the Create Custom Report wizard from Citrix Studio.
- B. Run a custom report for the Delivery Group from Citrix Studio.
- C. Go to the C:\XDLogs and print the log file on the Delivery Controller.
- D. Create a custom view and print the results from the Delivery Controller.

Correct Answer: A

---

### QUESTION 6

Scenario: When accessing Citrix Receiver for Web on the StoreFront through NetScaler Gateway, a user receives an error. Click on the Exhibit button to view the error.



Users NOT connecting through NetScaler Gateway are successful. What is the likely cause of this error?

- A. The callback URL configured on StoreFront is incorrect.
- B. The NetScaler Gateway CANNOT resolve the StoreFront FQDN.
- C. The StoreFront server CANNOT resolve the Delivery Controller FQDN.
- D. The '\\User name and password\\' authentication method is NOT enabled on the StoreFront server.

Correct Answer: C

#### QUESTION 7

A Citrix Administrator needs to obtain logs from Machine Creation Services. Which .config file should the administrator manually modify to enable logging?

- A. BrokerService.exe.Config
- B. Citrix.Configuration.SdkWcfEndpoint.exe.Config
- C. Citrix.MachineIdentity.SdkWcfEndpoint.exe.Config
- D. Citrix.MachineCreation.SdkWcfEndpoint.exe.Config

Correct Answer: D

#### QUESTION 8

A Citrix Administrator is in the process of building new virtual machines using Machine Creation Services within a XenDesktop site.

How could the administrator ensure that all new virtual machines have the same individual settings for memory and CPU at the time the machines are built?

- A. Use a built-in hosting template.
- B. Create a custom template in the hosting environment.
- C. Create a master target device in the hosting infrastructure.
- D. Set the master device as a template in Provisioning Services.

Correct Answer: C

---

#### QUESTION 9

Which three options could a Citrix Administrator enable for users who connect to their provisioned desktop from Smart phones and tablets to improve their experience? (Choose three.)

- A. Legacy Graphics Mode
- B. Remote the combo box
- C. Automatic keyboard display
- D. Enhanced Desktop Experience
- E. Launch touch-optimized desktop

Correct Answer: BCE

---

#### QUESTION 10

Which report could a Citrix Administrator run to determine the number of users that have used Microsoft Visio in the last two months?

- A. Logon Performance
- B. ConcurrentSessions
- C. Hosted Application Usage
- D. Failed Server OS Machines

Correct Answer: D

---

#### QUESTION 11

Scenario: A Citrix Administrator needs to add a new application to an existing XenDesktop Delivery Group. The application must only be available to the Human Resources (HR) user group. How could the administrator meet the requirements of the scenario?

- A. By creating a new Group Policy Object and setting security to the HR user group
- B. By editing the application in Citrix Studio and limiting the visibility to the HR user group

- C. By creating a new Citrix HDX Policy in Citrix Studio and filtering the policy to allow access to the HR user group only
- D. By creating a new application folder in Citrix Studio for the HR user group and moving the application to the new folder

Correct Answer: B

---

### QUESTION 12

Scenario: Human Resources has published training videos that all employees must watch. Employees are encountering buffering delays and poor video quality when trying to watch the videos. Which tool could a Citrix Administrator use to identify the cause of this issue?

- A. Citrix Studio
- B. HDX Monitor
- C. CDF Control
- D. Task Manager

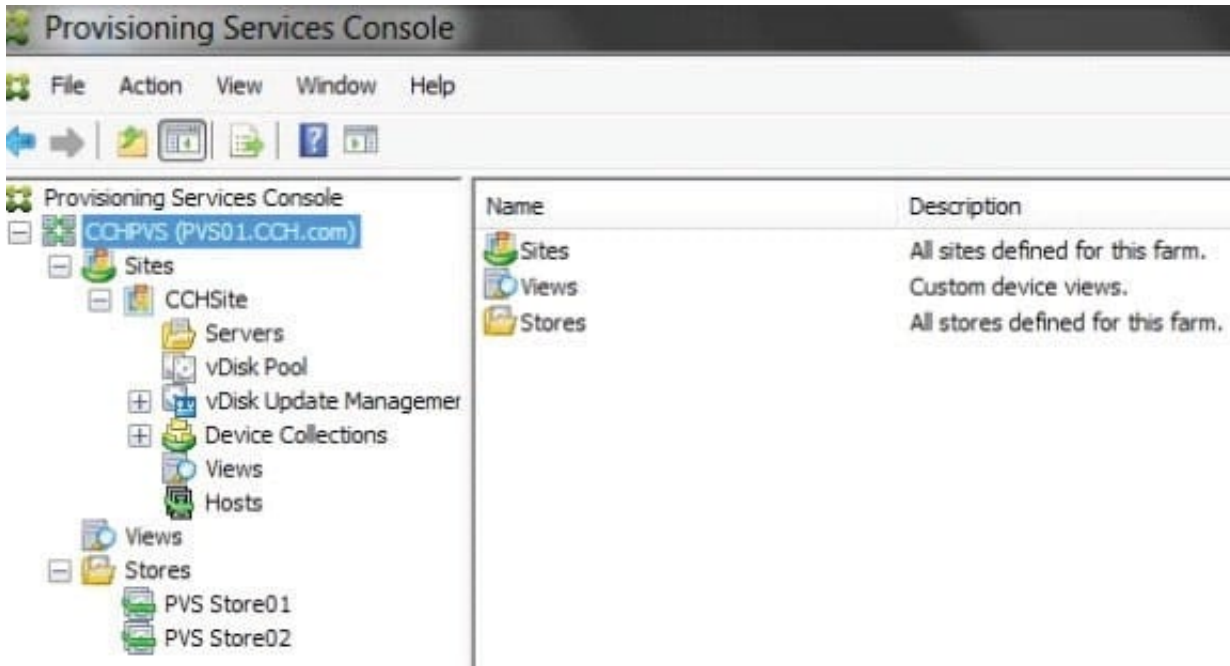
Correct Answer: B

---

### QUESTION 13

SIMULATION Scenario: Members of the HR user group at CCH need access to desktops running Windows 8. The desktops provided to HR users must be in a separate device collection named HR. As part of a pilot, a Citrix Administrator must use the Provisioning Services Console to create the device collection and initially four target devices with plans to add 20 more. The target devices named Win801T Win802. Win803 and Win804 should be assigned the CCH\_Win8 vDisk and those devices should be assigned to the HR OU. XenDesktop is NOT being used for the HR team at the moment. The hypervisor information for the environment is: XenServer IP Address: 192.168.10.5 Username: root Password: Password 1 Tasks:

1.  
Create a device collection named HR.
2.  
Create four target devices named Win801, Win802. Win803 and Win804, and add the target devices to the HR device collection.



3. Ensure the target devices are configured to meet the requirements outlined in the scenario.

Correct Answer:

- 1) In Provisioning Services Console, right click on "Device" and click on Create Device Collection.
- 2) In the "General" type in the name "HR" and click on OK.
- 3) Right click on "CCHSite" node and select Streamed Virtual Machine Setup.
- 4) From the "Hypervisor connection" dialog window type in the Hypervisor IP address, username and password provided then click on Next.
- 5) From the "Virtual machine template" dialog window select the correct virtual machine template then click on Next.
- 6) From the "vDisk" dialog window select CCH\_Win8 then click on Next.
- 7) From the "Collection" dialog window select HR from the drop-down window then click on Next.
- 8) From the "Virtual Machines" dialog window, increase the "Number of virtual machines to create" to 4 then click on Next.
- 9) From the "Active Directory" dialog window verify "Create new accounts" is selected then click on Next.
- 10) From the "Active Directory accounts and location" dialog windows select the HR OU; in the "Account naming scheme" field type in the "Basename#" of Win8##, select 0-9 from the drop down to the right, then click on Next.
- 11) From the "Summary" dialog windows click on Finish.
- 12) When the devices are finished creating click on Done.
- 13) You can verify the new devices were created correctly in the HR Device Collection you created initially.

**QUESTION 14**

Scenario: A high number of Desktop OS machines are displaying as '\\Unregistered\\' in Citrix Studio. However, Desktop OS machines that are registered are functioning as expected. What is the likely cause of this issue?

- A. The Delivery Controller is unable to register with DNS.
- B. The Delivery Controller is NOT configured to trust XML requests.
- C. A Digital certificate is NOT installed on the Desktop OS machines.
- D. The affected Desktop OS machines are unable to register with DNS.

Correct Answer: D

---

**QUESTION 15**

Scenario: Users of the Finance group lost access to their local drive through their desktop-hosted applications. Due to this issue, those users missed a critical deadline. Now management has requested that a Citrix Administrator provide a report of recent changes to the environment.

Which tool could the administrator use to generate a report of recent changes to the environment?

- A. Event logs
- B. StoreFront
- C. Citrix Studio
- D. Citrix Director

Correct Answer: C

[Latest 1Y0-201 Dumps](#)

[1Y0-201 PDF Dumps](#)

[1Y0-201 Practice Test](#)