

1Z0-071^{Q&As}

Oracle Database 12c SQL

Pass Oracle 1Z0-071 Exam with 100% Guarantee

Free Download Real Questions & Answers **PDF** and **VCE** file from:

<https://www.pass2lead.com/1z0-071.html>

100% Passing Guarantee
100% Money Back Assurance

Following Questions and Answers are all new published by Oracle
Official Exam Center

- ⚙️ **Instant Download** After Purchase
- ⚙️ **100% Money Back** Guarantee
- ⚙️ **365 Days** Free Update
- ⚙️ **800,000+** Satisfied Customers



QUESTION 1

Examine the data in the CUST_NAME column of the CUSTOMERS table: You want to display the CUST_NAME values where the last name starts with Mc or MC.

```
CUST_NAME
-----
Renske Ladwig
Jason Mallin
Samuel McCain
Allan MCEwen
Irene Mikkilineni
Julia Nayer
```

Which two WHERE clauses give the required result?

- A. WHERE INITCAP(SUBSTR(cust_name, INSTR(cust_name, '\ ') + 1)) LIKE 'Mc%'
- B. WHERE SUBSTR(cust_name, INSTR(cust_name, '\ ') + 1) LIKE 'Mc%'
- C. WHERE SUBSTR(cust_name, INSTR(cust_name, '\ ') + 1) LIKE 'Mc%' OR 'MC%'
- D. WHERE UPPER(SUBSTR(cust_name, INSTR(cust_name, '\ ') + 1)) LIKE UPPER('MC%')
- E. WHERE INITCAP(SUBSTR(cust_name, INSTR(cust_name, '\ ') + 1)) LIKE 'MC%'

Correct Answer: BD

QUESTION 2

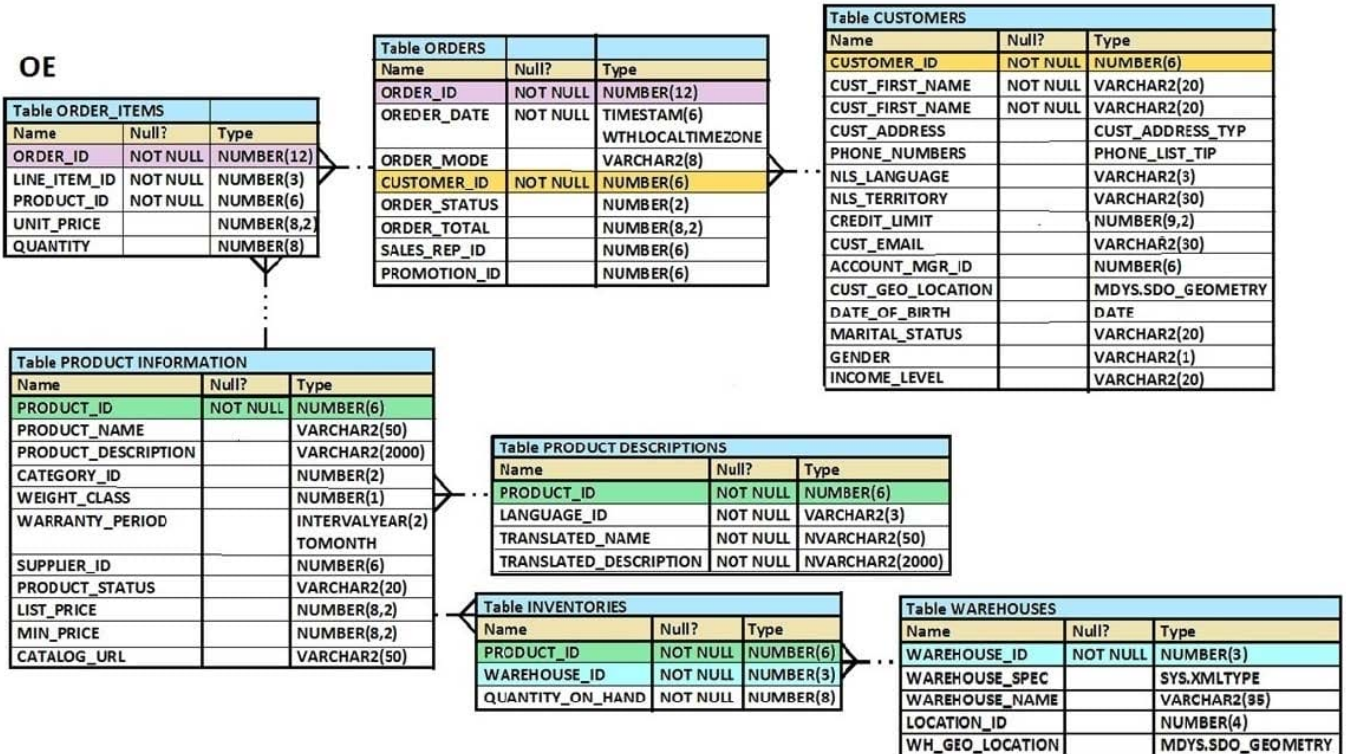
Which two are true about the MERGE statement?

- A. The WHEN NOT MATCHED clause can be used to specify the deletions to be performed.
- B. The WHEN NOT MATCHED clause can be used to specify the inserts to be performed.
- C. The WHEN MATCHED clause can be used to specify the inserts to be performed.
- D. The WHEN NOT MATCHED clause can be used to specify the updates to be performed.
- E. The WHEN MATCHED clause can be used to specify the updates to be performed.

Correct Answer: BE

QUESTION 3

View the Exhibit and examine the structure of the ORDER_ITEMS table.



Examine the following SQL statement:

```
SELECT order_id, product_id, unit_price
FROM order_items
WHERE unit_price =
(SELECT MAX(unit_price)
FROM order_items
GROUP BY order_id);
```

You want to display the PRODUCT_ID of the product that has the highest UNIT_PRICE per ORDER_ID. What correction should be made in the above SQL statement to achieve this?

- A. Remove the GROUP BY clause from the subquery and place it in the main query
- B. Replace = with the >ANY operator
- C. Replace = with the >ALL operator
- D. Replace = with the IN operator

Correct Answer: D

QUESTION 4

Which three items does a direction of a relationship contain?

- A. an attribute
- B. a cardinality
- C. label
- D. an optionality
- E. a unique identifier
- F. an entity

Correct Answer: ABF

QUESTION 5

The ORDERS table has a column ORDER_DATE of date type DATE The default display format for a date is DD-MON-RR Which two WHERE conditions demonstrate the correct usage of conversion functions?

- A. WHERE order_date > TO_CHAR(ADD_MONTHS(SYSDATE, 6), 'MON DD YYYY');
- B. WHERE TO_CHAR(order_date, 'MON DD YYYY') = 'JAN 20 2019';
- C. WHERE order_date > TO_DATE('JUL 10 2018', 'MON DD YYYY');
- D. WHERE order_date IN (TO_DATE ('Oct 21 2018', 'MON DD YYYY'), TO_CHAR('Nov 21 2018', 'MON DD YYYY'));
- E. WHERE order_date > TO_DATE(ADD_MONTHS(SYSDATE,6), 'MON DD YYYY');

Correct Answer: BC

QUESTION 6

Examine the data in the COLORS table:

RGB_HEX VALUE	COLOR NAME
FE0000	red
00FF00	green
0000FF	blue

Examine the data in the BRICKS table:

BRICK ID	COLOR_RGB_HEX_VALUE
1	FF0000
2	00FF00
3	FFFFFF

Which three privileges can be restricted to a subset of columns in a taS?

- A. SELECT. FROM bricks b RIGHT JOIN colors c ON b. color _rgb_ hex_ value = c. rgb hex_ value;
- B. SELECT EROM colors C LEFT JOIN bricks USING (rgb _ hex_ value) ;
- C. SELECT FROM bricks b FULL JOIN colors C ON b. color rgb _ hex_ value = c. rgb _hex_ value;
- D. SELECT * EROM bricks | b JOIN colors C ON b. color_ rgb_ hex_ value =c. rgb _hex value;
- E. SELECT EROM colors C LEET JOIN bricks b ON b. color_ rgb_ hex value = c. rgb. hex. value WHERE b. brick_ id > 0;

Correct Answer: AC

QUESTION 7

Which two are true about external tables that use the ORACLE _DATAPUMP access driver?

- A. Creating an external table creates a directory object.
- B. When creating an external table, data can be selected only from a table whose rows are stored in database blocks.
- C. When creating an external table, data can be selected from another external table or from a table whose rows are stored in database blocks.
- D. Creating an external table creates a dump file that can be used by an external table in the same or a different database.
- E. Creating an external table creates a dump file that can be used only by an external table in the same database.

Correct Answer: CD

QUESTION 8

Which three privileges can be restricted to a subset of columns in a table?

- A. ALTER
- B. REFERENCES
- C. UPDATE
- D. SELECT

E. INDEX

F. INSERT

G. DELETE

Correct Answer: BCF

QUESTION 9

Examine these requirements:

1.
Display book titles for books purchased before January 17, 2007 costing less than 500 or more than 1000.

2.
Sort the titles by date of purchase, starting with the most recently purchased book.

Which two queries can be used?

- A. `SELECT book_title FROM books WHERE (price < 500) AND (purchase_date < '2007-01-17')`
- B. `SELECT book_title FROM books WHERE (price < 500 OR price > 1000) AND (purchase_date < '2007-01-17')`
- C. `SELECT book_title FROM books WHERE (price NOT BETWEEN 500 AND 1000) AND (purchase_date < '2007-01-17')`
- D. `SELECT book_title FROM books WHERE (price BETWEEN 500 AND 1000) AND (purchase_date < '2007-01-17')`