

1Z0-997-21^{Q&As}

Oracle Cloud Infrastructure 2021 Architect Professional

Pass Oracle 1Z0-997-21 Exam with 100% Guarantee

Free Download Real Questions & Answers **PDF** and **VCE** file from:

<https://www.pass2lead.com/1z0-997-21.html>

100% Passing Guarantee
100% Money Back Assurance

Following Questions and Answers are all new published by Oracle
Official Exam Center

-  **Instant Download** After Purchase
-  **100% Money Back** Guarantee
-  **365 Days** Free Update
-  **800,000+** Satisfied Customers



QUESTION 1

To serve web traffic for a popular product, your cloud engineer has provisioned four BM.Standard2.52 instances, event spread across two availability domains in the us-asburn-1 region: LoadBalancer is used to deliver the traffic across instances. After several months, the product grows even more popular and you need additional compute capacity. As a result, an engineer provisioned two additional VM.Standard2.8 instances. You register the two VM. Standard2. 8 Instances with your load Balancer Backend sot and quickly find that the VM Standard2.8 Instances running at 100% of CPU utilization but the BM.Standard2 .52 instances have significant CPU capacity that\\'s unused. Which option is the most cost effective and uses instances capacity most effectively?

- A. Configure your Load Balance, with weighted round robin policy to distribute traffic to the compute instances, with more weight assigned to bare metal instances.
- B. Configure Autoscaling instance pool with LoadBalancer to add up to 3 more BM.Standard2.52 Instances when triggered. Shut off VM.Standard2.8 instances.
- C. Route traffic to BM.Standard2.52 and VM Standard2.8 instances directly using DNS and Health Checks. Shut off the load Balances.
- D. Configure LoadBalancer with two VM Standard2.8 instances and use Autoscalling Instant pool to add up to two additional VM instances. Shut off BM.Standard2.52 instances.

Correct Answer: A

Customer have 4 BM.Standard2.52 and After several months he need additional compute capacity customer find The VM Standard2.8 Instances running at 100% of CPU utilization but the BM.Standard2 .52 instances have significant CPU capacity that unused. so the customer need to check the Load balance policy to make sure the 4 BM and VM is utilize correctly

QUESTION 2

You are working as a cloud engineer for an IoT startup company which is developing a health monitoring pet collar for dogs and cats. The company collects biometric Information of the pet every second and then sends it to Oracle Cloud Infrastructure (OCI) Your task is to come up with an architecture which will accept and process the monitoring data as well as provide complete trends and health reports to the pet owners. The portal should be highly available, durable, and scalable with an additional feature for showing real time biometric data analytics.

Which architecture will help you meet this requirement?

- A. Use OCI Streaming Service to collect the incoming biometric data. Use Oracle Functions to process the date and show the results on a real-time dashboard and store the results lo OCI Object Storage Store the data In OCI Autonomous Data warehouse (ADW) to handle analytics.
- B. Launch an open source Hadoop cluster to collect the Incoming biometrics data Use an Open source Fluentd cluster to analyze the- data me results to OCI Autonomous Transaction Processing (ADW)to handle complex analytics
- C. Create an OCI Object Storage bucket to collect the incoming biometric data from the smart pet collar Fetch the data horn OC\ Object storage to OCI Autonomous Data Warehouse (ADW) every day and run analytics Jobs with it
- D. Use OCI Streaming Service to collect the incoming biometric data. Use an open source Hadoop cluster to analyze the data horn streaming service. Store the results to OCI Autonomous Data warehouse (ADW) to handle complex analytics.

Correct Answer: A

QUESTION 3

You have decided to migrate your application to Oracle Cloud Infrastructure and use Oracle Functions to deploy your microservices.

Which monitoring metrics are available to help you calculate your total cost for using Oracle Functions per month? (Choose Two)

- A. Amount of RAM used by your functions.
- B. Length of time a function runs.
- C. Number of times a function is invoked.
- D. Amount of storage used by your functions.
- E. Network bandwidth used by your functions.

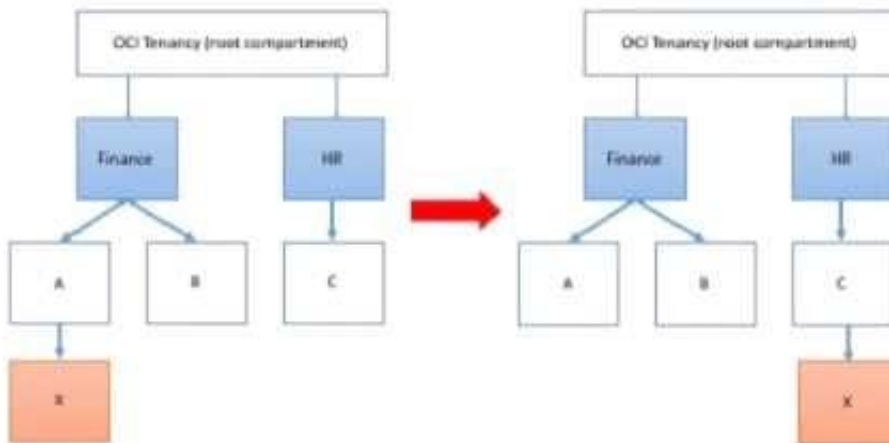
Correct Answer: BC

QUESTION 4

Your customer has gone through a recent departmental re structure. As part of this change, they are organizing their Oracle Cloud Infrastructure (OCI) compartment structure to align with the company's new organizational structure.

They have made the following change:

Compartment x is moved, and its parent compartment is now compartment c.



Policy defined in compartment A: Allow group networkadmins to manage subnets in compartment X
Policy defined in root compartment: Allow group admins to read subnets in compartment Finance:A:X
After you move the compartment, which two IAM policies would be required to ensure both groups retain the same permissions to compartment X that they had before? (Choose two.)

- A. Define a policy in the root compartment as follows: Allow group admins to manage subnets in compartment Finance:A:X
- B. Define a policy in compartment HR as follows: Allow group networkadmins to manage subnets in compartment C:X.
- C. Define a policy in the root compartment as follows: Allow group admins to read subnets in compartment HR:C:X
- D. Define a policy in compartment C as follows: Allow group networkadmins to read subnets in compartment X

Correct Answer: BC

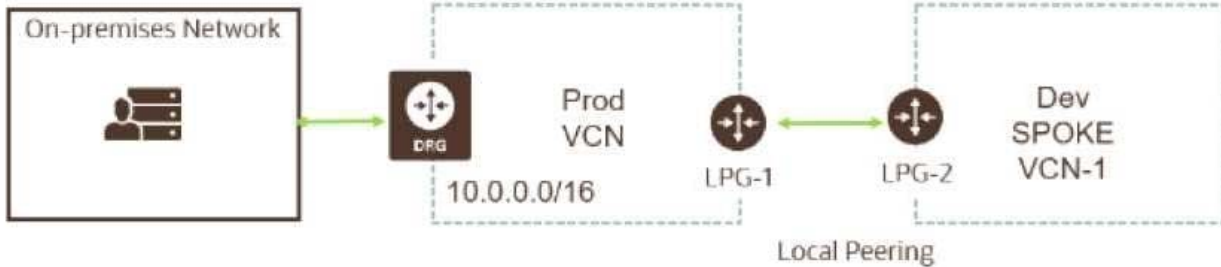
QUESTION 5

Your customer recently ordered for a 1-Gbps Fast Connect connection In ap-tokyo-1 region of Oracle Cloud Infrastructure (OCI). They will use this to connect one Virtual cloud Network (VCN) in their production (OC1) tenancy and VCN in their development OC1 tenancy. As a Solution Architect, how should you configure and architect the connectivity between on-premises and VCNs in OCI?

- A. Create two private virtual circuits on the FastConnect link. Create two Dynamic Routing Gateways, one for each VCNs. Attach the virtual circuits to the dynamic routing gateways.
- B. You cannot achieve connectivity using single FastConnect link as the production and the development VCNs are in separate tenancies. Request one more FastConnect connection.
- C. Create a single private virtual circuit over FastConnect and attach fastConnect to either of the VCN's Dynamic Routing Gateway. Use Remote Peering to peer production and development VCNs.
- D. Create a hub-VCN that uses Dynamic Routing Gateway (DRG) to communicate with on-premises network over FastConnect. Connect the hub-VCN to the production VCN spoke and with development VCN spoke, each peered via their respective local Peering Gateway (LPG)

Correct Answer: D

There's an advanced routing scenario called transit routing that enables communication between an on-premises network and multiple VCNs over a single Oracle Cloud Infrastructure FastConnect or IPsec VPN. The VCNs must be in the same region and locally peered in a hub-and-spoke layout. As part of the scenario, the VCN that is acting as the hub has a route table associated with each LPG (typically route tables are associated with a VCN's subnets).



QUESTION 6

A manufacturing company is planning to migrate their on-premises database to Oracle Cloud Infrastructure and has hired you for the migration. Customer has provided following information regarding their existing on-premises database:

Database version, database character set, storage for data staging, acceptable length of system outage.

What additional information do you need from customer in order to recommend a suitable migration method? (Choose Two)

- A. On-Premises host operating system and version.
- B. Number of active connections.
- C. Data types used in the on-premises database.
- D. Elapsed time since database was last patched.
- E. Top 5 longest running queries.

Correct Answer: AC

QUESTION 7

You are part of a project team working in the development environment created in Oracle Cloud Infrastructure (OCI). You realize that the CIDR block specified for one of the subnets in a Virtual Cloud Network (VCN) is not correct and want to delete the subnet. While deleting you get an error indicating that there are still resources that you must delete first. The error includes the OCID of the VNIC that is in the subnet. Which of the following action you will take to troubleshoot this issue?

- A. Use OCI CLI to call "network vnic" and "compute vnic-attachment" operations to find out the parent resource of the VNIC.

- B. Use OCI CLI to delete the VNIC first and then delete the subnet.
- C. Use OCI CLI to delete the subnet using -force option.
- D. Copy and paste OCID of the VNIC in the search box of the OCI Console to find out the parent resource of the VNIC.

Correct Answer: A

QUESTION 8

An online gaming application is deployed to multiple Availability Domains in the Oracle Cloud Infrastructure (OCI) us-ashburn-1 region. Considering the high volume of traffic that the gaming application handles, the company has hired you to ensure that the data stored by the application is scalable, highly available, and disaster resilient. In the event of failure, the Recovery Time Objective (RTO) and Recovery Point Objective (RPO) must be less than 2 hours. Which Disaster Recovery strategy should be used to achieve the RTO and RPO requirements in the event of a system failure?

- A. Configure hourly block volumes backups using the OCI Command Line Interface (CLI).
- B. Create a user defined backup policy with a schedule of generating daily backups for block volumes.
- C. Configure hourly block volumes backups through the OCI Storage Gateway service.
- D. Create a user defined backup policy with a schedule of generating hourly backups for block volumes.

Correct Answer: A

QUESTION 9

The Finance department of your company has reached out to you. They have customer sensitive data on compute Instances In Oracle Cloud Infrastructure (OCI) which they want to store in OCI Storage for long term retention and archival.

To meet security requirements they want to ensure this data is NOT transferred over public internet, even if encrypted.

which they want to store In OCI Object Storage fin long term retention and archival To meet security requirements they want to ensure this data is NOT transferred over public Internet, even it encrypted.

Which option meets this requirements?

- A. Configure a NAT instance and all traffic between compute In Private subnet should use this NAT instance with Private IP as the route target.
- B. Use NAT gateway with appropriate route table when transferring data. Then use NAT gateways\' toggle (on/off) once data transfer is complete.
- C. Use Service gateway with appropriate route table.
- D. Use Storage gateway with appropriate firewall rule.

Correct Answer: C

Service Gateway is virtual router that you can add to your VCN. It provides a path for private network traffic between your VCN and supported services in the Oracle Services Network like Object Storage) so compute Instances in a private subnet in your VCN can back up data to Object Storage without needing public IP addresses or access to the intern

QUESTION 10

A cloud consultant is working on implementation project on OCI. As part of the compliance requirements, the objects placed in object storage should be automatically archived first and then deleted. He is testing a Lifecycle Policy on Object Storage and created a policy as below:

```
[ { "name": "Archive_doc", "action": "ARCHIVE", "objectNameFilter": { "inclusionPrefixes": "doc" } },  
"timeAmount": 5, "timeunit": "DAYS", "isEnabled": true }, { "name": "Delete_doc", "action": "DELETE",  
"objectNameFilter": "inclusionPrefixes": [ "doc" ] 1."timeAmount": 5, "timeunit": "DAYS", "isEnabled": true }
```

What will happen after this policy is applied?

- A. All objects with names starting with "doc" will be deleted after 5 days of object creation
- B. All the objects having file extension ".doc" will be archived for 5 days and will be deleted 10 days after object creation
- C. All the objects having file extension ".doc" will be archived 5 days after object creation
- D. All the objects with names starting with "doc" will be archived 5 days after object creation and will be deleted 5 days after archival

Correct Answer: A

Object Lifecycle Management works by defining rules that instruct Object Storage to archive or delete objects on your behalf within a given bucket. A bucket's lifecycle rules are collectively known as an object lifecycle policy.

You can use a rule to either archive or delete objects and specify the number of days until the specified action is taken.

A rule that deletes an object always takes priority over a rule that would archive that same object.

QUESTION 11

Your security team has informed you that there are a number of malicious requests for your web application coming from a set of IP addresses originating from a country in Europe. Which of the following methods can be used to mitigate these type of unauthorized requests?

- A. Web Application Firewall policy using access control rules

- B. Deny rules in Virtual Cloud Network Security Group for the specific set of IP addresses.
- C. Delete Internet Gateway from Virtual Cloud Network.
- D. Deny rules in Virtual Cloud Network Security Lists for the specific set of IP addresses.

Correct Answer: A

QUESTION 12

A retail company runs their online shopping platform entirely on Oracle cloud Infrastructure (OCI). This is a 3-tier web application that includes a Mbps Load Balancer, Virtual Machine Instances for web and an Oracle DB Systems Virtual Machine. Due to unprecedented growth, they noticed an increase in the incoming traffic to their website and all users start getting 503 (Service Unavailable) errors. What is the potential problem in this scenario?

- A. The Load Balancer health check status indicates critical situation for half of the backend web servers.
- B. All the web servers are too busy and not able to answer any request from users.
- C. The Database is down hence users can not access the web site.
- D. The Traffic Management Policy is not set to load balance the traffic to the web servers.
- E. You did not configure a Service Gateway to allow connection between web servers and load balance.

Correct Answer: B

A 503 Service Unavailable Error is an HTTP response status code indicating that a server is temporarily unable to handle the request. This may be due to the server being overloaded or down for maintenance.

QUESTION 13

You are working as a solutions architect for an online retail store in Frankfurt which uses multiple compute instance VMs spread among three availability domains in the eu-frankfurt-1 region. You noticed the website is having very high traffic, so you enabled autoscaling to support your application but, you observed that one of the availability domains is not receiving any traffic. What could be wrong in this situation?

- A. Autoscaling only works with single availability domains.
- B. You have to manually add all three availability domains to your load balancer configuration.
- C. Autoscaling can be enabled for multiple availability domains only in uk-london region.
- D. Autoscaling is using an Instance Pool configured to create instances in two availability domains.
- E. You forgot to attach a load balancer to your instance pool configuration.

Correct Answer: D

Autoscaling lets you automatically adjust the number of Compute instances in an instance pool based on performance metrics such as CPU utilization. This helps you provide consistent performance for your end users during periods of high demand, and helps you reduce your costs during periods of low demand. You can associate a load balancer with an instance pool. If you do this, when you add an instance to the instance pool, the instance is automatically added to

the load balancer's backend set . After the instance reaches a healthy state (the instance is listening on the configured port number), incoming traffic is automatically routed to the new instance. Instance pools let you provision and create multiple Compute instances based off the same configuration, within the same region. By default, the instances in a pool are distributed across all fault Domains in a best-effort manner based on capacity. If capacity isn't available in one fault domain, the instances are placed in other fault domains to allow the instance pool to launch successfully. In a high availability scenario, you can require that the instances in a pool are evenly distributed across each of the fault domains that you specify. When sufficient capacity isn't available in one of the fault domains, the instance pool will not launch or scale successfully, and a work request for the instance pool will return an "out of capacity" error. To fix the capacity error, either wait for capacity to become available, or use the UpdateInstancePool operation to update the placement configuration (the availability domain and fault domain) for the instance pool. during create the instance pool you can select the location where you want to place the instances" In the Availability Domain list, select the availability domain to launch the instances in. If you want the instances in the pool to be placed evenly in one or more fault domains, select the Distribute instances evenly across selected fault domains check box. Then, select the fault domains to place the instances in.

QUESTION 14

A cost conscious fashions design company which sells bags, clothes, and other luxury items has recently decided to more all of the their on-premises infrastructure Oracle Cloud Infrastructure (OCI), One of their on-premises application is running on an NGINX server and the Oracle Database is running in a 2 node Oracle Real Application Clusters (RAC) configuration. Based on cost considerations, what is an effective mechanism to migrate the customer application to OCI and set up regular automated backups?

- A. Launch a compute Instance and run a NGINX server to host the application. Deploy a 2 node VM DB Systems with oracle RAC enabled import the on premises database to OCI VM DB Systems using oracle Data Pump and then enable automatic backups.
- B. Launch a compute Instance and run an NGINX server to host the application. Deploy Exadata Quarter Rack, enable automatic backups and import the database using Oracle Data Pump.
- C. Launch a compute Instance for both the NGINX application server and the database server. Attach block volumes on the database server compute instance and enable backup policy to backup the block volumes.
- D. Launch a Compute instance and run a NGINX Server to host the application. Deploy a 2 node VM DB Systems with Oracle RAC enabled Import the on premises database to OCI VM DB Systems using data pump and then enable automatic backup- Also, enable Oracle Data Guard on the database server

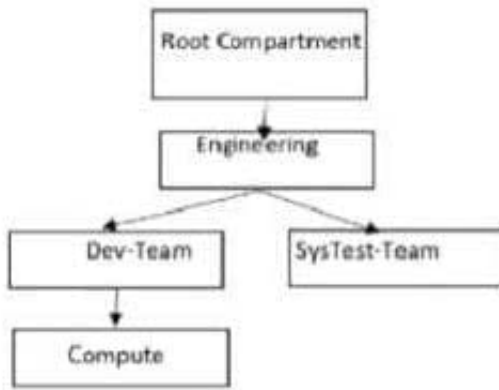
Correct Answer: A

Based on cost considerations will exclude the Exadata. and there's no need for Data Guard Cost Estimator
<https://www.oracle.com/cloud/cost-estimator.html>

Configuration Options	Pay As You Go	Monthly Flex	
Database Cloud Service - OCI	\$17,190	\$11,460	
> Database - OCI	\$17,190	\$11,460	
Oracle Database Exadata Cloud Service	\$120,000	\$80,000	
> Exadata	\$120,000	\$80,000	

QUESTION 15

You are the Solution Architect that designed this Oracle Cloud Infrastructure (OCI) compartment layout for your organization:



The development team has deployed quite a few instances under `\\Compute\\` Compartment and the operations team needs to list the Instances under the same compartment for their testing. Both teams, development and operations are part of a group called `\\Eng-group\\` You have been looking for an option to allow the operations team to list the instances without access any confidential information or metadata of resources. Which IAM policy should you write based on these requirements?

- A. Allow group Eng-group to inspect instance-family in compartment Dev-Team:Compute and attach the policy to `\\Engineering\\` Compartment
- B. Allow group Eng-group to inspect instance-family in compartment Dev-Team: Compute and attach the policy to `\\SysTest Team\\` Compartment
- C. Allow group Eng-group to read instance-family in compartment Compute and attach the policy to `\\Engineering\\` Compartment.
- D. Allow group Eng-group to read instance-family in compartment Dev-Team-.Compute and attach the policy to `\\Dev-Team\\`

Correct Answer: A

Policy Attachment When you create a policy you must attach it to a compartment (or the tenancy, which is the root compartment). Where you attach it controls who can then modify it or delete it. If you attach it to the tenancy (in other words, if the policy is in the root compartment), then anyone with access to manage policies in the tenancy can then change or delete it. Typically that's the Administrators group or any similar group you create and give broad access to. Anyone with access only to a child compartment cannot modify or delete that policy. When you attach a policy to a compartment, you must be in that compartment and you must indicate directly in the statement which compartment it applies to. If you are not in the compartment, you'll get an error if you try to attach the policy to a different compartment. Notice that attachment occurs during policy creation, which means a policy can be attached to only one compartment. **Policies and Compartment Hierarchies** a policy statement must specify the compartment for which access is being granted (or the tenancy). Where you create the policy determines who can update the policy. If you attach the policy to the compartment or its parent, you can simply specify the compartment name. If you attach the policy further up the hierarchy, you must specify the path. The format of the path is each compartment name (or OCID) in the path, separated by a colon: `:: . . .` to allow action to compartment Compute so you need to set the compartment PATH as per where you attach the policy as below examples if you attach it to Root compartment you need to specify the PATH as following `Engineering:DevTeam:Compute` if you attach it to Engineering compartment you need to specify the PATH as

following Dev-Team:Compute if you attach it to Dev-Team or Compute compartment you need to specify the PATH as following Compute Note : in the Policy inspect verb that give the Ability to list resources, without access to any confidential information or user-specified metadata that may be part of that resource.

[Latest 1Z0-997-21 Dumps](#)

[1Z0-997-21 PDF Dumps](#)

[1Z0-997-21 Exam Questions](#)