

# 300-415<sup>Q&As</sup>

Implementing Cisco SD-WAN Solutions (ENSDWI)

## Pass Cisco 300-415 Exam with 100% Guarantee

Free Download Real Questions & Answers **PDF** and **VCE** file from:

<https://www.pass2lead.com/300-415.html>

100% Passing Guarantee  
100% Money Back Assurance

Following Questions and Answers are all new published by Cisco  
Official Exam Center

- ⚙️ **Instant Download** After Purchase
- ⚙️ **100% Money Back** Guarantee
- ⚙️ **365 Days** Free Update
- ⚙️ **800,000+** Satisfied Customers



**QUESTION 1**

A network administrator is configuring a centralized control policy based on match action pairs for multiple conditions. Which order must be configured to prefer Prefix List over TLOC and TLOC over Origin?

- A. highest to lowest sequence number
- B. nonsequential order
- C. deterministic order
- D. lowest to highest sequence number

Correct Answer: D

A centralized control policy consists of a series of numbered (ordered) sequences of match-action pairs that are evaluated in order, from lowest sequence number to highest sequence number. When a route or TLOC matches the match conditions, the associated action or actions are taken and policy evaluation on that packets stops. Keep this process in mind as you design your policies to ensure that the desired actions are taken on the items subject to policy.

If a route or TLOC matches no parameters in any of the sequences in the policy configure, it is, by default, rejected and discarded.

**QUESTION 2**

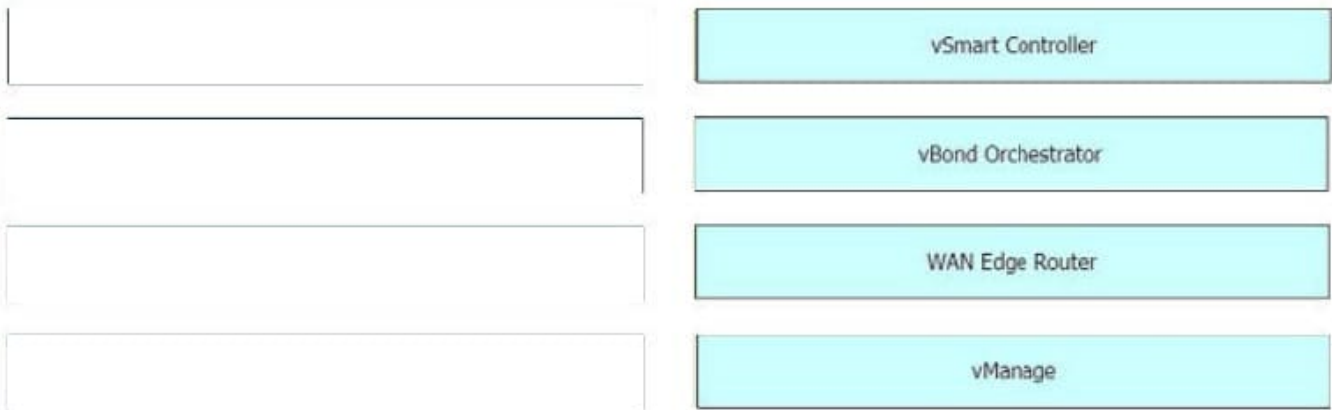
DRAG DROP

Drag and drop the Cisco SD-WAN components from the left onto their functions on the right.

Select and Place:

vBond Orchestrator	IPsec key reflection and rekeying
vManage	first point of authentication
vSmart Controller	passes data plane traffic
WAN Edge Router	used to build configuration and policies

Correct Answer:



### QUESTION 3

Which policy configuration must be used to classify traffic as it enters the branch WAN Edge router to be put into the desired output queue?

A. Policy

```
class-map
```

```
class p1 queue 2
```

B. Policy access-list QoS sequence 1 match

```
destination-ip 10.0.0.0/8
```

```
!
```

```
action accept
```

```
class p1
```

C. Policy

```
qos-scheduler QOS
```

```
class p1
```

```
bandwidth-percent 20
```

```
buffer-percent 20
```

```
drops red-drop
```

D. qos-map Q\_Map qos-scheduler p1

Correct Answer: A

Reference: <https://www.cisco.com/c/en/us/td/docs/routers/sdwan/configuration/qos/ios-xe-17/qos-book-xe/forwarding-qos.html>

#### QUESTION 4

An engineer is applying QoS policy for the transport-side tunnel interfaces to enable scheduling and shaping for a WAN Edge cloud router. Which command accomplishes the task?

- A. cloud-qos-service-side
- B. qos-scheduler QOS\_0
- C. rewrite-rule QOS-REQWRITE
- D. qos-map QOS

Correct Answer: A

---

#### QUESTION 5

How is multicast routing enabled on devices in the Cisco SD-WAN overlay network?

- A. The WAN Edge routers originate multicast service routes to the vSmart controller via OMP, which then forwards joins for requested multicast groups based on IGMP v2 or v3 toward the source or PIM-RP as specified in the original PIM join message.
- B. The WAN Edge routers originate multicast service routes to the vSmart controller via OMP, which then forwards joins for requested multicast groups based on IGMP v1 or v2 toward the source or PIM-RP as specified in the original PIM join message.
- C. The vSmart controller originates multicast service routes to the WAN Edge routers via OMP, which then forwards joins for requested multicast groups based on IGMP v1 or v2 toward the source or PIM-RP as specified in the original PIM join message.
- D. The vSmart controller originates multicast service routes to the WAN Edge routers via OMP, which then forwards joins for requested multicast groups based on IGMP v2 or v3 toward the source or PIM-RP as specified in the original PIM join message.

Correct Answer: A

Reference: <https://www.cisco.com/c/en/us/td/docs/routers/sdwan/configuration/routing/ios-xe-17/routing-book-xe/m-multicast-routing.html>

---

#### QUESTION 6

Which template configures the out-of band management VPN?

A.

Section	Parameter	Type	Variable/value
<b>Basic configuration</b>	Shutdown	Global	No
	Interface Name	Global	loopback0
<b>IPv4 configuration</b>	IPv4 Address	Radio button	Static
	IPv4 Address	Device Specific	vpn1_lo0_int_ip_addr/maskbits

B.

Section	Parameter	Type	Variable/value
<b>Basic configuration</b>	Shutdown	Global	No
	Interface Name	Device Specific	vpn512_mgt_int_mgmt0_or_gex/x
	Description	Global	Management Interface
<b>IPv4 configuration</b>	IPv4 Address	Radio button	Static
	IPv4 Address	Device Specific	vpn512_mgt_int_ip_addr/maskbits

C.

Section	Parameter	Type	Variable/value
<b>Basic configuration</b>	VPN	Global	512
	Name	Global	Management VPN
<b>IPv4 Route</b>	Prefix	Global	0.0.0.0/0
	Gateway	Radio button	Next Hop
	Next Hop	Device Specific	vpn512_mgt_next_hop_ip_addr

D.

Section	Parameter	Type	Variable/value
<b>Basic configuration</b>	Shutdown	Device Specific	vpn1_lan_int2_shutdown
	Interface Name	Device Specific	vpn1_lan_int2_gex/x
<b>IPv4 configuration</b>	Description	Device Specific	vpn1_lan_int2_description
	IPv4 Address	Radio button	Static
	IPv4 Address	Device Specific	vpn1_lan_int2_ip_addr/maskbits

A. Option A

B. Option B

C. Option C

D. Option D

Correct Answer: C

---

#### QUESTION 7

Which configuration step is taken on vManage after WAN Edge list is uploaded to support the on-boarding process before the device comes online?

A. Verify the device certificate

B. Enable the ZTP process

C. Set the device as valid

D. Send the list to controllers

Correct Answer: C

Reference: <https://www.cisco.com/c/dam/en/us/td/docs/solutions/CVD/SDWAN/sd-wan-wan-edge-onboarding-deploy-guide-2020jan.pdf>

---

#### QUESTION 8

Which platform cannot provide IPS and URL filtering capabilities?

A. Cisco CSR 1000V

B. Cisco ISR 1000

C. Cisco ISR 4000

D. Cisco Catalyst 8300

Correct Answer: AD

---

#### QUESTION 9

Which protocol detects path status (up/down), measures loss/latency/jitter, and measures the quality of the IPsec tunnel MTU?

A. DTLS

B. BFD

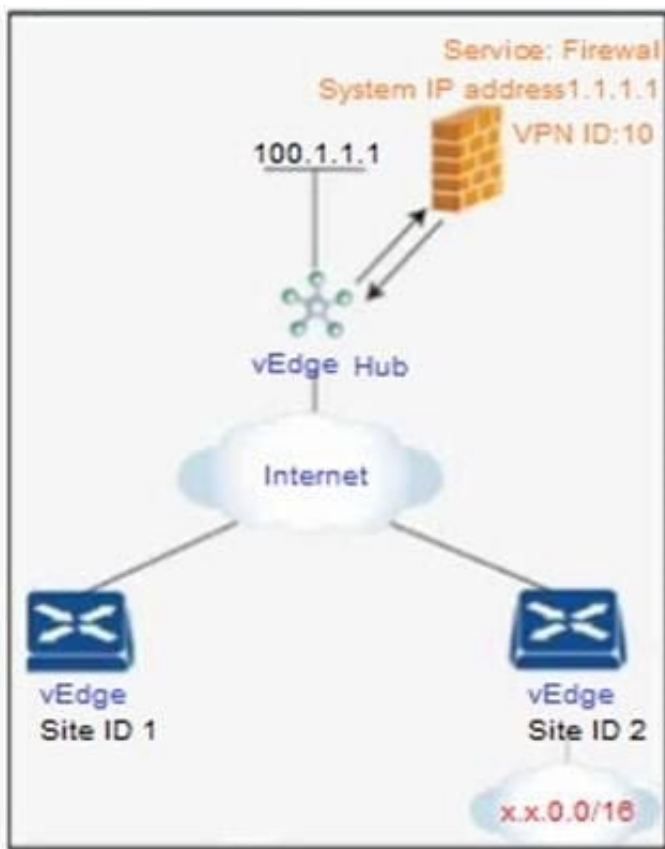
C. OMP

D. IP-SLA

Correct Answer: B

**QUESTION 10**

Refer to the exhibit.



An engineer is configuring service chaining. Which set of configurations is required for all traffic from Site ID 1 going toward Site ID 2 to get filtered through the firewall on the hub site?

A.

```
vpn 10
  service FW address 1.1.1.1
policy
  lists
    site-list firewall-service
    site-id 1
control-policy firewall-service
  sequence 10
  match route
  site-id 2
  action accept
  site service FW vpn 20
  default-action accept
apply-policy
  site-list firewall-sites control-policy firewall-service out
```

B.

```
vpn 10
  service FW address 1.1.1.1
policy
  lists
    site-list firewall-sites
    site-id 1
control-policy firewall-service
  sequence 10
  match route
  site-id 2
  action accept
  site service FW vpn 10
  default-action accept
apply-policy
  site-list firewall-sites control-policy firewall-service out
```



C.

```
vpn 20
  service FW address 1.1.1.1
policy
  lists
    site-list firewall-sites
    site-id 1
control-policy firewall-service
  sequence 10
  match route
  site-id 2
  action accept
  site service FW vpn 20
  default-action accept
apply-policy
  site-list firewall-sites control-policy firewall-service out
```

D.

```
vpn 10
  service FW address 1.1.1.2
policy
  lists
    site-list firewall-sites
    site-id 1
control-policy firewall-service
  sequence 10
  match route
  site-id 2
  action accept
  site service FW vpn 10
  default-action accept
apply-policy
  site-list firewall-sites control-policy firewall-service out
```

A. Option A

B. Option B

C. Option C

D. Option D

Correct Answer: B

[https://sdwandocs.cisco.com/Product\\_Documentation/Software\\_Features/SDWAN\\_Release\\_16.3/07Policy\\_Applications/02Service\\_Chaining/Service\\_Chaining\\_Configuration\\_Examples](https://sdwandocs.cisco.com/Product_Documentation/Software_Features/SDWAN_Release_16.3/07Policy_Applications/02Service_Chaining/Service_Chaining_Configuration_Examples)

**QUESTION 11**

Which plane assists in the automatic onboarding of the SD-WAN routers into the SD-WAN overlay?

- A. Data
- B. Orchestration
- C. Management
- D. Control

Correct Answer: B

**QUESTION 12**

DRAG DROP

Drag and drop the REST API calls from the left onto the functions on the right.

Select and Place:

PUT	Retrieve of read
GET	Update an object
POST	Create an object
DELETE	Remove an object

Correct Answer:

GET

PUT

POST

DELETE

**QUESTION 13**

A large retail organization decided to move some of the branch applications to the AWS cloud. How does the network architect extend the in-house Cisco SD-WAN branch to cloud network into AWS?

- A. Create virtual WAN Edge devices Cloud through the AWS online software store
- B. Create virtual instances of vSmart Cloud through the AWS online software store
- C. Create GRE tunnels to AWS from each branch over the Internet
- D. Install the AWS Cloud Router in the main data center and provide the connectivity from each branch

Correct Answer: A

[https://www.cisco.com/c/en/us/td/docs/solutions/CVD/SDWAN/Cisco\\_Cloud\\_onRamp\\_for\\_IaaS\\_AWS\\_Version2.html#\\_Toc54023359](https://www.cisco.com/c/en/us/td/docs/solutions/CVD/SDWAN/Cisco_Cloud_onRamp_for_IaaS_AWS_Version2.html#_Toc54023359)

**QUESTION 14**

Which two performance data details are provided by Cisco SD-WAN vAnalytics? (Choose two.)

- A. certificate authority status (health and expiration dates) for all controllers
- B. application quality of experience score from zero to ten
- C. details on total cost of ownership for the fabric
- D. jitter, loss, and latency for data tunnels
- E. view devices connected to a vManage NMS

Correct Answer: BD

**QUESTION 15**

Refer to the exhibit. An engineer is troubleshooting a control connection issue. What does "connect" mean in this show control connections output?

PEER TYPE	PEER PROTOCOL	PEER SYSTEM	SITE IP	DOMAIN ID	PEER PRIVATE IP	PEER PRIVATE PORT	PEER PUBLIC IP	PEER PUBLIC PORT	CONTROLLER		GROUP STATE
									LOCAL	COLOR	
vbond	dtls	-	0	0	1.3.25.25	12346	1.3.25.25	12346	gold	connect	0
vbond	dtls	-	0	0	1.3.25.25	12346	1.3.25.25	12346	silver	connect	0

- A. Control connection is down
- B. Control connection is up
- C. Control connection attempt is in progress
- D. Control connection is connected

Correct Answer: C

Reference: <https://community.cisco.com/t5/networking-documents/sd-wan-routers-troubleshoot-control-connections/ta-p/3813237>

[Latest 300-415 Dumps](#)

[300-415 PDF Dumps](#)

[300-415 VCE Dumps](#)