

3101^{Q&As}

Avaya Aura® Communication Manager and CM Messaging -
Embedded Maintenance and Troubleshooting Exam

Pass Avaya 3101 Exam with 100% Guarantee

Free Download Real Questions & Answers **PDF** and **VCE** file from:

<https://www.pass2lead.com/3101.html>

100% Passing Guarantee
100% Money Back Assurance

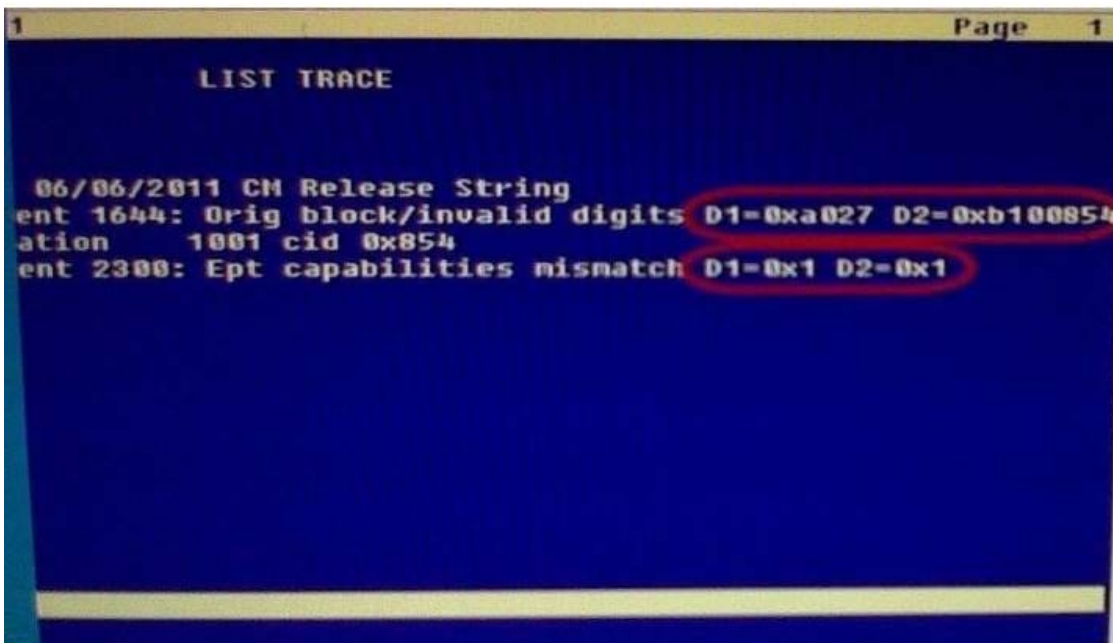
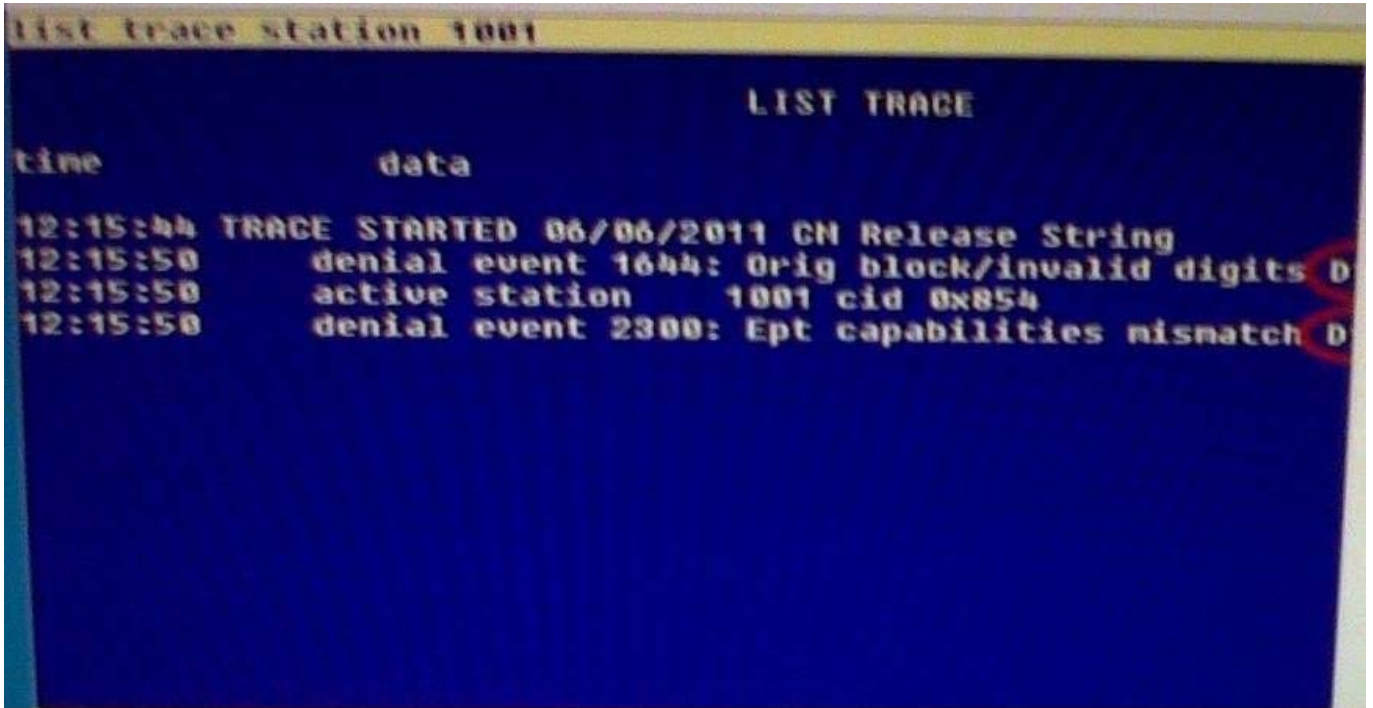
Following Questions and Answers are all new published by Avaya
Official Exam Center

- ⚙️ **Instant Download** After Purchase
- ⚙️ **100% Money Back** Guarantee
- ⚙️ **365 Days** Free Update
- ⚙️ **800,000+** Satisfied Customers



QUESTION 1

Exhibit displays a list trace report on a station.



What are the D1 and D2 values for the denial events in the list trace report?

- A. Hexadecimal destination codes that are listed in the Denial Event documentation
- B. Hexadecimal data that must be converted to binary then interpreted in the Denial events document

- C. Binary destination codes that are listed in the Denial Events documentation
- D. Binary data listed in the Communication Manager Denial Events

Correct Answer: B

QUESTION 2

You need to perform an encrypted backup of all the data types from Monday through Friday. You want to ensure that a recurring backup is done using FTP and it begins at 9:30 AM.

From the Administration/ Server (Maintenance) menu, which option should you choose?

- A. Backup Now > Select Full Backup radio button > ftp Method > Select Encryption > Start Backup
- B. Backup Now > Select specify data sets and checkbox Messaging > ftp Method > Days of week = Monday through Friday > Start Time = 9:30 > Add New Schedule
- C. Schedule Backup > Add > Select Specify Data sets and checkbox Messaging > ftp Method > Select Encryption > Days of Week = Monday through Friday > start time = 9:30 > Add new schedule
- D. Schedule Backup > Add > Select Specify Data Sets > ftp method > Days of Week = Monday through Friday > Start Time = 9:30 > Add new schedule

Correct Answer: C

Reference 276 Maintenance Procedures for Communication Manager, Media Gateways and Servers

QUESTION 3

With the trend toward convergence, more customers have been connecting their port networks at remote locations across a WAN connection from Communication Manager.

Which timing consideration typically affects these remote port networks?

- A. CLAN timers can be administrator from 3-15 seconds.
- B. IPSI timers can be administrator from 3-15 seconds
- C. the CM primary Search Timer can be administrator from 15-3600 seconds
- D. H.248 Link Bounce Timer can be administered from 1-30 seconds.
- E. H.323 Link Bounce Timer can be administered from 1-60 seconds

Correct Answer: B

QUESTION 4

Telephone bills indicate an unusual level of usage of outbound traffic on the inbound-only trunk. Which command would you use to validate that calls are not being made on the inbound trunk group only?

- A. list trace tac
- B. List measurement route-pattern
- C. List measurements trunk-group
- D. List measurements call-rate

Correct Answer: C

Page 164 Avaya Aura™ Communication Manager Reports

QUESTION 5

When making a call outside of the system, a user periodically gets an audio message, "cannot complete call as dialed." Which commands helps diagnose this problem?

- A. busyout/release trunk
- B. status trunk- group
- C. list trace station
- D. list trace tac

Correct Answer: C

QUESTION 6

A subscriber is locked out of messaging system after three unsuccessful login attempts. The administrator needs to unlock the subscriber's mailbox.

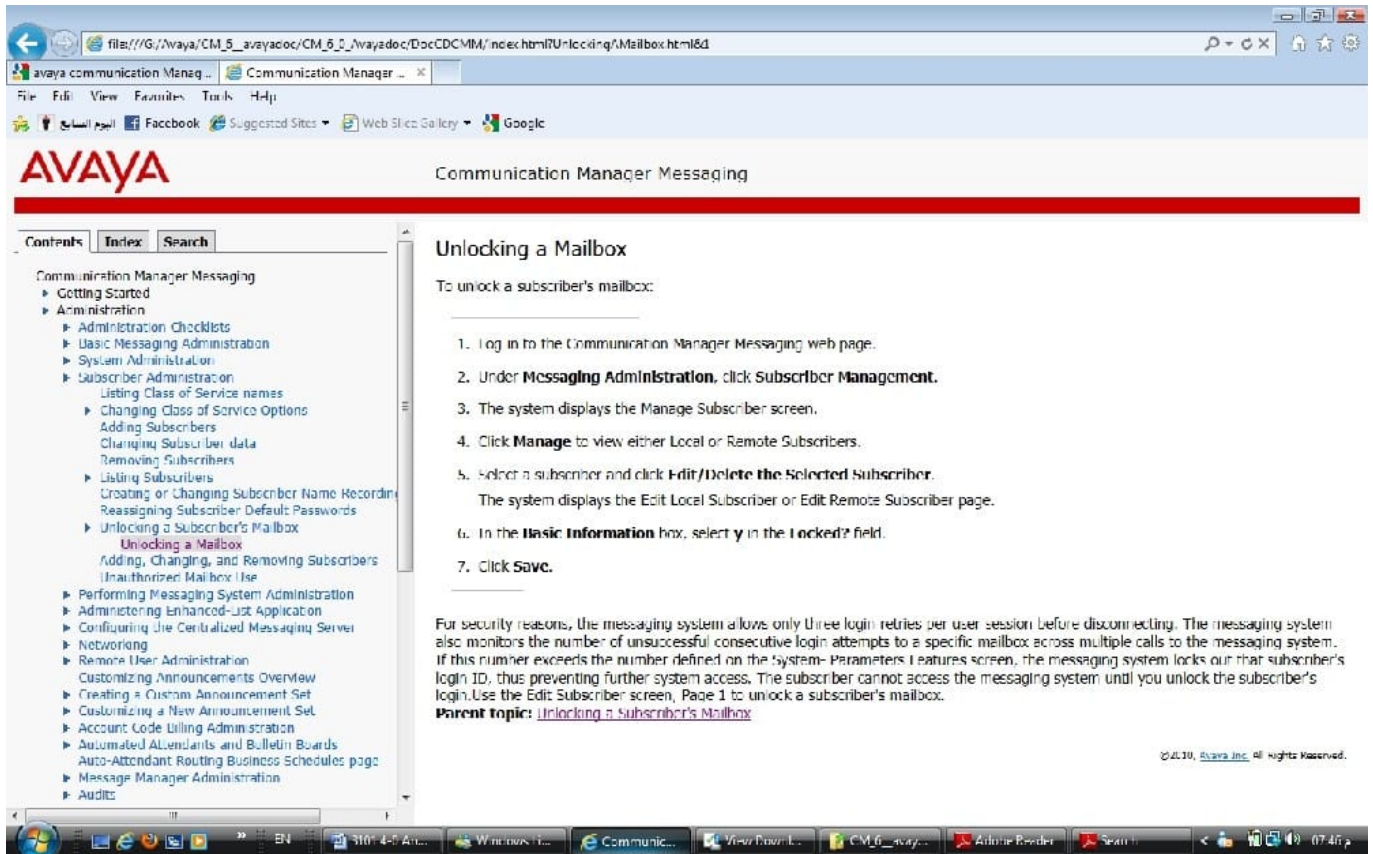
Which basic parameter from the Messaging/Administration> Subscriber management > Manager > Manage > menu should the administration edit to unlock the subscriber's mailbox?

- A. Basic Information> Locked? =yes
- B. Basic Information> Locked? = no
- C. Basic Information > password
- D. Custom COS Permissions> Trusted Server Access = Yes
- E. Custom COS Permissions> trusted Server Access = no

Correct Answer: A

Explanation:

Reference in screenshot



QUESTION 7

The Communication manager trunk group that carries calls to Communication Manager Messaging in H.323 integration should have which option in the Group Type field?

- A. H.323
- B. ISDN
- C. SIP
- D. Q.931

Correct Answer: B

QUESTION 8

In addition to consulting Avaya Aura® Communication Manager Server Alarms (03-602798) for interpreting the Server Alarms section of the Current Alarms Page as shown in the exhibit, what other information source helps interpret these alarms?



- A. Status Summary page (SMI)
- B. SAT: display alarms command
- C. Server manufacture's maintenance documentation
- D. SAT: display events command

Correct Answer: B

QUESTION 9

Which administrable Quality of Service (QoS) parameter can minimize packet delay, and thus improve voice quality?

- A. NAT
- B. DiffServ
- C. TTY

D. SIP

Correct Answer: B

QUESTION 10

A technician is initially dispatched to diagnose a system issue. A DSI connection is receiving slips and timing errors. What steps should the technician take to diagnose the problem?

- A. Make a call, check voice quality, and reboot server
- B. Make a DS1 test call, test DS1 boards, validate administration, and contact the service provider if necessary
- C. Test the telephones, move telephone to different circuit, and replace the telephone
- D. Test DS1 boards, move the board to different slot, and replace boards

Correct Answer: B

QUESTION 11

Occasionally, a user in network region 1 lifts the handset to call a user in network region 2, and although the active red and green lights are operable, there is no dial tone. Which two possible causes should you investigate? (Choose two.)

- A. IP Softphone not enabled on the station form
- B. H.323 and SIP endpoints are incompatible when used together
- C. DSP resources out of service
- D. Network Region incompatibly administered
- E. Station does not have a voice mailbox assigned

Correct Answer: CD

QUESTION 12

Which SAT command lists the status of LSPs and ESSs?

- A. List survivable-processor
- B. display system-parameters duplication
- C. List configuration stations
- D. status station

Correct Answer: A

QUESTION 13

How would you configure auto attendant so that mailbox number is announced first when a call connects directly into mailbox or extension?

- A. Blank
- B. Call-answer
- C. Guest-greeting
- D. Transfer
- E. Auto-attendant

Correct Answer: B

QUESTION 14

Avaya Aura System Platform (SP) is necessary for all Communication Manager (CM) Release 6.0 and higher. What procedures do you use to update system platform supporting duplex services without interrupting service?

- A. Update SP only on the active side, force a server interchange and update SP on the other side.
- B. Update standby SP, set standby CM as active, update other SP and set other CM as standby
- C. Update SP only on the active side; the standby side is synchronized automatically.
- D. Update both the active and standby SP at the same time.

Correct Answer: B

QUESTION 15

Which audit checks and deletes new, old, and unopened messages that exceed maximum retention time?

- A. Names Audit
- B. Mailing List Audit
- C. Mailbox Audit
- D. Personal Directories Audit

Correct Answer: C

Reference http://support.avaya.com/elmodocs2/intuity/audix/LXR1/lx_r1_issue2/maudits.htm

[Latest 3101 Dumps](#)

[3101 PDF Dumps](#)

[3101 Study Guide](#)