

400-007^{Q&As}

Cisco Certified Design Expert (CCDE Written)

Pass Cisco 400-007 Exam with 100% Guarantee

Free Download Real Questions & Answers **PDF** and **VCE** file from:

<https://www.pass2lead.com/400-007.html>

100% Passing Guarantee
100% Money Back Assurance

Following Questions and Answers are all new published by Cisco
Official Exam Center

-  **Instant Download** After Purchase
-  **100% Money Back** Guarantee
-  **365 Days** Free Update
-  **800,000+** Satisfied Customers



QUESTION 1

You are designing an Out of Band Cisco Network Admission Control. Layer 3 Real-IP Gateway deployment for a customer.

Which VLAN must be trunked back to the Clean Access Server from the access switch?

- A. authentication VLAN
- B. user VLAN
- C. untrusted VLAN
- D. management VLAN

Correct Answer: D

QUESTION 2

Which purpose of a dynamically created tunnel interface on the design of IPv6 multicast services is true?

- A. first-hop router registration to the RP
- B. multicast client registration to the RP
- C. multicast source registration to the RP
- D. transport of all IPv6 multicast traffic

Correct Answer: D

The purpose of a dynamically created tunnel interface in the design of IPv6 multicast services is to transport all IPv6 multicast traffic. A tunnel interface is a virtual interface that is used to encapsulate IPv6 multicast traffic in an IPv4 or another IPv6 unicast packet for transport across a network. In the context of IPv6 multicast services, the tunnel interface is dynamically created when multicast traffic needs to be transported between multicast domains, or when the network topology requires it. The tunnel interface is used to encapsulate the IPv6 multicast traffic, allowing it to traverse the network as a unicast packet, which is then decapsulated and forwarded to the appropriate receivers.

QUESTION 3

A healthcare customer requested that SNMP traps must be sent over the MPLS Layer 3 VPN service. Which protocol must be enabled?

- A. SNMPv3
- B. Syslog
- C. Syslog TLS
- D. SNMPv2

E. SSH

Correct Answer: A

QUESTION 4

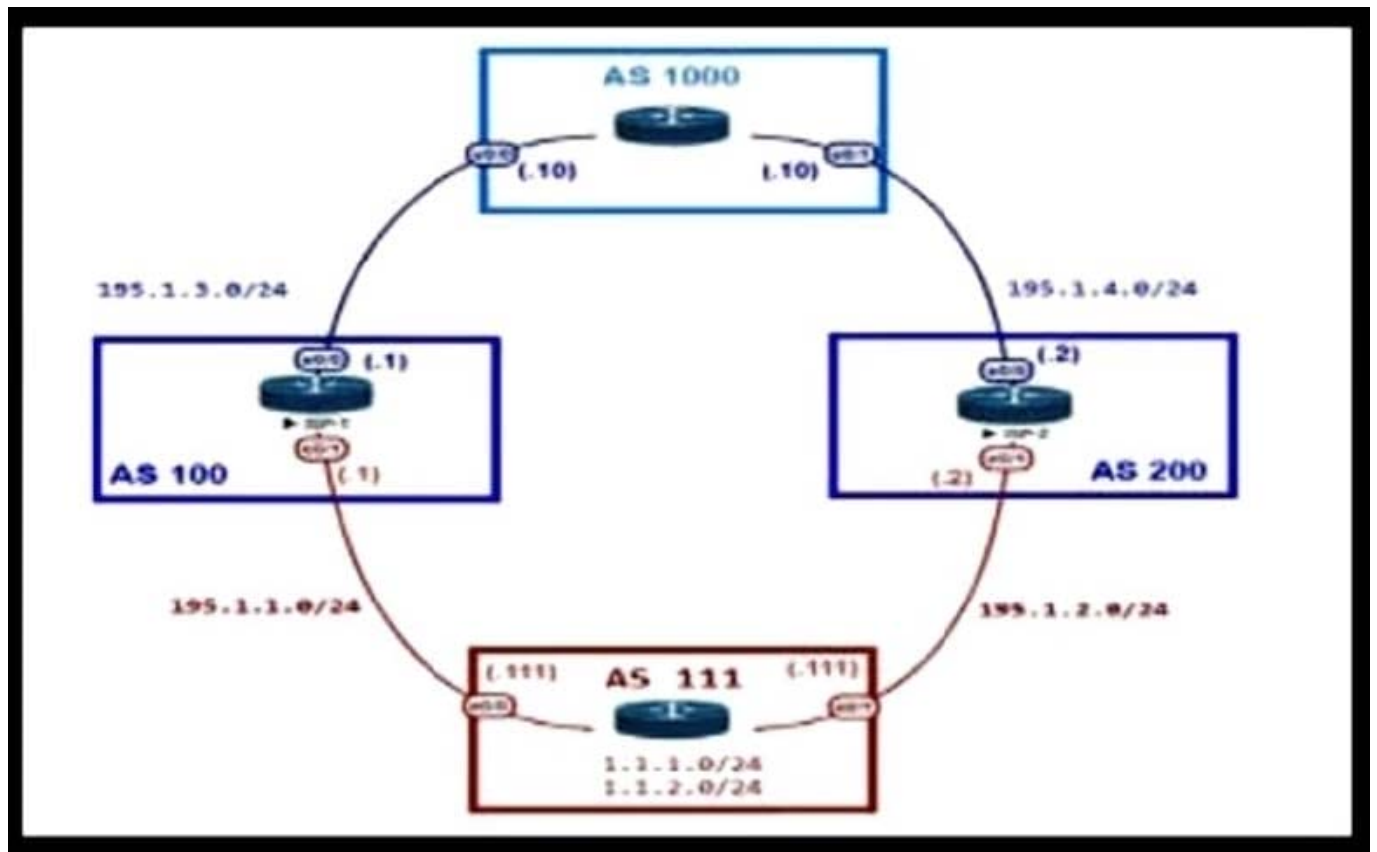
In the case of outsourced IT services, the RTO is defined within the SLA. Which two support terms are often included in the SLA by IT and other service providers? (Choose two.)

- A. network size and cost
- B. support availability
- C. network sustainability
- D. network reliability
- E. resolution time

Correct Answer: BE

QUESTION 5

Refer to the exhibit.



An engineer is designing the network for a multihomed customer running in AS 111 does not have any other Ass connected to it. Which technology is more comprehensive to use in the design to make sure that the AS is not being used as a transit AS?

- A. Configure the AS-set attribute to allow only routes from AS 111 to be propagated to the neighbor ASs.
- B. Use the local preference attribute to configure your AS as a non-transit AS.
- C. include an AS path access list to send routes to the neighboring ASs that only have AS 111 in the AS path field.
- D. Include a prefix list to only receive routes from neighboring ASs.

Correct Answer: C

QUESTION 6

Router R1 is a BGP speaker with one peering neighbor over link "A". When the R1 link/interface "A" fails, routing announcements are terminated, which results in the tearing down of the state for all BGP routes at each end of the link. What is this a good example of?

- A. fault isolation
- B. resiliency
- C. redundancy
- D. fate sharing

Correct Answer: D

QUESTION 7

A service provider recently migrated to an SD-WAN solution for delivering WAN connections to its customers. One of the main challenges with the SD-WAN deployment is that branch site volume increases every year, which causes management complexity.

Which action resolves the issue?

- A. Implement a scalable network management system to manage all sites.
- B. Adopt a well-structured SD-WAN service management lifecycle model
- C. Build a service orchestration platform on top of the network controller
- D. Set up a dedicated team to monitor and provision new customers

Correct Answer: C

QUESTION 8

Which tool automates network implementation activities and shortens the implementation lifecycle?

- A. LISP
- B. Java
- C. Conclusion
- D. Python

Correct Answer: D

QUESTION 9

Which DCI technology utilizes a "flood and learn" technique to populate the Layer2 forwarding table?

- A. LISP
- B. OTV
- C. VPLS
- D. EVPN

Correct Answer: C

QUESTION 10

Company XYZ Is running a redundant private WAN network using OSPF as the underlay protocol The current design accommodates for redundancy In the network, but it Is taking over 30 seconds for the network to reconverge upon failure.

Which technique can be Implemented In the design to detect such a failure in a subsecond?

- A. STP
- B. fate sharing
- C. OSPF LFA
- D. BFD
- E. flex links

Correct Answer: D

QUESTION 11

A senior network designer suggests that you should improve network convergence times by reducing BGP timers between your CE router and the PE router of the service provider. Which two factors should you consider to adjust the timer values? (Choose two.)

- A. service provider agreement to support tuned timers
- B. manual updates to the peer groups
- C. service provider scheduling of changes to the PE
- D. number of routes on the CE router
- E. number of VRFs on the PE router

Correct Answer: AD

QUESTION 12

Which undesired effect of increasing the jitter compensation buffer is true?

- A. The overall transport jitter decreases and quality improves.
- B. The overall transport jitter increases and quality issues can occur.
- C. The overall transport delay increases and quality issues can occur.
- D. The overall transport delay decreases and quality improves.

Correct Answer: C

QUESTION 13

A customer migrates from a traditional Layer 2 data center network into a new SDN-based, spine-and-leaf VXLAN EVPN data center within the same location. The networks are joined to enable host migration at Layer 2. Which activity should be completed each time a legacy network is migrated?

- A. The migrated VLAN should be pruned from the Layer 2 interconnects.
- B. The migrated network should have a VXLAN VNID configured within the new network.
- C. The migrated network should be advertised to the EVPN network as a Type 2 network.
- D. The migrated network should be added to the EVPN BGP routing.

Correct Answer: B

his VNID provides a unique identifier for the network within the VXLAN overlay, which allows the network to be identified and properly routed within the new network. This is a key step in enabling host migration at Layer 2.

QUESTION 14

Which feature must be part of the network design to wait a predetermined amount of time before notifying the routing protocol of a change in the path in the network?

- A. Transmit delay

- B. Throttle timer
- C. SPF hold time
- D. Interface dampening

Correct Answer: B

QUESTION 15

What is a characteristic of a secure cloud architecture model?

- A. limited access to job function
- B. dedicated and restricted workstations
- C. multi-factor authentication
- D. software-defined network segmentation

Correct Answer: D

[400-007 PDF Dumps](#)

[400-007 VCE Dumps](#)

[400-007 Study Guide](#)