

4A0-100^{Q&As}

Alcatel-Lucent Scalable IP Networks

Pass Alcatel-Lucent 4A0-100 Exam with 100% Guarantee

Free Download Real Questions & Answers **PDF** and **VCE** file from:

<https://www.pass2lead.com/4a0-100.html>

100% Passing Guarantee
100% Money Back Assurance

Following Questions and Answers are all new published by Alcatel-Lucent Official Exam Center

- ⚙️ **Instant Download** After Purchase
- ⚙️ **100% Money Back** Guarantee
- ⚙️ **365 Days** Free Update
- ⚙️ **800,000+** Satisfied Customers



QUESTION 1

What characteristic of IP addressing creates a hierarchical network?

- A. All hosts on all networks must have unique host numbers.
- B. IP addresses identify a host and the network on which it resides.
- C. Clients are assigned 32-bit addresses and servers 64-bit addresses.
- D. Router, switch and host addresses are drawn from unique address classes.

Correct Answer: B

QUESTION 2

A network with address 208.40.224.0/24 is divided into /28 subnets. What is the host address range of the fourth subnetwork?

- A. 208.40.224.17 ?208.40.224.30
- B. 208.40.224.33 ?208.40.224.46
- C. 208.40.224.49 ?208.40.224.62
- D. 208.40.224.65 ?208.40.224.78

Correct Answer: C

QUESTION 3

Which of the following statements regarding TCP is TRUE?

- A. Sequence numbers are used to ensure that the data received is offered to the application in the correct order.
- B. The SYN flag is used to identify congestion in the network.
- C. The NACK flag is set on confirmation segments to acknowledge FCS errors.
- D. The window size is transmitted in all TCP segments to communicate MTU limitations of lower layer protocols to upper layer applications.

Correct Answer: A

QUESTION 4

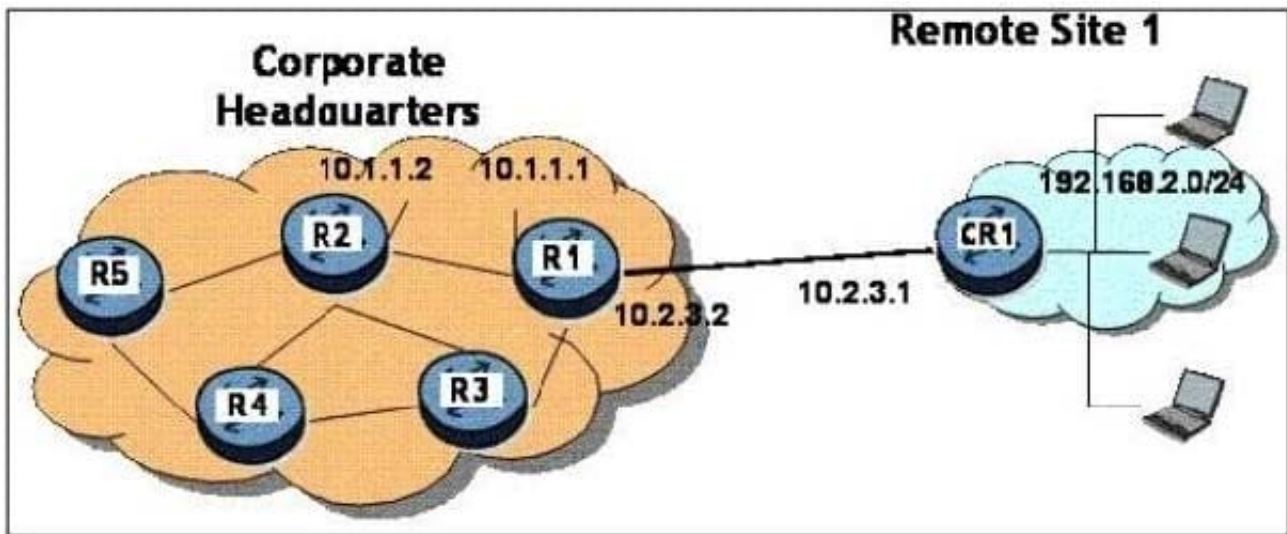
Which of the following statements is TRUE regarding a VPWS service?

- A. VPWS is a point-to-multipoint service.

- B. VPWS requires MAC learning in order to forward frames to the correct destination
- C. A Spanning Tree Protocol must be enabled when deploying a VPWS.
- D. VPWS treats multicast traffic similar to unicast traffic.

Correct Answer: D

QUESTION 5



Based on the network diagram (click the Exhibit Button), what are the prefix, mask, and next-hop used on CR1 to setup a default static route to R1?

- A. 0.0.0.0/0 next-hop 10.2.3.2
- B. 0.0.0.0/32 next-hop 10.2.3.2
- C. 10.2.3.2/32 next-hop 0.0.0.0/0
- D. 0.0.0.0/0 next-hop 192.168.2.0

Correct Answer: A

QUESTION 6

What is the basic unit of framing in SONET and the bit rate for its transmission?

- A. STS-1 with a bit rate of 1.544 Mbit/s
- B. STS-1 with a bit rate of 2.048 Mbit/s
- C. STS-1 with a bit rate of 51.84 Mbit/s
- D. STS-1 with a bit rate of 155.52 Mbit/s

Correct Answer: C

QUESTION 7

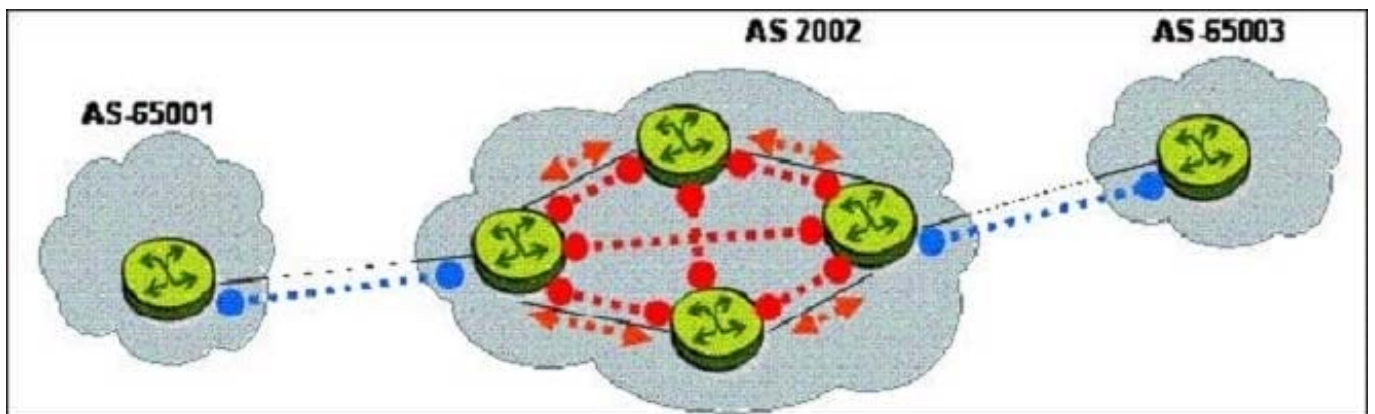
Which of the following statements is TRUE of Layer 3 addressing?

- A. Internet devices on the same network can have the same Layer 3 address in different broadcast domains.
- B. Every Host device must have a unique Layer 3 address in order to access the Internet.
- C. Internet devices need unique Layer 3 addresses to communicate directly with upper layers.
- D. A router must have only one address to allow it to be uniquely identified.

Correct Answer: B

QUESTION 8

In the diagram, what type of BGP session is established between the routers of AS 65001 and AS 2002?



- A. IGP
- B. IBGP
- C. EBGP
- D. EGP
- E. BGP cannot be run between routers in different ASs.

Correct Answer: C

QUESTION 9

Which type of IP address contains the network number and all 1s for the host address?

- A. Unicast address.

- B. Broadcast address.
- C. Multicast address.
- D. Anycast address.

Correct Answer: B

QUESTION 10

Which of the following is IANA responsible for?

- A. The allocation of enterprise IP address space
- B. The allocation of residential IP address space
- C. The allocation of global IP address space
- D. The allocation of North American IP address space

Correct Answer: D

QUESTION 11

What is the main purpose of IP fragmentation?

- A. To limit the number of the IP addresses in the network.
- B. To improve the efficiency of transmissions over the network.
- C. To reduce the number of resources required to send a large frame over the network.
- D. To allow IP datagrams to be carried over Layer 2 networks with varying MTU sizes.

Correct Answer: D

QUESTION 12

Which of the following is a characteristic of Link State protocols?

- A. Routers send a copy of their entire routing table to their neighbors.
- B. Routers send frequent periodic updates to the entire network.
- C. Routers know the entire network topology.
- D. Routers use hop-count to calculate their routing tables.

Correct Answer: C

QUESTION 13

How do ATM and Frame-Relay protocols differentiate multiple customers or traffic types on the same physical wire?

- A. They use virtual circuits to create a logical separation of traffic.
- B. They use subnetting to create a logical separation of traffic.
- C. They use VLANs to create a logical separation of traffic.
- D. They use IP header information to create a logical separation of traffic.

Correct Answer: A

QUESTION 14

What ICMP message type will a router use to indicate to a host that an IP datagram sourced from that host cannot be delivered?

- A. Echo Request.
- B. Destination Unreachable.
- C. Router redirect.
- D. Echo Reply.

Correct Answer: B

QUESTION 15

Choose two true statements that characterize Distance Vector Routing?

- A. Routers send a copy of their routing table to their neighbors periodically.
- B. Routers flood link information throughout the entire area.
- C. Network converges quickly (within several seconds) after a topology change.
- D. Routers do not have precise knowledge of the entire network topology.

Correct Answer: AD

[4A0-100 VCE Dumps](#)

[4A0-100 Study Guide](#)

[4A0-100 Exam Questions](#)